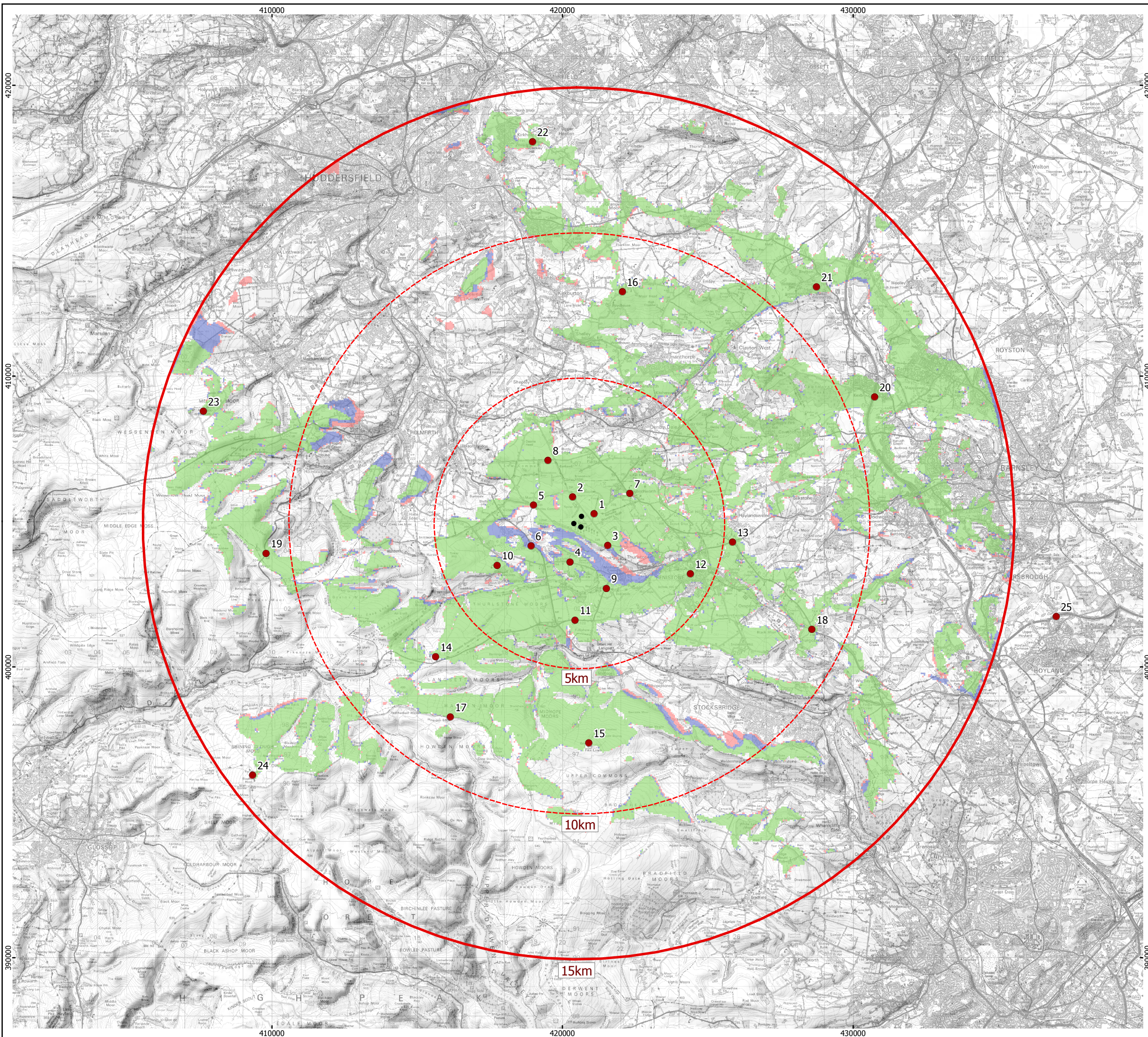


Reproduced from Ordnance Survey digital map data © Crown copyright 2009. All rights reserved. License number 100048606



J G PEARS LTD



Key

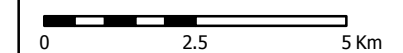
- Proposed Turbine Location
- Viewpoint

Zone of Theoretical Visibility

- 1 Turbine Visible
- 2 Turbines Visible
- 3 Turbines Visible

The Turbine Hub Height for the Proposed Turbine will be 60 m AGL.

1:125,000 Scale @ A3



Produced By: SC
Approved By: CS

Ref: 190/ES/022

Revision: A

Date: 24/02/2009

Hub Height ZTV Figure 5.2

Spicer Hill Wind Farm Environmental Statement