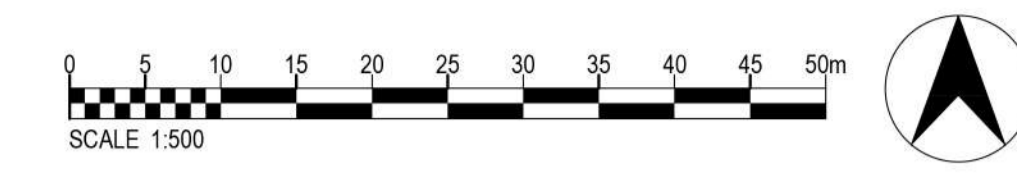




\*For the purposes of Planning Consent the following applies to any copy of this drawing made by the Local Authority.

This copy has been made by and with the authority of the person required to make the plan and drawing open to public inspection pursuant to Section 47 of the Copyright, Designs and Patents Act 1988. Unless that Act provides a relevant exception to copyright, the copy must not be copied without the prior permission of the copyright owner. If any copy is made under the authority only the whole drawing including the copyright holder's name and this notice, is to be copied.\*



East of Wakefield Rd Mapplewell									
House type	Beds	STOREYS	NO	SQ FT	TOTAL SQ FT	S106	FH	AFF	OAS
F50/70a GF ADM(3)	1	2	3	650	1950	3			
F50/70b FF	1	2	3	767	2301	3			
Atkins	2	2	6	763	4578			6	
Cherry	2	2	14	857	11998	2	2	10	
Holly	2	2	6	850	5100				6
Hampton (CT)	3	2	1	872	872				1
Apple	3	2	6	1,007	6042	2	2	2	
Cypress	3	2	8	1,107	8856				8
Becket (CT)	3	2	16	1,024	16384				8
Allington	3	2	10	1,001	10010			2	8
Beech	3	2.5	12	1,124	13488			6	6
Chestnut	4	2	4	1398	5592				4
Granger	4	2	2	1328	2656				2
<b>Total</b>			<b>91</b>		<b>89827</b>	<b>10</b>	<b>4</b>	<b>35</b>	<b>42</b>

P03 22.05.26 Drawings updated to suit pump station reverting back to previous location. ELC CL  
 P02 13.05.26 Coloured plan updated to suit revised layout. ELC CL  
 P01 05.05.26 Initial issue. ELC CL

Rev: Date: Description: By: Auth:

**P+HS** architects  
 a. 71 Grey Street  
 Newcastle upon Tyne  
 NE1 6EF  
 e. enquiries@pandhs.co.uk  
 t. 0191 825 0082  
 w. www.pandhs.co.uk

Client:  
 Vistry West Yorkshire

Project No: 4276  
 Project Name: Feasibility Layout Mapplewell Phase 2

Project	Originator	Functional	Spatial	Form	Discipline	Number
VWYM2	PHS	XX	XX	DR	A	07001

Coloured Feasibility Layout

Status Code	Description	Revision Code
S2	INFORMATION	P03

Created By: ELC  
 Authorised By: CL  
 Date of first issue: 05.05.26  
 Scale at A1: 1:500

This document is © P+HS Architects. If in doubt ASK. Drawing measurements shall not be obtained by scaling. Verify all dimensions prior to construction or product manufacture. Immediately report any discrepancies on this document to the Architect. This document shall be read in conjunction with associated models, specifications and related consultants documents.