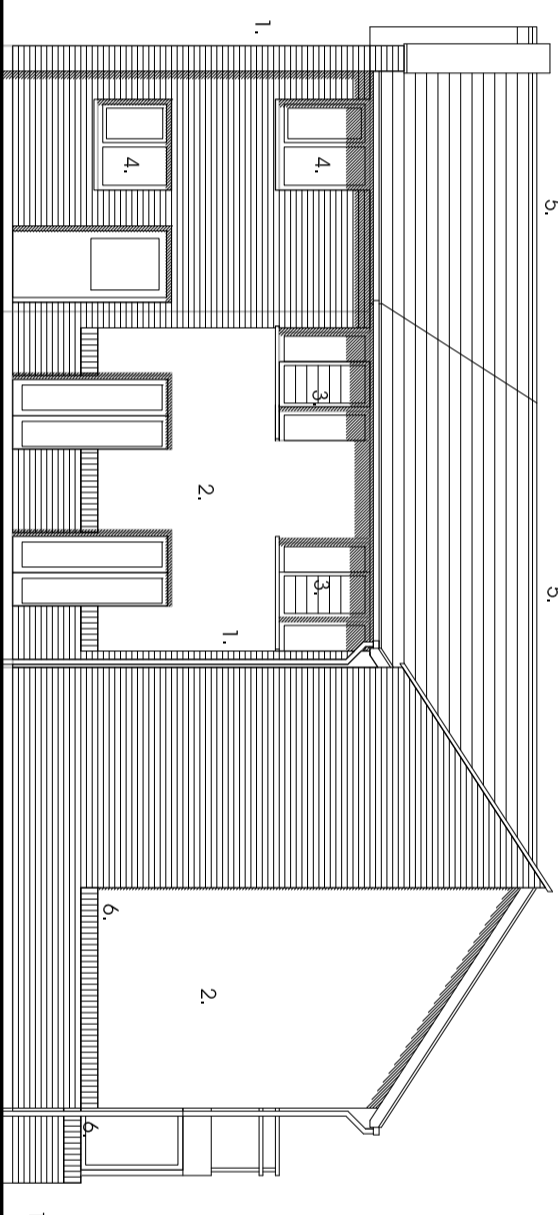
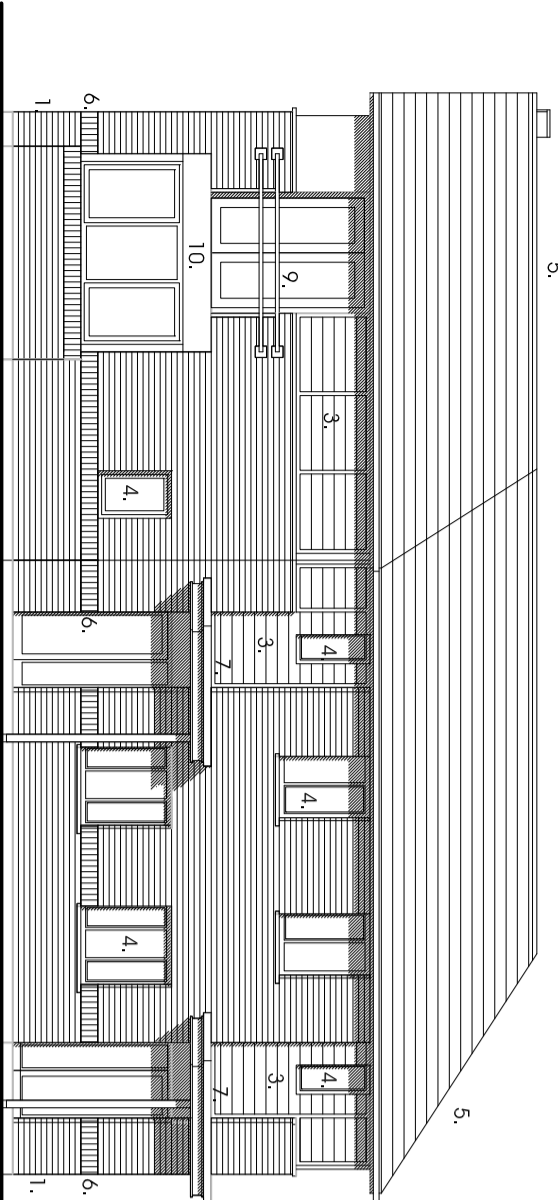
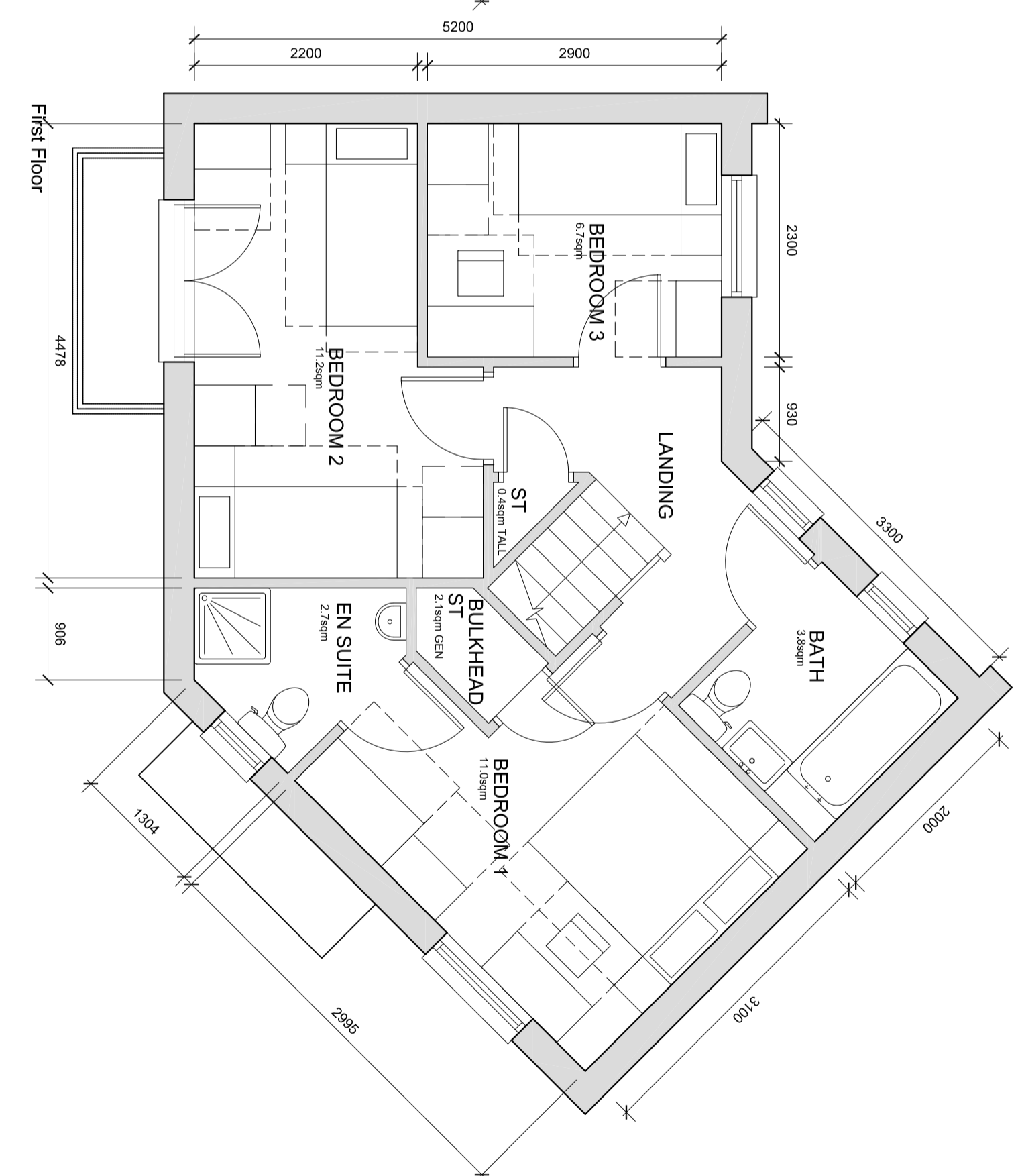
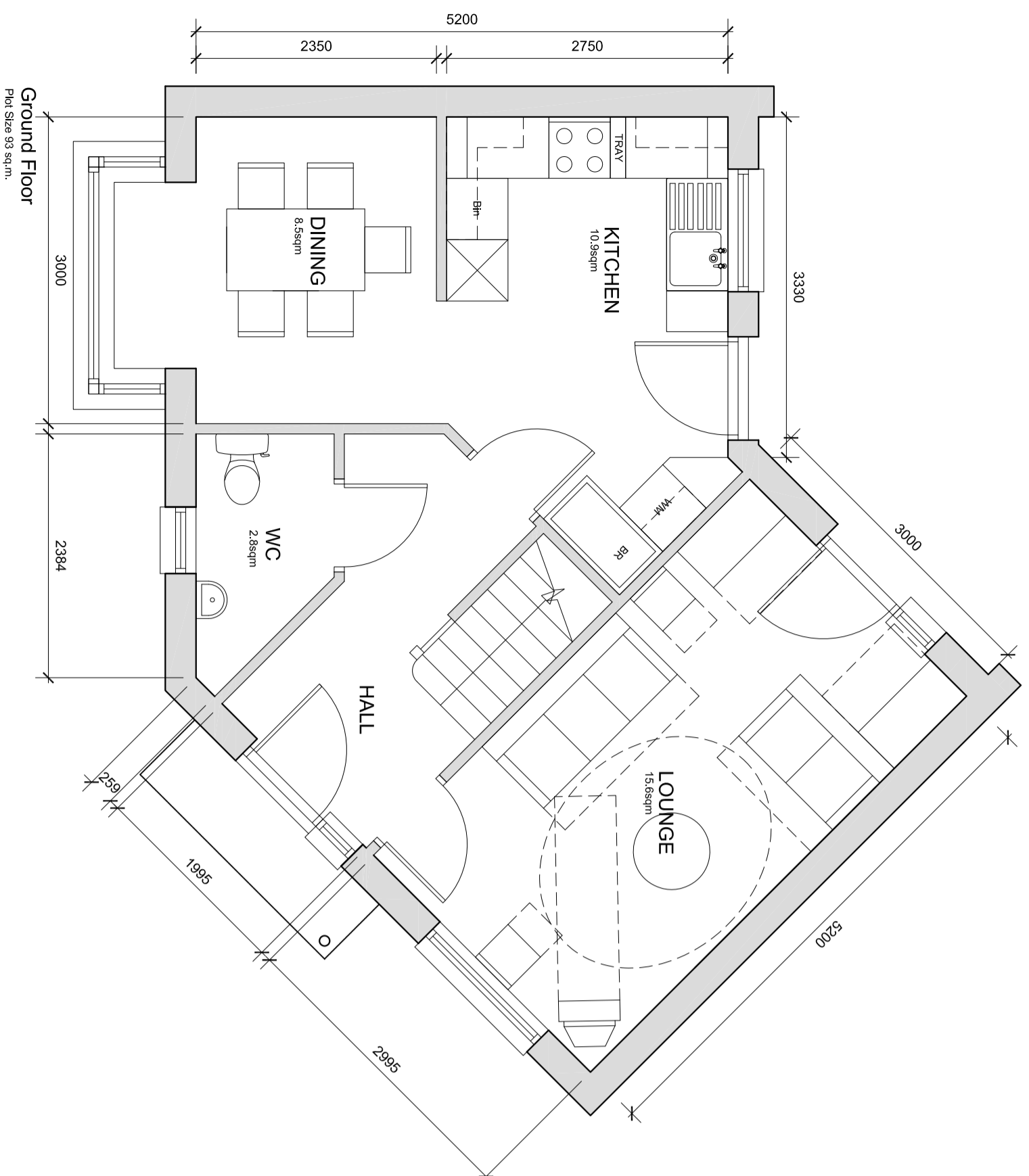


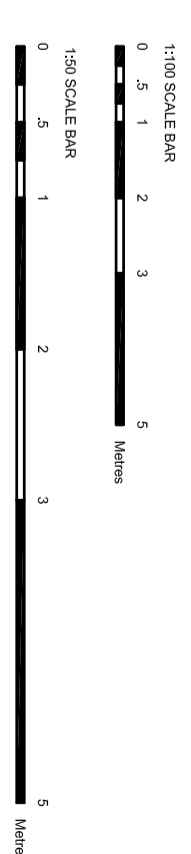
The general contractor is responsible for the verification of dimensions on site and the declared B10 to be returned of any discrepancy.  
The status of information contained in a computer generated drawing shall be verified to that conveyed by the paper copy.

References:

- A. 25.07.08 CO Kitchen/Dining front window and entrance detail
- B. 28.07.08 CO Window arrangement related to layout more effectively
- C. 01.08.08 C.0007 GA plans overlaid and furniture added to site.



1. F1. Quality facing brickwork
2. Through coloured render system (ie. Sto / Weber or similar approved)
3. 25mm x 125mm horizontal timber F/W boarding on vertical tanalised softwood battens. Timber to be head tied European Redwood, from certified managed sustainable forests (ie. Finnforest Thermowood or similar approved)
4. Stained timber framed double glazed windows
5. Interlocking concrete tiled roof
6. Soldier course detail
7. Projecting entrance canopy with pressed metal colourcoated edge detail
8. Poroper wall with pressed metal coping finished over from roof.
9. galvanneal steel ballustrade
10. colourcoated pressed metal panel



# 3b5p - Corner Unit

## New Lodge Crescent, Barnsley

### Yorkshire Housing



Scale: 1:100/1:50 @ A2  
Date: JULY 2008  
Drawn: RJJ  
Dwg No: 2121-01-S124-C