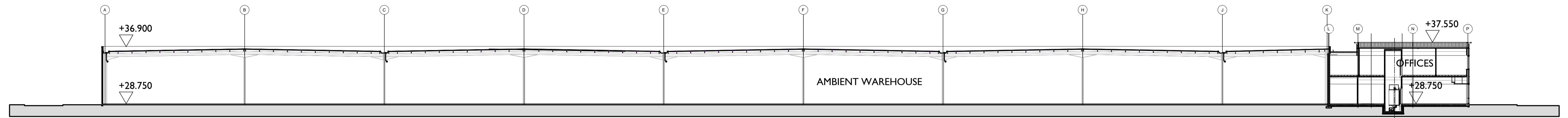
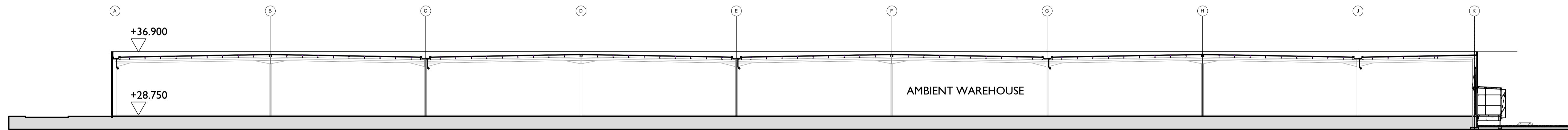


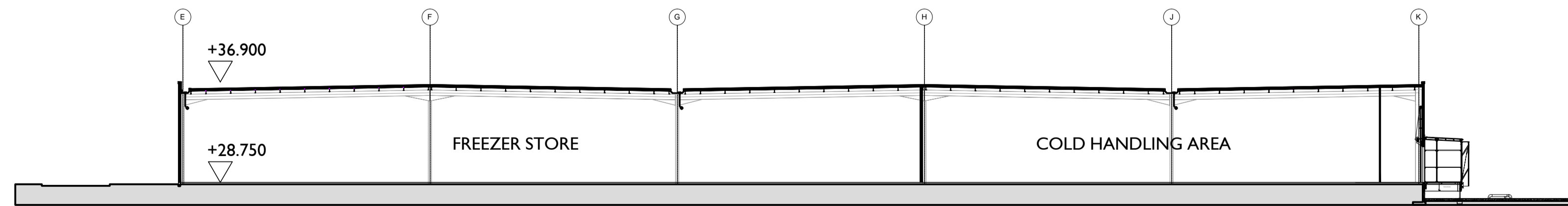
SECTION A-A



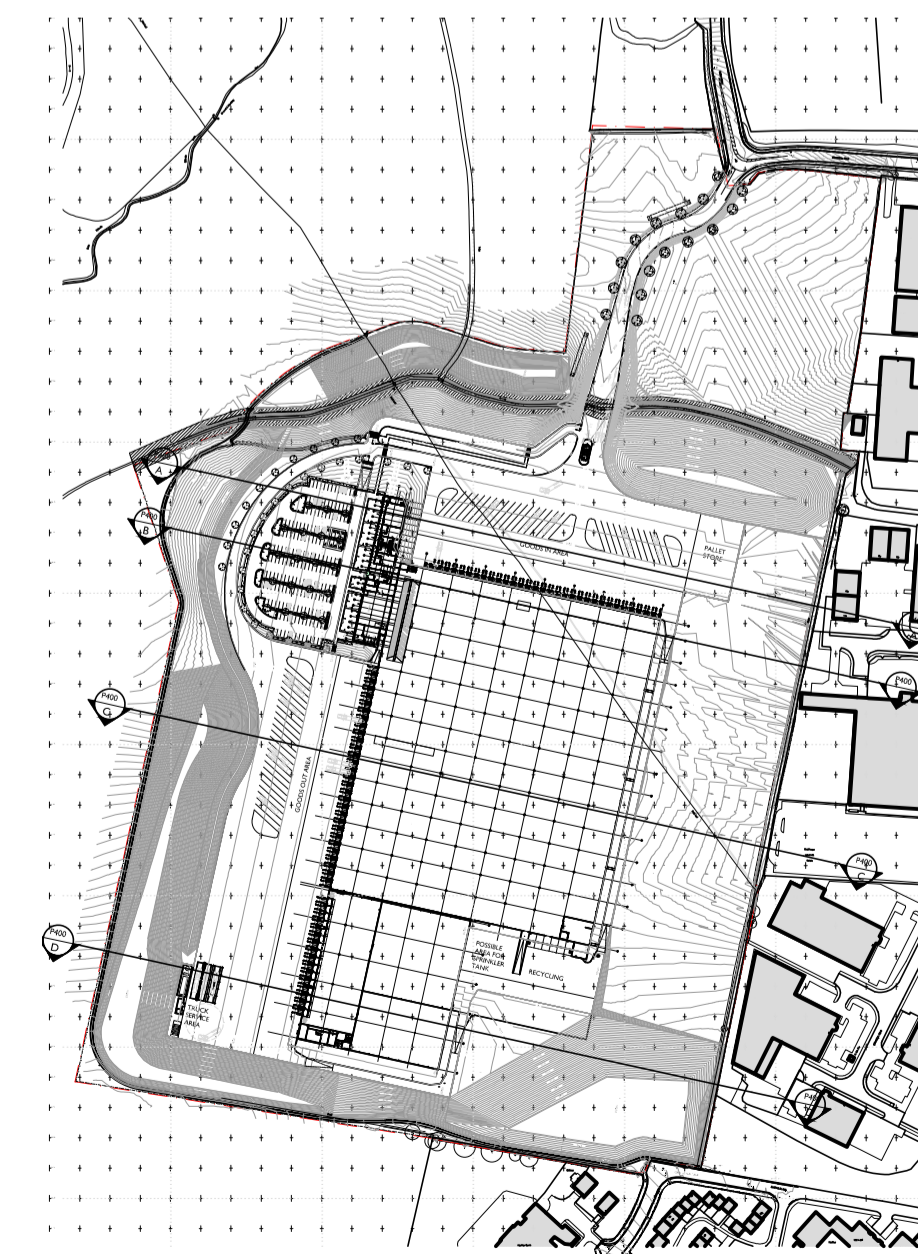
SECTION B-B



SECTION C-C



SECTION D-D



PLAN 1:5000

Dalkin Scotton Partnership  
Architects Limited  
**PLANNING ISSUE**

Revision	Description	Date	Drawn	Checked
A	REVISED TO CLIENT COMMENT. 11.09.12	17.09.12	DJN	SB

DALKIN SCOTTON PARTNERSHIP  
ARCHITECTS LIMITED  
305 FORT DUNLOP FORT PARKWAY BIRMINGHAM B24 9FD  
TEL - 0121 747 1943  
FAX - 0121 747 1944  
www.dsparchitects.com

CLIENT ALDI STORES LTD.

PROJECT GOLDTHORPE INDUSTRIAL ESTATE  
COMMERCIAL ROAD, GOLDTHORPE  
TITLE REGIONAL DISTRIBUTION CENTRE  
GENERAL SECTIONS

DATE 05.07.12 SCALE 1:300 @ A1 DRAWN DJN CHECKED SB

DWG No. Y11A25-01-P400 REVISION A NORTH



ALL DRAWINGS TO BE CHECKED BY THE ARCHITECTS PARTNERSHIP AND APPROVED TO BE PRINTED TO DALKIN SCOTTON PARTNERSHIP ARCHITECTS LIMITED. THE DRAWINGS ARE NOT TO BE USED FOR ANY OTHER PURPOSE WITHOUT THE WRITTEN CONSENT OF DALKIN SCOTTON PARTNERSHIP ARCHITECTS LIMITED. THE DRAWING IS THE PROPERTY OF DALKIN SCOTTON PARTNERSHIP ARCHITECTS LIMITED AND IS NOT TO BE REPRODUCED, COPIED OR TRANSMITTED IN ANY FORM OR BY ANY MEANS WITHOUT THE WRITTEN CONSENT OF DALKIN SCOTTON PARTNERSHIP ARCHITECTS LIMITED.