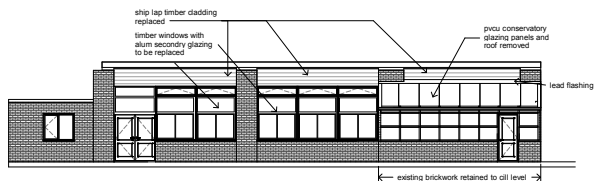


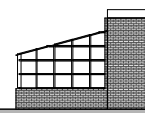
1 Level 2
1 : 100



2 North
1 : 100



3 East
1 : 100



4 West
1 : 100



General Ction Site Safety and Hazard Elimination

- Contractor to ensure all his operatives are adequately trained in accordance with the Employers Contractor selection criteria.
- Ensure use of appropriate PPE.
- Ensure risk assessments and method statements are produced and available for inspection.
- Eliminate site access to public with erection of dustproof enclosures or hoardings as specified.
- Erect safety signage as specified to all hoardings.
- Ensure operatives are signed in and inducted.
- Asbestos - Ensure RAD survey and any removal works by Trust are completed. Inform Trust of any suspicious materials immediately.
- CO2/H₂ - Trust to remove all substances from site area prior to works where possible.
- Confined spaces - ensure 2 operatives carry out services investigations in confined spaces, any works subject to method statement.
- Slips, trips and falls - ensure good house keeping at all times.
- Manual handling - use lightweight materials where possible.

Site Specific

- Services - Ensure all services are isolated prior to demolition.
- Legionella - Adhere to Trust Policy when planning work on Hospital services and implement preventive methods of work.
- Keep plant rooms locked at all times.
- Hot works permit to work system in place - seek advice from Trust Project Manager.
- Drainage - Drains in Hospitals could contain hazardous waste, ensure drains are clear of bio-hazards and flow from upstream is stopped prior to any works.

H&S notes
1 : 100



Tender

Physiotherapy Relocation

Existing Layout

Project number	C20/19
Date	Aug. 2020
Drawn by	BFS
Checked by	
C20/19 01	
Scale	1 : 100