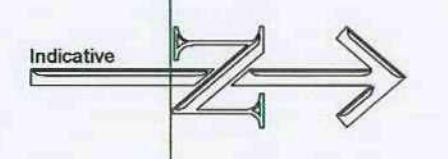


NOTES

- 1. The drawings are prepared in accordance with the Building Regulations 2010 and the Building Regulations 2010 (Approved Document A).
- 2. All dimensions are to be checked on the site before construction.
- 3. The drawings are for information only. Any quantities are for information only.

MATERIALS PROHIBITED

- 1. Materials prohibited from use except where used in accordance with the Building Regulations 2010 (Approved Document A):
 - a) High strength cementitious floor slabs.
 - b) High strength cementitious floor slabs.
 - c) High strength cementitious floor slabs.
 - d) High strength cementitious floor slabs.
 - e) High strength cementitious floor slabs.
 - f) High strength cementitious floor slabs.
 - g) High strength cementitious floor slabs.
 - h) High strength cementitious floor slabs.
 - i) High strength cementitious floor slabs.
 - j) High strength cementitious floor slabs.
 - k) High strength cementitious floor slabs.
 - l) High strength cementitious floor slabs.
 - m) High strength cementitious floor slabs.
 - n) High strength cementitious floor slabs.
 - o) High strength cementitious floor slabs.
 - p) High strength cementitious floor slabs.
 - q) High strength cementitious floor slabs.
 - r) High strength cementitious floor slabs.
 - s) High strength cementitious floor slabs.
 - t) High strength cementitious floor slabs.
 - u) High strength cementitious floor slabs.
 - v) High strength cementitious floor slabs.
 - w) High strength cementitious floor slabs.
 - x) High strength cementitious floor slabs.
 - y) High strength cementitious floor slabs.
 - z) High strength cementitious floor slabs.



- **REVISION DETAILS** **DATE/BY**
- Preliminary
- For Approval
- Tender
- Construction
- **CLIENT**
- Kekborough House
- Kekborough House
- Two and a half storey care home,
- Churchfield Lane, Kekborough
- Barnsley
- DRAWING NO.**
- Existing Site Plan
- SCALE**
- 1:200 @ A1
- DRAWING NO.**
- DATE**
- 08-11-100
- DESIGNER**
- CJ
- CHECKER**
- Sep1 08

07 OCT 2008
 07 OCT 2008
 07 OCT 2008



08-011-120

DRAWING NO. [REDACTED] revision

SCALE: 1:100 @ A1
 DRAWN BY: [REDACTED] C J
 DATE: 10 Sep 08

PROJECT: Lower Ground Floor Plan

DRAWING TITLE: Two and a half storey care home, Churchfield Lane, Kexborough

PROJECT: Kexborough House

CLIENT: [REDACTED]

Construction

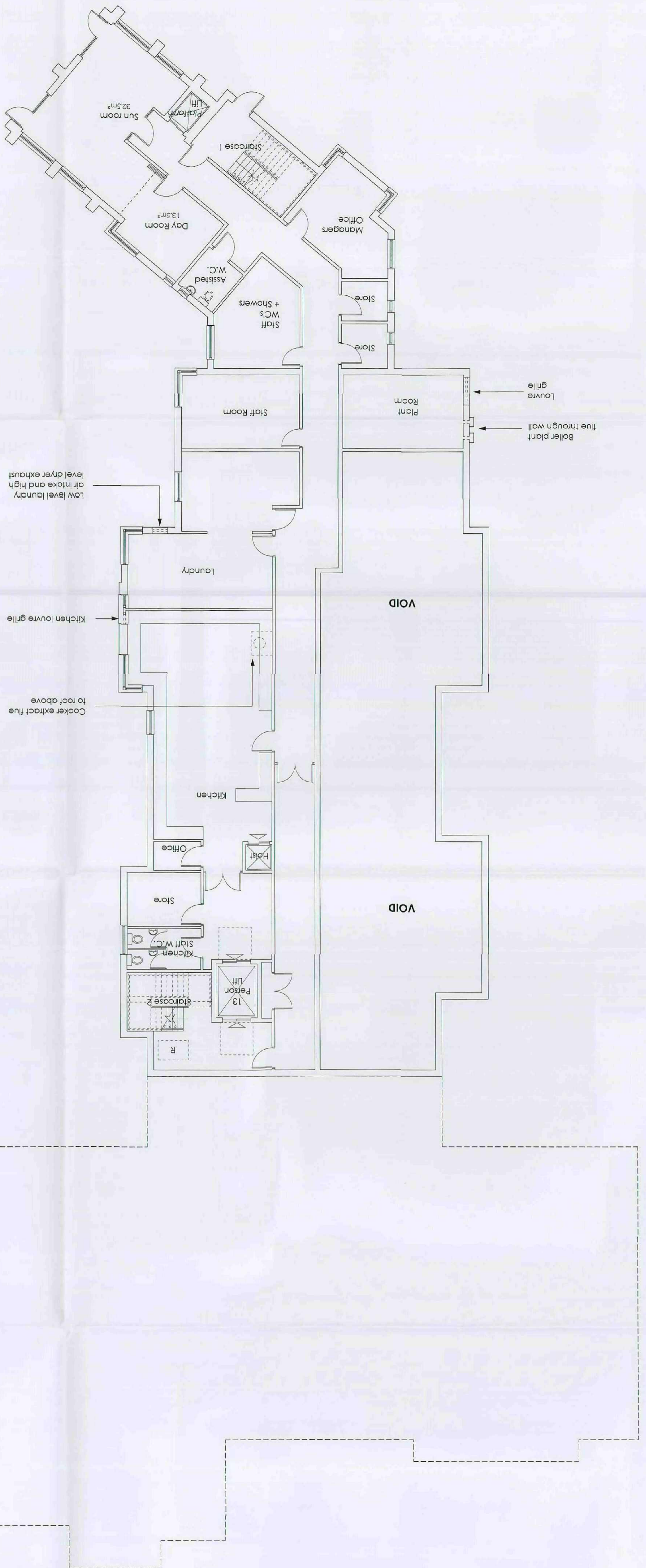
Tender

For Approval

Preliminary

REVISION DETAILS date / by

07 OCT 2008
 Kexborough Council
 Planning Committee



- NOTES**
- 1. The drawing is copyright of Candy and Liffhouse Ltd and may not be reproduced in any form without their specific permission.
 - 2. All dimensions are to be checked on site to not deviate from the drawing, work to agreed dimensions only. Any queries please contact the architect.
 - 3. The drawing has been prepared based upon a digital survey undertaken by XXXX, IN 0000 0000.
 - 4. MATERIALS PROHIBITED
 - 5. Materials prohibited from use, except where used in accordance with good practice in the selection of construction materials BS2022.
 - 6. High volume cement in load bearing structures.
 - 7. Wood wood studs used on permanent building or structural elements.
 - 8. Calcium chloride used on additional in-situ concrete for use in reinforced concrete.
 - 9. Aggregates for use in reinforced concrete which do not comply with British Standard specifications current in the date of publication of the materials.
 - 10. Calcium chloride blocks or tiles.
 - 11. Admixtures or other non-structural products including pro-cure.
 - 12. Lead or any products containing lead which may be ingested, inhaled or absorbed.
 - 13. Lead based or other hazardous materials which may be hazardous to the health.
 - 14. Lead based or other hazardous materials which may be hazardous to the health.
 - 15. Lead based or other hazardous materials which may be hazardous to the health.
 - 16. Lead based or other hazardous materials which may be hazardous to the health.
 - 17. Lead based or other hazardous materials which may be hazardous to the health.
 - 18. Lead based or other hazardous materials which may be hazardous to the health.
 - 19. Lead based or other hazardous materials which may be hazardous to the health.
 - 20. Lead based or other hazardous materials which may be hazardous to the health.

Jarvis Metropolitan Borough Council
07 OCT 2008
Dispute resolution

T: 0151 207 4371 • F: 0151 207 7087



08-011-122

SCALE: drawn by date
1:100 @ A1 C.J. Sept 08

DRAWING NO: revision

PROJECT: Two and a half storey care home, Churchfield Lane, Kexborough

CLIENT: Kexborough House

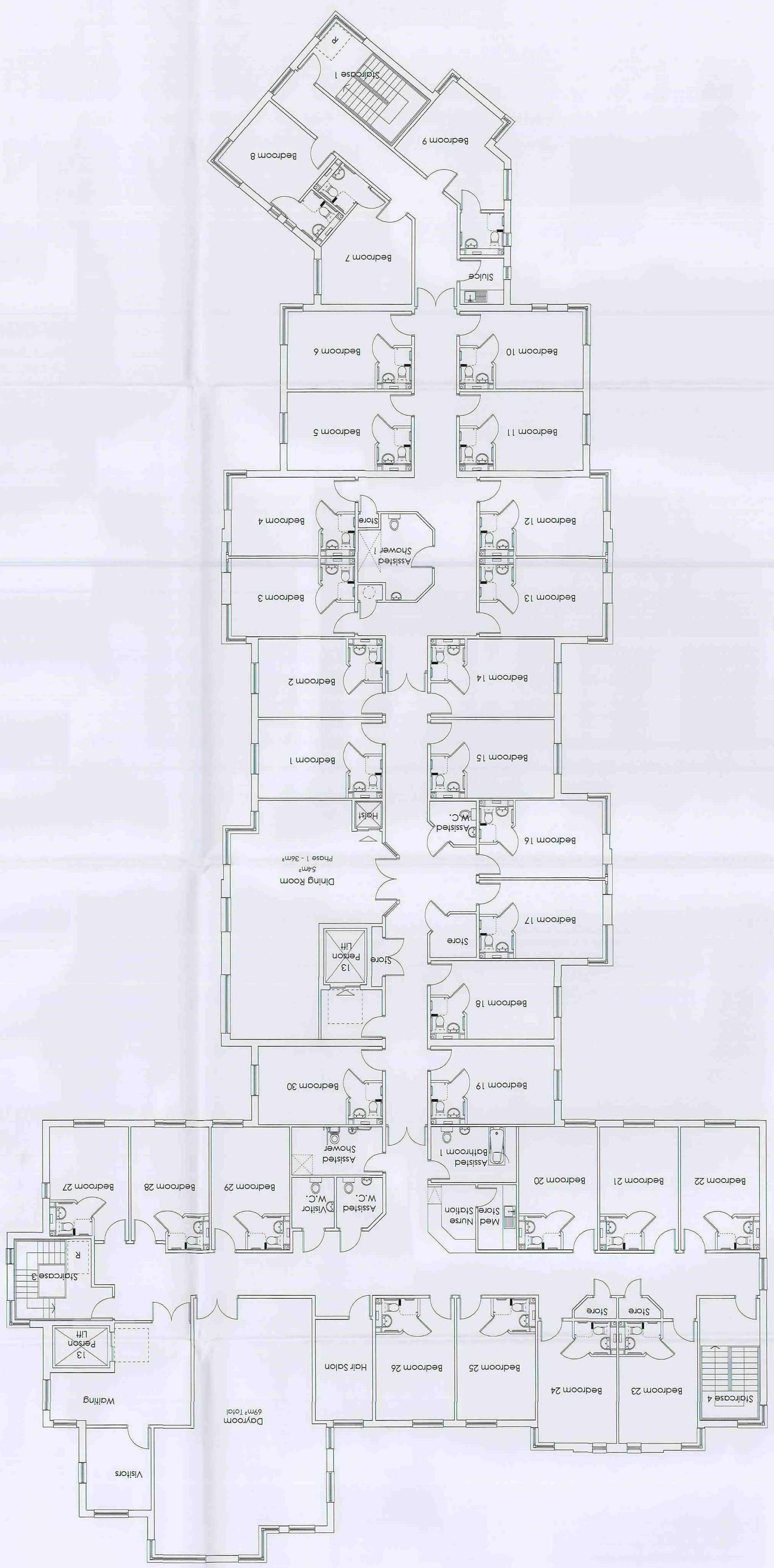
STATUS: Preliminary

STATUS: For Approval

STATUS: Tender

STATUS: Construction

REVISION DATES / BY



Materials prohibited from use, except where used in accordance with 'good practice' in the selection of construction materials (2007)

Right of way reserved for road widening schemes.

Wood wool used on perimeter finishing or structural elements.

Calcium chloride used on concrete for use in reinforced concrete.

Aggregates for use in reinforced concrete which do not comply with British Standard specifications current at the date of specification of the materials.

Calcium hydroxide or lime.

Asbestos or asbestos based products including asbestos.

Lead or any material containing lead which may be ingested, inhaled or absorbed.

Use of non-ferrous metal or materials which may be hazardous with reference to the risks set by the health & safety executive at the date of specification of the materials.

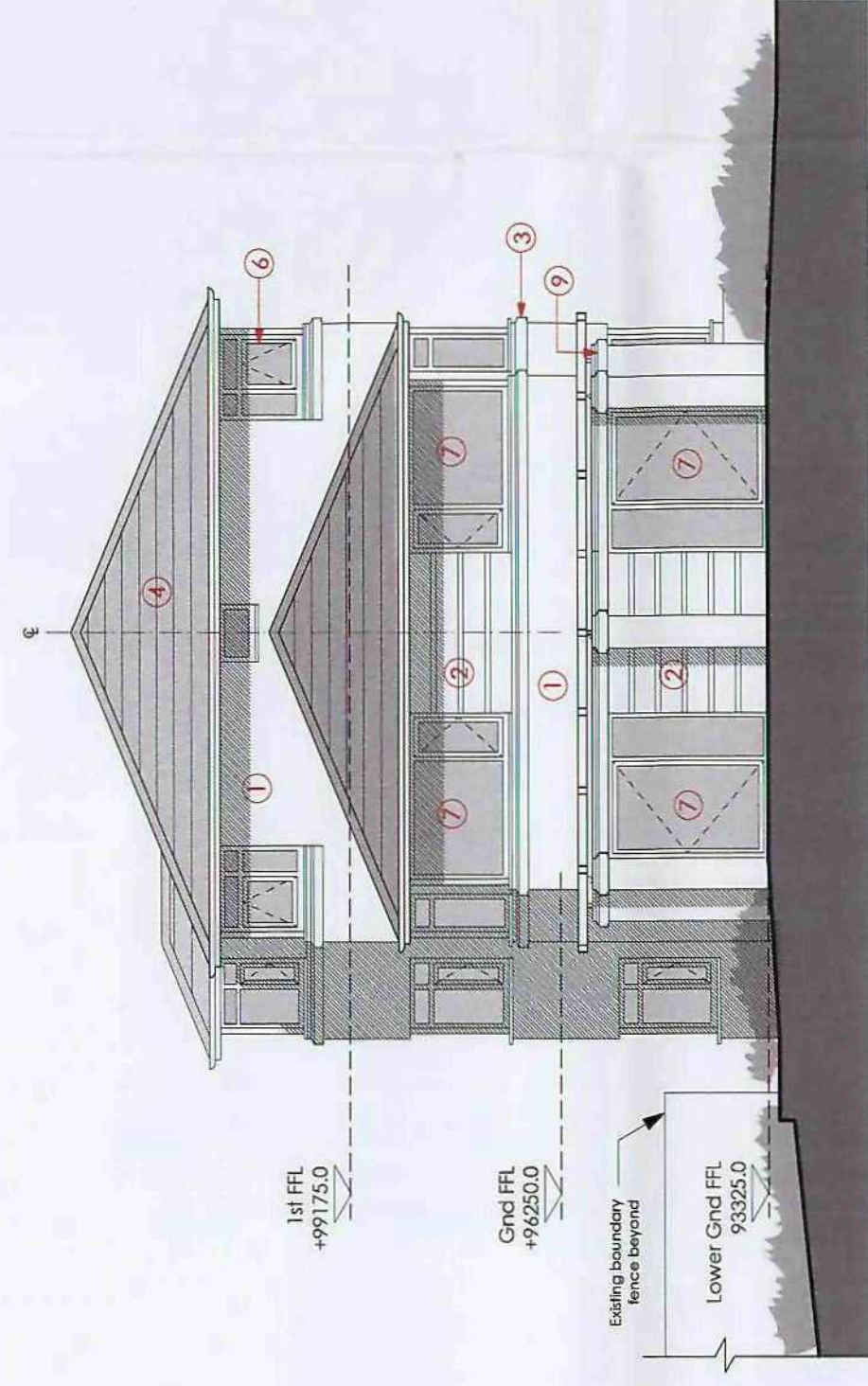
Materials which are generally composed of mineral fibres either man-made or naturally occurring which have a density of 2.55 or less and a length of 200 microns or less, or which contain any fibres not listed or otherwise specified to ensure that free respiration is prevented.

MATERIALS PROHIBITED

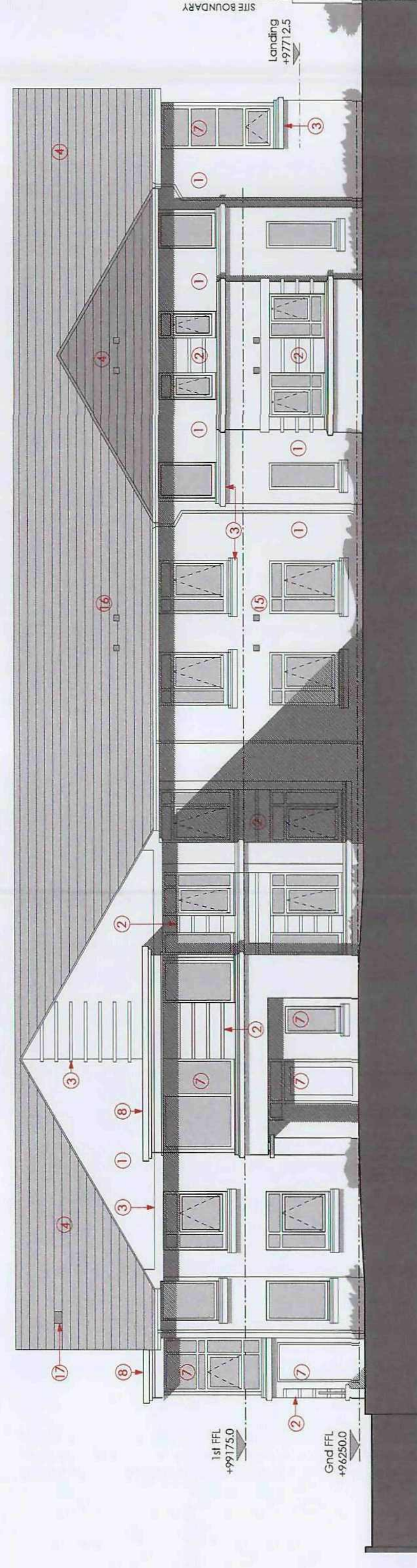
- The drawing is copyright of Condy & Lofthouse Ltd. and may not be reproduced in any way without their explicit permission.
- All dimensions are to be checked on site. Do not scale from the drawing, work to signed dimensions only. Any queries please contact the architect.
- The drawing has been prepared based upon a digital survey undertaken by XXXX, tel: 0000 000 0000.
- MATERIALS PROHIBITED

NOTES

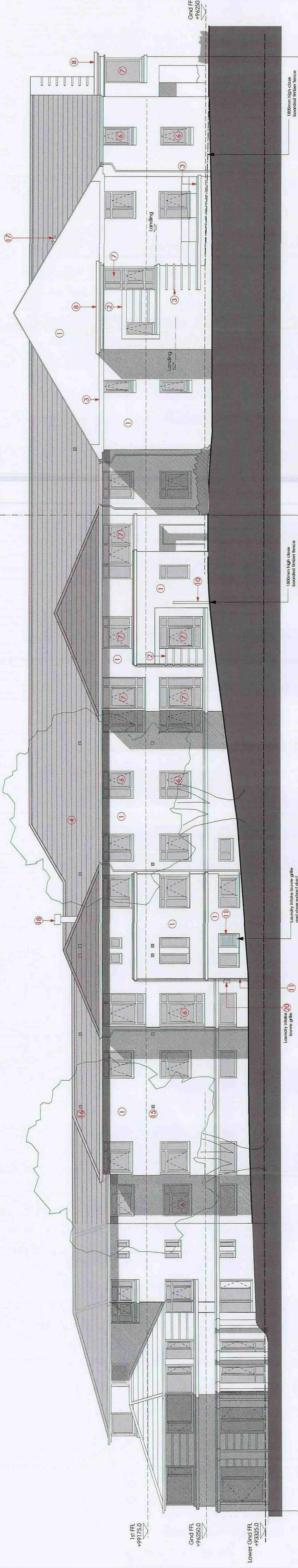
ELEVATION B (EAST)



ELEVATION C (SOUTH)



ELEVATION A (NORTH)



PHASE 2

PHASE 1

ELEVATION B (EAST)

GENERAL NOTES:
 1. Refer to Material Notes on this drawing apply to all elevations.
 2. All materials to be approved by Barnsley Metropolitan Borough Council Planning Department.
 3. External works and planting are indicative only. See Landscape Architect's drawings and specifications.

MATERIAL KEY FOR ELEVATIONS

- 1 Clay facing brick
- 2 Glazed brick panel with thin profile cast stone banding
- 3 Cast stone sill, coping or banding
- 4 Artificial slate roof tile with thin leading edge
- 5 Factory finished front board soffit or fascia
- 6 UPVC window
- 7 Where not white windows to have paint powder coated aluminium fenestration window/door assembly, or curtain wall
- 8 Powder coated metal roof edge trim and soffit detail
- 9 Timber pergola structure to take climbing planting
- 10 1800 High timber boarded panel fencing with concrete posts
- 11 Powder coated louvers

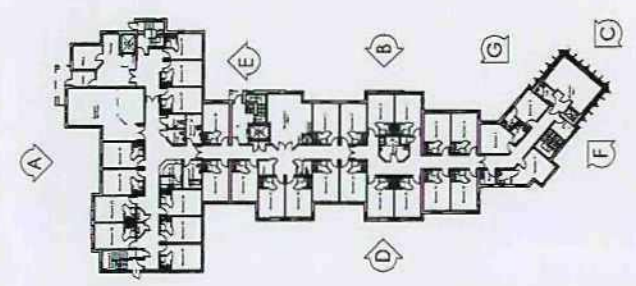
- 12 Roof mounted solar panels (size and details indicative)
- 13 Soft planting (indicative only - see separate Landscaping Architects proposal)
- 14 Balustrade (size indicative and to be determined by detail design stage)
- 15 Individual Wall Mounted Flexible mechanical extract grille - Ground & Lower Ground (to all bedrooms and serving all inner rooms, bathrooms and toilets. Locations and numbers indicative)
- 16 Individual Roof Mounted Flexible mechanical extract grille - First Floor (to all bedrooms and serving all inner rooms, bathrooms and toilets. Locations and numbers indicative)
- 17 Uplift vent cover
- 18 Kitchen extract flue termination
- 19 UPVC gutters and downpipes
- 20 County eye extract wall termination

NOTES

- 1 This drawing is copyright of Condy and Lofthouse Ltd, and may not be reproduced in any way without their specific permission.
- 2 All dimensions are to be indicated unless stated otherwise.
- 3 The drawing has been prepared based on a digital survey of the site.

MATERIALS PROHIBITED

- 1 Materials prohibited from use, except where used in accordance with 'good practice' as the result of construction methods (P207)
- 2 High cement content board facing bricks
- 3 Cementitious concrete used as an additive in making concrete for use in reinforced concrete.
- 4 Aggregates for use in reinforced concrete with a maximum size of aggregate of 10mm.
- 5 Concrete blocks with a maximum size of aggregate of 10mm.
- 6 Adhesive or adhesive based products including conductive.
- 7 Adhesive or adhesive based products including conductive.
- 8 Adhesive or adhesive based products including conductive.
- 9 Adhesive or adhesive based products including conductive.
- 10 Adhesive or adhesive based products including conductive.
- 11 Adhesive or adhesive based products including conductive.
- 12 Adhesive or adhesive based products including conductive.
- 13 Adhesive or adhesive based products including conductive.
- 14 Adhesive or adhesive based products including conductive.
- 15 Adhesive or adhesive based products including conductive.
- 16 Adhesive or adhesive based products including conductive.
- 17 Adhesive or adhesive based products including conductive.
- 18 Adhesive or adhesive based products including conductive.
- 19 Adhesive or adhesive based products including conductive.
- 20 Adhesive or adhesive based products including conductive.



KEY PLAN

- REVISIONS**
- 1 Preliminary
 - 2 For Approval
 - 3 Tender
 - 4 Construction
- CLIENT**
 Kexborough House

PROJECT
 Two and half storey care home,
 Churchfield Lane, Kexborough,
 Barnsley.

DRAWING DATE
 Elevations: A, B & C

SCALE
 DRAWING: 1:100 @ A1
 AT 06.10.2008

DRAWING NO.
 08-011-150

REVISION

Condy & Lofthouse Architects
 T: 0151 207 4371 • F: 0151 207 7087



ELEVATION D (WEST)

PHASE 2

PHASE 1

NOTES

- The building is intended to be a permanent structure. It is not intended to be a temporary structure.
- All dimensions are to be finished unless otherwise stated.
- All dimensions are to be taken from the finished ground level unless otherwise stated.
- All dimensions are to be taken from the finished ground level unless otherwise stated.
- All dimensions are to be taken from the finished ground level unless otherwise stated.

MATERIALS PROHIBITED

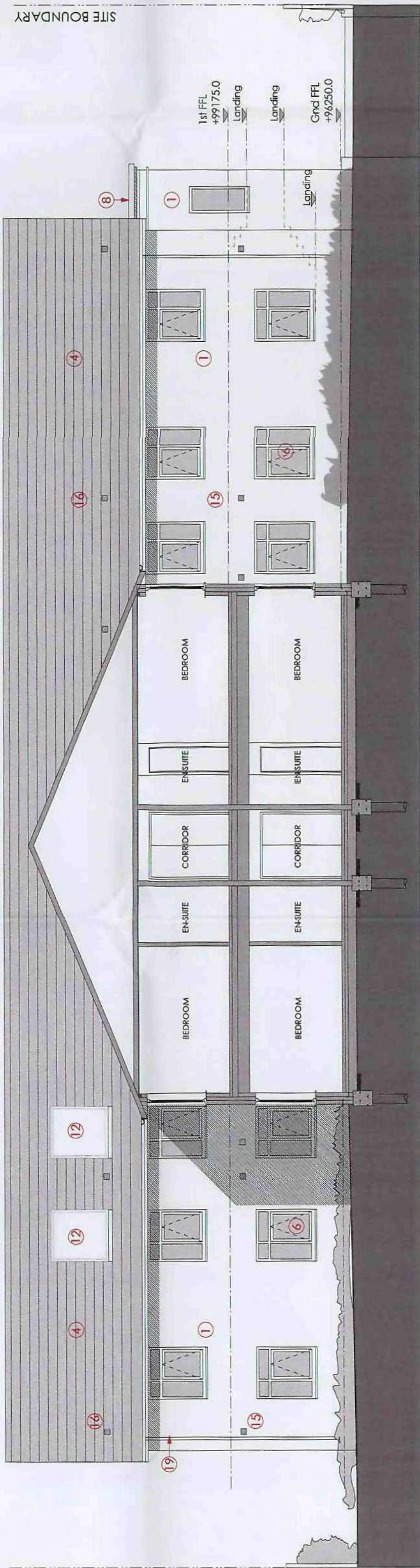
- a. High strength concrete (HSC) for structural elements.
- b. Wood used for permanent finishing or in structural elements.
- c. Cast-in-place concrete used as an alternative to precast concrete for use in structural elements.
- d. Cast-in-place concrete used as an alternative to precast concrete for use in structural elements.
- e. Cast-in-place concrete used as an alternative to precast concrete for use in structural elements.
- f. Cast-in-place concrete used as an alternative to precast concrete for use in structural elements.
- g. Cast-in-place concrete used as an alternative to precast concrete for use in structural elements.
- h. Cast-in-place concrete used as an alternative to precast concrete for use in structural elements.
- i. Cast-in-place concrete used as an alternative to precast concrete for use in structural elements.
- j. Cast-in-place concrete used as an alternative to precast concrete for use in structural elements.

MATERIAL KEY FOR ELEVATIONS

- 1 Clay facing brick
- 2 Glazed brick panel with thin profile cast stone banding
- 3 Cast stone cill, coping or banding
- 4 Artificia slate roof tile with thin leading edge
- 5 Factory finished inert board sill or fascia
- 6 UPVC window
- 7 Where not white windows to have paint applied finish
- 8 Cast aluminium fenestration window door assembly or curtain wall
- 9 Powder coated metal roof edge fin and soffit detail
- 10 Timber pergola structure to take climbing planting
- 11 1800 high timber boarded panel fencing with concrete posts
- 12 Powder coated louvers
- 13 Roof mounted solar panels (size and details indicative)
- 14 Soft planting (indicative only - see separate Landscaping Architects proposal)
- 15 Boiler flues (size indicative and to be determined at detail design stage)
- 16 Individual Wall Mounted En-suite mechanical extract grille - First Floor (to all bedrooms and serving all inner rooms, bathrooms and toilets. Locations and numbers Indicative)
- 17 Individual Wall Mounted En-suite mechanical extract grille - First Floor (to all bedrooms and serving all inner rooms, bathrooms and toilets. Locations and numbers Indicative)
- 18 Lift shaft vent cover
- 19 Kitchen extract flue termination
- 20 UPVC quelling and downpipes
- 21 County dryer extract wall termination

GENERAL NOTES:

1. All materials to be specified in the Bill of Materials.
2. All materials to be approved by the Council Planning Department.
3. Extreme work and planning are indicative only. See Landscape Architects drawings and specifications.



ELEVATION E (SOUTH-PHASE 2)

SITE BOUNDARY

ACCESS ROAD

1st FFL +99175.0

0nd FFL +99175.0

LOWER 0nd FFL +93205.0

1st FFL +99175.0

0nd FFL +99175.0

LOWER 0nd FFL +93205.0

1st FFL +99175.0

0nd FFL +99175.0

LOWER 0nd FFL +93205.0

1st FFL +99175.0

0nd FFL +99175.0

LOWER 0nd FFL +93205.0

1st FFL +99175.0

0nd FFL +99175.0

LOWER 0nd FFL +93205.0

1st FFL +99175.0

0nd FFL +99175.0

LOWER 0nd FFL +93205.0

1st FFL +99175.0

0nd FFL +99175.0

LOWER 0nd FFL +93205.0

1st FFL +99175.0

0nd FFL +99175.0

LOWER 0nd FFL +93205.0

1st FFL +99175.0

0nd FFL +99175.0

LOWER 0nd FFL +93205.0

1st FFL +99175.0

0nd FFL +99175.0

LOWER 0nd FFL +93205.0

1st FFL +99175.0

0nd FFL +99175.0

LOWER 0nd FFL +93205.0

1st FFL +99175.0

0nd FFL +99175.0

LOWER 0nd FFL +93205.0

1st FFL +99175.0

0nd FFL +99175.0

LOWER 0nd FFL +93205.0

1st FFL +99175.0

0nd FFL +99175.0

LOWER 0nd FFL +93205.0

1st FFL +99175.0

0nd FFL +99175.0

LOWER 0nd FFL +93205.0

1st FFL +99175.0

0nd FFL +99175.0

LOWER 0nd FFL +93205.0

1st FFL +99175.0

0nd FFL +99175.0

LOWER 0nd FFL +93205.0

1st FFL +99175.0

0nd FFL +99175.0

LOWER 0nd FFL +93205.0

1st FFL +99175.0

0nd FFL +99175.0

LOWER 0nd FFL +93205.0

1st FFL +99175.0

0nd FFL +99175.0

LOWER 0nd FFL +93205.0

1st FFL +99175.0

0nd FFL +99175.0

LOWER 0nd FFL +93205.0

1st FFL +99175.0

0nd FFL +99175.0

LOWER 0nd FFL +93205.0

1st FFL +99175.0

0nd FFL +99175.0

LOWER 0nd FFL +93205.0

1st FFL +99175.0

0nd FFL +99175.0

LOWER 0nd FFL +93205.0

1st FFL +99175.0

0nd FFL +99175.0

LOWER 0nd FFL +93205.0

1st FFL +99175.0

0nd FFL +99175.0

LOWER 0nd FFL +93205.0

1st FFL +99175.0

0nd FFL +99175.0

LOWER 0nd FFL +93205.0

1st FFL +99175.0

0nd FFL +99175.0

LOWER 0nd FFL +93205.0

1st FFL +99175.0

0nd FFL +99175.0

LOWER 0nd FFL +93205.0

1st FFL +99175.0

0nd FFL +99175.0

LOWER 0nd FFL +93205.0

1st FFL +99175.0

0nd FFL +99175.0

LOWER 0nd FFL +93205.0

1st FFL +99175.0

0nd FFL +99175.0

LOWER 0nd FFL +93205.0

1st FFL +99175.0

0nd FFL +99175.0

LOWER 0nd FFL +93205.0

1st FFL +99175.0

0nd FFL +99175.0

LOWER 0nd FFL +93205.0

1st FFL +99175.0

0nd FFL +99175.0

LOWER 0nd FFL +93205.0

1st FFL +99175.0

0nd FFL +99175.0

LOWER 0nd FFL +93205.0

1st FFL +99175.0

0nd FFL +99175.0

LOWER 0nd FFL +93205.0

1st FFL +99175.0

0nd FFL +99175.0

LOWER 0nd FFL +93205.0

1st FFL +99175.0

0nd FFL +99175.0

LOWER 0nd FFL +93205.0

1st FFL +99175.0

0nd FFL +99175.0

LOWER 0nd FFL +93205.0

1st FFL +99175.0

0nd FFL +99175.0

LOWER 0nd FFL +93205.0

1st FFL +99175.0

0nd FFL +99175.0

LOWER 0nd FFL +93205.0

1st FFL +99175.0

0nd FFL +99175.0

LOWER 0nd FFL +93205.0

1st FFL +99175.0

0nd FFL +99175.0

LOWER 0nd FFL +93205.0

1st FFL +99175.0

0nd FFL +99175.0

LOWER 0nd FFL +93205.0

1st FFL +99175.0

0nd FFL +99175.0

LOWER 0nd FFL +93205.0

1st FFL +99175.0

0nd FFL +99175.0

LOWER 0nd FFL +93205.0

1st FFL +99175.0

0nd FFL +99175.0

LOWER 0nd FFL +93205.0

1st FFL +99175.0

0nd FFL +99175.0

LOWER 0nd FFL +93205.0

1st FFL +99175.0

0nd FFL +99175.0

LOWER 0nd FFL +93205.0

1st FFL +99175.0

0nd FFL +99175.0

LOWER 0nd FFL +93205.0

1st FFL +99175.0

0nd FFL +99175.0

LOWER 0nd FFL +93205.0

1st FFL +99175.0

0nd FFL +99175.0

LOWER 0nd FFL +93205.0

1st FFL +99175.0

0nd FFL +99175.0

LOWER 0nd FFL +93205.0

1st FFL +99175.0

0nd FFL +99175.0

LOWER 0nd FFL +93205.0

1st FFL +99175.0

0nd FFL +99175.0

LOWER 0nd FFL +93205.0

1st FFL +99175.0

0nd FFL +99175.0

LOWER 0nd FFL +93205.0

1st FFL +99175.0

0nd FFL +99175.0

LOWER 0nd FFL +93205.0

1st FFL +99175.0

0nd FFL +99175.0

LOWER 0nd FFL +93205.0

1st FFL +99175.0

0nd FFL +99175.0

LOWER 0nd FFL +93205.0

1st FFL +99175.0

0nd FFL +99175.0

LOWER 0nd FFL +93205.0

1st FFL +99175.0

0nd FFL +99175.0

LOWER 0nd FFL +93205.0

1st FFL +99175.0

0nd FFL +99175.0

LOWER 0nd FFL +93205.0

1st FFL +99175.0

0nd FFL +99175.0

LOWER 0nd FFL +93205.0

1st FFL +99175.0

0nd FFL +99175.0

LOWER 0nd FFL +93205.0

1st FFL +99175.0

0nd FFL +99175.0

LOWER 0nd FFL +93205.0

1st FFL +99175.0

0nd FFL +99175.0

LOWER 0nd FFL +93205.0

1st FFL +99175.0

0nd FFL +99175.0

LOWER 0nd FFL +93205.0

1st FFL +99175.0

0nd FFL +99175.0

LOWER 0nd FFL +93205.0

1st FFL +99175.0

0nd FFL +99175.0

LOWER 0nd FFL +93205.0

1st FFL +99175.0

0nd FFL +99175.0

LOWER 0nd FFL +93205.0

1st FFL +99175.0

0nd FFL +99175.0

LOWER 0nd FFL +93205.0

1st FFL +99175.0

0nd FFL +99175.0

