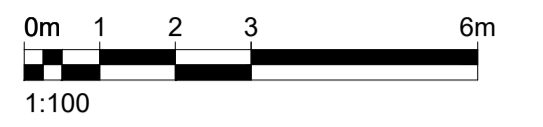


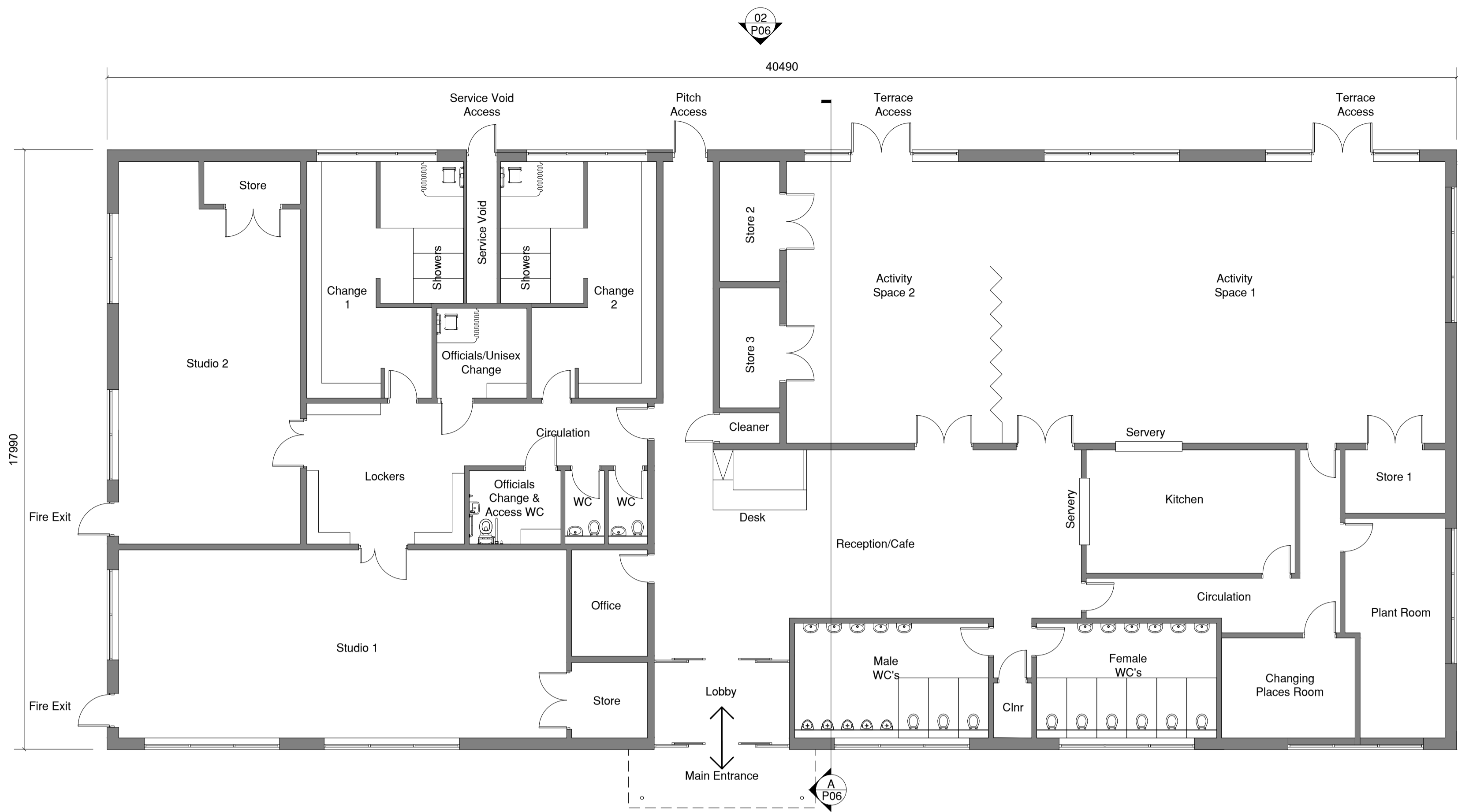
DO NOT SCALE FROM THIS DRAWING. ALL DIMENSIONS TO BE CHECKED ON SITE BY CONTRACTOR. REPORT ANY DISCREPANCIES TO DRAWING AUTHOR AND PROPERTY SERVICES TEAM. DRAWING OR CONTENTS SHOULD NOT BE DUPLICATED WITHOUT PRIOR CONSENT.

DRAWING TO BE READ IN CONJUNCTION WITH ALL OTHER PROJECT DOCUMENTS INCLUDING BUT NOT LIMITED TO DRAWINGS, SPECIFICATIONS, SCHEDULES



NOTES

- 728m² Footprint (GEA)
(687 GIA)
- Lobby - 10m²
- Reception/Cafe/Seating Area - 71m²
- Office - 7.3m²
- Circulation - 40m²
- Activity Space 1 - 112m²
- Store 1 - 5.7m²
- Activity Space 2 - 54.7m²
- Store 2 - 6.4m²
- Store 3 - 6.4m²
- Kitchen - 23.1m²
- Cleaner 1 - 1.9m²
- Male WC's - 20m²
- Female WC's - 18.5m²
- Changing Places Room - 12m²
- Change 1 - 20.1m²
- Change 1 Showers/WC - 10.6m²
- Change 2 - 19.2m²
- Change 2 Showers/WC - 10.6m²
- Officials/Unisex Change - 7.2m²
- Officials Change/Access WC - 6m²
- Lockers - 20.9m²
- Cleaner 2 - 1.6m²
- WC - 2.5m²
- WC - 2.5m²
- Studio 1 - 75.7m²
- Studio 1 Store - 5.2m²
- Studio 2 - 58m²
- Studio 2 Store - 3.7m²
- Plant Room - 18.4m²
- Service Void - 3.87m²
- Room Areas Total 655m²



01 Proposed Floor Plan
1:100



02 Proposed Roof Plan
1:100

P5	Window positions amended to suit introduction of roller shutters, following comments received from SYP.	31/10/23	BST
P4	Officials change amended to incorporate access WC.	30/10/23	BST
P3	Additional officials changing room added following feedback from Sport England. Cleaners store relocated. Areas updated.	30/10/23	BST
P2	Changing room layout and shower provision amended. Accessible WC added opposite changing rooms. Officials change added. All inline with comments from Sport England.	18/09/23	BST
P1	First Issue	08/08/23	BST
Rev	Notes	Date	Issued By



SERVICE		
B.E.S.T		
PROJECT		
Parkside Sports & Community Centre		
TITLE		
Proposed Plans		
PROJECT REF	DRAWING REFERENCE	REV
	P05	P5
SCALE	DISCIPLINE	SHEET SIZE
1:100	ARCHITECTURE	A1
PURPOSE OF ISSUE	PLANNING APPROVAL	Drawn Checked
		BST