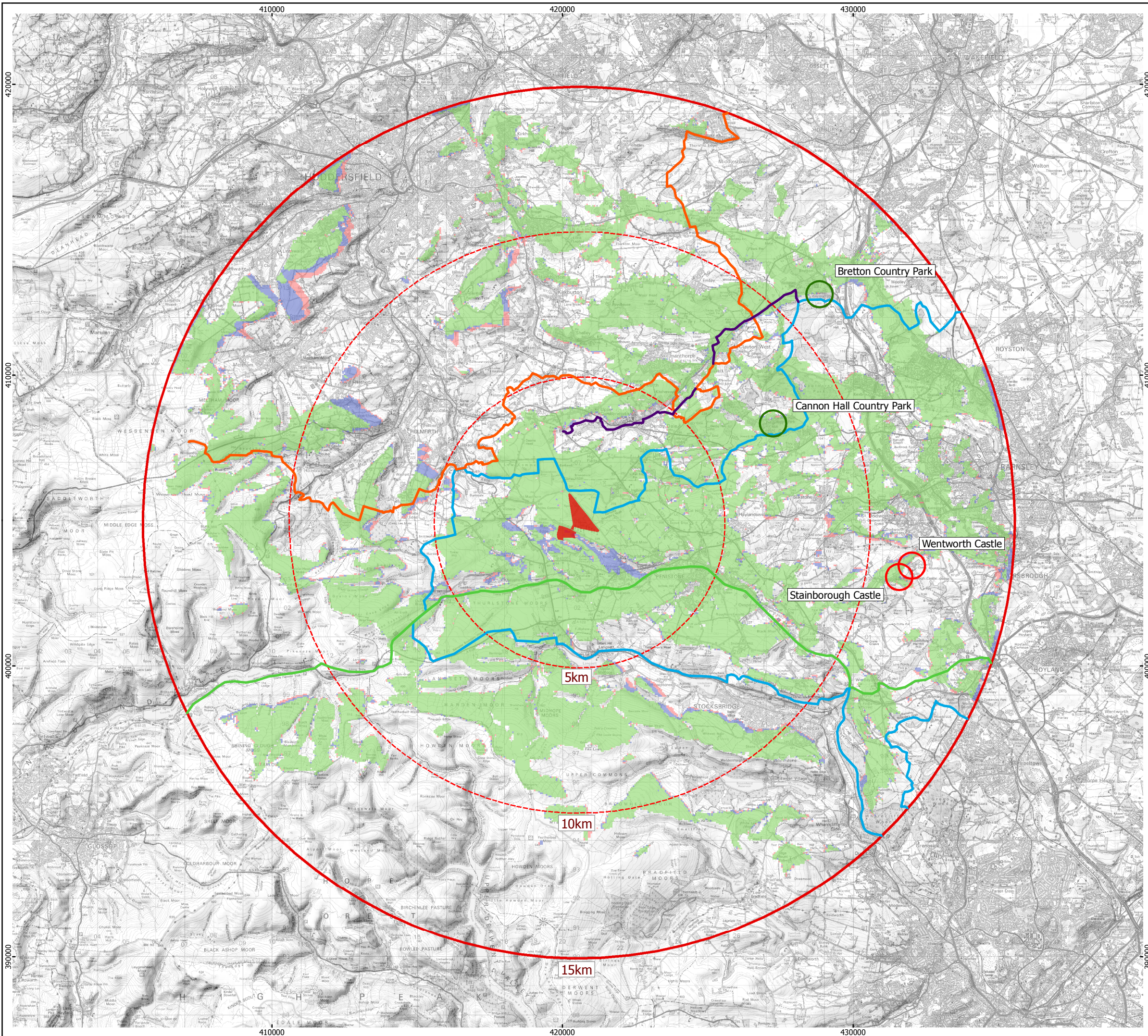


Reproduced from Ordnance Survey digital map data © Crown copyright 2009. All rights reserved. License number 100048606



J G PEARS LTD



Key

- Country Park
- Visitor Attraction

Public Pathways

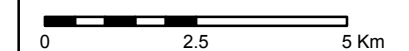
- Barnsley Boundary Walk
- Trans Pennine Trail
- Kirklees Way
- Dearne Way

Windfarm Study Area

Zone of Theoretical Visibility (95m)

- 1 Turbine Visible
- 2 Turbines Visible
- 3 Turbines Visible

1:125,000 Scale @ A3



Produced By: SC
Approved By: CS

Ref: 190/ES/041

Revision: A

Date: 03/03/2009

Rights of Way and Visitor Attractions with Blade Tip ZTV
Figure 5.18

Spicer Hill Wind Farm Environmental Statement