

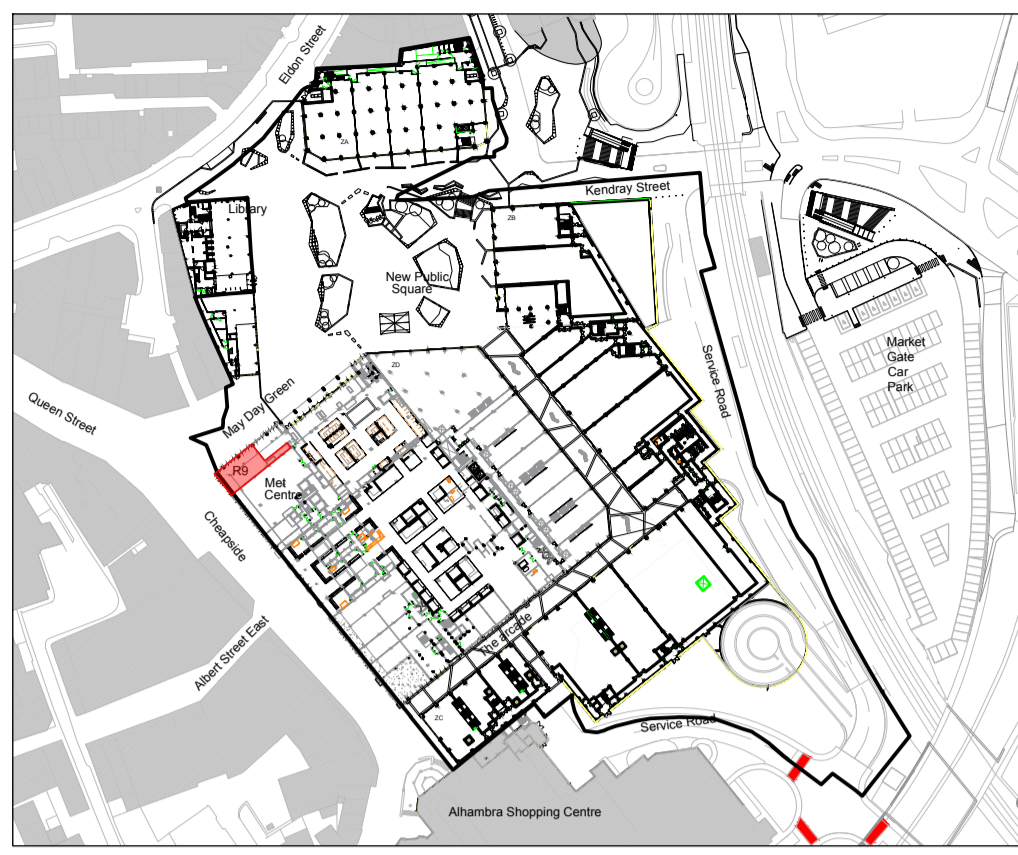
This drawing is to be read in conjunction with the bill of quantities / specification and any related drawings. Contractor must ensure that all items detailed on this drawing must be included when tendering even if not covered by the specification. Any discrepancies must be brought to the attention of the Designer, immediately in writing, prior to works commencing on site.

Any structural works must be carried out in accordance with the appointed structural engineer's details and calculations and all works must be inspected at the relevant stages by the structural engineer and building inspector. Any alterations must be approved by the engineer and building inspector. Any costs incurred due to either claims for damages, loss of trade, etc. by failing to do so will be the sole liability of the contractor.

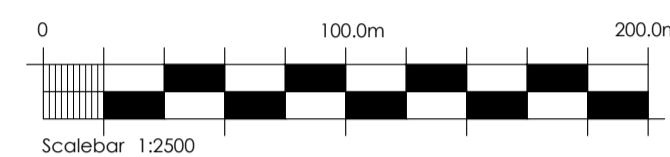
All works must be carried out in accordance with current local authority, British and European standards. If in doubt, it is the responsibility of the contractor to contact all relevant parties.

Under the guidance of CDM 2015, the designer will not commence any work in relation to a project unless completely satisfied that the client is aware of their duties duly owed and obligated to them under these regulations.

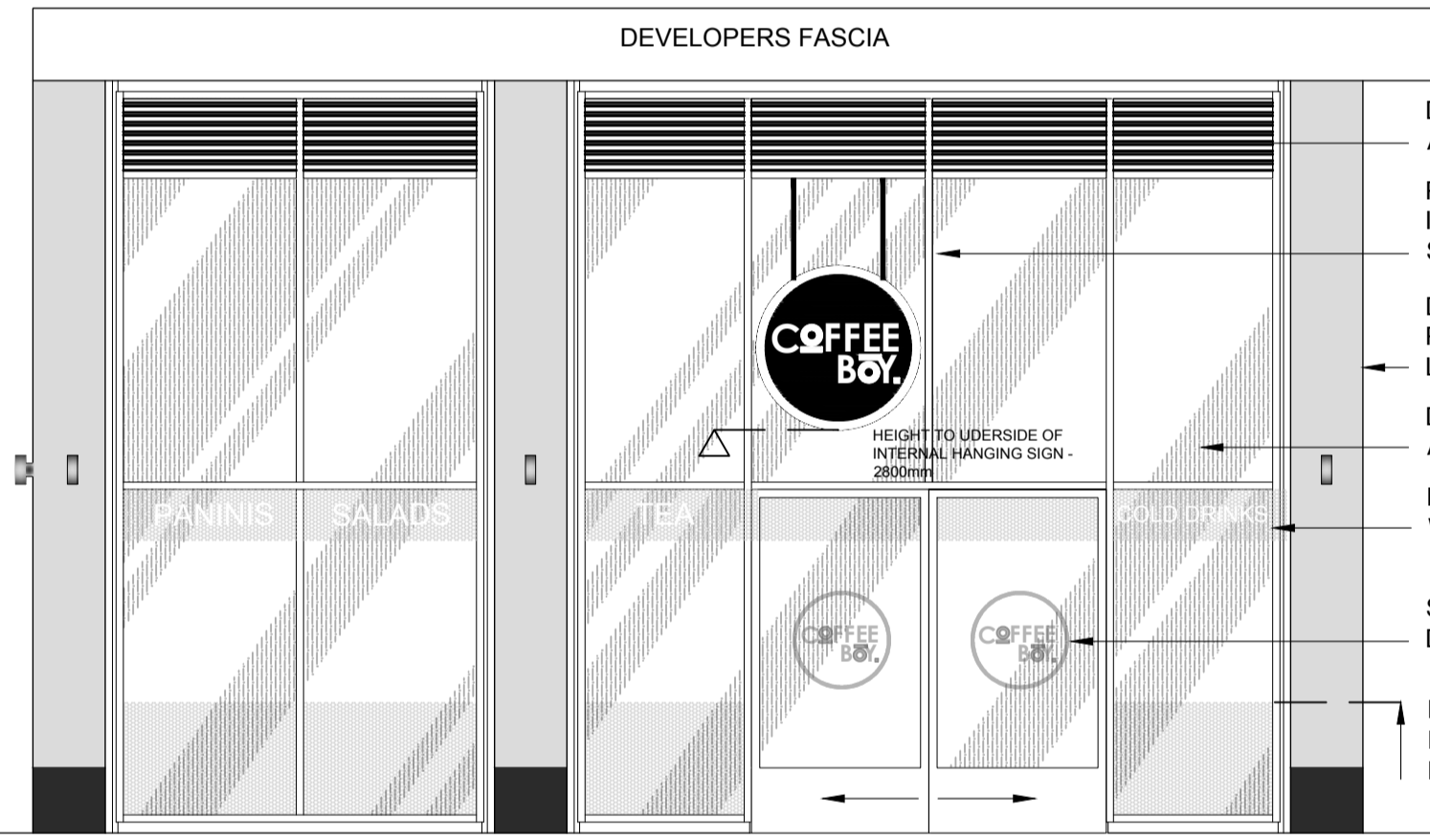
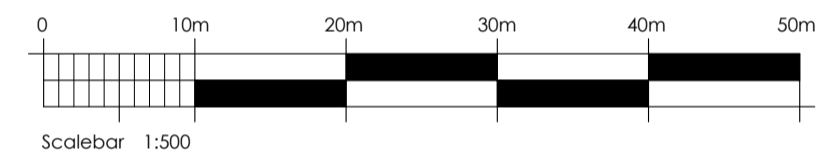
This drawing precludes octopus id, from the role of principal designer unless otherwise contractually engaged.



LOCATION PLAN - 1/2500



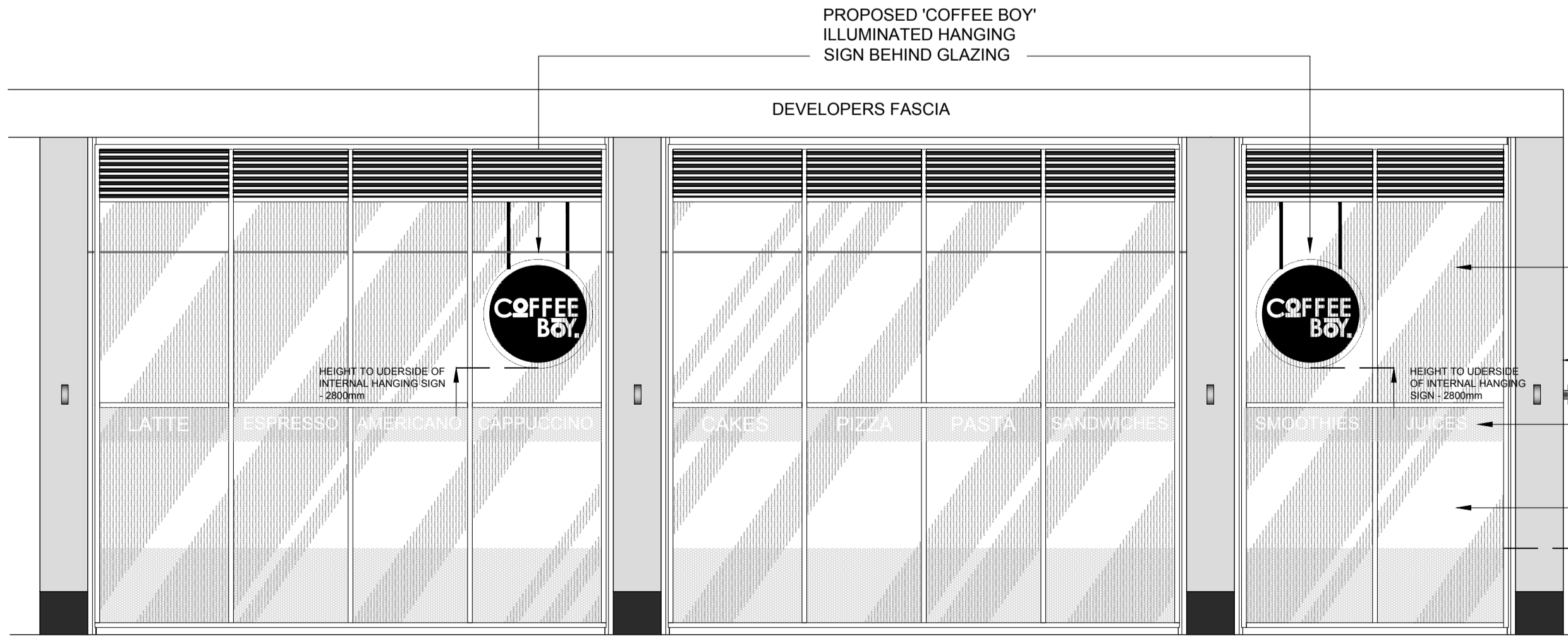
BLOCK PLAN - 1/500



- DEVELOPERS GRILLE FOR TENANTS AIR CON AND VENTILATION
- PROPOSED 'COFFEE BOY' ILLUMINATED HANGING SIGN BEHIND GLAZING
- DEVELOPERS SHOPFRONT PILASTERS AND UP/DOWN LIGHTS
- DEVELOPERS SHOPFRONT AND GLAZING
- NARROW BAND OF FROSTED VINYL WITH LETTERING CUT OUT
- SHOPFRONT ENTRANCE DOORS WITH FROSTED LOGO
- LIGHT FROSTED VINYL APPLIED TO INSIDE AT 900mm ABOVE fl. WITH DARKER FROSTED LOGO.

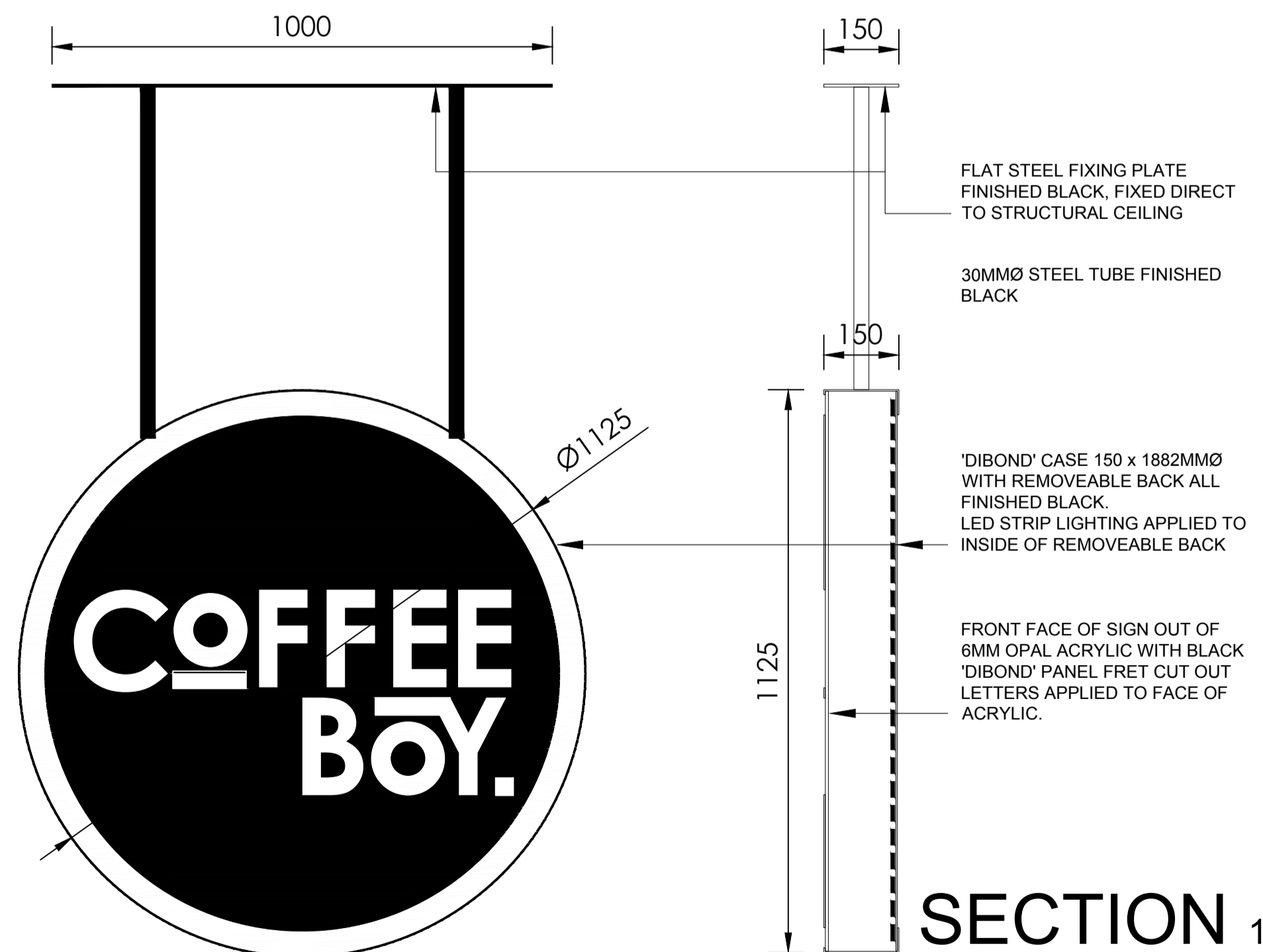


SHOPFRONT
CHEAPSIDE ELEVATION - 1/50



- DEVELOPERS SHOPFRONT AND GLAZING
- DEVELOPERS SHOPFRONT PILASTERS AND UP/DOWN LIGHTS
- NARROW BAND OF FROSTED VINYL WITH LETTERING CUT OUT
- DEVELOPERS SHOPFRONT AND GLAZING
- LIGHT FROSTED VINYL APPLIED TO INSIDE AT 900mm ABOVE fl. WITH DARKER FROSTED LOGO.

SHOPFRONT
MAY DAY GREEN ELEVATION - 1/50



SECTION 1/10

ILLUMINATED HANGING SIGN 1/10
POSITIONED TO HANG BEHIND GLASS WITH MIN GAP OF 300MM

B 04/10/19 AGH
Revisions and additions following clients meeting 04/10/19

A 17/09/19 AGH
Revisions and additions following site visit 16/09/19

rev. date, initials, comment.

one navigation court, calder park, wakefield, west yorkshire, w2 7bj
tel: 01924 249333 www.octopusid.co.uk

for TDNZ Coffee Ltd, Suite 52, Batley Business Park, WF17 6ER
project COFFEE BOY, Unit R9, The Glass Works, Barnsley

drawing name PROPOSED SHOPFRONT & SIGNAGE by AGH
date 11/09/19 scale @ A1 VARIES
drawing number 1070 / 10 revision B

This drawing is the copyright of octopus id. Copyright is reserved by them and the drawing is issued on condition that it is not copied, reproduced, retained or disclosed to any unauthorised persons, either wholly or in part without the written consent of octopus id. This drawing has been prepared for presentation purposes, consultants wishing to use the drawing for guidance must check all dimensions on site prior to finalising their element of work undertaken and any discrepancies must be brought to the attention of the Designer, immediately in writing.

© copyright