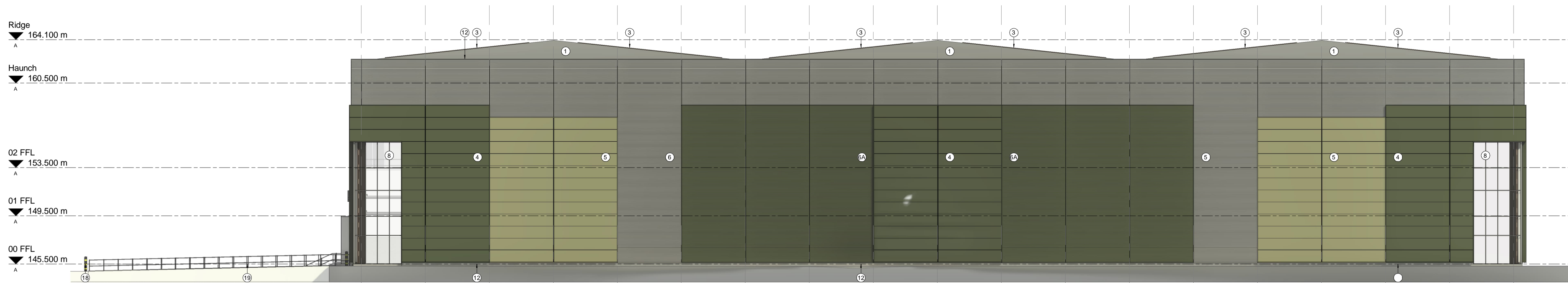
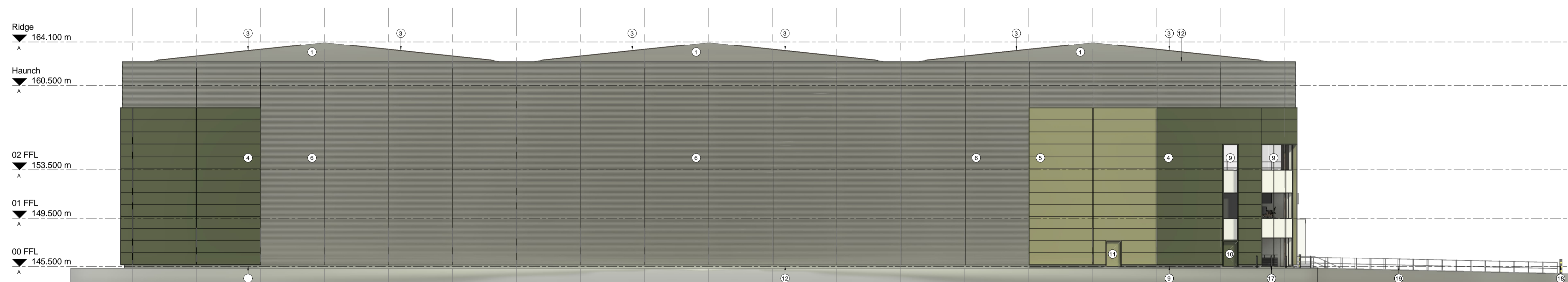


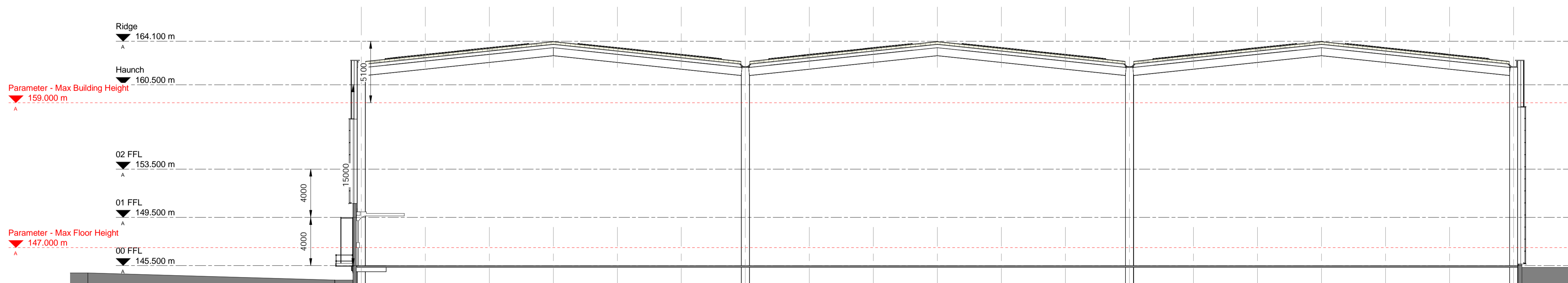
Rev	Date	Description	Drawn	CHK'd By
P01	23.10.24	Updated title with Comments	NBB	JMR
P02	08.11.24	Elevations updated to reflect LVIA NB discussions	NBB	JMR



Landscape Embankment Elevation (Soth West)
1 : 200



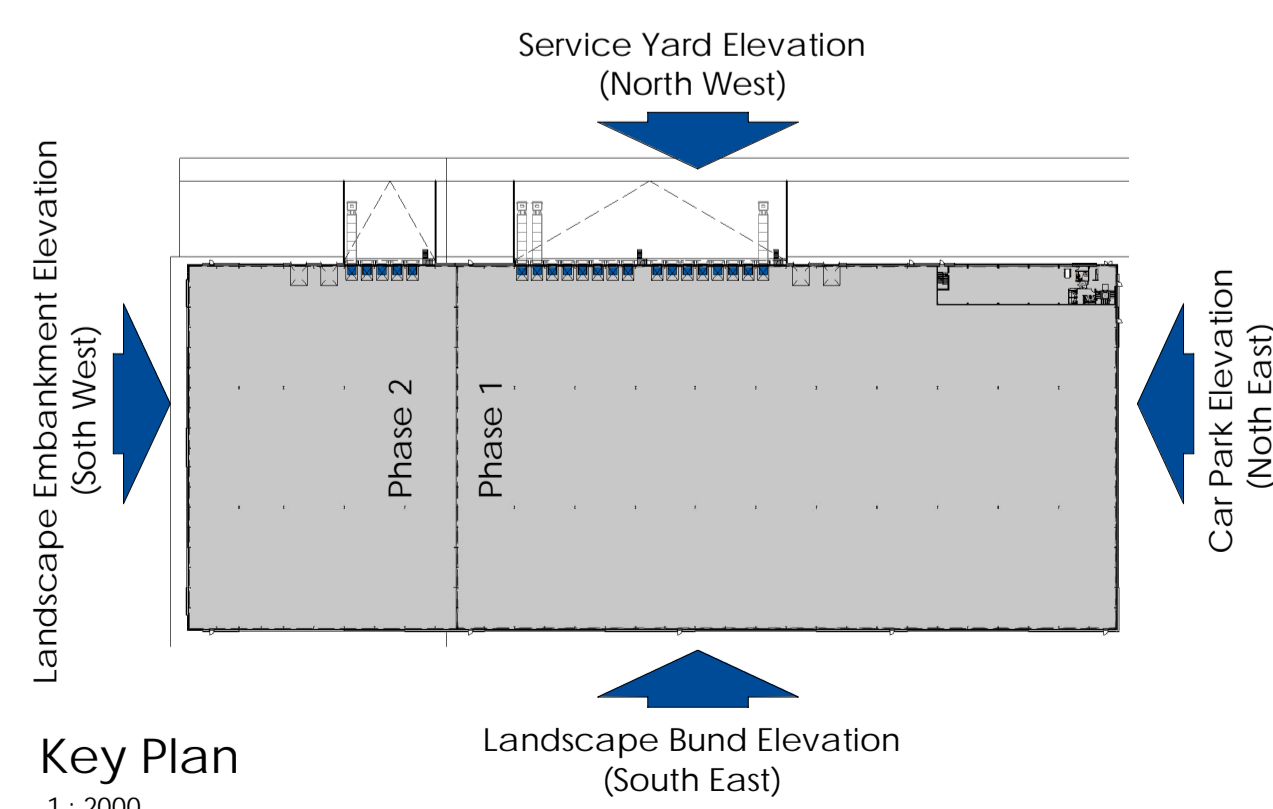
Car Park Elevation (Noth East)
1 : 200



Design Section
1 : 200

Planning External Materials Specification		
Ref	Specification	Colour
1	Profiled metal cladding.	Pure Grey PPC 000 55 00
2	'Mansafe' triple skin glass reinforced polyester (GRP) Roof lights 15% target maximum	
3	Photovoltaic Panels 12.5% target	
Note - Rainwater disposal shall be by means a syphonic drainage system of galvanised gutters with downpipe and discharge locations agreed. All gutters shall be insulated before assembly and have a factory applied protective finish to external surfaces.		
4	Composite Wall Panel, horizontally laid with preformed corners. Flashings to be pressed metal Plastisol HPS200 coated with preformed corners. Panel thickness to suit M&E U-Value calculations.	Olive Green RAL 100 30 20
5	Composite Wall Panel, horizontally laid with preformed corners. Flashings to be pressed metal Plastisol HPS200 coated with preformed corners. Panel thickness to suit M&E U-Value calculations.	Khaki Green RAL 100 60 20
6	Built up profiled metal cladding (laid horizontally). Flashings to be pressed metal Plastisol HPS200 coated with preformed corners.	Pure Grey PPC 000 55 00
6A	Built up profiled metal cladding (laid horizontally). Flashings to be pressed metal Plastisol HPS200 coated with preformed corners.	Olive Green RAL 100 30 20
7	Feature flat panel rainscreen metal cladding (laid horizontally)	4 no. Colours
	Colour 1	Olive Green RAL 100 30 20
	Colour 2	Sand Brown RAL 100 70 20
	Colour 3	Pale Beige RAL 100 80 10
	Colour 4	Traffic White
8	P.F.C. Aluminum thermally broken anti sun double-glazed doors & screens. Spandrel glazing panels shown hatched Opening windows to be provided where necessary.	Pure Grey PPC 000 55 00
8A	P.F.C. Aluminum thermally broken anti sun double-glazed Windows. Opening windows to be provided where necessary Spandrel glazing panels shown...	Pure Grey PPC 000 55 00
9	Smooth blue engineering plinth brickwork with pre-coloured black mortar PM96	
10	Fire exit doors to be High Security doors, vandal-resistant heavy duty steel door sets Plastisol HPS200 coated	Khaki Green RAL 100 60 20
11	Fire exit doors to be High Security doors, vandal-resistant heavy duty steel door sets Plastisol HPS200 coated	Olive Green RAL 100 30 20
12	Reinforced and insulated pre-cast concrete Plinth.	
13	Parapet flashing to be pressed metal Plastisol HPS200 coated with preformed corners.	Pure Grey PPC 000 55 00
14	Level access door to be plastisol-coated, insulated, sectional overhead shutters. Size = 4000 x 5000mm. Panel thickness to suit M&E U-Value calculations.	Khaki Green RAL 100 60 20
15	Dock leveller doors to be plastisol-coated, insulated, sectional overhead shutters, 2,050 x 4,000 mm. Panel thickness to suit M&E U-Value.	Khaki Green RAL 100 60 20
16	Dock Shelter	
17	Stainless steel bollards	
18	Heavy Duty Bollard	
19	Protective barrier / Handrail to loading dock.	
20	Reinforced and insulated pre-cast concrete dock wall.	
21	Indicative signage location (Subject to separate application) Allow for steelwork to support signage	
All materials above are subject to Planning Approval.		

0 2.5 5 12.5m
SCALE 1 : 250



Key Plan
1 : 2000

PHASE 2

Architecture
Masterplanning
Interior Design

THE HARRIS PARTNERSHIP

www.harrispartnership.com
Wakefield Manchester Milton Keynes Reading London Harrogate

Client
Harworth Estates Investments Limited
Harworth

Project Title
PROPOSED PLOT 7 DEVELOPMENT
Dearne Valley Parkway
Rockingham
Barnsley

Drawing Title
Unit 7 Elevations

Drawn	Checked	Scale	Rev	BM Status	Date
NBB	JMR	As indicated			07/24

Drawing Status	Rev	THP Project No
INFORMATION	P02	12006-5

Project No.	Originator	Volume	Level	Type	Role	Number
12006-5	-THP	-XX	-XX-	DR-	A-	10 27