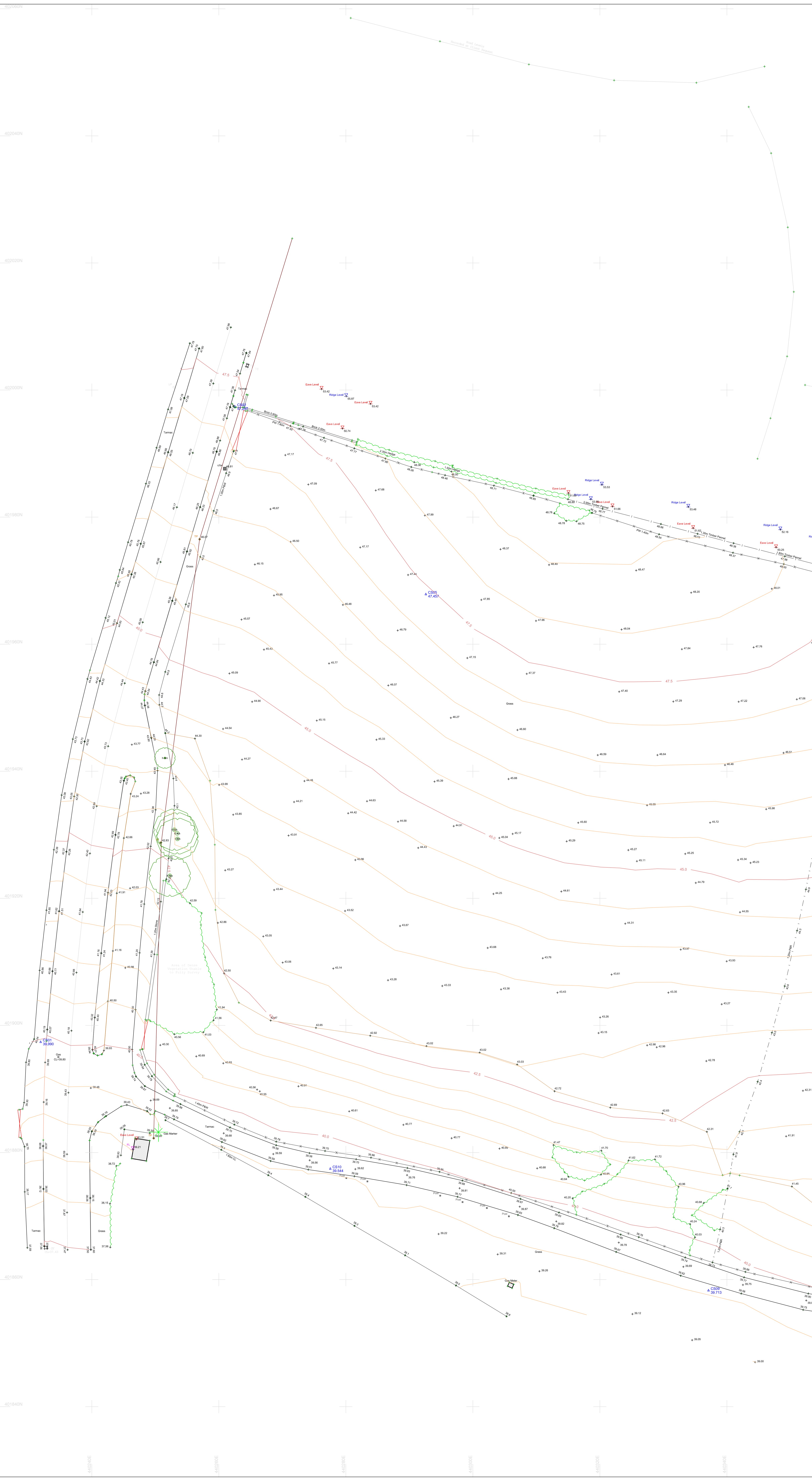
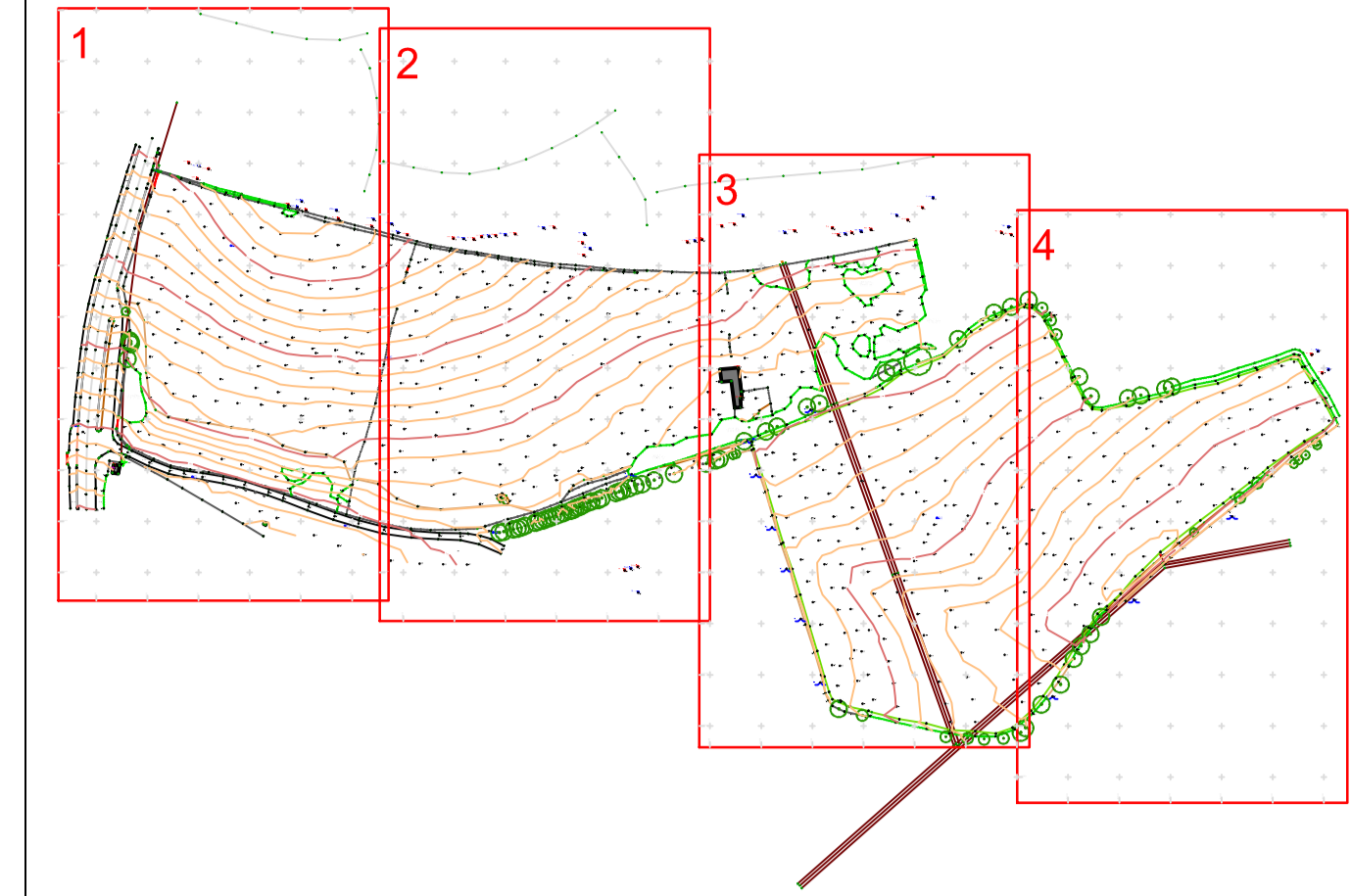


NOTES
 All survey data established using OSGB36
 All survey level information is relative to GPS Station CS1 at an elevation of 39.990m

SHEET LAYOUTS



LEGEND

	Depth below surface in metres		Empty Service Duct
	Air Line		Ground Penetrating Radar Detection
	BT Cable		Assumed Route of Service
	CCTV Cable		Assumed Route of Service (Records)
	Chamber Extends		Cable Riser (Colour denotes type)
	Comms Cable		Combined Water Drainage
	CTW Cable		Four Water Drainage
	Data Cable		Surface Water Drainage
	Earth Strip/Tape (With Spike)		Drainage with Backstop
	Electric Cable		Rising Man
	Fibre Optic Cable		Assumed Route of Drainage
	Fuel Line		Overhead Electric Wires
	Gas		Overhead Telecom Lines
	Heating Pipe		Banking Bottom
	HV Electric Cable		Banking Top
	Kingston Communications		Building
	Steel Lighting		Building Canopy
	Telecoms Cable		Ditch Bottom
	Traffic Control Cable		Edge of Trench/Troughing
	Unknown Trace		Fence
	Unknown Cable		Kerb Drop/Top
	Water		Survey Extends
	Band of Cables (Colour denotes type)		Topographic Lines
	Assumed Band of Cables (Colour denotes type)		Visible Trench

KEY

AV	Air Valve	FP	Flag Pole	SI	Sign Post (Illuminated)
BB	Belted Beacon	GP	Gate Post	SPR	Sign Post (Non-Illuminated)
BB	Backdrop	GV	Gas Valve	SPC	Speed Camera
BCY	Back Sight Gully	GV	Gully	ST	Street Light
BCY(L)	Back Sight Gully (Illuminated)	HC	Heating Cover	SVP	Street View Pole
BCY(R)	Back Sight Gully (Illuminated)	HDPE	High Density Polyethylene	SW	Swale
BS	Bullseye	IC	Inspection Cover (Initials indicate service)	SWP	Soil Vent Pipe
BS(Cab)	Cabinet (Initials indicate service)	IC	Inspection Cover (Initials indicate service)	TB	Trench Bottom
CC	Column	IC	Inspection Cover (Initials indicate service)	TDC	Traffic Density Camera
CC(L)	Column (Lamp)	IC	Inspection Cover (Initials indicate service)	TL	Traffic Light
CC(R)	Column (Right)	IC	Inspection Cover (Initials indicate service)	TLC	Traffic Light Control
CC(L)	Column (Left)	IC	Inspection Cover (Initials indicate service)	TL	Top of Form Level
CC(L)	Column (Left)	IC	Inspection Cover (Initials indicate service)	TMW	Top of Wall Level
CC(L)	Column (Left)	IC	Inspection Cover (Initials indicate service)	UD	Unreliable Depth Information
CC(L)	Column (Left)	IC	Inspection Cover (Initials indicate service)	UPVC	Unprotected Polyvinyl Chloride
CC(L)	Column (Left)	IC	Inspection Cover (Initials indicate service)	UR	Unreliable Reading
CC(L)	Column (Left)	IC	Inspection Cover (Initials indicate service)	VC	Verified City
CC(L)	Column (Left)	IC	Inspection Cover (Initials indicate service)	VF	Verified Foot
CC(L)	Column (Left)	IC	Inspection Cover (Initials indicate service)	WB	Waste Bin
CC(L)	Column (Left)	IC	Inspection Cover (Initials indicate service)	WB	Waste Bottom Level
CC(L)	Column (Left)	IC	Inspection Cover (Initials indicate service)	WD	Wash Out
CC(L)	Column (Left)	IC	Inspection Cover (Initials indicate service)	WF	Waste Foot Level
CC(L)	Column (Left)	IC	Inspection Cover (Initials indicate service)	WW	Water Valve
CC(L)	Column (Left)	IC	Inspection Cover (Initials indicate service)	WW	Water Valve

CAUTION LIVE SERVICES PRESENT - EXTREME CARE SHOULD BE TAKEN WHEN EXCAVATING

Centara Ltd, and their agents or partners, are not responsible for any situation, incident or loss resulting from actions or planning resulting from total reliance upon this drawing or accompanying information. The completeness of the underground network information cannot be wholly guaranteed and as such no guarantees or warranties are provided or implied. The location and/or identification of a service will not positively indicate whether it is live or dead. A service indicated from records that has not been located or identified on site does not necessarily imply that it does not exist or is dead, however, its presence should be anticipated. The results of Electro Magnetic and GPR detection techniques are not infallible and ground proofing for the actual position and depth of services should be established.

If this drawing and any associated drawings should be used in relation to works, we advise that the users of this information follow the principles detailed by the Health and Safety Executive guidance directive HSG 47, "Avoiding Danger from Underground Services". Further details of this directive are available at www.hse.gov.uk/

MANUFACTURERS STATED DEPTH POSITIONS

- Detected Using Electromagnetic Location Methods e.g. Any metallic pipe/cable. Accuracy ± 2.5% of depth reading.
- Detected Using Electromagnetic Location Methods eg. Using a Sonde to locate drainage pipework. Accuracy ± 2.5% of depth reading.
- Detected Using Ground Penetrating Radar e.g. A plastic pipe or service not to be located by other means. Accuracy depends on ground conditions.

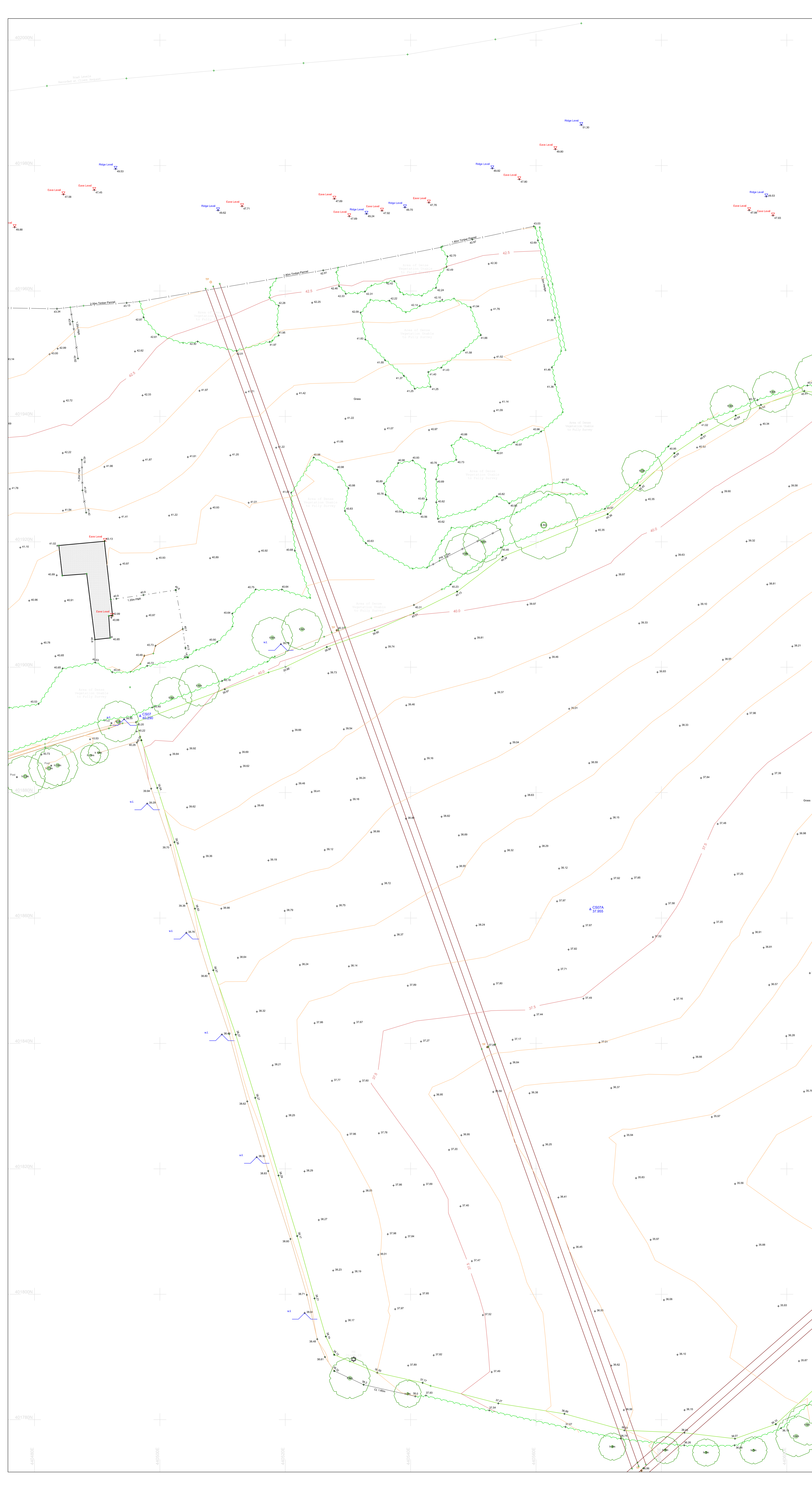
REVISIONS

Rev.	Date	Amendments

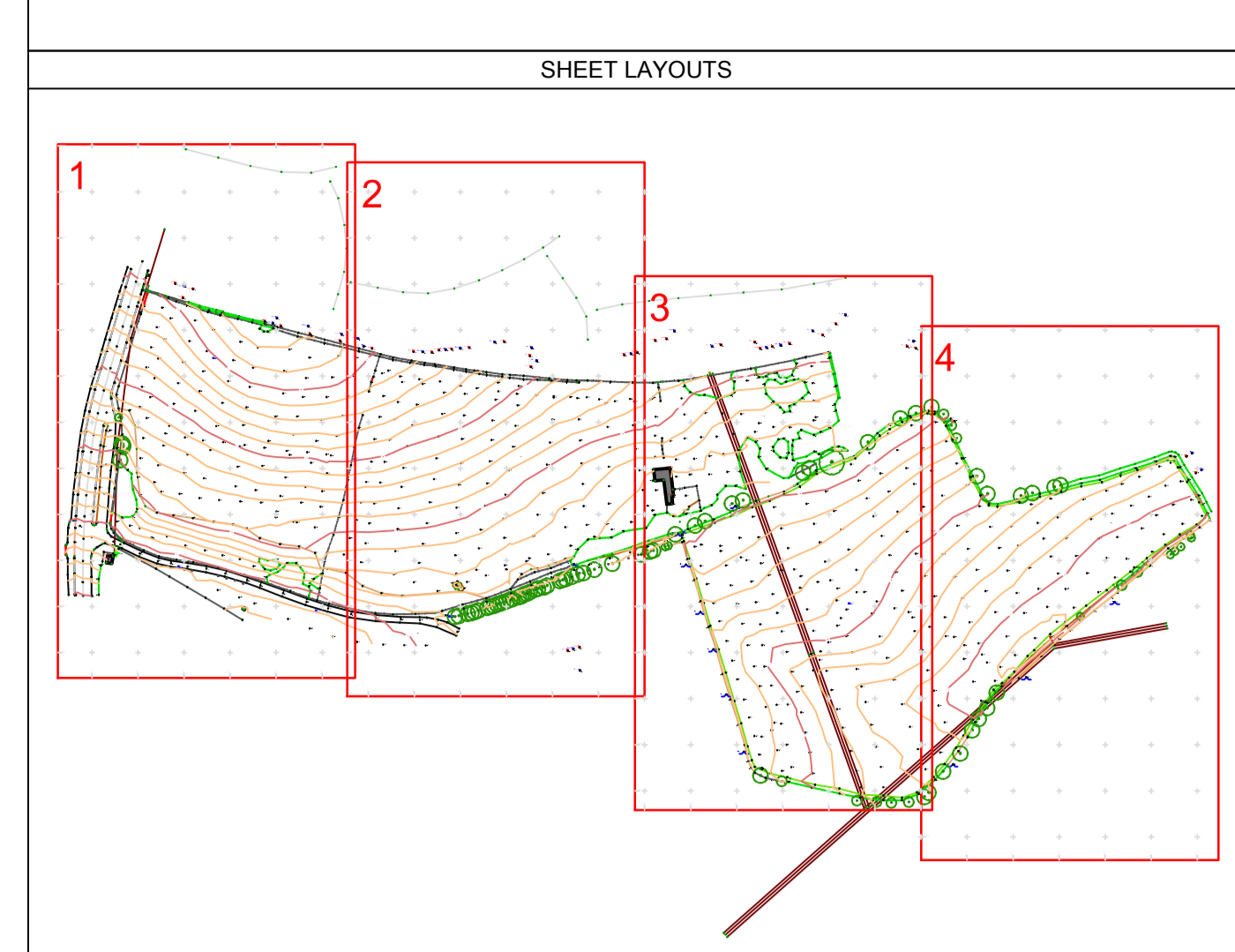
CLIENT		INITIALS	DATE
	SURVEYED	CS	03/2016
	DRAWN	CS	03/2016
	CHECKED	CS	03/2016
	AUTHORISED	KB	03/2016

SITE LOCATION	DRAWING TYPE
Lundhill Road Wombwell Barnsley	TOPOGRAPHICAL SURVEY

DRAWING NUMBER :	102474	SHEET 1 OF 4	SCALE 1:200	A0P
------------------	--------	--------------	-------------	-----



NOTES
 All survey data established using OSG836
 All survey level information is relative to GPS Station CS1 at an elevation of 39.990m

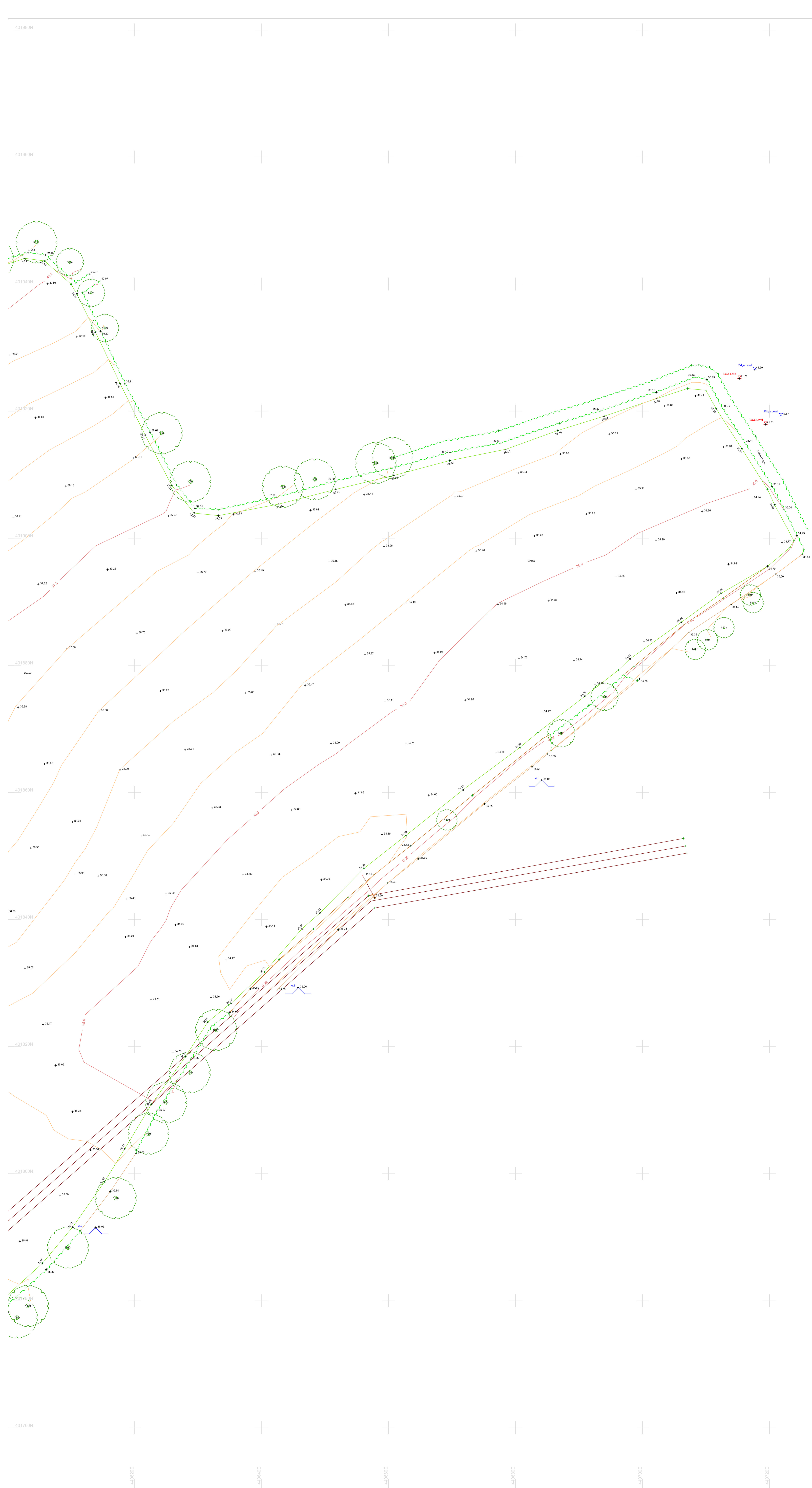


LEGEND

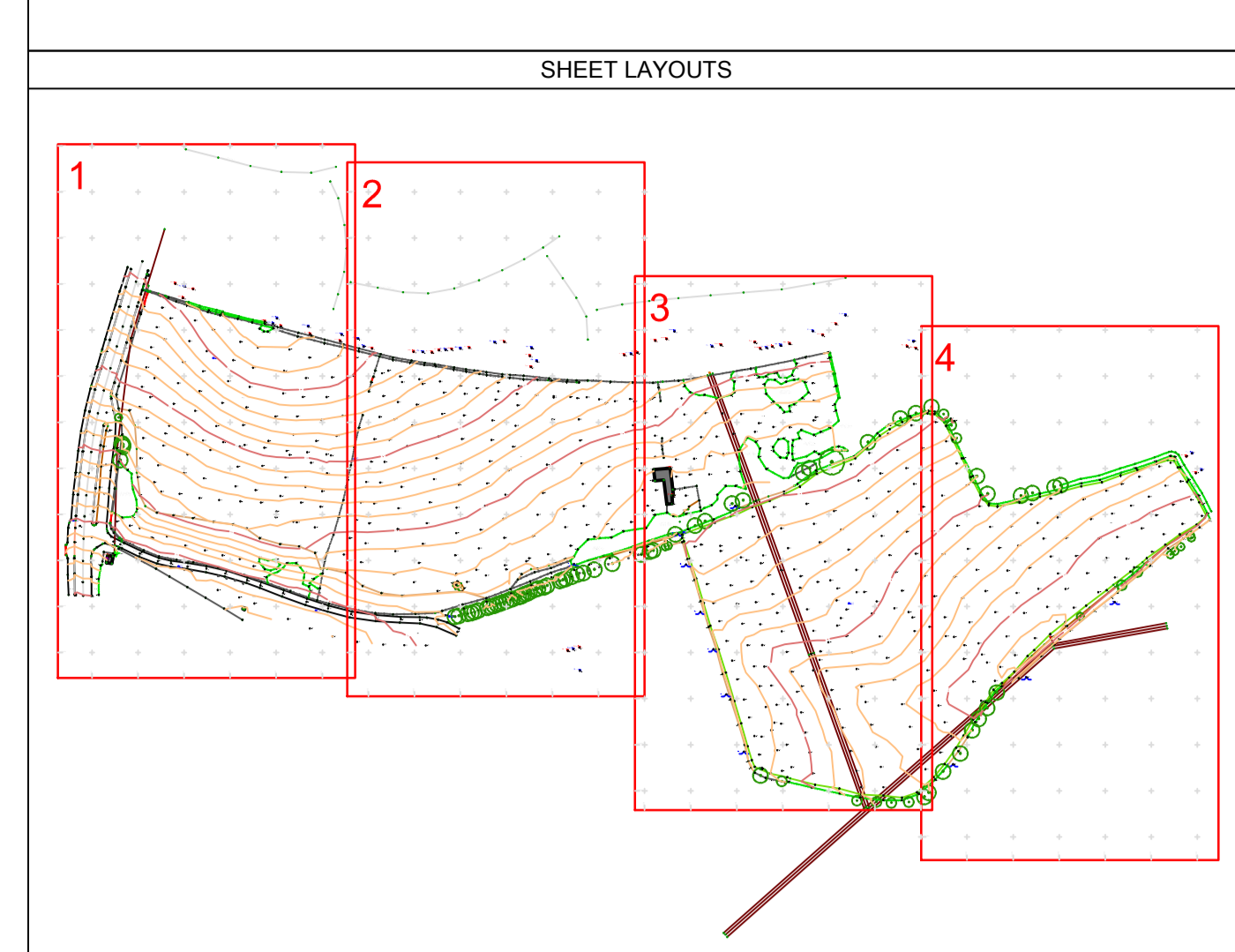
Ø 500mm	Depth below surface in metres	— ID —	Empty Service Duct
500mm	Diameter of Pipe	— GP —	Ground Penetrating Radar Detection
— AL —	Air Line	— AR —	Assumed Route of Service
— BT —	BT Cable	— AS —	Assumed Route of Service (Records)
— CT —	Cable	— CR —	Cable Riser (Colour denotes type)
— CE —	Chamber Extends	— CW —	Combined Water Drainage
— CM —	Comms Cable	— FD —	Four Water Drainage
— CV —	Cable TV	— SW —	Surface Water Drainage
— DC —	Data Cable	— WB —	Water with Backstop
— ES —	Earth Strip/Tape (With Spike)	— RM —	Rising Man
— EC —	Electric Cable	— AR —	Assumed Route of Drainage
— FO —	Fibre Optic Cable	— OE —	Overhead Electric Wires
— FL —	Fuel Line	— OT —	Overhead Telecom Lines
— G —	Gas	— BK —	Banking Bottom
— H —	Heating Pipe	— BK —	Banking Top
— HE —	HV Electric Cable	— B —	Building
— KC —	Kingston Communications	— BC —	Building Canopy
— K —	Street Lighting	— CB —	Chish Bottom
— TC —	Telecoms Cable	— DT —	Ditch Top
— UC —	Unknown Trace	— ET —	Edge of Trench/Troughing
— W —	Water	— EW —	Edge of Water
— B —	Band of Cables (Colour denotes type)	— K —	Kerb Drop/Top
— A —	Assumed Band of Cables (Colour denotes type)	— S —	Survey Extents
		— TL —	Topographic Lines
		— V —	Visible Trench

KEY

AV	Air Valve	FP	Flag Pole	SI	Spun Iron
BB	Backstop	GP	Gate Post	SPL	Spot Light (Illuminated)
BC	Back Sill	GV	Gas Valve	SRC	Street Camera
BD	Back Drain	GU	Gas Utility	ST	Street Light
BS	Ballast (Illuminated)	HC	Heating Cover	SVP	Soil Vent Pipe
BS(L)	Ballast (Illuminated)	HDPE	High Density Polyethylene	SVP	Soil Vent Pipe
BS(S)	Ballast (Illuminated)	BTIC	Bonded Thermal Insulation Cable	SB	Surface Box
BT	Bonded Thermal Insulation Cable	BTIC	Bonded Thermal Insulation Cable	SD	Street Density Camera
BT(L)	Bonded Thermal Insulation Cable	BTIC	Bonded Thermal Insulation Cable	TL	Traffic Light
BT(S)	Bonded Thermal Insulation Cable	BTIC	Bonded Thermal Insulation Cable	TLC	Traffic Light Control
BT(T)	Bonded Thermal Insulation Cable	BTIC	Bonded Thermal Insulation Cable	TL	Top of Fence Level
BT(B)	Bonded Thermal Insulation Cable	BTIC	Bonded Thermal Insulation Cable	TL	Top of Wall Level
BT(C)	Bonded Thermal Insulation Cable	BTIC	Bonded Thermal Insulation Cable	TL	Top of Trench Level
BT(D)	Bonded Thermal Insulation Cable	BTIC	Bonded Thermal Insulation Cable	TL	Top of Trench Level
BT(E)	Bonded Thermal Insulation Cable	BTIC	Bonded Thermal Insulation Cable	TL	Top of Trench Level
BT(F)	Bonded Thermal Insulation Cable	BTIC	Bonded Thermal Insulation Cable	TL	Top of Trench Level
BT(G)	Bonded Thermal Insulation Cable	BTIC	Bonded Thermal Insulation Cable	TL	Top of Trench Level
BT(H)	Bonded Thermal Insulation Cable	BTIC	Bonded Thermal Insulation Cable	TL	Top of Trench Level
BT(I)	Bonded Thermal Insulation Cable	BTIC	Bonded Thermal Insulation Cable	TL	Top of Trench Level
BT(J)	Bonded Thermal Insulation Cable	BTIC	Bonded Thermal Insulation Cable	TL	Top of Trench Level
BT(K)	Bonded Thermal Insulation Cable	BTIC	Bonded Thermal Insulation Cable	TL	Top of Trench Level
BT(L)	Bonded Thermal Insulation Cable	BTIC	Bonded Thermal Insulation Cable	TL	Top of Trench Level
BT(M)	Bonded Thermal Insulation Cable	BTIC	Bonded Thermal Insulation Cable	TL	Top of Trench Level
BT(N)	Bonded Thermal Insulation Cable	BTIC	Bonded Thermal Insulation Cable	TL	Top of Trench Level
BT(O)	Bonded Thermal Insulation Cable	BTIC	Bonded Thermal Insulation Cable	TL	Top of Trench Level
BT(P)	Bonded Thermal Insulation Cable	BTIC	Bonded Thermal Insulation Cable	TL	Top of Trench Level
BT(Q)	Bonded Thermal Insulation Cable	BTIC	Bonded Thermal Insulation Cable	TL	Top of Trench Level
BT(R)	Bonded Thermal Insulation Cable	BTIC	Bonded Thermal Insulation Cable	TL	Top of Trench Level
BT(S)	Bonded Thermal Insulation Cable	BTIC	Bonded Thermal Insulation Cable	TL	Top of Trench Level
BT(T)	Bonded Thermal Insulation Cable	BTIC	Bonded Thermal Insulation Cable	TL	Top of Trench Level
BT(U)	Bonded Thermal Insulation Cable	BTIC	Bonded Thermal Insulation Cable	TL	Top of Trench Level
BT(V)	Bonded Thermal Insulation Cable	BTIC	Bonded Thermal Insulation Cable	TL	Top of Trench Level
BT(W)	Bonded Thermal Insulation Cable	BTIC	Bonded Thermal Insulation Cable	TL	Top of Trench Level
BT(X)	Bonded Thermal Insulation Cable	BTIC	Bonded Thermal Insulation Cable	TL	Top of Trench Level
BT(Y)	Bonded Thermal Insulation Cable	BTIC	Bonded Thermal Insulation Cable	TL	Top of Trench Level
BT(Z)	Bonded Thermal Insulation Cable	BTIC	Bonded Thermal Insulation Cable	TL	Top of Trench Level
CA	Chamber	CH	Chamber	CH	Chamber
CB	Chamber	CH	Chamber	CH	Chamber
CC	Chamber	CH	Chamber	CH	Chamber
CD	Chamber	CH	Chamber	CH	Chamber
CE	Chamber	CH	Chamber	CH	Chamber
CF	Chamber	CH	Chamber	CH	Chamber
CG	Chamber	CH	Chamber	CH	Chamber
CH	Chamber	CH	Chamber	CH	Chamber
CI	Chamber	CH	Chamber	CH	Chamber
CJ	Chamber	CH	Chamber	CH	Chamber
CK	Chamber	CH	Chamber	CH	Chamber
CL	Chamber	CH	Chamber	CH	Chamber
CM	Chamber	CH	Chamber	CH	Chamber
CN	Chamber	CH	Chamber	CH	Chamber
CO	Chamber	CH	Chamber	CH	Chamber
CP	Chamber	CH	Chamber	CH	Chamber
CQ	Chamber	CH	Chamber	CH	Chamber
CR	Chamber	CH	Chamber	CH	Chamber
CS	Chamber	CH	Chamber	CH	Chamber
CT	Chamber	CH	Chamber	CH	Chamber
CU	Chamber	CH	Chamber	CH	Chamber
CV	Chamber	CH	Chamber	CH	Chamber
CW	Chamber	CH	Chamber	CH	Chamber
CX	Chamber	CH	Chamber	CH	Chamber
CY	Chamber	CH	Chamber	CH	Chamber
CZ	Chamber	CH	Chamber	CH	Chamber
DA	Chamber	CH	Chamber	CH	Chamber
DB	Chamber	CH	Chamber	CH	Chamber
DC	Chamber	CH	Chamber	CH	Chamber
DD	Chamber	CH	Chamber	CH	Chamber
DE	Chamber	CH	Chamber	CH	Chamber
DF	Chamber	CH	Chamber	CH	Chamber
DG	Chamber	CH	Chamber	CH	Chamber
DH	Chamber	CH	Chamber	CH	Chamber
DI	Chamber	CH	Chamber	CH	Chamber
DJ	Chamber	CH	Chamber	CH	Chamber
DK	Chamber	CH	Chamber	CH	Chamber
DL	Chamber	CH	Chamber	CH	Chamber
DM	Chamber	CH	Chamber	CH	Chamber
DN	Chamber	CH	Chamber	CH	Chamber
DO	Chamber	CH	Chamber	CH	Chamber
DP	Chamber	CH	Chamber	CH	Chamber
DQ	Chamber	CH	Chamber	CH	Chamber
DR	Chamber	CH	Chamber	CH	Chamber
DS	Chamber	CH	Chamber	CH	Chamber
DT	Chamber	CH	Chamber	CH	Chamber
DU	Chamber	CH	Chamber	CH	Chamber
DV	Chamber	CH	Chamber	CH	Chamber
DW	Chamber	CH	Chamber	CH	Chamber
DX	Chamber	CH	Chamber	CH	Chamber
DY	Chamber	CH	Chamber	CH	Chamber
DZ	Chamber	CH	Chamber	CH	Chamber
EA	Chamber	CH	Chamber	CH	Chamber
EB	Chamber	CH	Chamber	CH	Chamber
EC	Chamber	CH	Chamber	CH	Chamber
ED	Chamber	CH	Chamber	CH	Chamber
EE	Chamber	CH	Chamber	CH	Chamber
EF	Chamber	CH	Chamber	CH	Chamber
EG	Chamber	CH	Chamber	CH	Chamber
EH	Chamber	CH	Chamber	CH	Chamber
EI	Chamber	CH	Chamber	CH	Chamber
EJ	Chamber	CH	Chamber	CH	Chamber
EK	Chamber	CH	Chamber	CH	Chamber
EL	Chamber	CH	Chamber	CH	Chamber
EM	Chamber	CH	Chamber	CH	Chamber
EN	Chamber	CH	Chamber	CH	Chamber
EO	Chamber	CH	Chamber	CH	Chamber
EP	Chamber	CH	Chamber	CH	Chamber
EQ	Chamber	CH	Chamber	CH	Chamber
ER	Chamber	CH	Chamber	CH	Chamber
ES	Chamber	CH	Chamber	CH	Chamber
ET	Chamber	CH	Chamber	CH	Chamber
EU	Chamber	CH	Chamber	CH	Chamber
EV	Chamber	CH	Chamber	CH	Chamber
EW	Chamber	CH	Chamber	CH	Chamber
EX	Chamber	CH	Chamber	CH	Chamber
EY	Chamber	CH	Chamber	CH	Chamber
EZ	Chamber	CH	Chamber	CH	Chamber
FA	Chamber	CH	Chamber	CH	Chamber
FB	Chamber	CH	Chamber	CH	Chamber
FC	Chamber	CH	Chamber	CH	Chamber
FD	Chamber	CH	Chamber	CH	Chamber
FE	Chamber	CH	Chamber	CH	Chamber
FF	Chamber	CH	Chamber	CH	Chamber
FG	Chamber	CH	Chamber	CH	Chamber
FH	Chamber	CH	Chamber	CH	Chamber
FI	Chamber	CH	Chamber	CH	Chamber
FJ	Chamber	CH	Chamber	CH	Chamber
FK	Chamber	CH	Chamber	CH	Chamber
FL	Chamber	CH	Chamber	CH	Chamber
FM	Chamber	CH	Chamber	CH	Chamber
FN	Chamber	CH	Chamber	CH	Chamber
FO	Chamber	CH	Chamber	CH	Chamber
FP	Chamber	CH	Chamber	CH	Chamber
FQ	Chamber	CH	Chamber	CH	Chamber
FR	Chamber	CH	Chamber	CH	Chamber
FS	Chamber	CH	Chamber	CH	Chamber
FT	Chamber	CH	Chamber	CH	Chamber
FU	Chamber	CH	Chamber	CH	Chamber
FV	Chamber	CH	Chamber	CH	Chamber
FW	Chamber	CH	Chamber	CH	Chamber
FX	Chamber	CH	Chamber	CH	Chamber
FY	Chamber	CH	Chamber	CH	Chamber
FZ	Chamber	CH	Chamber	CH	Chamber
GA	Chamber	CH	Chamber	CH	Chamber
GB	Chamber	CH	Chamber	CH	Chamber
GC	Chamber	CH	Chamber	CH	Chamber
GD	Chamber	CH	Chamber	CH	Chamber
GE	Chamber	CH	Chamber	CH	Chamber
GF	Chamber	CH	Chamber	CH	Chamber
GG	Chamber	CH	Chamber	CH	Chamber
GH	Chamber	CH	Chamber	CH	Chamber
GI	Chamber	CH	Chamber	CH	Chamber
GJ	Chamber	CH	Chamber	CH	Chamber
GK	Chamber	CH	Chamber	CH	Chamber
GL	Chamber	CH	Chamber	CH	Chamber
GM	Chamber	CH	Chamber	CH	Chamber
GN	Chamber	CH	Chamber	CH	Chamber
GO	Chamber	CH	Chamber	CH	Chamber
GP	Chamber	CH	Chamber	CH	Chamber
GQ	Chamber	CH	Chamber	CH	Chamber
GR	Chamber	CH	Chamber	CH	Chamber
GS	Chamber	CH	Chamber	CH	Chamber
GT	Chamber	CH	Chamber	CH	Chamber
GU	Chamber	CH	Chamber	CH	Chamber
GV	Chamber	CH	Chamber	CH	Chamber
GW	Chamber	CH	Chamber	CH	Chamber
GX	Chamber	CH	Chamber	CH	Chamber
GY	Chamber	CH	Chamber	CH	Chamber
GZ	Chamber	CH	Chamber	CH	Chamber
HA	Chamber	CH	Chamber	CH	Chamber
HB	Chamber	CH	Chamber	CH	Chamber
HC	Chamber	CH	Chamber	CH	Chamber
HD	Chamber	CH	Chamber	CH	Chamber
HE	Chamber	CH	Chamber	CH	Chamber
HF	Chamber	CH	Chamber	CH	Chamber
HG	Chamber	CH	Chamber	CH	Chamber
HH	Chamber	CH	Chamber	CH	Chamber
HI	Chamber	CH	Chamber	CH	Chamber
HJ	Chamber	CH	Chamber	CH	Chamber
HK	Chamber	CH	Chamber	CH	Chamber
HL	Chamber	CH	Chamber	CH	Chamber
HM	Chamber	CH	Chamber	CH	Chamber
HN	Chamber	CH	Chamber	CH	Chamber
HO	Chamber	CH	Chamber	CH	Chamber
HP	Chamber	CH	Chamber	CH	Chamber
HQ	Chamber	CH	Chamber	CH	Chamber
HR	Chamber	CH	Chamber	CH	Chamber
HS	Chamber	CH	Chamber	CH	Chamber
HT	Chamber	CH	Chamber	CH	Chamber
HU	Chamber	CH	Chamber	CH	Chamber
HV	Chamber	CH	Chamber	CH	Chamber
HW	Chamber	CH	Chamber	CH	Chamber
HX	Chamber	CH	Chamber	CH	Chamber
HY	Chamber	CH	Chamber	CH	Chamber
HZ	Chamber	CH	Chamber	CH	Chamber
IA	Chamber	CH	Chamber	CH	Chamber
IB	Chamber	CH	Chamber	CH	Chamber
IC	Chamber	CH	Chamber	CH	Chamber
ID	Chamber	CH	Chamber	CH	Chamber
IE	Chamber	CH	Chamber	CH	Chamber
IF	Chamber	CH	Chamber	CH	Chamber
IG	Chamber	CH	Chamber	CH	Chamber
IH	Chamber	CH	Chamber	CH	Chamber
II	Chamber	CH	Chamber	CH	Chamber
IJ	Chamber	CH	Chamber	CH	Chamber
IK	Chamber	CH	Chamber	CH	Chamber



NOTES
 All survey data established using OSG836
 All survey level information is relative to GPS Station CS1 at an elevation of 39.990m



LEGEND

0.50V	Depth below surface in metres	ED	Empty Service Duct
500mm	Diameter of Pipe	GR	Ground Penetrating Radar Detection
—	Air Line	AS	Assumed Route of Service
—	BT Cable	AS	Assumed Route of Service (Records)
—	CCTV Cable	AS	Assumed Route of Service (Records)
—	Chamber Extants	AS	Cable Riser (Colour denotes type)
—	Comms Cable	AS	Combined Water Drainage
—	CIV Cable	AS	Four Water Drainage
—	Data Cable	AS	Surface Water Drainage
—	Earth Strip/Tape (With Spike)	AS	Drainage with Backdrop
—	Electric Cable	AS	Rising Man
—	Fibre Optic Cable	AS	Assumed Route of Drainage
—	Fuel Line	AS	Overhead Electric Lines
—	Gas	AS	Overhead Telecom Lines
—	Heating Pipe	AS	Banking Bottom
—	HV Electric Cable	AS	Banking Top
—	Kingston Communications	AS	Building
—	Street Lighting	AS	Building Canopy
—	Telecoms Cable	AS	Dish Bottom
—	Traffic Control Cable	AS	Ditch Top
—	Unknown Trace	AS	Edge of Trench/Troughing
—	Unknown Cable	AS	Edge of Water
—	Water	AS	Kerb Drop/Top
—	Band of Cables (Colour denotes type)	AS	Survey Extants
—	Assumed Band of Cables (Colour denotes type)	AS	Topographic Lines
—		AS	Visible Trench

KEY

AV	Air Valve	FP	Flag Pole	SI	Spun Iron
BB	Belted Beacon	GP	Gate Post	SP(L)	Sign Post (Illuminated)
BB	Backdrop	GV	Gas Valve	SP(Cam)	Speed Camera
BCV	Back View Gully	GV	Gas Valve	ST	Street Top
BS	Burial	HC	Heating Cover	SV	Subsidence Valve
BS(L)	Burial (Illuminated)	HDPE	High Density Polyethylene	SVP	Soil Vent Pipe
BS(S)	Burial	IC	Inspection Cover (Initials indicate service)	TB	Traffic Beacon
CB	Cabinet (Initials indicate service)	IC	Inspection Cover (Initials indicate service)	TDCam	Traffic Density Camera
CL	Cover Level	IC	Inspection Cover (Initials indicate service)	TL	Traffic Light
COL	Column	LH	Lamp Hole	TLC	Traffic Light Control
Cone	Concrete	LOS	Loss of Signal	TOL	Top of Form Level
CP	Cathodic Protection Point	MC	Mobile Density Polyethylene	TOW	Top of Wall Level
CU	Disconnected Utility	MH	Manhole	TP	Telecoms Pole
DC	Drainage Channel	Mkr	Marker	UC	Unknown Cover
DFB	Deep Foot Bin	MW	Monitoring Well	UCI	Unreliable Depth Information
DI	Ductile Iron	MR	Marker	UPVC	Unprotected Polyvinyl Chloride
DIB	Depth of Bottom	MR	Marker	UTL	Unreliable Depth Information
DIC	Depth of Cover	PE	Polyethylene	VC	Vertical Clay
DI	Down Pipe	PF	Prestressing	WB	Waste Bin
DT	Door Top Level	PG	Prestressing Guard Rail	WB	Waste Bottom Level
ED	Empty Duct	PM	Pressure Meter	WB	Waste Bottom Level
EP	Electric Pole	PI	Pipe	WD	Wash Out
EA	Earth Rod	PZ	Piezometer	WE	Waste Top Level
FFL	Finished Floor Level	RS(L)	Road Sign (Illuminated)	WV	Water Valve
FH	Fire Hydrant	RWP	Rain Water Pipe		

CAUTION LIVE SERVICES PRESENT - EXTREME CARE SHOULD BE TAKEN WHEN EXCAVATING

Centara Ltd, and their agents or partners, are not responsible for any situation, incident or loss resulting from actions or planning resulting from total reliance upon this drawing or accompanying information. The completeness of the underground network information cannot be wholly guaranteed and as such no guarantees or warranties are provided or implied. The location and/or identification of a service will not positively indicate whether it is live or dead. A service indicated from records that has not been located or identified on site does not necessarily imply that it does not exist or is dead, however, its presence should be anticipated. The results of Electro Magnetic and GPR detection techniques are not infallible and ground proofing for the actual position and depth of services should be established.

If this drawing and any associated drawings should be used in relation to works, we advise that the users of this information follow the principles detailed by the Health and Safety Executive guidance directive HSG 47, "Avoiding Danger from Underground Services". Further details of this directive are available at www.hse.gov.uk

MANUFACTURERS STATED DEPTH POSITIONS

●	Detected Using Electromagnetic Location Methods e.g. Any metallic pipe/cable. Accuracy ± 2.5% of depth reading.
○	Detected Using Electromagnetic Location Methods eg. Using a Sonde to locate drainage pipework. Accuracy ± 2.5% of depth reading.
○	Detected Using Ground Penetrating Radar e.g. A plastic pipe or service not to be located by other means. Accuracy depends on ground conditions.

REVISIONS

Rev.	Date.	Amendments.

CLIENT

	INITIALS	DATE
SURVEYED	CS	03/2016
DRAWN	CS	03/2016
CHECKED	CS	03/2016
AUTHORISED	KB	03/2016

SITE LOCATION

Lundhill Road
Wombwell
Barnsley

DRAWING TYPE

TOPOGRAPHICAL SURVEY

DRAWING NUMBER : 102474 **SHEET 4 OF 4** **SCALE** 1:200 **ADP**

OFFICE 10
NORMANTON BUSINESS
PARK
RIPLEY DRIVE
NORMANTON
WF6 1QT
01924 220720
info@centara-its.com