



The traditional sliding single glazed Georgian timber windows are all rotten and require complete replacement. It is proposed that they are replaced with Side opening timber windows with one recessed panel to closely resemble the original windows.



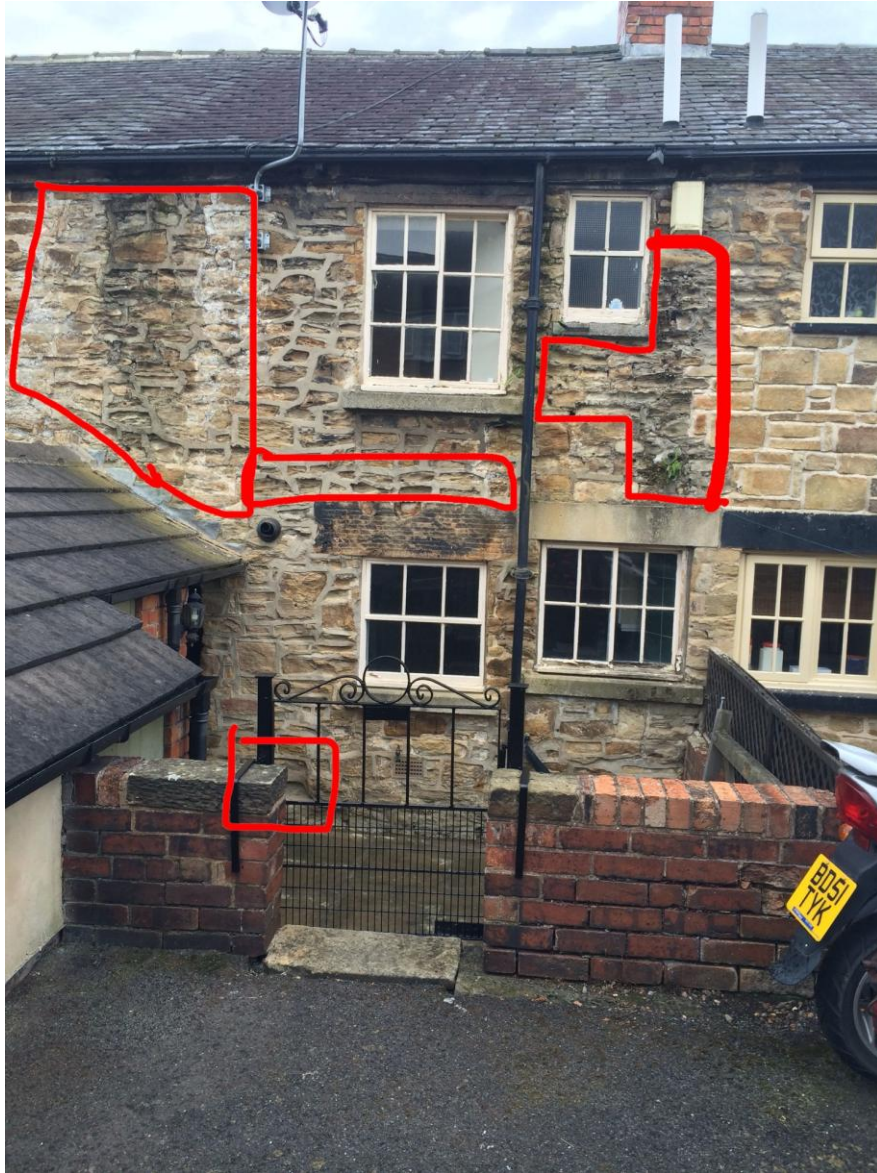
The front solid timber ledged and braced door is badly rotten and requires complete replacement. It is proposed that this is replaced with an exact like for like door.



Some of the stone work is in need of replacement particularly around the rain water pipes. The pointing is also of cement mixture which does not compliment the softness of the stone and has contributed to the weather damage to the stone. It is intended that the existing pointing is removed and replaced with a NHL 3.5 Lime mortar mix.



Some of the stone work is in need of replacement. The pointing is also of cement mixture which does not compliment the softness of the stone and has contributed to the weather damage to the stone. It is intended that the existing pointing is removed and replaced with a NHL 3.5 Lime mortar mix.



Areas of worst affected stone to the rear of property. The areas will be assessed once the original pointing has been removed and where necessary the stone will be replaced with local stone to match.



Areas of worst affected stone to the front of property. The areas will be assessed once the original pointing has been removed and where necessary the stone will be replaced with local stone to match.





Sample area of proposed pointing using a mix of cement: lime (NHL 3.5): sand: mix of parts 1:2:9 with sand comprising 3 parts soft to 3 parts sharp grit sand.