



FIG.1

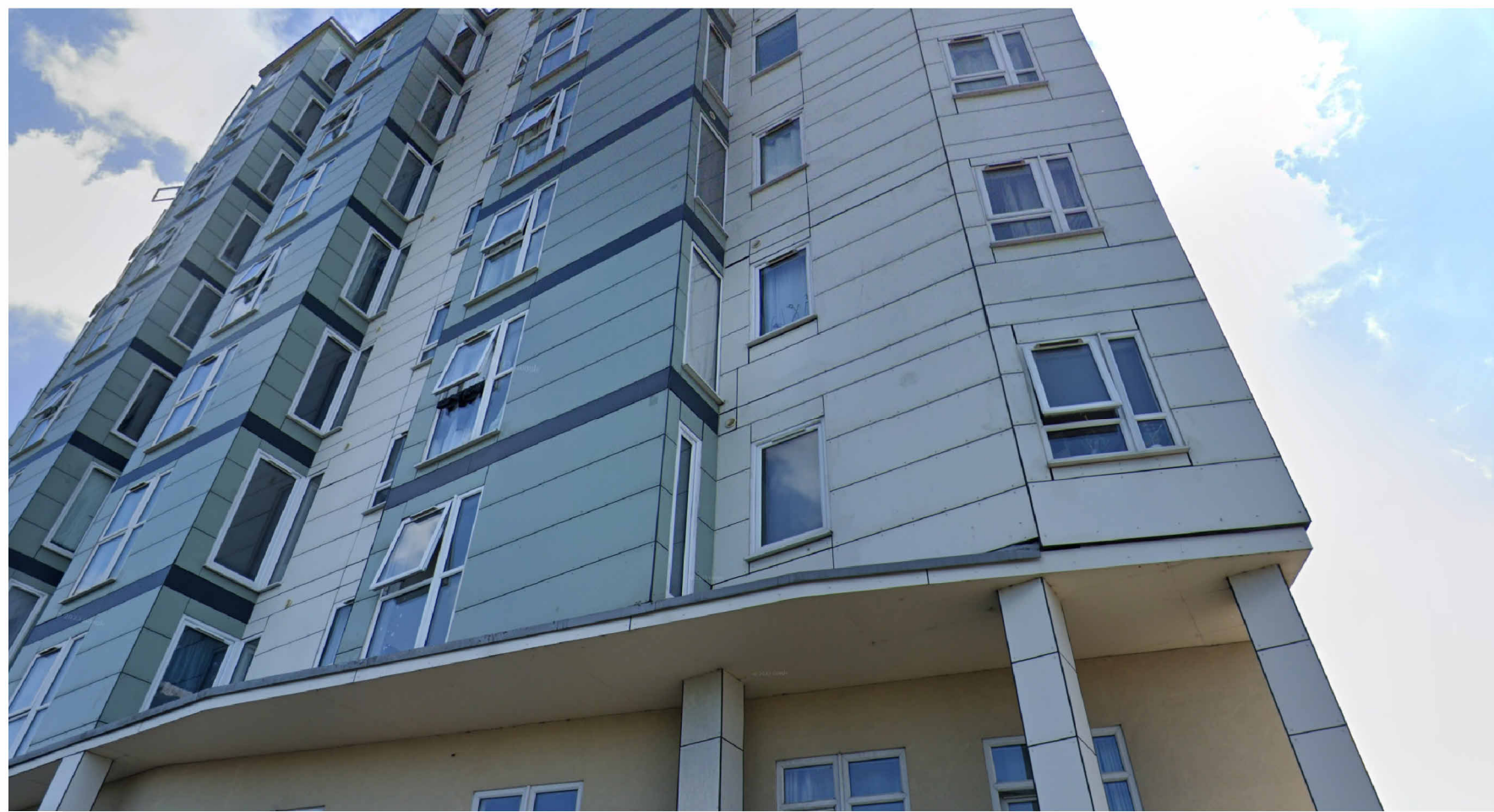


FIG.5



FIG.9



FIG.2

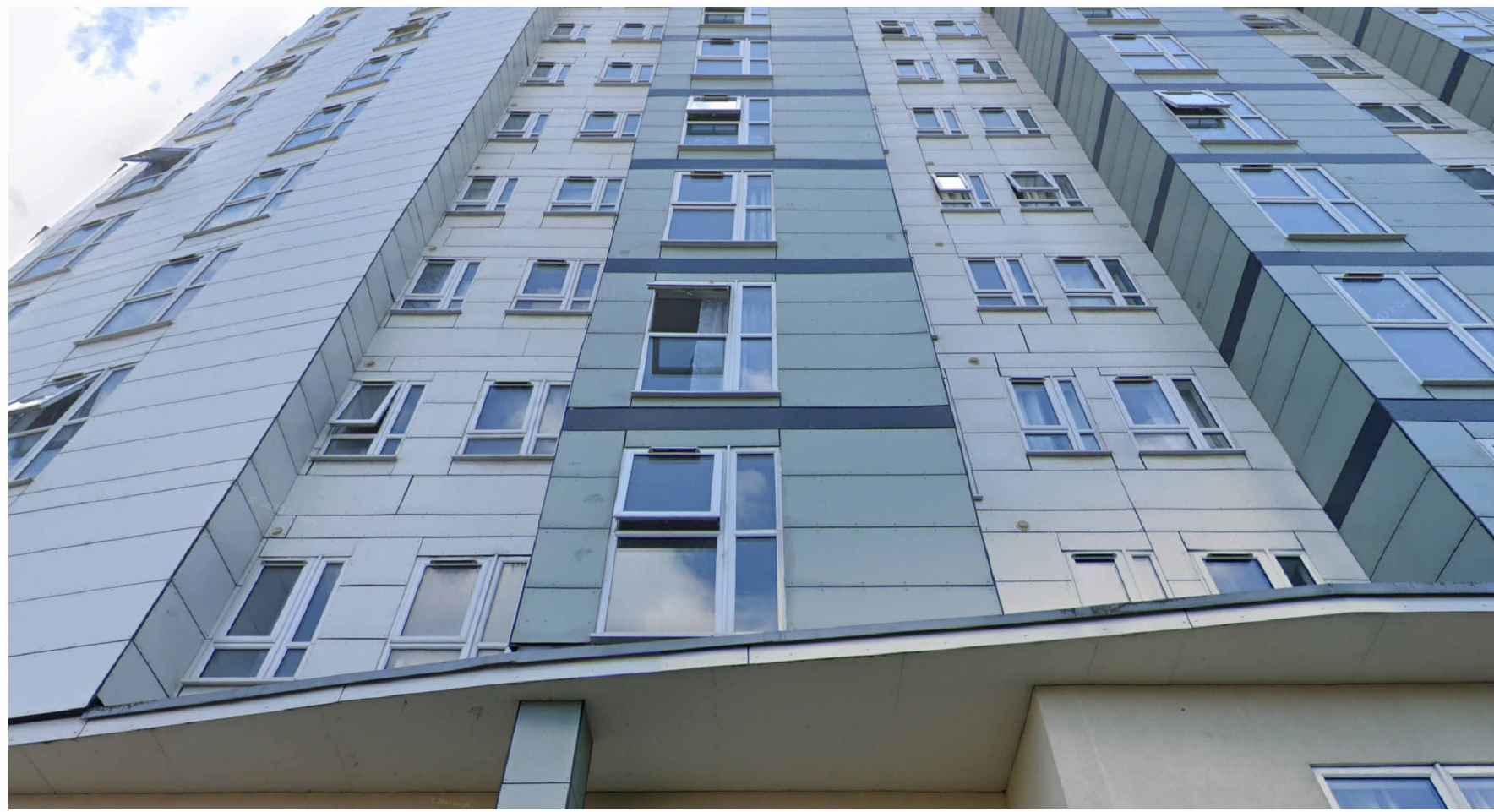


FIG.6



FIG.10



FIG.3

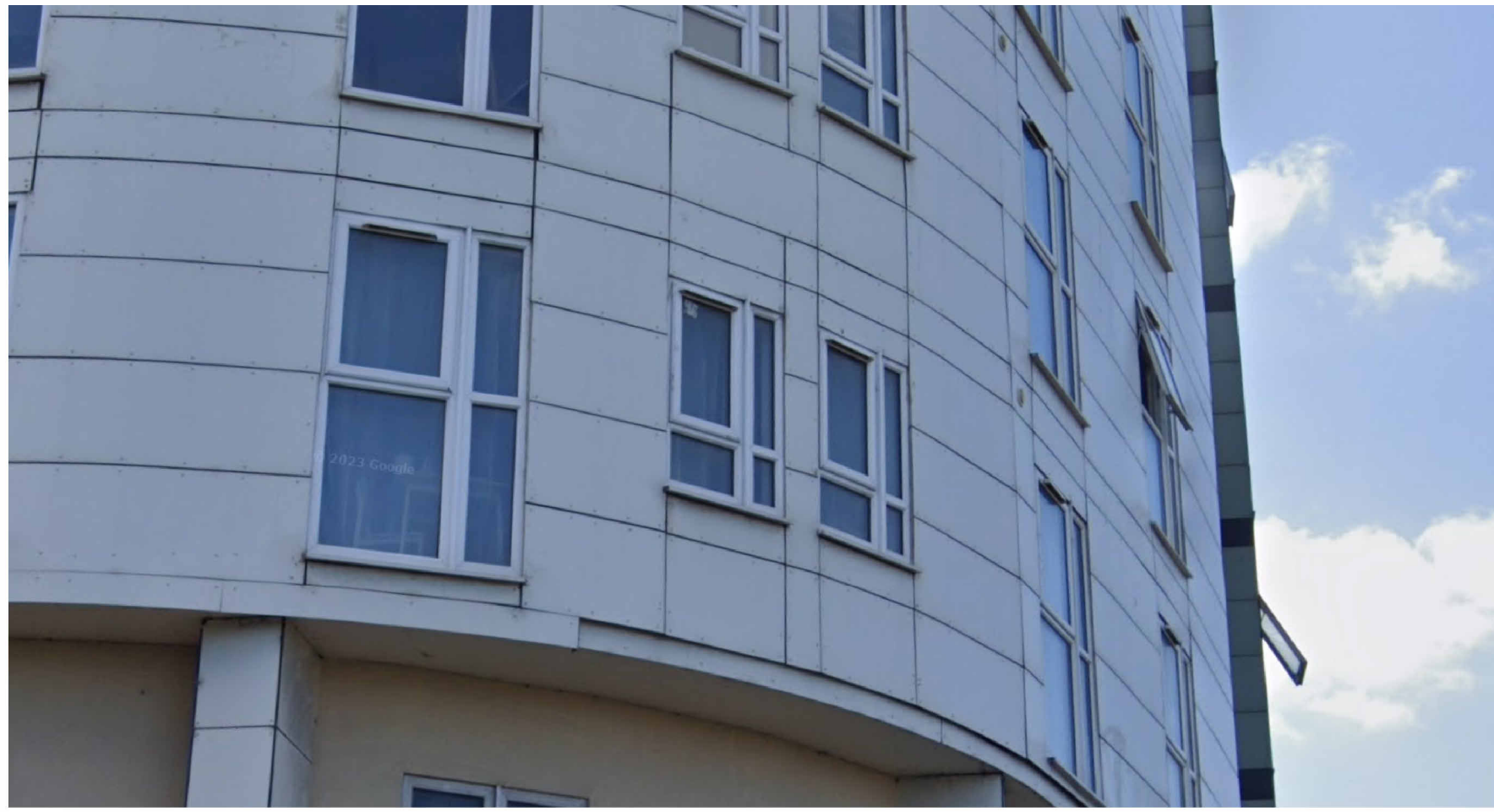


FIG.7



FIG.11

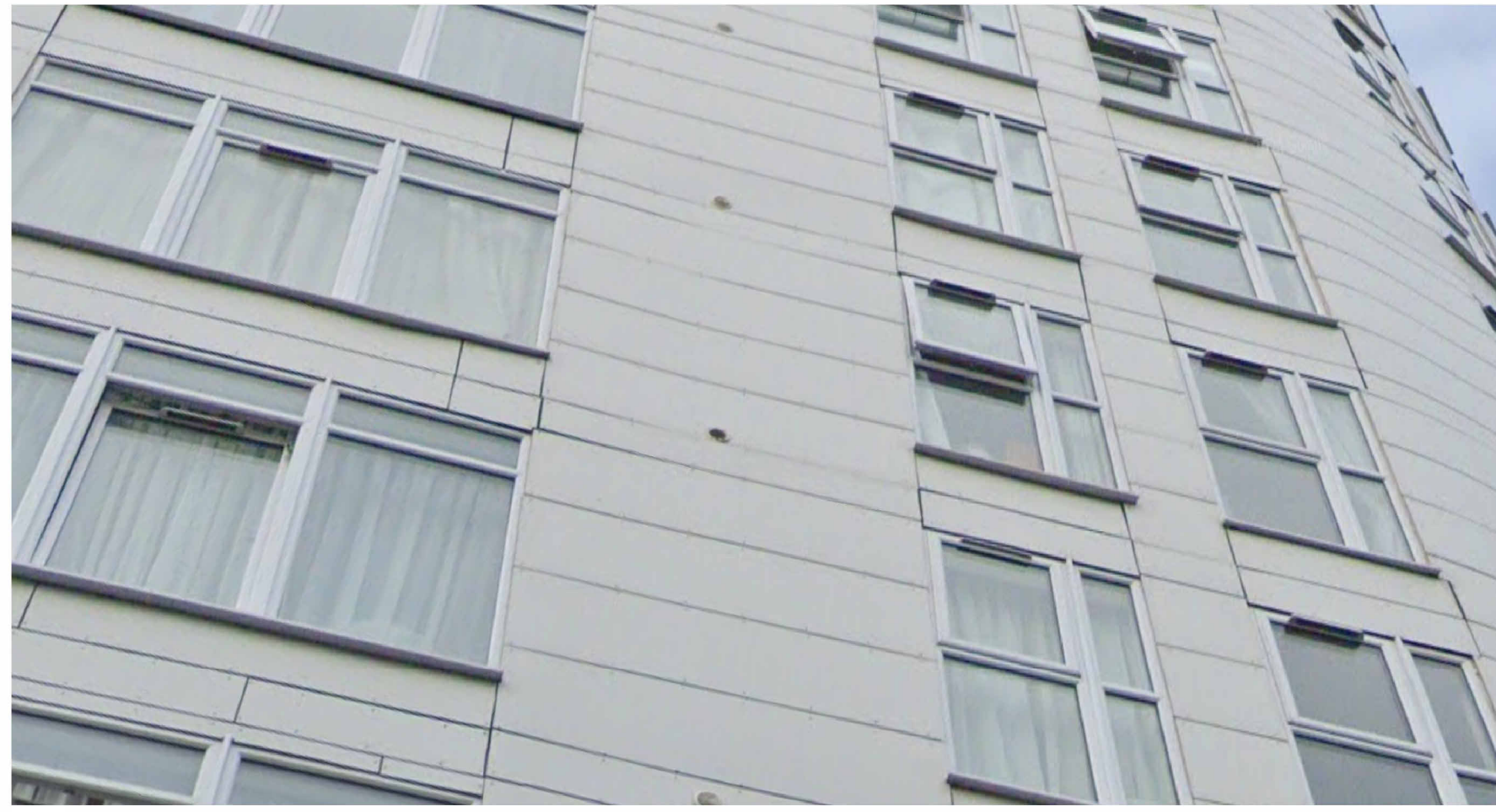


FIG.4



FIG.8

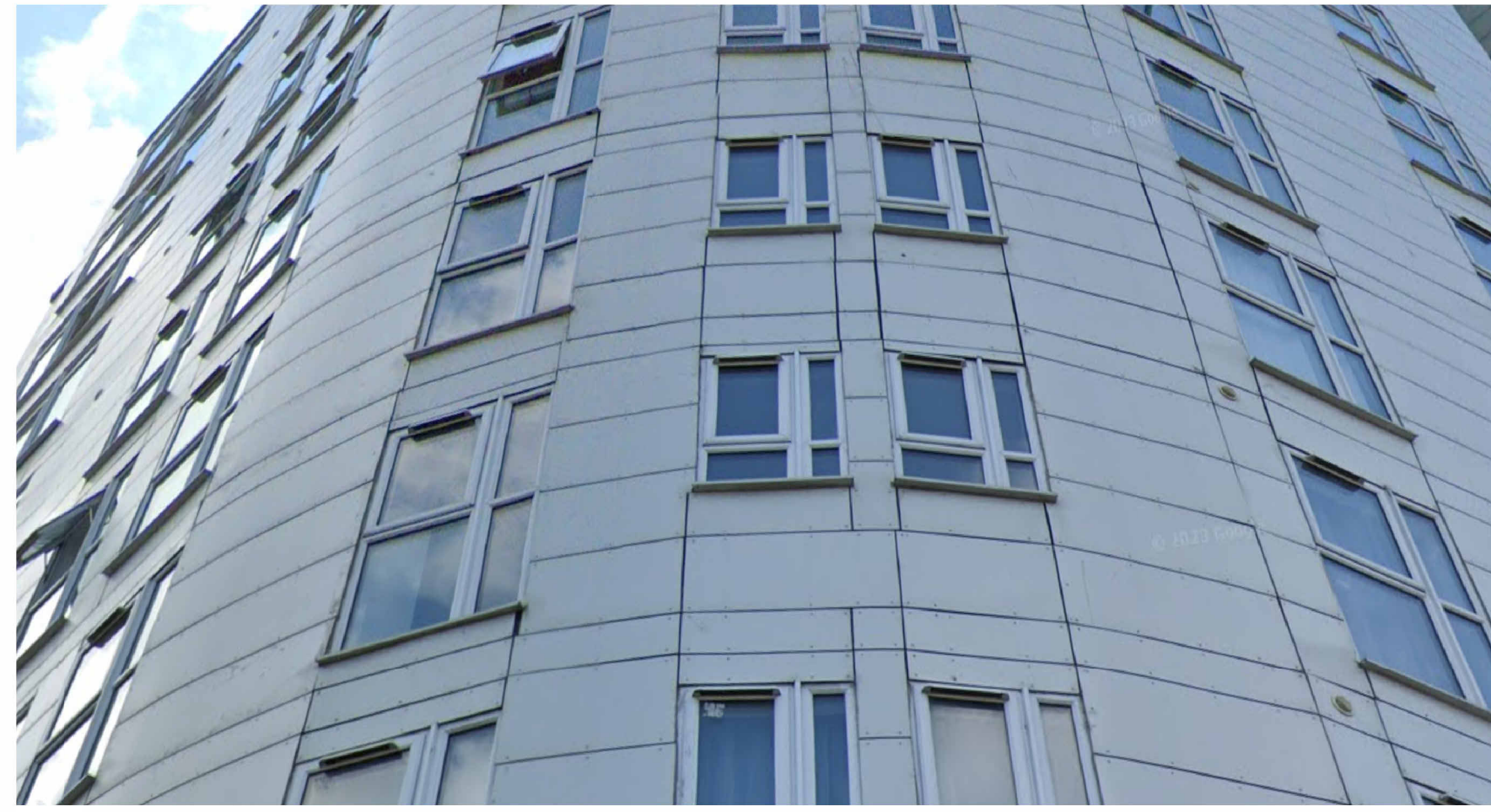


FIG.12

**IMAGE KEY:**

(IMAGES READ FROM TOP LEFT DOWN)

**FIG.1**  
CORNER OF HEELIS STREET 1. NOTE IRREGULAR CLADDING LAYOUT ACROSS FACADE.

**FIG.2**  
CORNER OF HEELIS STREET 2. NOTE WIDE SPACING OF VERTICAL PANELS.

**FIG.3**  
CORNER OF HEELIS STREET 3. NOTE IRREGULAR CUTS BELOW CILLS AND AT HEADS.

**FIG.4**  
CORNER OF HEELIS STREET 4. CLOSE UP SHOWING NARROW 'SLITHERS' OF CLADDING TO WINDOW HEADS AND IRREGULAR HORIZONTAL SETTING OUT.

**FIG.5**  
CORNER OF BURLEIGH AND JOHN ST. NOTE IRREGULAR CUTS AND HORIZONTAL DEPTHS.

**FIG.6**  
BURLEIGH STREET 1. GREY BANDING NOT CENTRAL TO WINDOW LAYOUT OF HEADS AND CILLS AND SMALL CUTS TO WHITE.

**FIG.7**  
BURLEIGH STREET 2. NOTE SMALL CUTS ON VERTICAL PANELS AND STEP IN LOWER TRIM.

**FIG.8**  
BURLEIGH STREET 3. HIGHLIGHTING IRREGULAR PANELS ACROSS THE ELEVATION.

**FIG.9**  
CORNER OF JOHN ST. AND HEELIS. HIGHLIGHTING GREY BANDING VARIATION TO WINDOW HEADS REQUIRING UNNECESSARY CUTS WHICH CARRIES THROUGH WHITE PANELS TOO.

**FIG.10**  
HEELIS STREET. NOTE GREY BANDING TO WINDOW HEAD SPACING AND CUTS TO CILLS AND HEADS ON WHITE CLADDING.

**FIG.11**  
HEELIS STREET. SHOWING GENERAL CLADDING LAYOUT ACROSS THE FACADE.

**FIG.12**  
BURLEIGH STREET. SHOWING IRREGULAR CUTS ABOVE HEADS AND BETWEEN WINDOWS.

**EXISTING MATERIALS KEY**

- 1** RAINSCREEN CLADDING - COLOUR 01: WHITE  
Existing colour/ product - Fundermax Exterior F, 6mm 0742 (pebble grey NT)
- 2** RAINSCREEN CLADDING - COLOUR 02: GREEN  
Existing colour/ product - Fundermax Exterior F, 6mm 0662 (Jade Green NT)
- 3** RAINSCREEN CLADDING - COLOUR 03: GREY  
Existing colour/ product - Fundermax Exterior F, 6mm 0077 (Charcoal NT)
- 4** RENDER

**NB:**  
KEY INCLUDED FOR REFERENCE TO COLOURS.  
MATERIAL NOT DENOTED ON IMAGES.

Four Architects Limited (11613893)  
Note:  
This drawing is copyright.  
Do not scale dimensions from drawings.  
All dimensions must be checked on site by contractor or suitable qualified individual.  
Contractor to report any discrepancies, errors or omissions prior to commencing work.

**Notes:**

**Project Title:**

SKYLINE

**Location:**

BARNSELY

**Drawing title:**

Existing\_Building Images

**Status:**

FIRST ISSUE

**Scale:**

1 : 1

**Job Number:**

23-021

**Drawing Number:**

FA-DR-03-214

**Date:**

JUNE '24

**Revision:**

P2



**Four**  
Architects

113 Portland Street, Manchester, M1 6DW  
Tel. 0161 4707969 Email. info@fourarchitects.co.uk