

# ECoW Certificate - Site Inspection Report

Woolley Colliery Road, Barnsley



<b>Site Inspection reference</b>	SI-8088-01	<b>Date of inspections</b>	14/02/2025
<b>Inspected by</b>	Christopher Shaw BSc (Hons) MCIEEM Principal Ecologist		
<b>Site details</b>	<p><u>Woolley Colliery Road, Darton, Barnsley, S75 5HQ</u></p> <p>The Site has previously been granted Outline planning permission (subject to conditions and a S106) for up to 115 dwellings, split across two parcels of land. At this time, the developer was Rouse Homes. This application has since been withdrawn by the developer and the Decision likewise withdrawn by the council.</p> <p>The Site has since been taken on by Gleeson, who are planning to submit a new, full planning application, with Ecological surveys being updated and mitigation being in keeping with what had previously been agreed between Rouse Homes and Barnsley Council.</p>		
<b>Timeline and description of works to date</b>	<p><u>July 2023</u> - A Biodiversity Management Plan (BMP) was produced for Rouse Homes and submitted alongside their Outline Planning application. Amongst other things, this document set out the proposed butterfly mitigation measures, which was agreed with the Local Planning Authority Ecologist, with conditions imposed.</p> <p>Condition 34 of the outline planning permission stipulated that an appropriately experienced and qualified ECoW would be appointed by Rouse Homes to oversee certain stages of development, in line with the BMP.</p> <p><u>March 2023</u> - Rouse Homes along with volunteers from the Yorkshire Butterfly Conservation Trust (YBCT), undertook a programme of scrub clearance within the offsite SUDS basin to the north. This supports the main breeding population of Small Blue.</p> <p><u>April 2023</u> - Contractors from Rouse Homes, under the direction of the ECoW, created a total of six butterfly banks between the northern SUDS basin, and the proposed butterfly mitigation area; so as to provide stepping-stones for Small Blue butterflies to move between the proposed and existing habitat; see Brooks Report SI-6218-02 for full details.</p> <p><u>October 2023</u> - Mature Kidney vetch plants were translocated from the red line boundary to the stepping-stones. A mix of common birds foot trefoil and kidney vetch seeds were then scattered over each of the six butterfly banks, along with other suitable habitat within the blue line boundary; see Brooks Report SI-6218-03 for full details.</p> <p><u>January 2024</u> - Volunteers from the YBCT, undertook some additional scrub clearance along the existing bank/stepping stone within the blue line land. YBCT confirmed at the time that adult small blue were recorded using this bank.</p> <p>Monitoring and aftercare of the stepping stones was due to take place across 2024, but due to Rouse Homes withdrawing from the Site, this was not completed.</p>		



Unit A, 1 Station Road, Guiseley, LEEDS LS20 8BX

Phone **01943 884451**

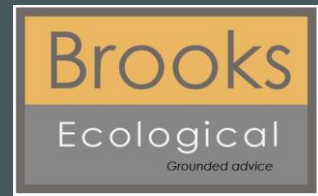
Email: [admin@brooks-ecological.co.uk](mailto:admin@brooks-ecological.co.uk)

[www.brooks-ecological.co.uk](http://www.brooks-ecological.co.uk)

Registered in England Number 5351418

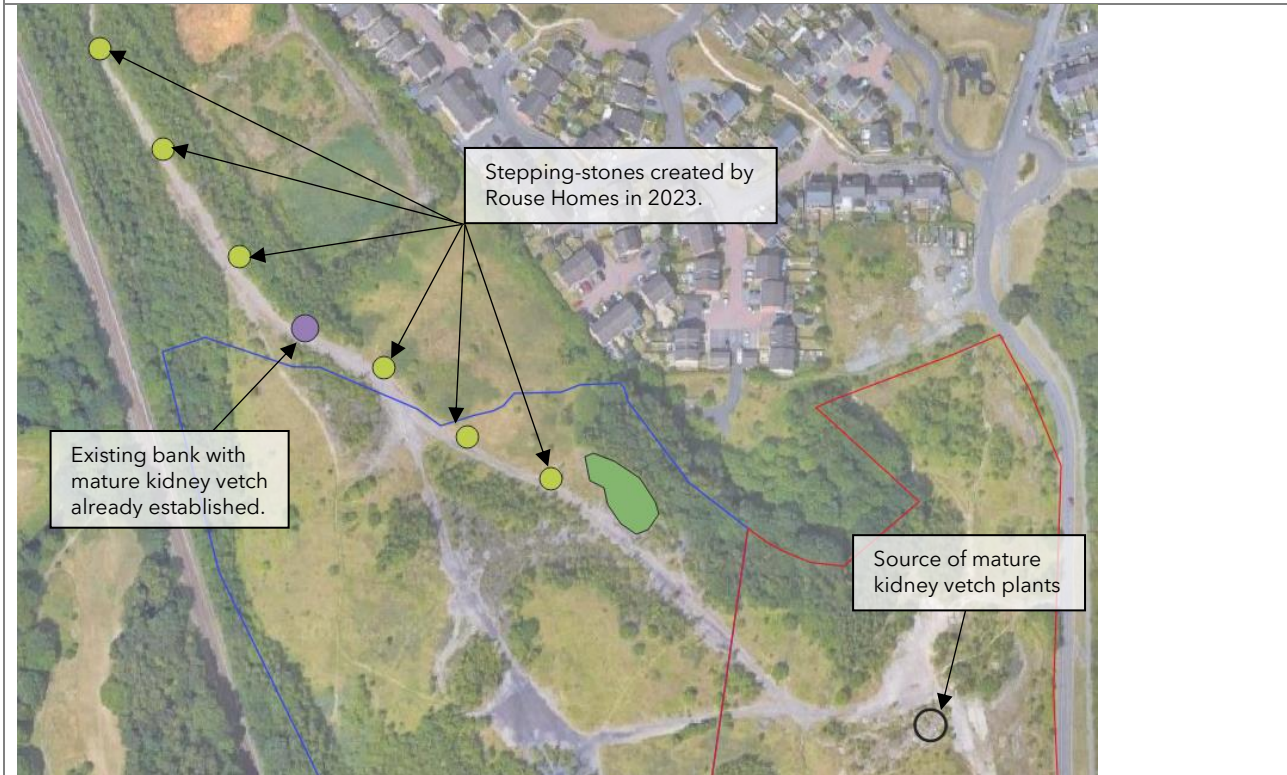
# ECoW Certificate - Site Inspection Report

Woolley Colliery Road, Barnsley



<b>Task Description</b>	<p>Brooks Ecological were approached by Gleeson's in late 2024 for advice on what measures were required to bring the butterfly mitigation (started by Rouse Homes) back in line with the BMP.</p> <p>Principal Ecologist Christopher Shaw, acting in the capacity of ECoW for the project, attended Site on the 14<sup>th</sup> February 2025 to assess the stepping stones and bring them back into good condition.</p> <p>All the stepping stones held at least some mature kidney vetch and birds foot trefoil plants - although all had been heavily grazed by rabbits and supported a range of 'weed' species.</p> <p>Undesirable species that had naturally colonised the stepping stones were removed by hand, namely the docks, thistles, teasel and bramble. The stepping stones were then lightly raked and overseeded with Kidney vetch seeds. Some additional mature kidney vetch plants were then transplanted from the red line boundary to the stepping stones.</p> <p>Further aftercare visits will be carried out across summer 2025 to remove undesirable species, and should rabbit grazing continue to be an issue, rabbit-proof fencing may need to be installed around the stepping stones.</p>
-------------------------	--

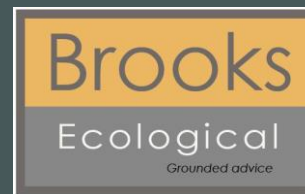
**Figure 1** Plan showing where Conservation Scrub-clearance works were completed, and the approximate location of the stepping stones.



Unit A, 1 Station Road, Guiseley, LEEDS LS20 8BX  
Phone **01943 884451**  
Email: [admin@brooks-ecological.co.uk](mailto:admin@brooks-ecological.co.uk)  
[www.brooks-ecological.co.uk](http://www.brooks-ecological.co.uk)  
Registered in England Number 5351418

# ECoW Certificate - Site Inspection Report

Woolley Colliery Road, Barnsley



**Photo 1 & 2** Typical stepping stone before and after intervention



**Photo 3** Mature kidney vetch on stepping stone.



**Photo 4** Stepping stone after intervention



**Photo 5** Stepping stone before and after intervention



Unit A, 1 Station Road, Guiseley, LEEDS LS20 8BX

Phone **01943 884451**

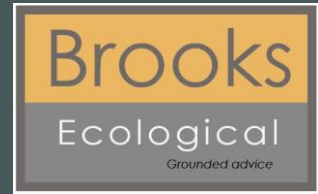
Email: [admin@brooks-ecological.co.uk](mailto:admin@brooks-ecological.co.uk)

[www.brooks-ecological.co.uk](http://www.brooks-ecological.co.uk)

Registered in England Number 5351418

# ECoW Certificate - Site Inspection Report

Woolley Colliery Road, Barnsley



**Photo 6** Existing bank cleared of scrub by YBCT in January 2024



**Photo 6** Kidney vetch growing on bank



Unit A, 1 Station Road, Guiseley, LEEDS LS20 8BX

Phone **01943 884451**

Email: [admin@brooks-ecological.co.uk](mailto:admin@brooks-ecological.co.uk)

[www.brooks-ecological.co.uk](http://www.brooks-ecological.co.uk)

Registered in England Number 5351418