



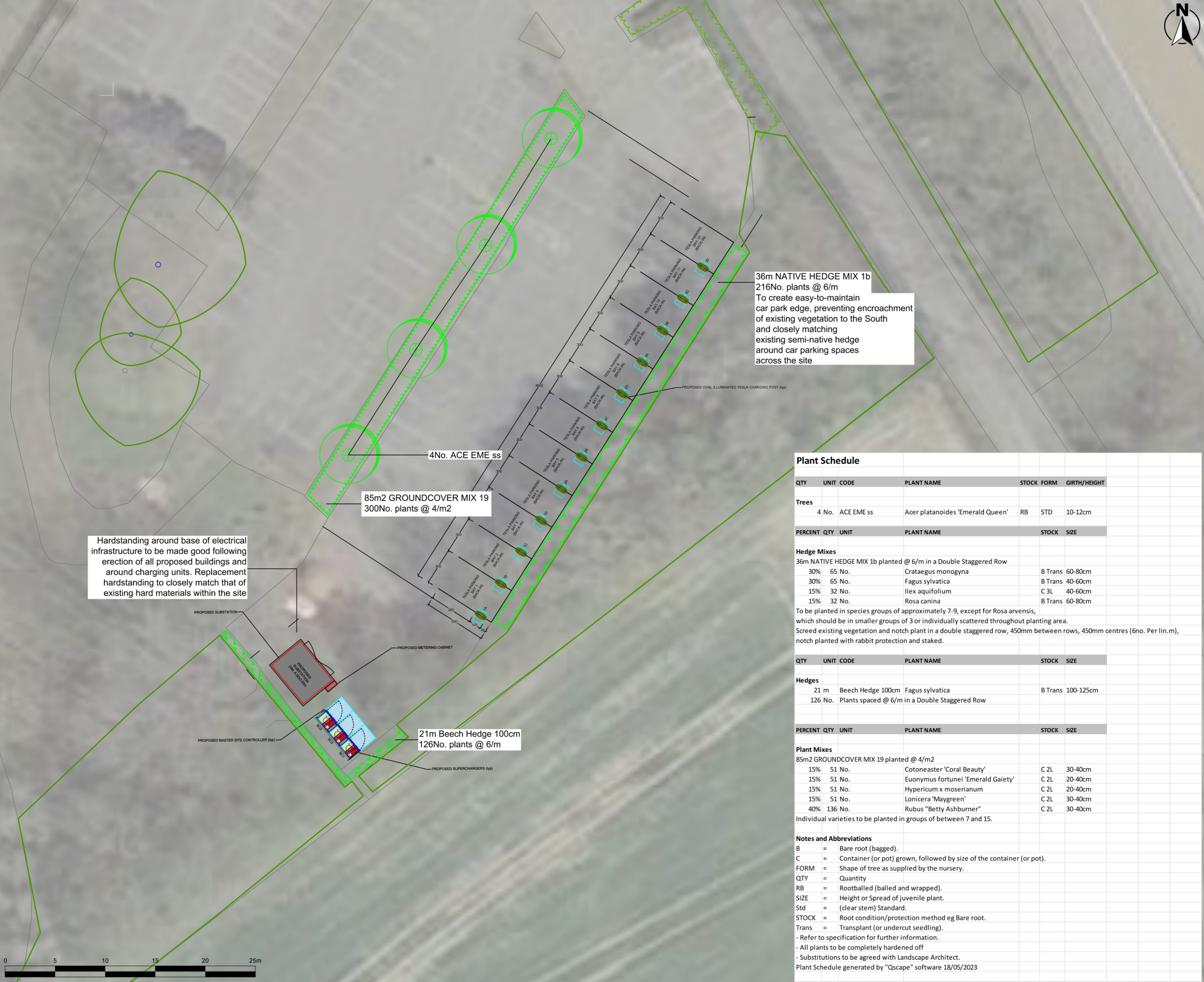
- NOTES**
- Do not scale from this drawing for construction purposes
  - This drawing is to be read in conjunction with all relevant drawings and documents associated with this project.
  - All surveyed information including levels and layout is provided by others
  - All existing and proposed dimensions, levels and locations to be checked and verified by the main contractor on site prior to the commencement of the works and any anomalies reported to the engineer.

## KEY

### Soft Works

- Existing Shrubs
- Existing Tree
- Planting-Groundcover Mix
- Planting-Hedges
- Tree-Select Standard

Hardstanding around base of electrical infrastructure to be made good following erection of all proposed buildings and around charging units. Replacement hardstanding to closely match that of existing hard materials within the site



**36m NATIVE HEDGE MIX 1b**  
 216No. plants @ 6/m  
 To create easy-to-maintain car park edge, preventing encroachment of existing vegetation to the South and closely matching existing semi-native hedge around car parking spaces across the site

**85m2 GROUNDCOVER MIX 19**  
 300No. plants @ 4/m2

**4No. ACE EME ss**

**21m Beech Hedge 100cm**  
 126No. plants @ 6/m

### Plant Schedule

QTY	UNIT	CODE	PLANT NAME	STOCK	FORM	GIRTH/HEIGHT
<b>Trees</b>						
4	No.	ACE EME ss	Acer platanoides 'Emerald Queen'	RB	STD	10-12cm

PERCENT	QTY	UNIT	PLANT NAME	STOCK	SIZE
<b>Hedge Mixes</b>					
36m NATIVE HEDGE MIX 1b planted @ 6/m in a Double Staggered Row					
30%	65	No.	Crataegus monogyna	B Trans	60-80cm
30%	65	No.	Fagus sylvatica	B Trans	40-60cm
15%	32	No.	Ilex aquifolium	C 3L	40-60cm
15%	32	No.	Rosa canina	B Trans	60-80cm

To be planted in species groups of approximately 7-9, except for Rosa arvensis, which should be in smaller groups of 3 or individually scattered throughout planting area. Screenshot existing vegetation and notch plant in a double staggered row, 450mm between rows, 450mm centres (6no. Per lin.m), notch planted with rabbit protection and staked.

QTY	UNIT	CODE	PLANT NAME	STOCK	SIZE
<b>Hedges</b>					
21	m	Beech Hedge 100cm	Fagus sylvatica	B Trans	100-125cm
126	No.	Plants spaced @ 6/m in a Double Staggered Row			

PERCENT	QTY	UNIT	PLANT NAME	STOCK	SIZE
<b>Plant Mixes</b>					
85m2 GROUNDCOVER MIX 19 planted @ 4/m2					
15%	51	No.	Cotoneaster 'Coral Beauty'	C 2L	30-40cm
15%	51	No.	Euonymus fortunei 'Emerald Gaiety'	C 2L	20-40cm
15%	51	No.	Hypericum x moserianum	C 2L	20-40cm
15%	51	No.	Lonicera 'Maygreen'	C 2L	30-40cm
40%	136	No.	Rubus 'Betty Ashburner'	C 2L	30-40cm

Individual varieties to be planted in groups of between 7 and 15.

### Notes and Abbreviations

- B = Bare root (bagged).
  - C = Container (or pot) grown, followed by size of the container (or pot).
  - FORM = Shape of tree as supplied by the nursery.
  - QTY = Quantity
  - RB = Rootballed (balled and wrapped).
  - SIZE = Height or Spread of juvenile plant.
  - Std = (clear stem) Standard.
  - STOCK = Root condition/protection method eg Bare root.
  - Trans = Transplant (or undercut seedling).
  - Refer to specification for further information.
  - All plants to be completely hardened off
  - Substitutions to be agreed with Landscape Architect.
- Plant Schedule generated by "Qscape" software 18/05/2023

PL02	23/05/2023	Fence around cabinet and controller omitted	VM	CG	TB
PL01	18/05/2023	For Planning	VM	CG	TB
Rev	Date	Description	DRA	CHK	APP

**Project**  
 The Old Post Office

**Client**  
 Tesla Motors Ltd

**Drawing Title**  
 Landscape Details

Status	Date	Scale
For Planning	18/05/2023	1:200 @ A2

Drawn	Designed	Checked	Approved
VM	VM	CG	TB

DWG No.	Revision
3030.014.ENZ.XX.00.DR.L.45.102	PL02

