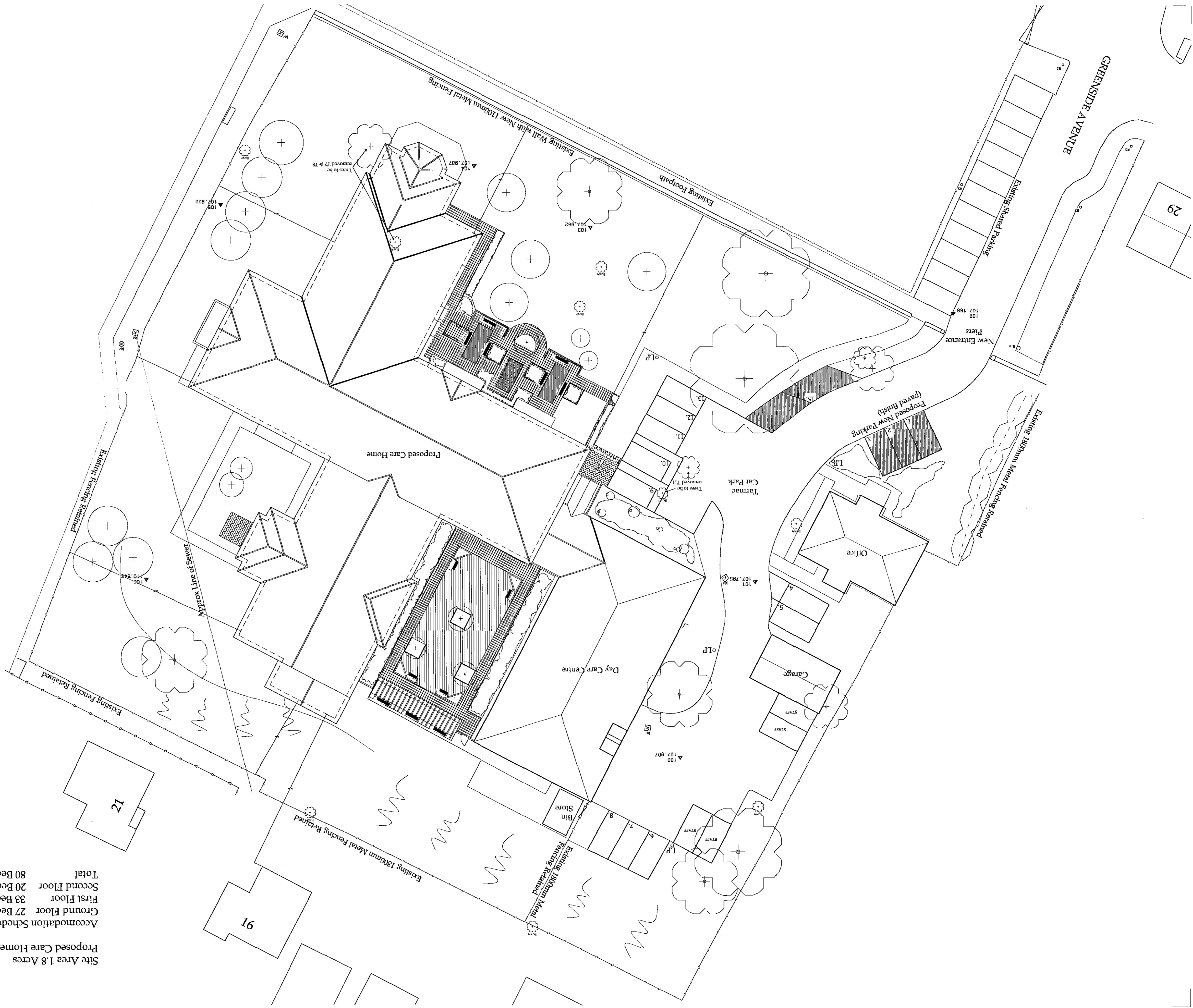
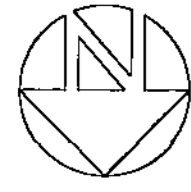



Site Area 1.8 Acres  
 Proposed Care Home Footprint 1225m<sup>2</sup>  
 Accommodation Schedule  
 Ground Floor 27 Beds  
 First Floor 33 Beds  
 Second Floor 20 Beds  
 Total 80 Beds

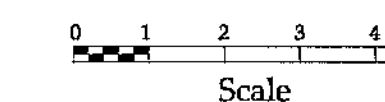
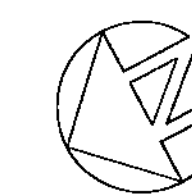


Revision	Description	Date
A	Additional Staff Parking added. Update of plan in accordance with roof plan.	06.10.11

Do not scale from this drawing. Any errors, omissions and discrepancies as they are discovered and instruction sought before proceeding.

Drawing Status: Construction


 Mapplewell, Barnsley  
 Architects  
 1300 @ A1 Date: Sept 11  
 Drawn: kp  
 Scale: 1:200 @ A1  
 1335 L 191 01  
 A



### Accommodation Schedule

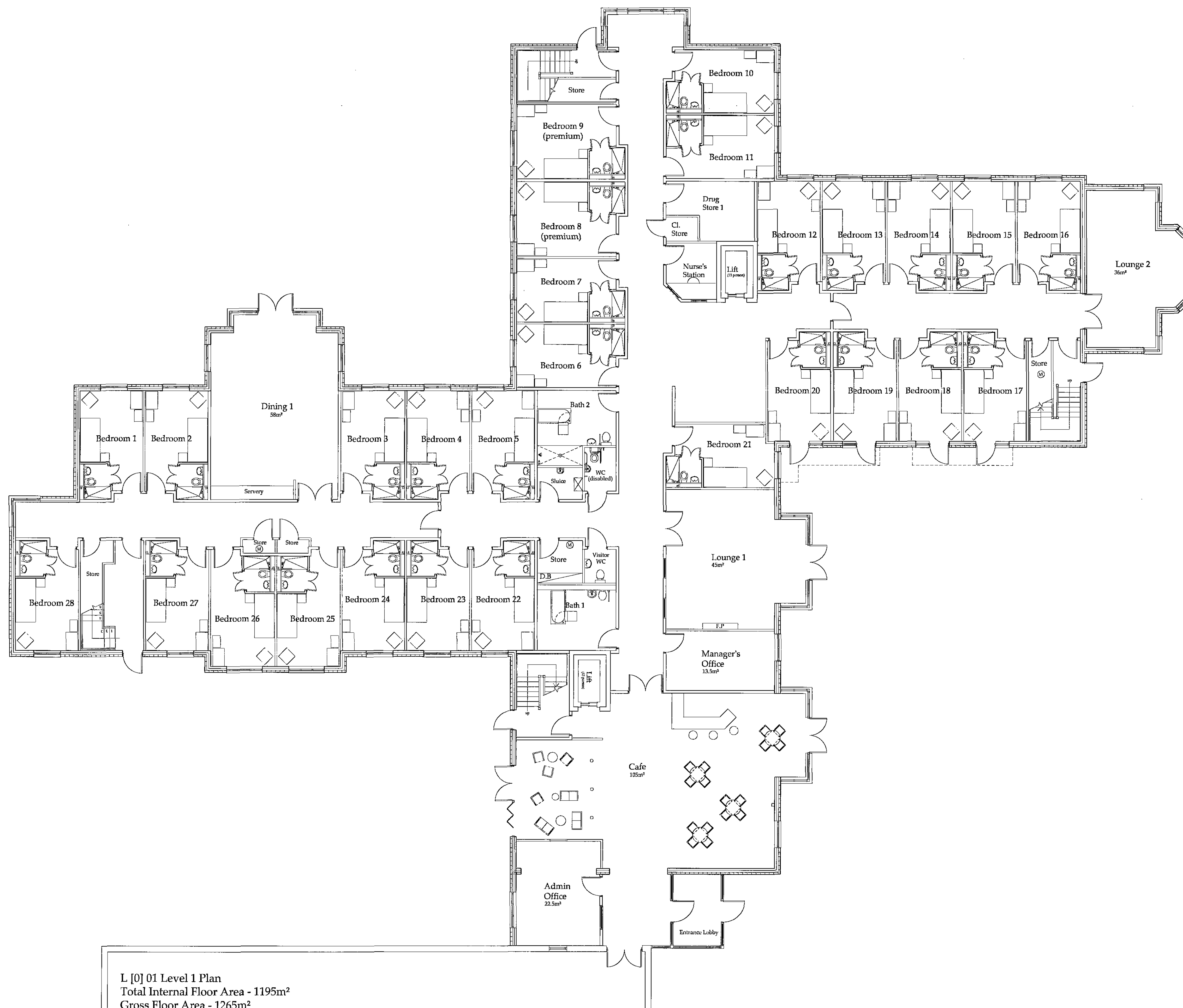
Lounge 1 - 45m<sup>2</sup>  
 Lounge 2 - 36m<sup>2</sup>  
 Dining 1 - 58m<sup>2</sup>  
 Total Lounge / Dining area - 139m<sup>2</sup>

28 Single Bedrooms with Ensuities

2 Offices  
 2 Bathroom  
 1 Disabled WC  
 1 Visitor's WC  
 1 Drug Store  
 1 Sluice  
 Nurse's Station  
 Cleaner's Store  
 Stores

Manifold Positions

Ⓜ D.B Distribution Board



L [0] 01 Level 1 Plan  
 Total Internal Floor Area - 1195m<sup>2</sup>  
 Gross Floor Area - 1265m<sup>2</sup>

Revision	Description	Date
C	Amendments to window positions, Bed, Line of canopies shown, Other minor amendments	09.11
B	Internal layout changes following meeting with the client, including reorganization of bedroom layout and adjustment of openings to suit.	24.08.11
A	Internal layout changes	10.08.11

Do not scale from this drawing. Any errors, omissions and discrepancies to be reported to the Architects as soon as they are discovered and instruction sought before proceeding.

Drawing Status: Planning

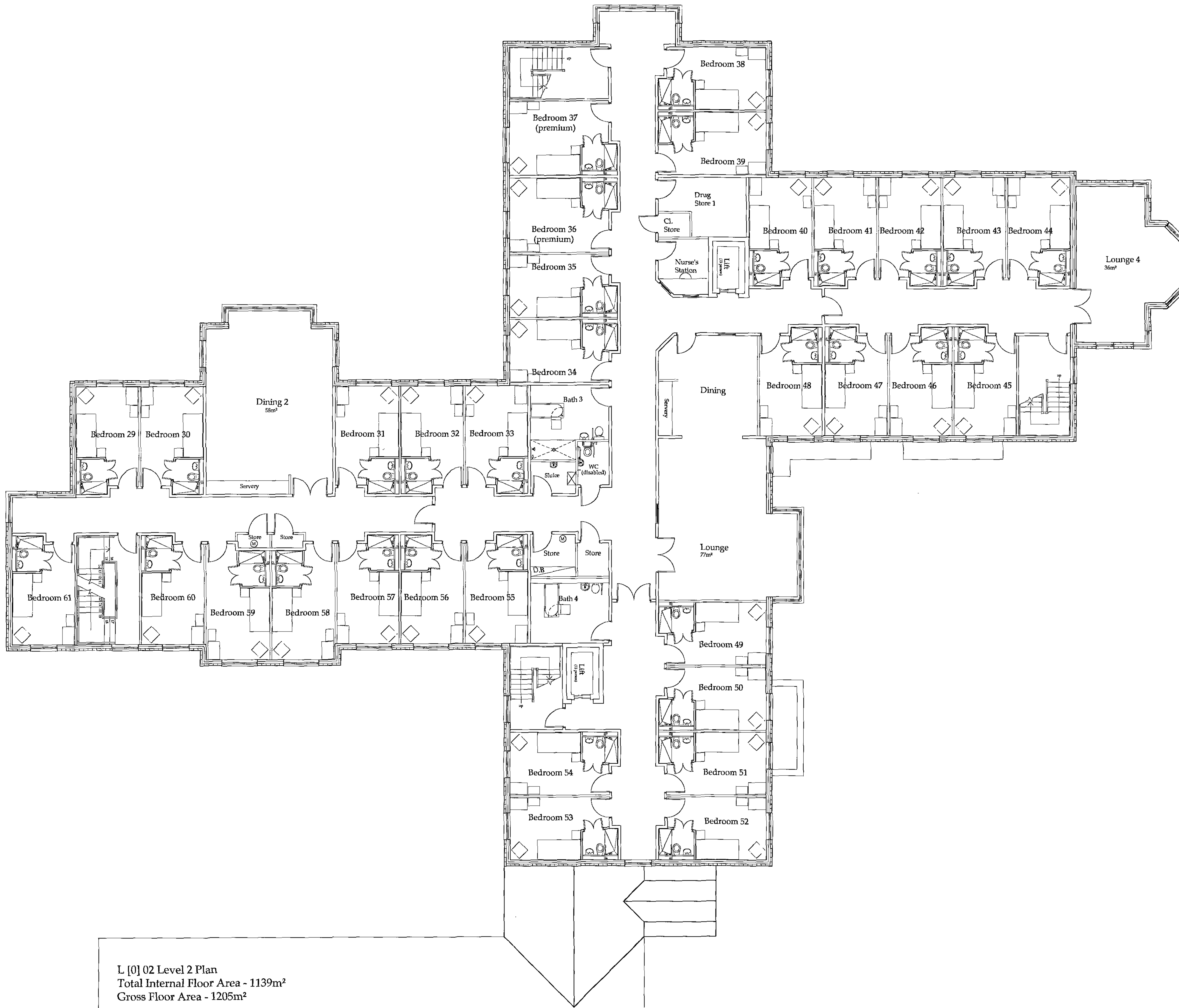
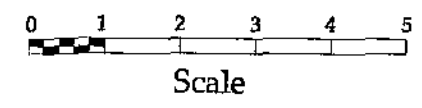
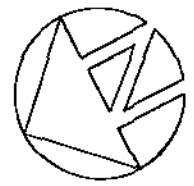
12 OCT 2011

**ALSTON MURPHY ARCHITECTS**  
 87 Gange Road  
 Mapplewell, Barnsley  
 S19 2JG  
 Tel: 0114 251 2200  
 Fax: 0114 251 2200  
 email: alstonm@alstonm.co.uk

Proposed Care Home, Mapplewell, Barnsley

General Arrangement Level 1 Plan

Scale: 1:100 @ A1 Date: July '11  
 1:200 @ A3  
 Drawn: kp Auth:  
 1535 L [0] 01 C



**Accommodation Schedule**  
 Lounge/ Dining - 77m<sup>2</sup>  
 Lounge 4 - 36m<sup>2</sup>  
 Dining 2 - 58m<sup>2</sup>  
 Total Lounge / Dining area - 171m<sup>2</sup>

33 Single Bedrooms with Ensuities

2 Bathroom  
 1 Disabled WC  
 1 Drug Store  
 1 Sluice  
 Nurse's Station  
 Cleaner's Store  
 Stores

Ⓜ Manifold Positions

D.B Distribution Board

Revision	Description	Date
C	Amendments to window positions, Bed, Line of canopies shown, Other minor amendments	06.10.11
B	Internal layout changes following meeting with the client, including reorganisation of bedroom layout and adjustment of openings to suit.	24.08.11
A	Internal layout changes	10.08.11

Do not scale from this drawing. Any errors, omissions and discrepancies to be reported to the Architects as soon as they are discovered and instruction sought before proceeding.

Drawing Status: Planning

L [0] 02 Level 2 Plan  
 Total Internal Floor Area - 1139m<sup>2</sup>  
 Gross Floor Area - 1205m<sup>2</sup>

**ALSTON MURPHY ARCHITECTS**  
 architects  
 planning & interior design

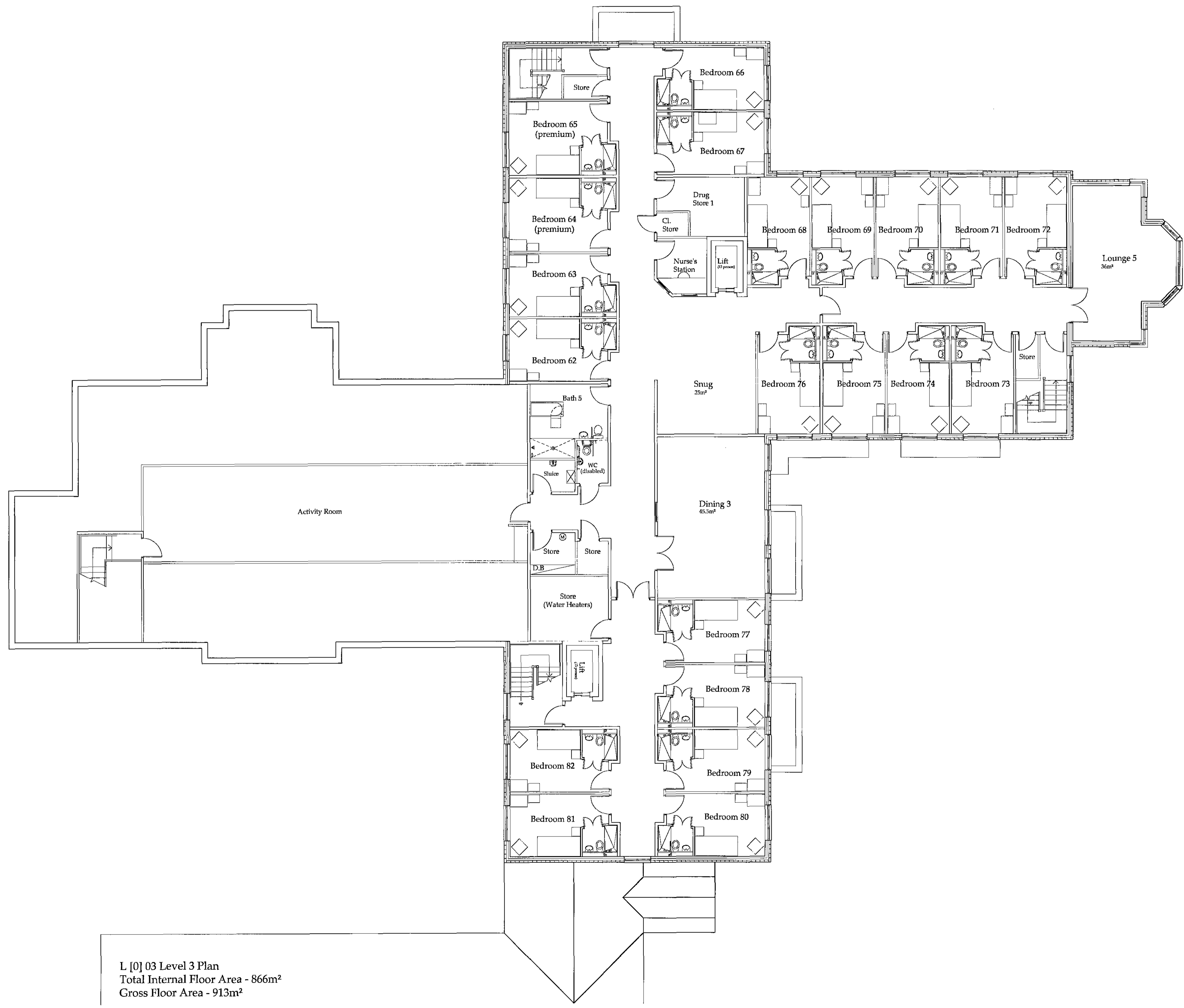
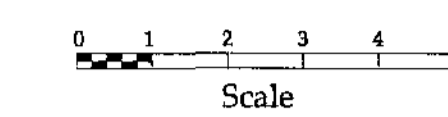
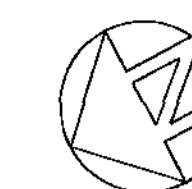
17 Garsington Road, Oxford OX4 2DQ  
 Tel: 01865 206200  
 Fax: 01865 206201  
 www.alstonmurphy.com

Proposed Care Home, Mapplewell, Barnsley

**General Arrangement Level 2 Plan**

Scale: 1:100 @ A1 Date: July '11  
 1:200 @ A3  
 Drawn: jsp Auth: C  
 1535 L [0] 02

12 OCT 2011



**Accommodation Schedule**

Lounge 6 - 36m<sup>2</sup>  
 Lounge/Dining 5 - 45.5m<sup>2</sup>  
 Snug 3 - 25m<sup>2</sup>

Total Lounge / Dining area - 106.5m<sup>2</sup>

21 Single Bedrooms with Ensuites

- 1 Bathroom
- 1 Shower Room
- 1 Disabled WCs
- 1 Drug Store
- 1 Sluice
- Nurse's Station
- Cleaner's Store
- Stores

(M) Manifold Positions

D.B Distribution Board

L [0] 03 Level 3 Plan  
 Total Internal Floor Area - 866m<sup>2</sup>  
 Gross Floor Area - 913m<sup>2</sup>

Revision	Description	Date
C	Amendments to window positions, Bed, Line of canopies shown, Other minor amendments	06.10.11
B	Internal layout changes following meeting with the client, including reorganisation of bedroom layout and adjustment of openings to suit.	24.08.11
A	Internal layout changes	10.08.11

Do not scale from this drawing. Any errors, omissions and discrepancies to be reported to the Architects as soon as they are discovered and instruction sought before proceeding.

Drawing Status:	Planning
-----------------	----------

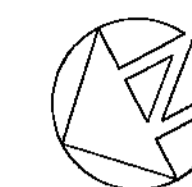
ALSTON MURPHY ARCHITECTS  
17 College Lane, Mapplewell, Barnsley S19 2JG  
 Tel: 0114 236 2000 Fax: 0114 236 1000  
 www.alstonmurfphy.com

Proposed Care Home, Mapplewell, Barnsley

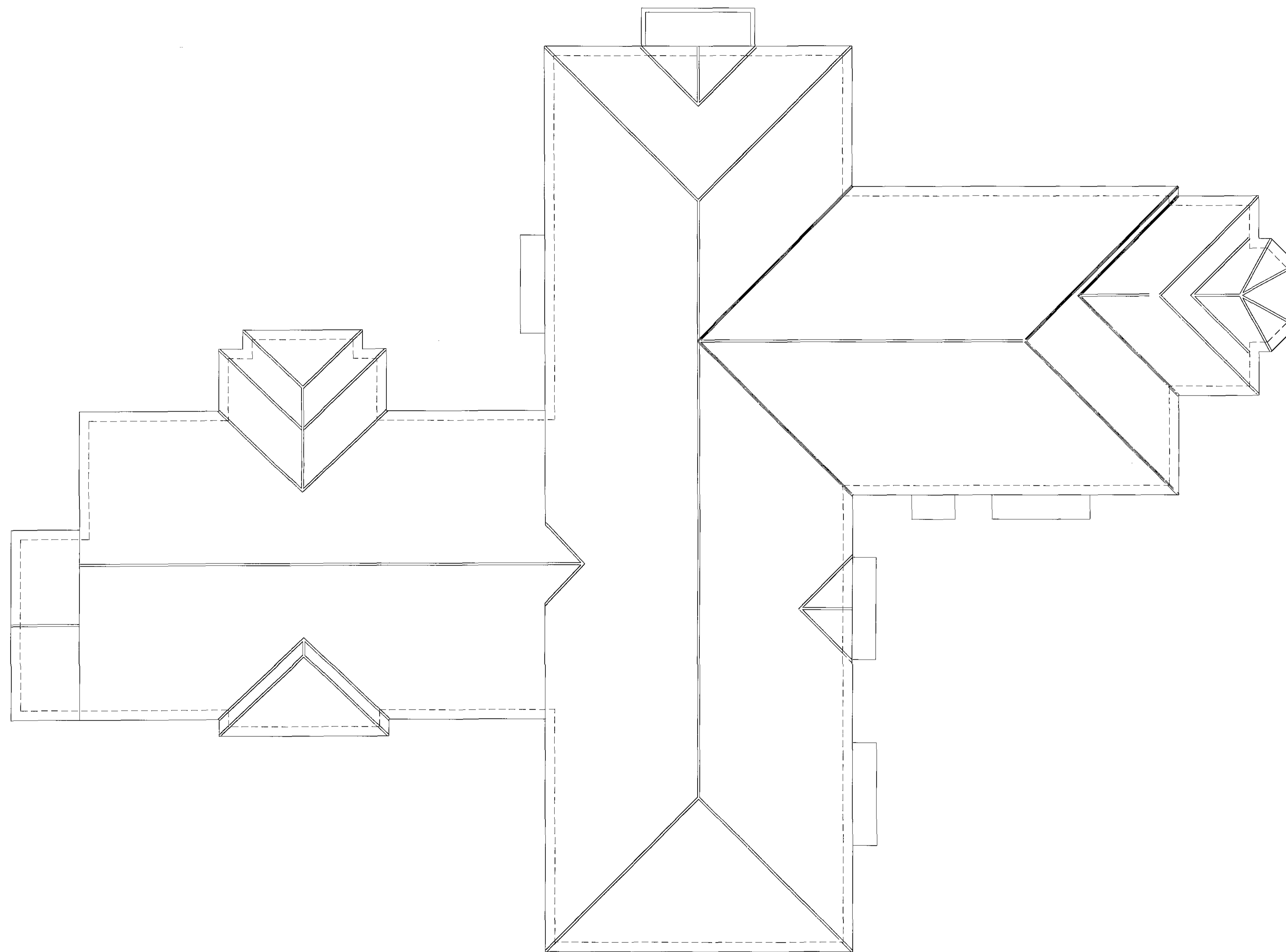
**General Arrangement Level 3 Plan**

Scale: 1:100 @ A1 Date: July '11  
 1:200 @ A3  
 Drawn: xp Auth:  
 1535 L [0] 03 C

12 OCT 2011



0 1 2 3 4 5  
Scale




Revision	Description	Date
A	Amendments to two storey roof section to form gable at the end to allow additional fire escape from activity room.	06.10.11

Do not scale from this drawing. Any errors, omissions and discrepancies to be reported to the Architects as soon as they are discovered and instruction sought before proceeding.

Drawing Status: Planning

12 OCT 2011



**ALSTON MURPHY ASSOCIATES**  
architects  
planning & interiors

11 Colgate House  
Newcastle upon Tyne  
NE1 5SE  
Tel: 0191 233 0000  
Fax: 0191 233 0000  
info@alstonmurray.com

Proposed Care Home,  
Mapplewell, Bamsley

**General Arrangement  
Roof Plan**

Scale: 1:100 @ A1 Date: Sept 11  
1:200 @ A3  
Drawn: jsp Auth:  
1535 L [0] 04 A

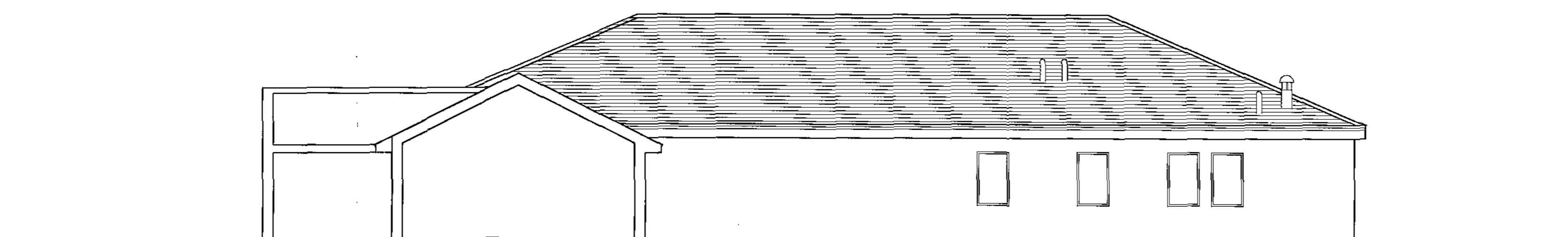
Roof Pitch 26.5°  
 Walls in Facing Brickwork  
 Art Stone Banding  
 Roof Concrete Roof Tiles  
 Upvc Windows  
 Upvc Rainwater Goods



1535 L [0] 21 South West Elevation as Proposed



1535 L [0] 22 South East Elevation as Proposed



1535 L [0] 23 South East Elevation as Proposed of Day Care Centre

Revision	Description	Date
A	Elevations amended as shown	06.10.11

Do not scale from this drawing.  
 Any errors, omissions and discrepancies  
 to be reported to the Architects as soon  
 as they are discovered and instruction  
 sought before proceeding.

Drawing Status	Planning
----------------	----------

Proposed Care Home  
 Mapplewell, Barnsley

Elevations as Proposed

ALSTON  
 MURPHY  
 ASSOCIATES  
 ARCHITECTS  
 (INCORPORATING)  
 27 Fiddlers Lane  
 Newbarn, Barnsley  
 S70 4EJ  
 Tel: 01454 256 228  
 Fax: 01454 272 639  
 info@alstonmurfy.com

Scale: 1:100 @ A1 Date: July 11  
 Drawn: KP Auth:  
 1535 L [0] 21- 23 A

12 OCT 2011

Roof Pitch 26.5°  
 Walls in Facing Brickwork  
 Art Stone Banding  
 Roof Concrete Roof Tiles  
 Upvc Windows  
 Upvc Rainwater Goods



1535 L [0] 24 North East Elevation as Proposed



1535 L [0] 25 North West Elevation as Proposed

Revision	Description	Date
A	Elevations amended as shown	06.10.11

Do not scale from this drawing.  
 Any errors, omissions and discrepancies  
 to be reported to the Architects as soon  
 as they are discovered and instruction  
 sought before proceeding.

Drawing Status: Planning

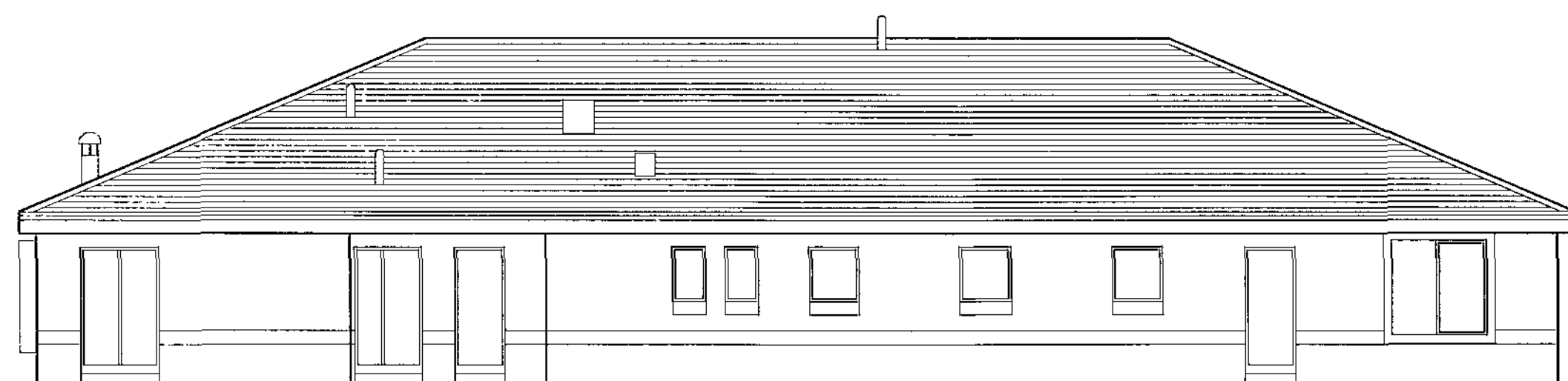
12 OCT 2011

Proposed Care Home  
 Mapplewell, Barnsley

**ALSTON  
 MURPHY  
 ARCHITECTS**  
 architects  
 100th Street  
 Newville  
 Leeds  
 LS20 2JF  
 Tel: 0113 233 2700  
 Fax: 0113 233 2000  
 www.alstonmurfy.co.uk

Elevations as Proposed

Scale: 1:100 @ A1 Date: July 11  
 Drawn: KP Auth:  
 1535 L [0] 24-26 A



1535 L [0] 26 North West Elevation as Proposed of Day Care Centre