

CUT & FILL ASSESSMENT

- 1. EXISTING GROUND MODEL - 400mm MADEGROUND/TOPSOIL - 2025.09.04
- 2. PROPOSED FORMATION MODEL - 2025.11.26

TOTAL GROSS CUT 5.2m³ FILL 123m³
 NETT: 117.8m³ (FILL)

THE EARTHWORKS CUT AND FILL FIGURES HAVE BEEN CALCULATED BY COMPARING THE EXISTING GROUND LEVELS (MINUS MADEGROUND REMOVAL) WITH THE PROPOSED FORMATION LEVELS.

THE FORMATION DEPTHS USED ARE AS FOLLOWS:

- DEPTH TO FORMATION OF GARDEN = 300mm
- DEPTH TO FORMATION OF SINGLE POROUS DRIVEWAY = 390mm

ARISINGS:

PRIVATE DRAINAGE ARISINGS = 10.4m³

TOPSOIL STRIP/ MADEGROUND REMOVAL:
 ASSUMED TOPSOIL STRIP/ MADEGROUND REMOVAL TAKEN FROM SITE = 400MM (AVERAGE TAKEN FROM TRIAL HOLES DUG FROM S)

ASSESSMENT BOUNDARY TOTAL AREA = 601m²

VOLUME OF TOPSOIL/MADEGROUND GENERATED:
 601m² x 0.4m = 240.4m³

TOPSOIL/MADEGROUND CART-OFF = 240.4m³

NOTES & CONSIDERATIONS:

- NO BULKING FACTOR HAS BEEN APPLIED TO EXCAVATED VOLUMES.
- ALL SUB-SOILS GENERATED IN THIS MODEL HAVE BEEN ASSUMED AS ACCEPTABLE AND RE-USABLE. NO ALLOWANCE HAS BEEN MADE FOR POTENTIAL CONTAMINATION OR MADE-GROUND.
- THIS ASSESSMENT IS FOR WITHIN THE ASSESSMENT BOUNDARY ONLY AND DOES NOT TAKE INTO ACCOUNT ANY WORKS OUTSIDE OF THE ASSESSMENT BOUNDARY LINE DENOTED ON THIS PLAN.

CUT & FILL ASSESSMENT SUMMARY

CUT & FILL COMPARISON BETWEEN GROUND MODELS:
 117.8M³ (FILL)

ARISINGS:
 10.4M³ (CUT)

TOTAL = 107.4M³ (FILL)

TOTAL TOP-SOIL/MADEGROUND EXPORT = 240.4M³

LEGEND

GENERAL

- DEVELOPMENT BOUNDARY
- CUT & FILL BOUNDARY

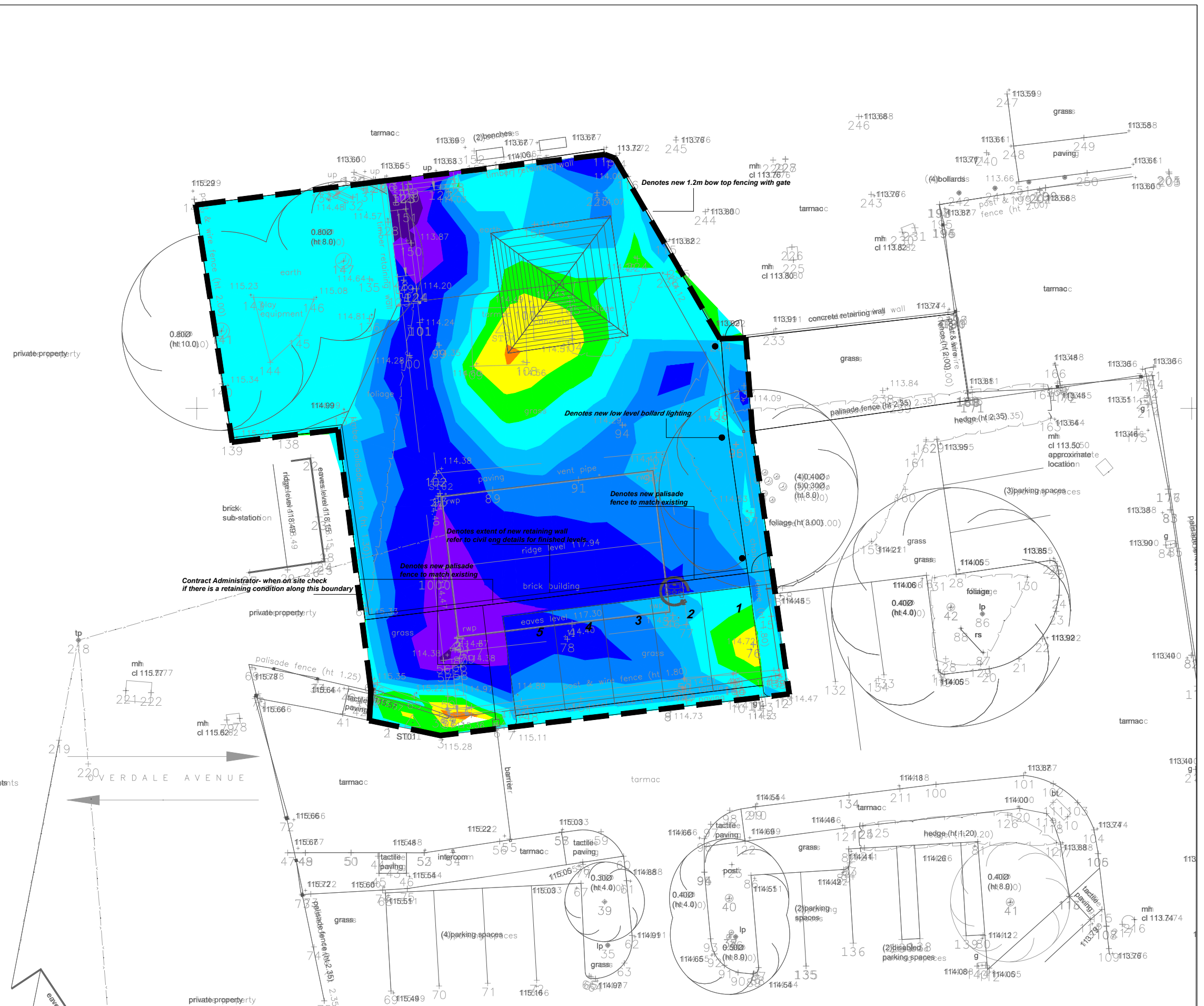
FILL DEPTH BANDS

- BAND 6 = +0.70
- BAND 5 = +0.50 - +0.70
- BAND 4 = +0.30 - +0.50
- BAND 3 = +0.20 - +0.30
- BAND 2 = +0.10 - +0.20
- BAND 1 = 0.00 - +0.10

CUT DEPTH BANDS

- BAND 1 = 0.00 - -0.10
- BAND 2 = -0.20 - -0.30
- BAND 3 = -0.30 - -0.40
- BAND 4 = -0.40

The Contractor is to check and verify in conjunction with the Architects details all setting out points, building and site dimensions, levels and sewer invert levels at connection points and ensure that they are fully conversant with the contents and requirements of the site investigation report before work starts. The Contractor is to comply in all respects with current building legislation, British Standard Specifications, Building Regulations etc., whether or not specifically stated on this drawing.
 This drawing is not intended to show details of ground conditions or ground contaminants. Each area of ground relied upon to support any structure depicted (including drainage) must be investigated by the Contractor any areas of formation for said structures which do not accord with the anticipated conditions as described in the site investigation report are to be immediately notified to the Engineer, where applicable. Any suspect fluid ground or ground contaminants on or within the ground should be further investigated by a suitable expert. Any earthworks shown indicate typical slopes for guidance only and should be investigated further by a suitable geotechnical expert.
 Where existing trees are shown to be retained they should be subject to a full Arboricultural Inspection for safety. All trees are to be planted so as to ensure they are a minimum of 5 metres from buildings and 3 metres from drainage and services, where applicable. A foundation is to be provided to accommodate the proposed tree planting, where applicable.
 © This drawing and the building works depicted are the copyright of Banners Gate Ltd and may not be reproduced or amended except by written permission. No liability will be accepted for amendments made by other persons.



Rev.	Description	Date	By
A	Cut & fill revised to suit inclusion of retaining wall.	26/11/2025	LJ
-	First Issue	05/09/2025	LJ

Client	Bank End Primary School, Barnsley
Project	Bank End Primary School, Barnsley
Title	Volumetric Cut & Fill Analysis Plan
Drawing Status	PLANNING
Drawing	25135-BGC-PL-901 A

Scale	1:200 @ A3
Date	September 2025
Drawn	LJ
Checked	DA
File	25135 / dwgs / civils / current


BANNERS GATE
 CIVIL, STRUCTURAL & ARCHITECTURAL DESIGN SERVICES
 10-11 Birmingham Street, Halesowen, West Midlands B63 3HN
 Tel: 0121 687 1500 Fax: 0121 687 1501
 E-mail: mail@bannersgate.com