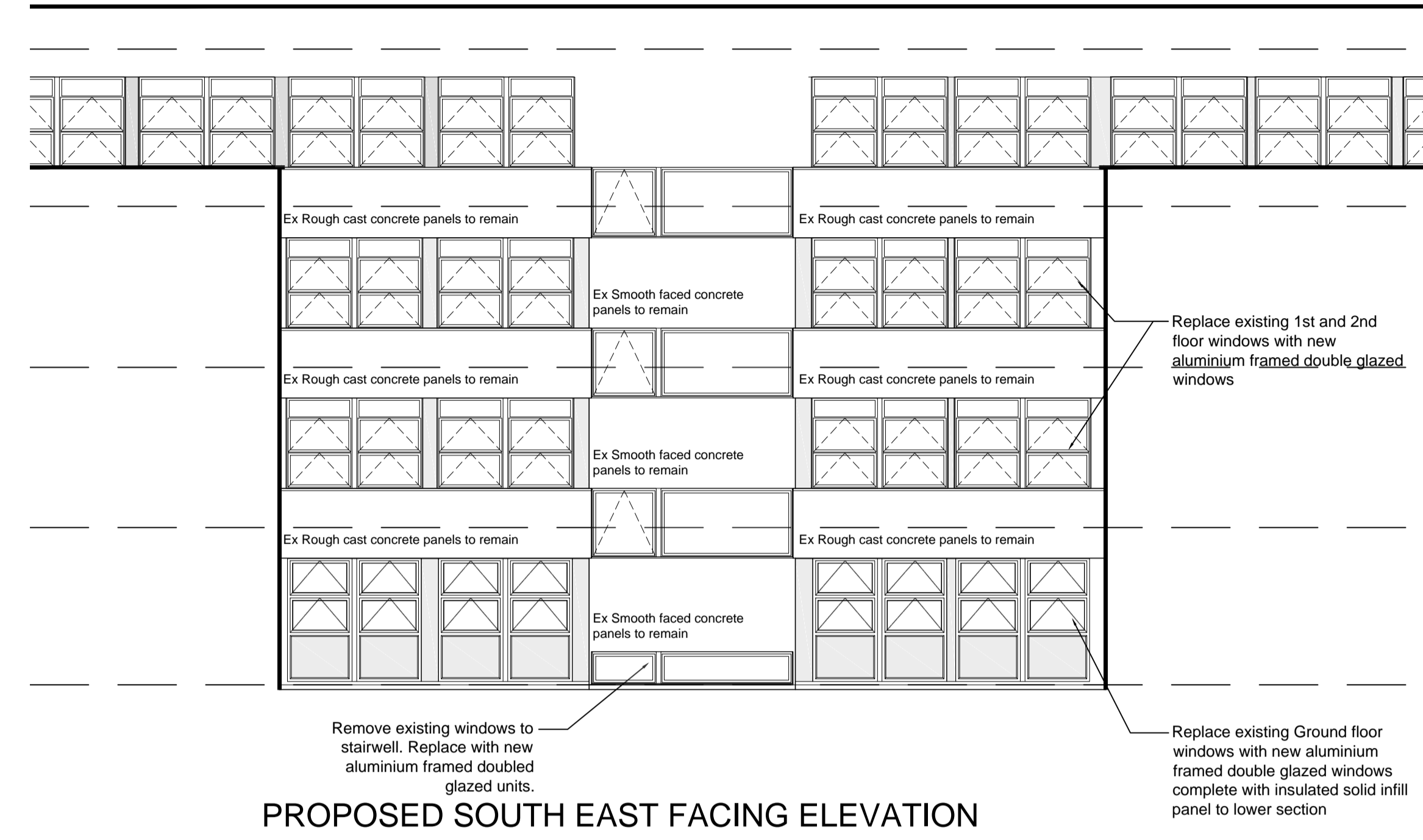
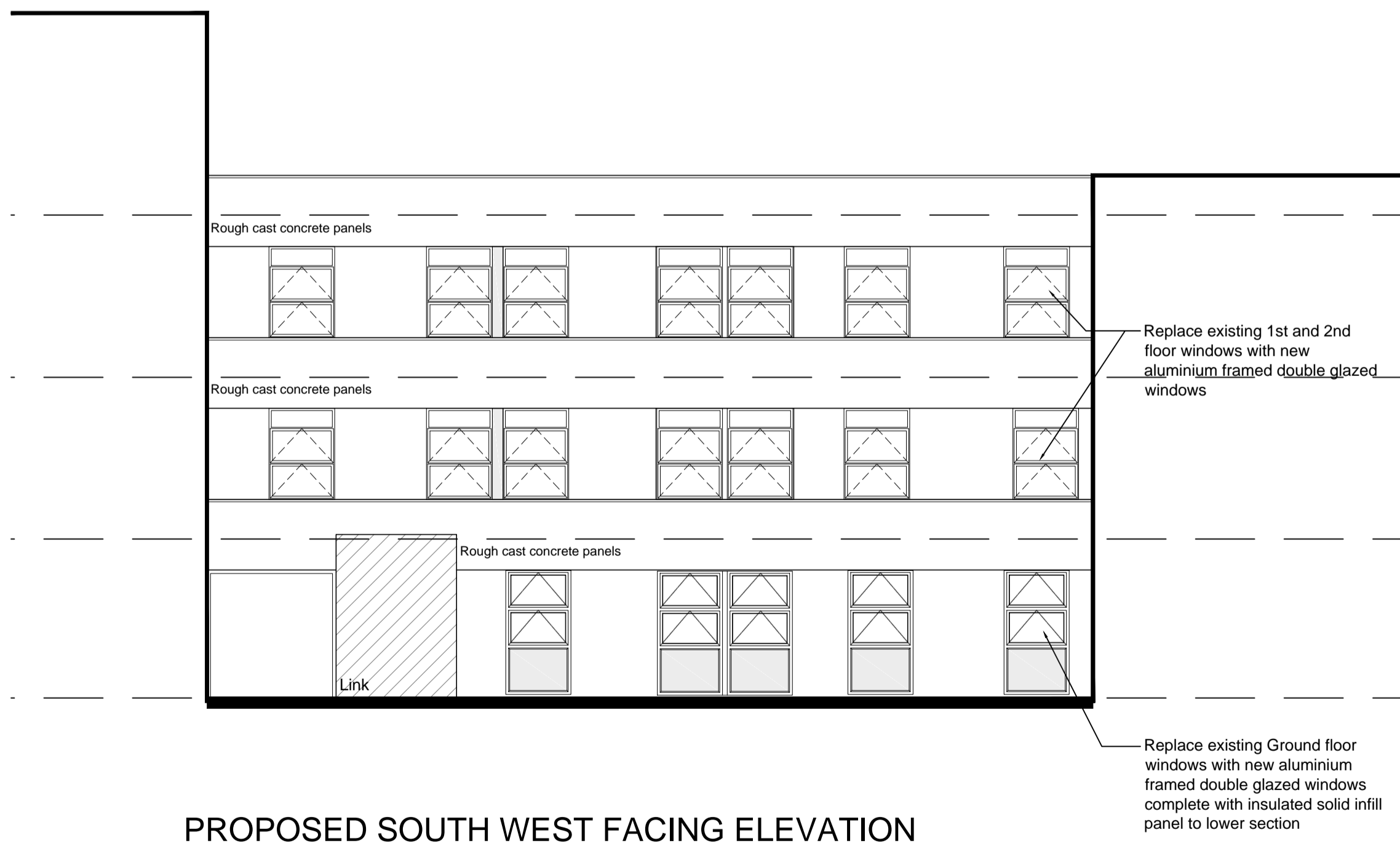


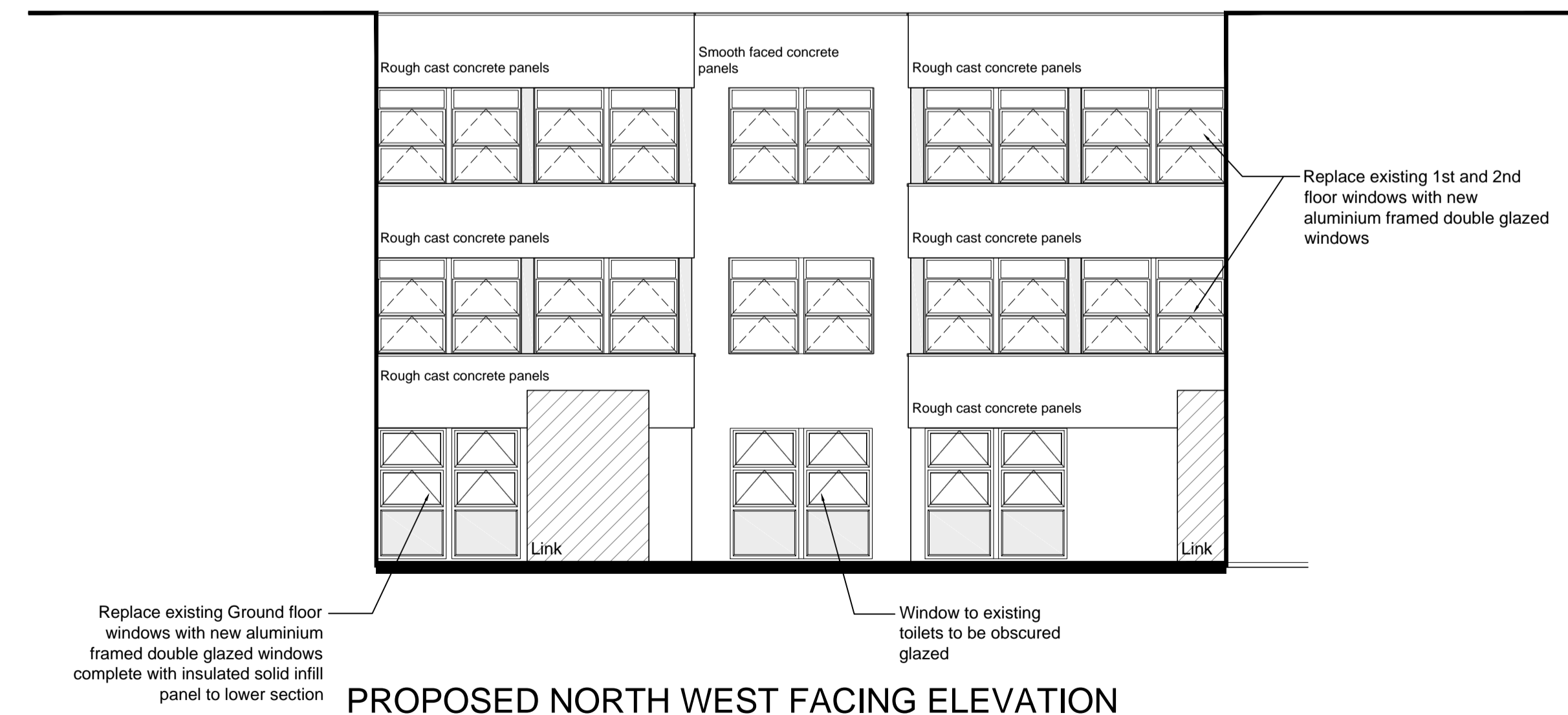
PROPOSED NORTH EAST FACING ELEVATION



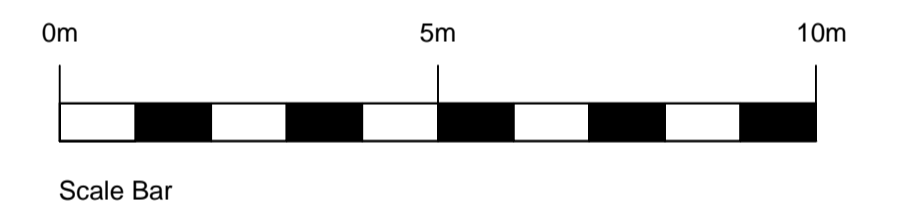
PROPOSED SOUTH EAST FACING ELEVATION



PROPOSED SOUTH WEST FACING ELEVATION



PROPOSED NORTH WEST FACING ELEVATION



- Revisions
- A - 17/10/12 - Proposed window profiles shown
  - B - 05/11/12 - Window/Door Tags Added
  - C - 14/11/12 - Window/Door Tags Removed for Planning
  - D - 22/11/12 - Overhead Panels Removed from Ground Floor Windows
  - E - 29/11/12 - SW Elevation Second Floor Windows S2, S3, S4 Amended

Barnsley NHS Trust

Barnsley Hospital  
 Gawber Road  
 Barnsley

Proposed Window Replacement  
 Maternity Block  
 Proposed Courtyard Elevation

Scale 1:100@A1 / 1:200@A3



15 collegiate crescent  
 sheffield  
 S10 2BA  
 t: 0114 266 3001  
 f: 0114 266 3002

w: www.beaumontandcowling.co.uk  
 e: sheffield@beaumontandcowling.co.uk

Date	No.	Rev.
9.10.12	3305/30	E