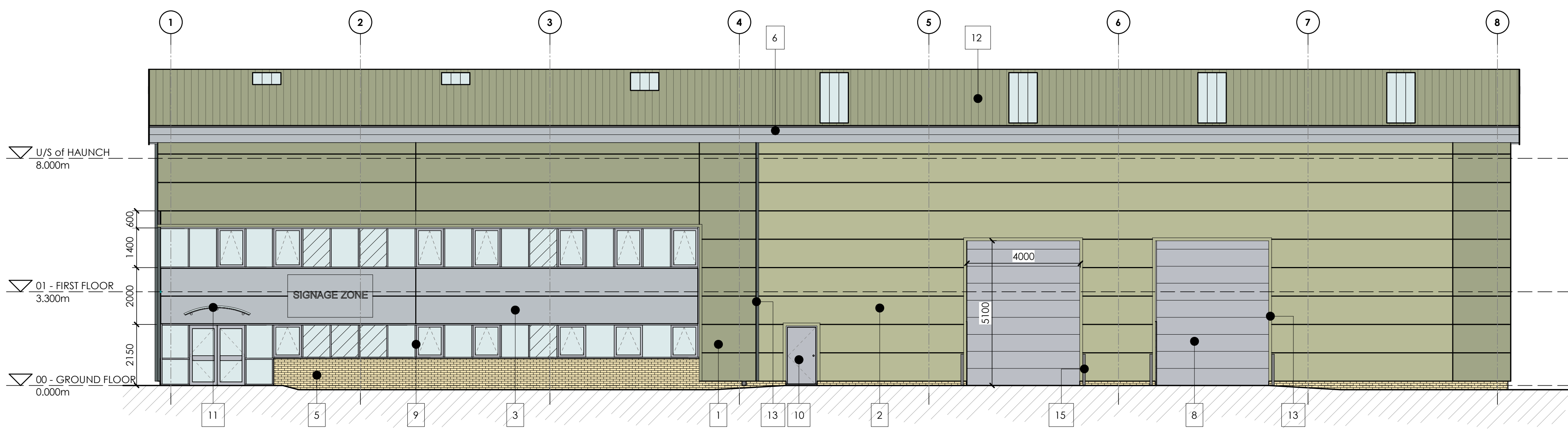
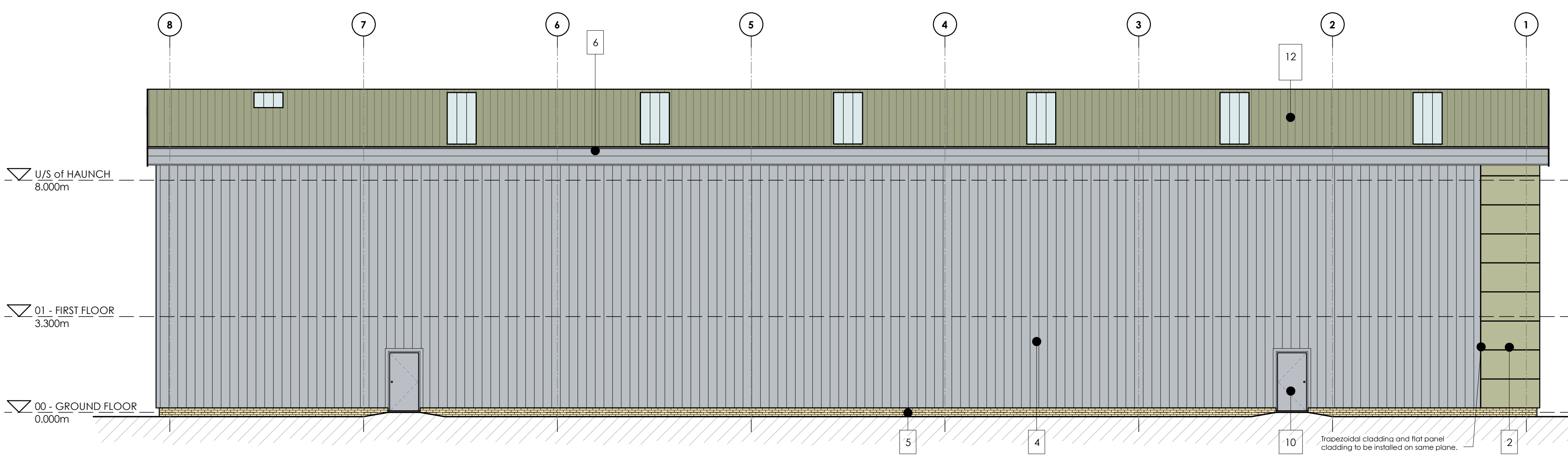


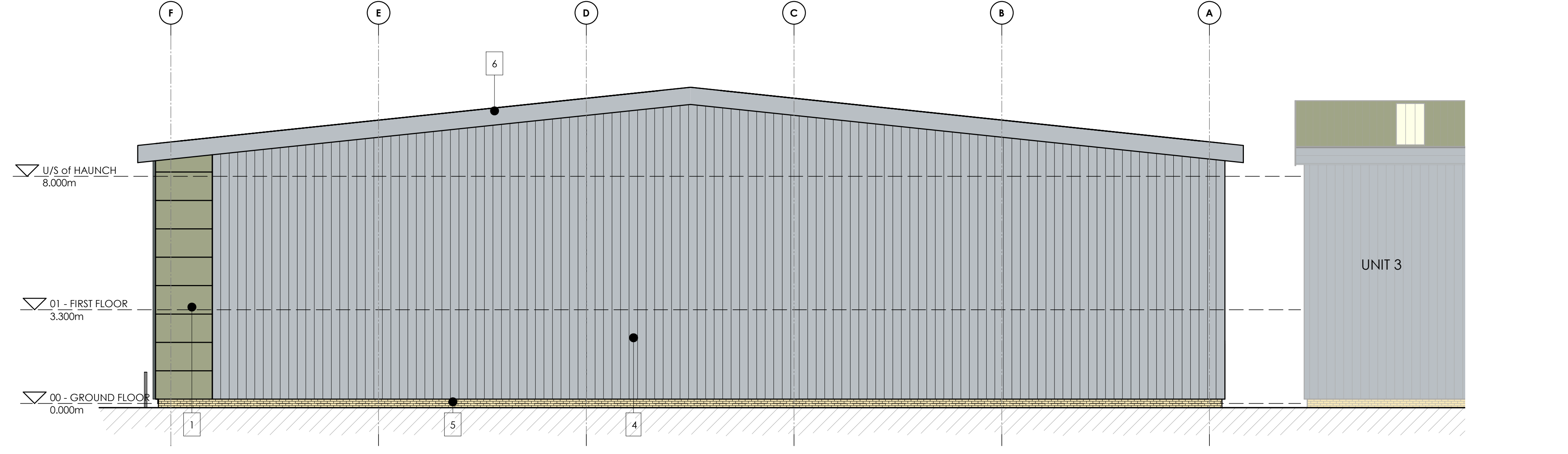
SOUTH EAST ELEVATION
1 : 100



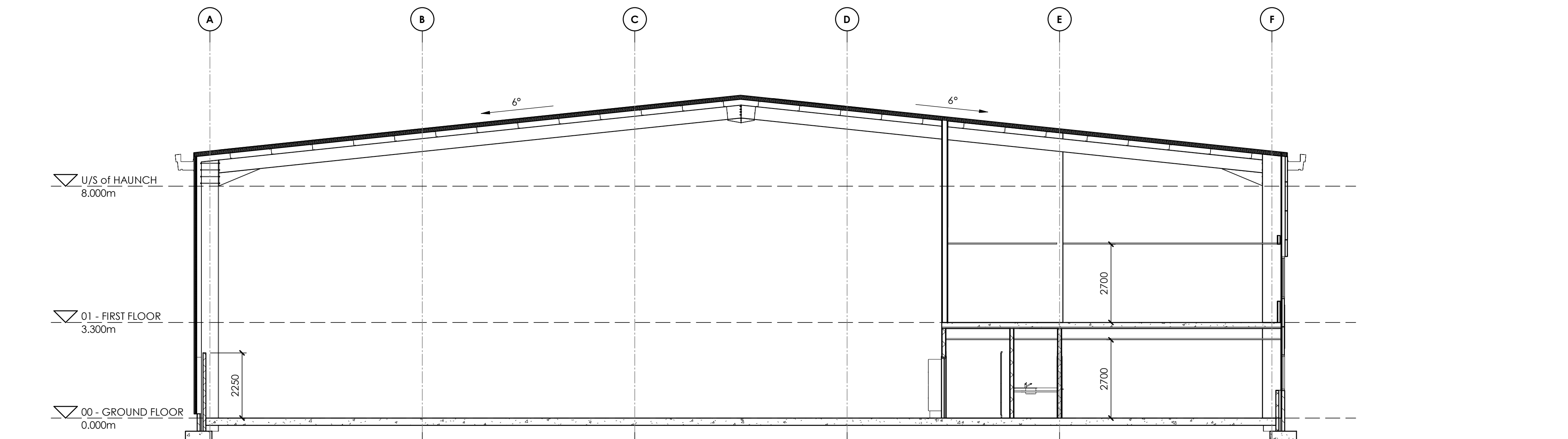
NORTH EAST ELEVATION
1 : 100



SOUTH WEST ELEVATION
1 : 100



NORTH WEST ELEVATION
1 : 100



GA SECTION
1 : 100

KEY	MATERIAL SPECIFICATION	MATERIAL COLOUR	TATA STEEL CODE
1	Tata Trimapanel micro-rib (or similar approved) panel cladding system, with factory finish.	Moorland Green	12821
2	Tata Trimapanel micro-rib (or similar approved) panel cladding system, with factory finish.	Meadowland	12817
3	Tata Trimapanel micro-rib (or similar approved) panel cladding system, with factory finish.	Albatross	18817
4	Tata Trisomet (or similar approved) trapezoidal cladding system, with factory finish.	Albatross	18817
5	Brickwork	Buff Brick + Natural Mortar	N/A
6	PPC aluminium (or similar approved) fascias and soffits	Albatross	18817
7	Factory finished steel feature flashings	Merlin Grey	18825
8	Insulated sectional overhead loading doors, with factory finish.	RAL 9006	N/A
9	PPC aluminium windows/door frames, double glazed with anti-sun glass.	RAL 9006	N/A
10	High security factory finished steel pedestrian doors	RAL 9006	N/A
11	Glass canopy, with painted steel frame	RAL 9006	N/A
12	Tata Trisomet (or similar approved) trapezoidal roof cladding system, with factory finish.	Moorland Green	12821
13	Factory finished steel flashings	To match cladding	N/A
14	Trespa Panelling	Multicoloured	N/A
15	Bollards	Gloss painted steel RAL 9006 with yellow horizontal stripes	N/A

Trespa panelling to be a mix of the following colours:

K37.2.3 Spring Green
A05.1.1 Stone Beige
A35.4.0 Cactus Green
A28.6.2 Mid Green
A05.5.0 Quartz Grey
A08.2.1 mid beige
A03.1.0 pastel grey

Rev	Description	Dm	Vfd	Date
P6	Glazing recess amended to 150mm. Trespa colour added.	SW	✓	19.12.23
P5	Minor amendment	IR	SW	10.07.23
P4	Glazing amended.	IR	SW	29.06.23
P3	1st floor level amended, unit 3 shown for context.	IR	SW	31.05.23
P2	First floor windows amended to have panels above opening lights, 600mm.	IR	SW	16.05.23
P1	Cladding panel removed below window, issued for Planning.	IR	SW	21.04.23

As outlined in section 2.3 of the CIBB Industry Guidance to Designers, significant risks can usually be ignored, as can risks arising from routine construction activities, unless the design compound or significantly alters these risks, in accordance with CDM Regulations 6, 7 and 11. Any significant risks relating to the design features shown on this drawing have been identified and are cancelled here.

☒ No significant risks have been identified.

☐ Significant risks have been identified - refer to notes on drawing for information on residual risks and any controls necessary to be employed.

Refer to the current Designer's Risk Assessment sheets for further details.

Designer's Signature SW Date April'23

Drawing Status **PLANNING**

williamsaunders
architecture : engineering : building consultancy

Newark Beacon
Cafferata Way,
Newark-on-Trent,
Nottinghamshire, NG24 2TN.

Tel: 01636 704361
W: wm-saunders.co.uk

Also at Leeds, Lincoln & Wiltshire

Project
Proposed Development,
Rockingham

Client
Carnell Management Services Ltd.

Title
Unit 4 - Proposed Elevations & GA
Section

WS Project No. 12215 Drawn by IR Date April'23 Scale As indicated @ A0

Drawing/Document Reference
Project Originator Zone Level Type Role Number Status Revision
12215 - WMS - 04 - ZZ - D - A - 10604 - S8 - P6