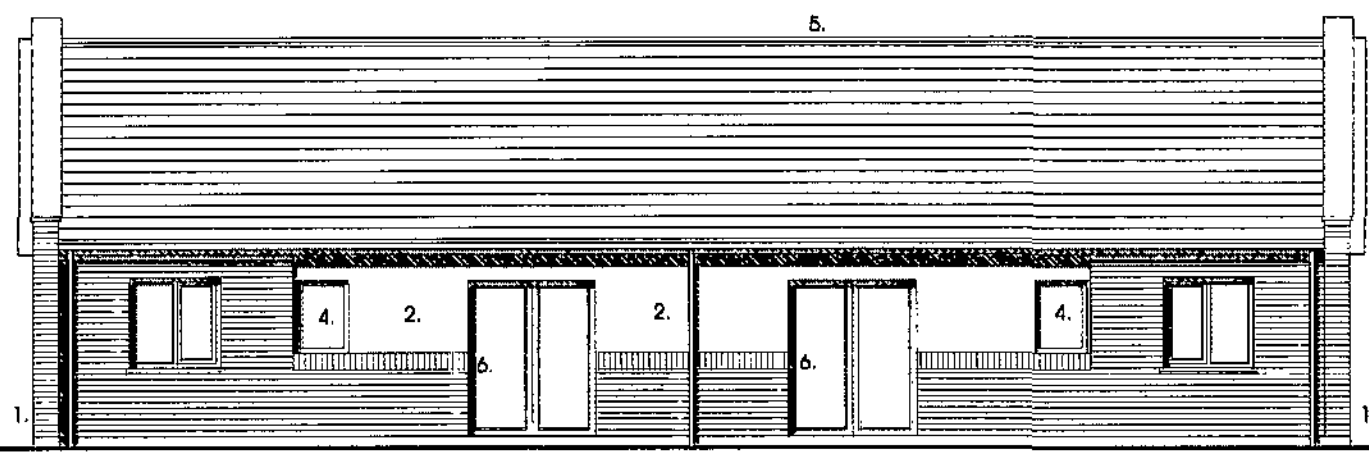
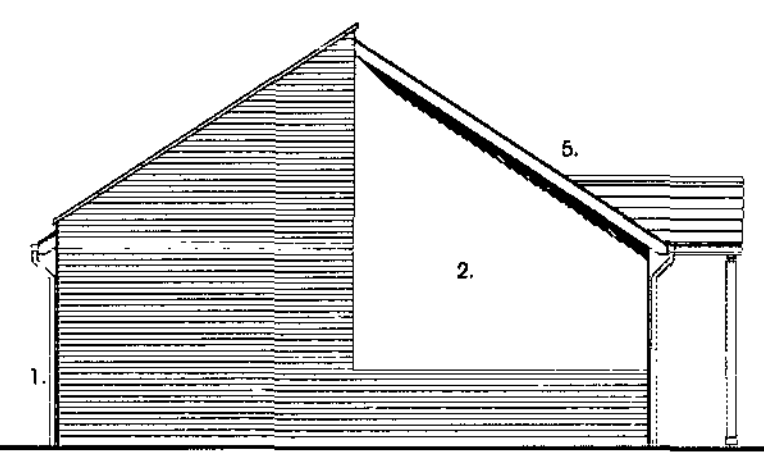


Entrance Elevation
Simple Pitched Roof Option



Rear Elevation



Side Elevation

© Acornfas WSM Architects

The general contractor is responsible for the verification of dimensions on site and the applicant is to be informed of any discrepancy.

The status of information contained in a computer copy of this drawing shall be incorrect that conveyed by the paper copy.

Revisions:

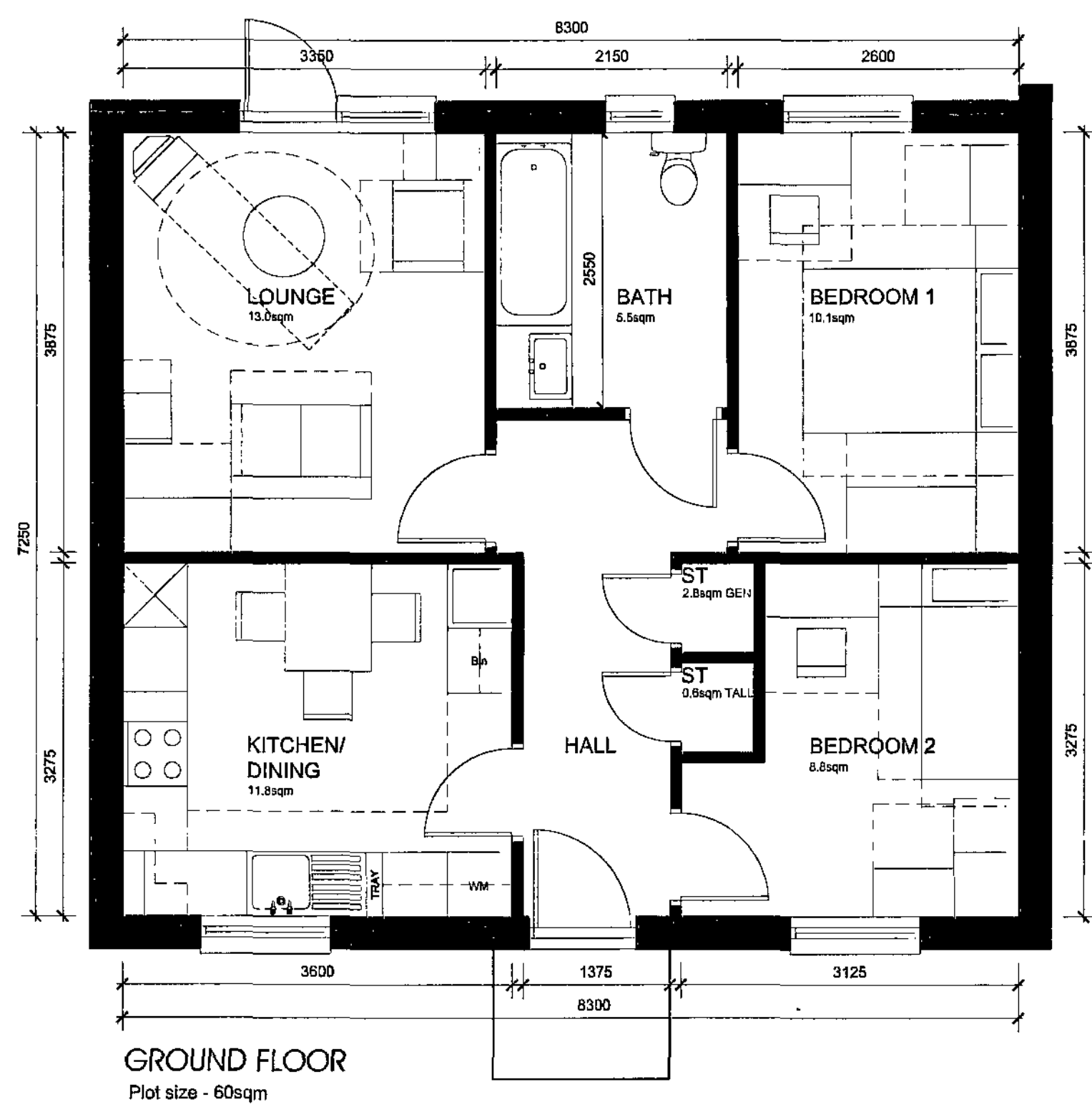
A 29.07.08 RJ
Window size on plan adjusted to correspond with elevations treatment.

B 01.08.08 C ODZ
GK post amended and furniture cleared to suit.

C 25.09.08 C ODZ
GK post amended and furniture cleared to suit.

D 08.12.08 C ODZ
Timber frame boarding on elevations now shown as a Accoent through coloured render system.

E 12.12.08 RJ
Accoent render removed and front door revised to reflect manufacturer's design.



1. Fl. Quality facing brickwork
2. Through coloured render system (ie. Sto / Weber or similar approved)
4. Stained timber framed double glazed windows
5. Interlocking concrete tiled roof
6. Soldier course detail
7. Projecting entrance canopy supported on timber posts
8. Parapet wall with pressed metal capping flashed over from roof.

PLANNING

Barnsley Metropolitan
Borough Council

26 JAN 2009

Corporate Mail Room

Scale: 1:100 / 1:50 @ A2

Date: July 2008

Drawn: RJJ

Eng.No: 2121-015-121E

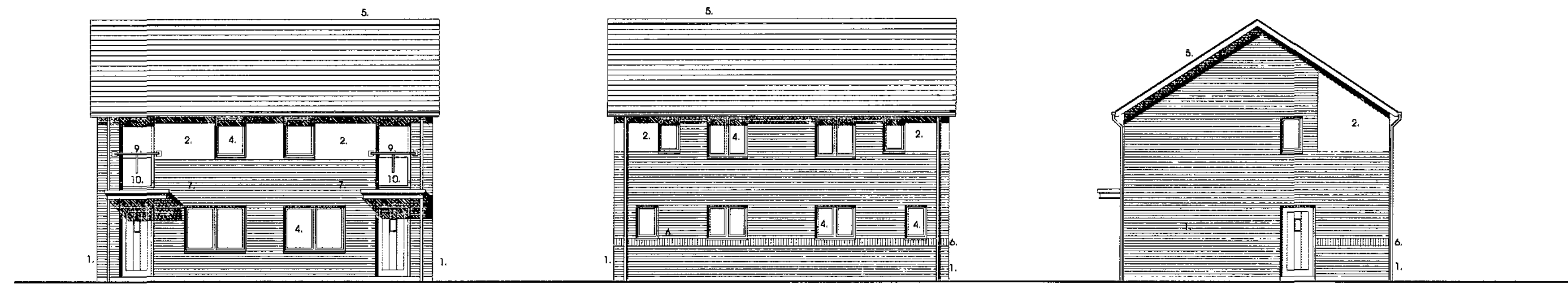
2b3p - Bungalow
New Lodge Crescent, Barnsley
Yorkshire Housing

The general contractor is responsible for the verification of dimensions on site and the architect is to be informed of any discrepancy.

The status of information contained in a computer copy of this drawing shall be limited to that conveyed by the paper copy.

Revisions:

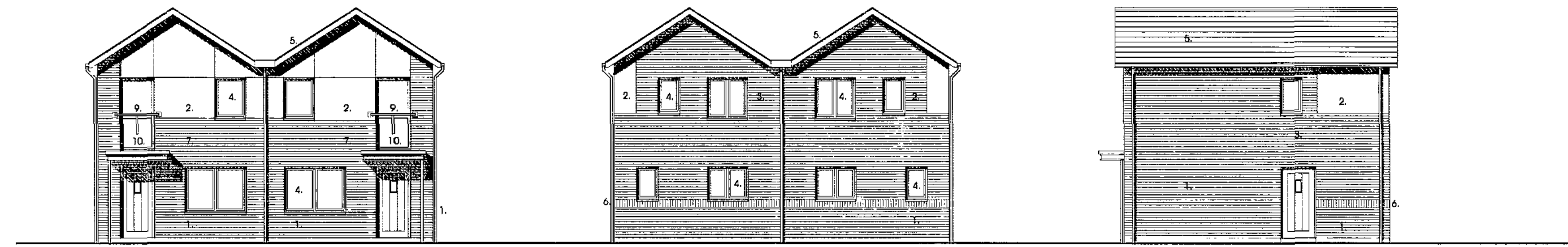
- A. 01.08.08 C.0007 BA plan amended and furniture added to all
- B. 26.09.08 C.0007 BA plan amended and furniture added to all
- C. 07.10.08 C.0007 Canopy amended
- D. 08.12.08 C.0007 Timber PVC boarding on elevations now shown as to appear through coloured render system
- E. 12.12.08 RJJ Access through coloured render system removed. Frame of balcony to render. Insulated doors added in line with manufacturer's model
- F. 22.12.08 RJJ Rerendered area reduced and amount of balcony increased
- G. 24.12.08 RJJ Rerender moved away from edge of window opening



Entrance Elevation
Simple Pitched Roof Option

Rear Elevation

Side Elevation

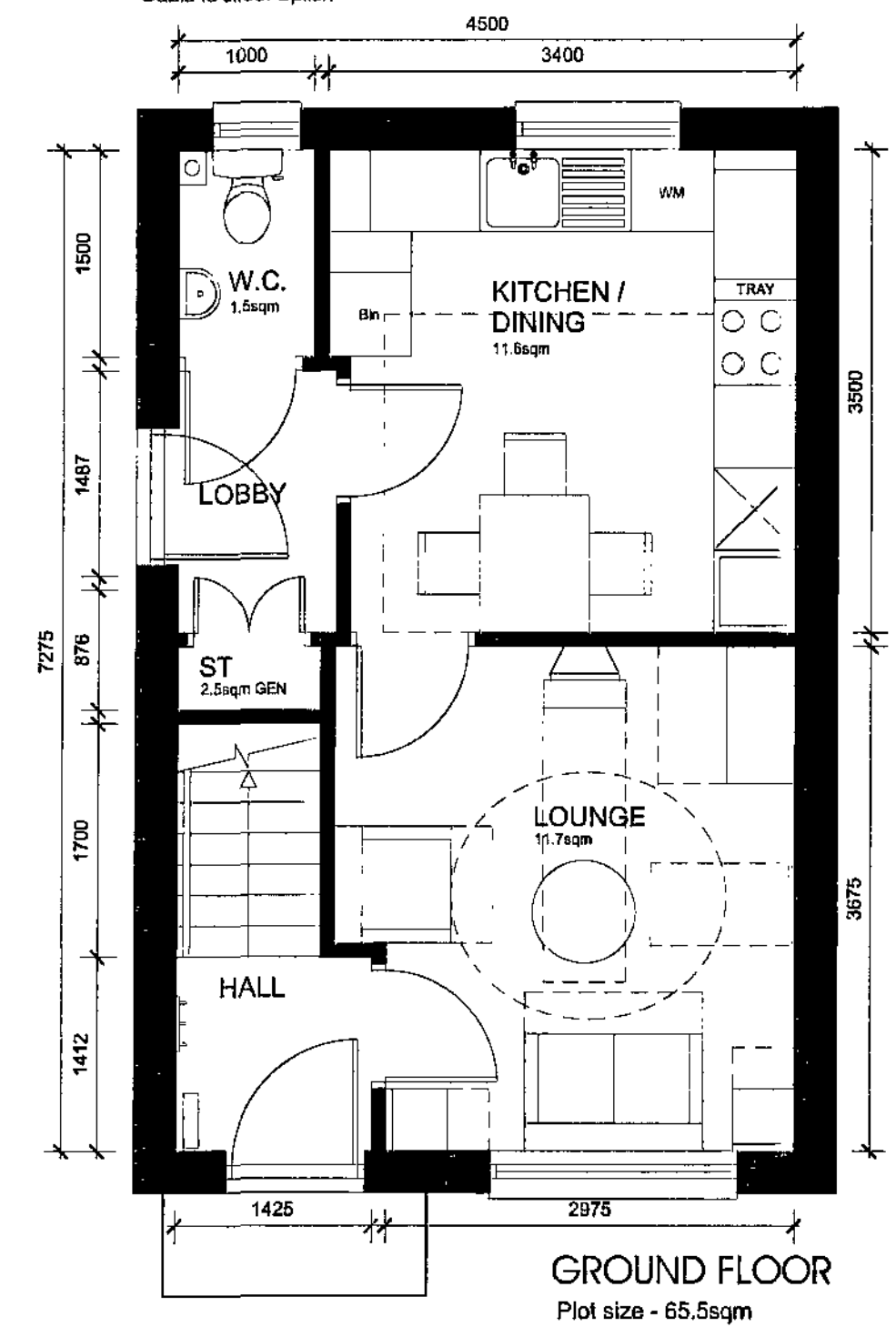


Entrance Elevation
Gable to Street Option

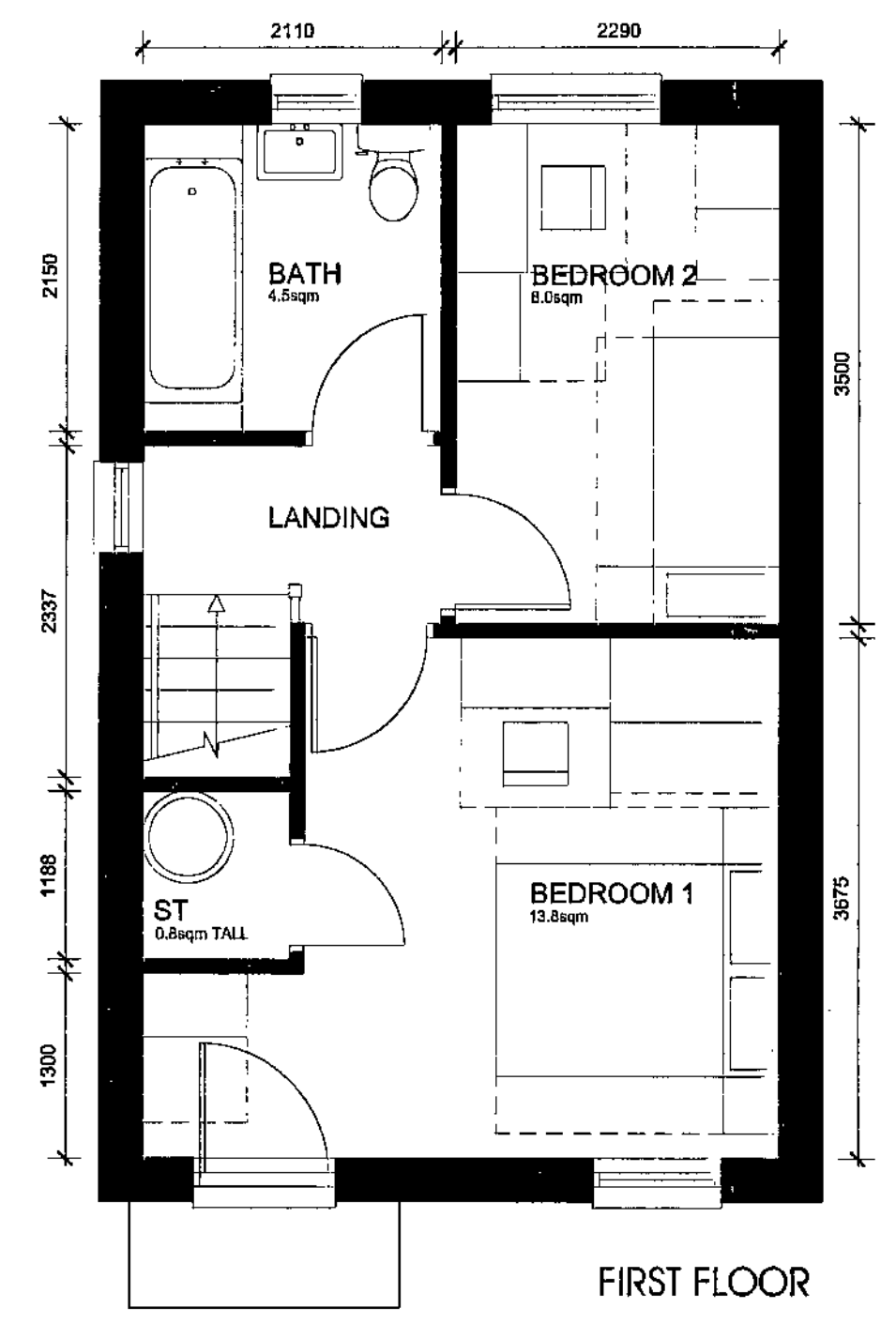
Rear Elevation

Side Elevation

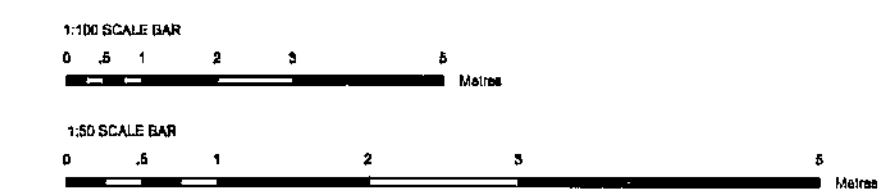
1. Fl. Quality facing brickwork
2. Through coloured render system (ie. Sto / Weber or similar approved)
3. Stained timber framed double glazed windows
4. interlocking concrete tiled roof
5. inflooding concrete tiled roof
6. Soldier course detail
7. Projecting entrance canopy with pressed metal colourcoated edge detail
8. Parapet wall with pressed metal capping flashed over from roof.
9. galvanized steel balustrade
10. colourcoated pressed metal panel



GROUND FLOOR
Plot size - 65.5sqm



FIRST FLOOR



PLANNING

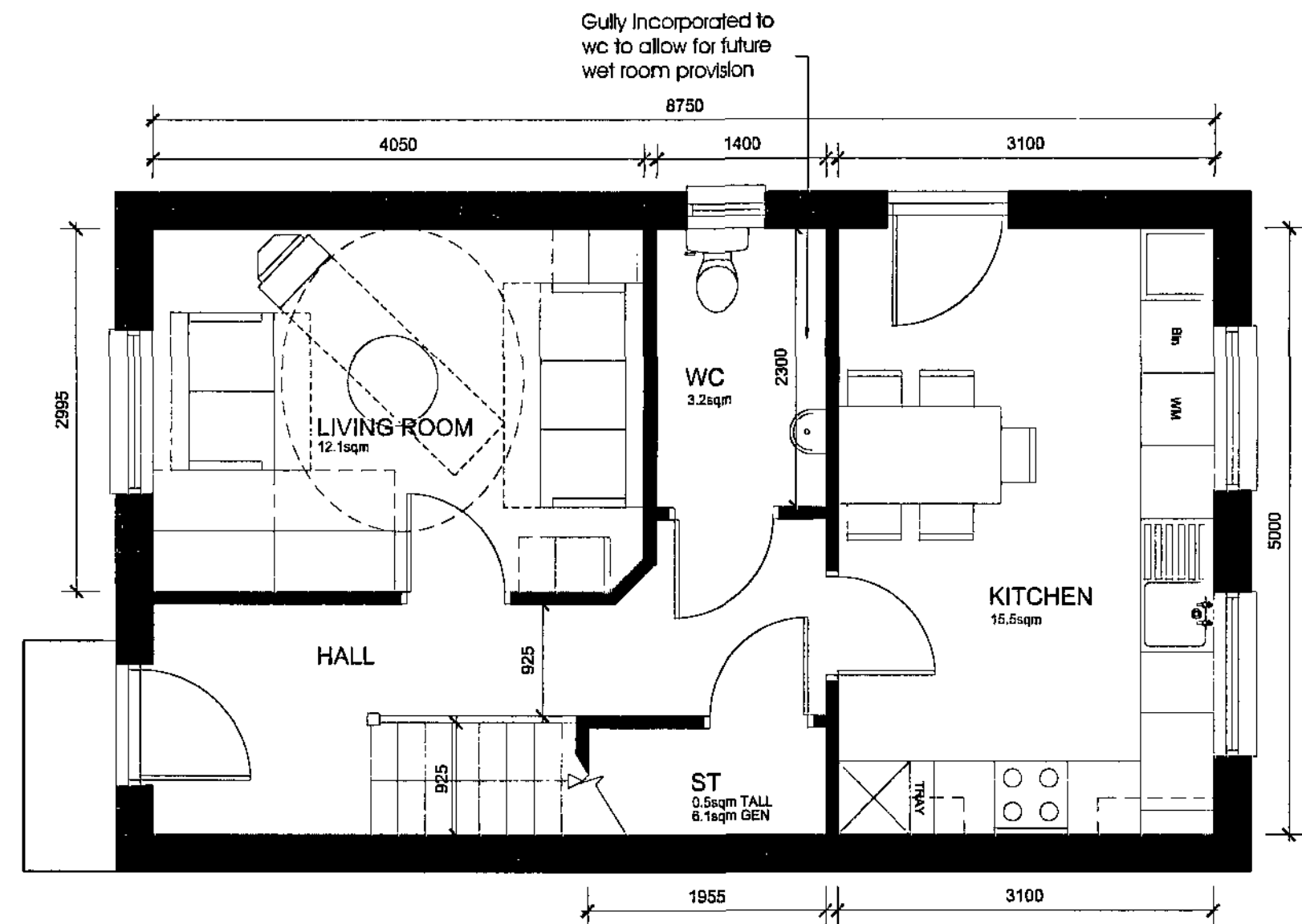
Barnsley Metropolitan
Borough Council
26 JAN 2009
Corporate Mail Room



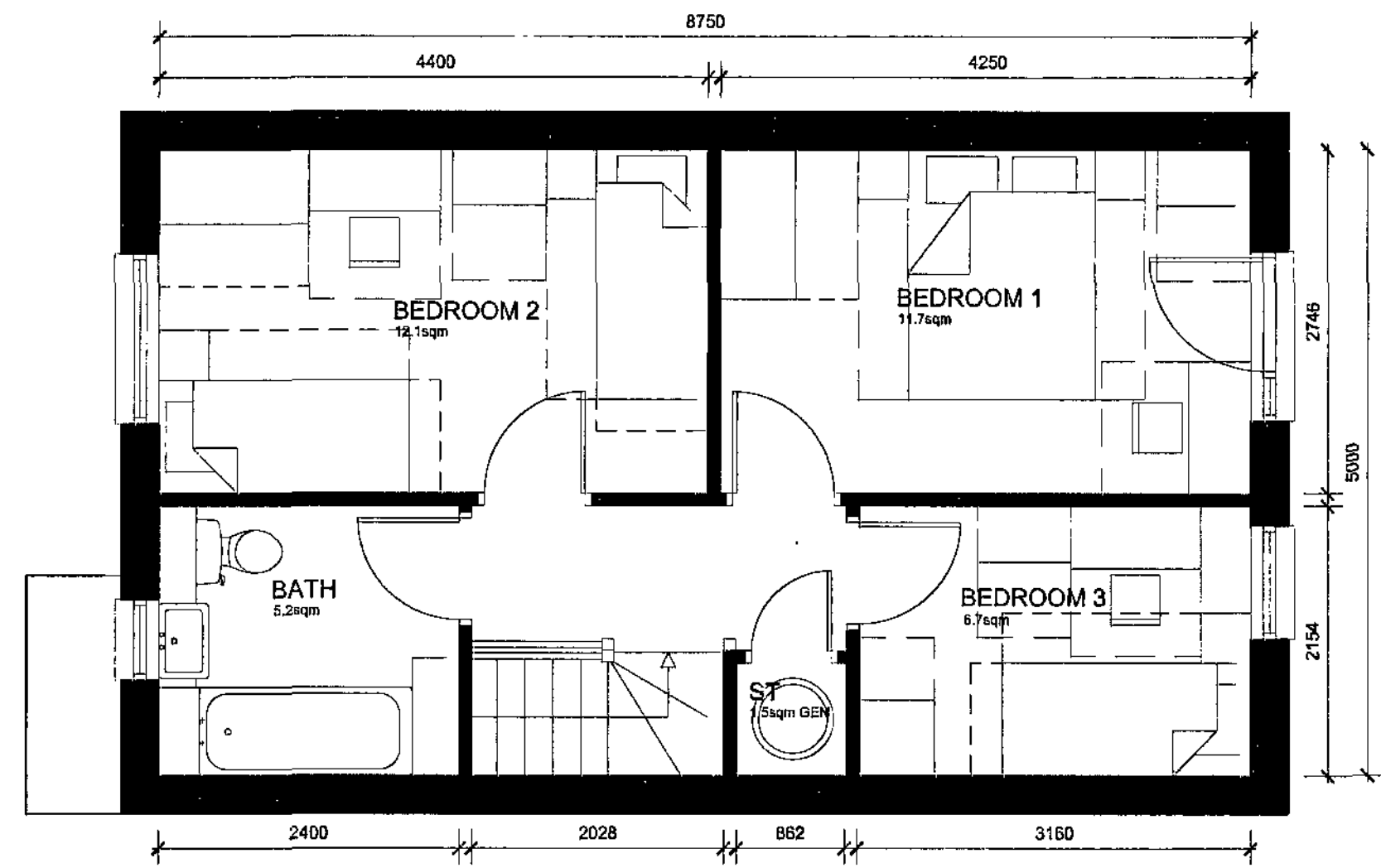
Scale 1:100/1:50 @ A2
Date July 2008
Drawn RJJ
Drawn 2121-015-122G



2b3p - 2 Storey
New Lodge Crescent, Barnsley
Yorkshire Housing



GROUND FLOOR
Plot size - 87.5sqm



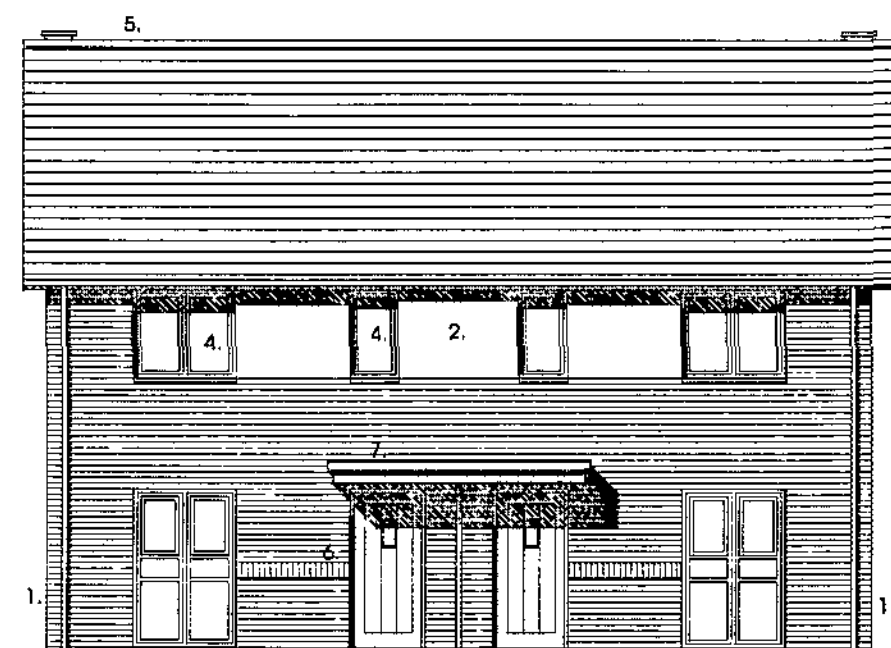
FIRST FLOOR

©Acanthus WSM Architects

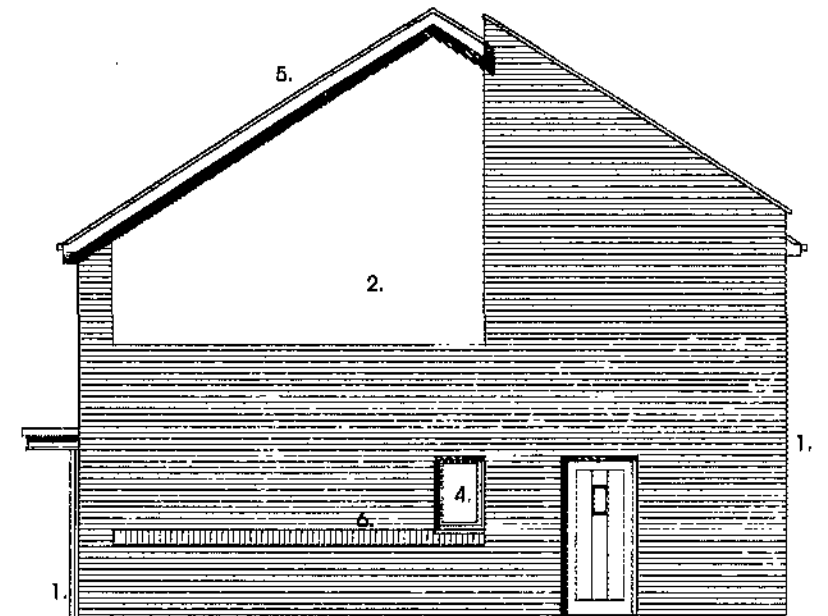
The general contractor is responsible for the verification of dimensions on site and the architect is to be informed of any discrepancy.

The status of information contained in a computer copy of this drawing shall be limited to that conveyed by the paper copy.

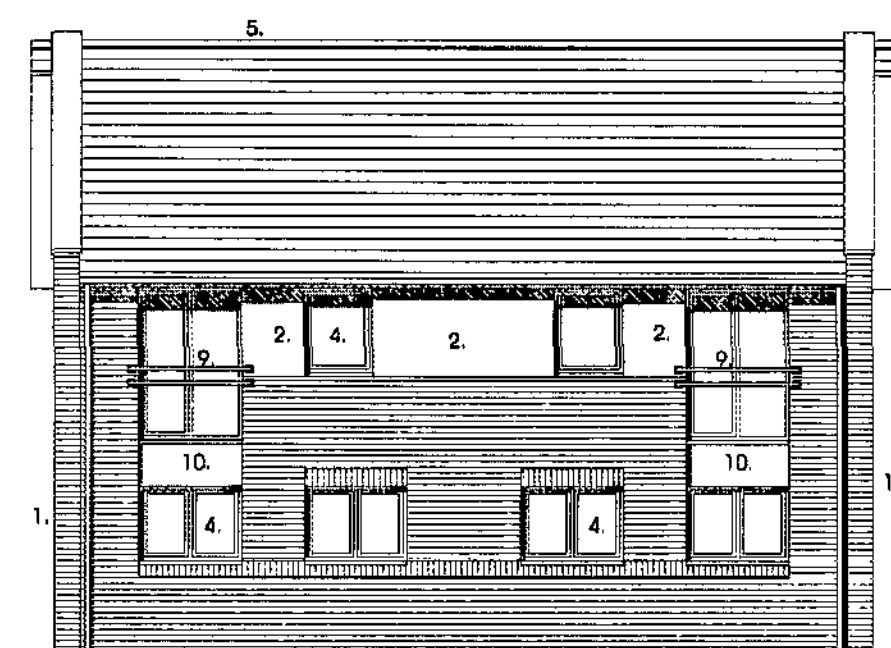
- Revisions
- A. 01.08.08 C.O.D.W. GA plan amended and furniture added to lift
 - B. 25.09.08 C.O.D.W. GA plan amended and furniture added to lift
 - C. 07.10.08 C.O.D.W. Canopy amended
 - D. 08.12.08 C.O.D.W. Timber PMV boarding on elevation, now shown as a render through coloured render system.
 - E. 12.12.08 RJJ Accent through coloured render system removed. Doors adjusted in line with manufacturer's system.
 - F. 22.12.08 RJJ Rendered area reduced and amount of brickwork increased
 - G. 24.12.08 RJJ Rendered area to gable amplified.



Entrance Elevation
Simple Pitched Roof Option

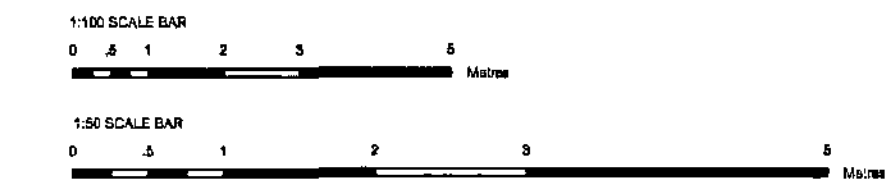


Side Elevation

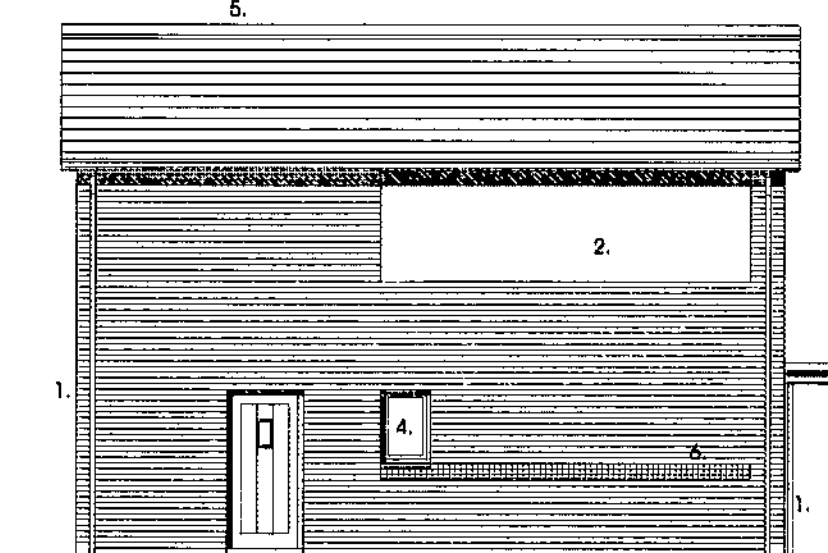


Rear Elevation

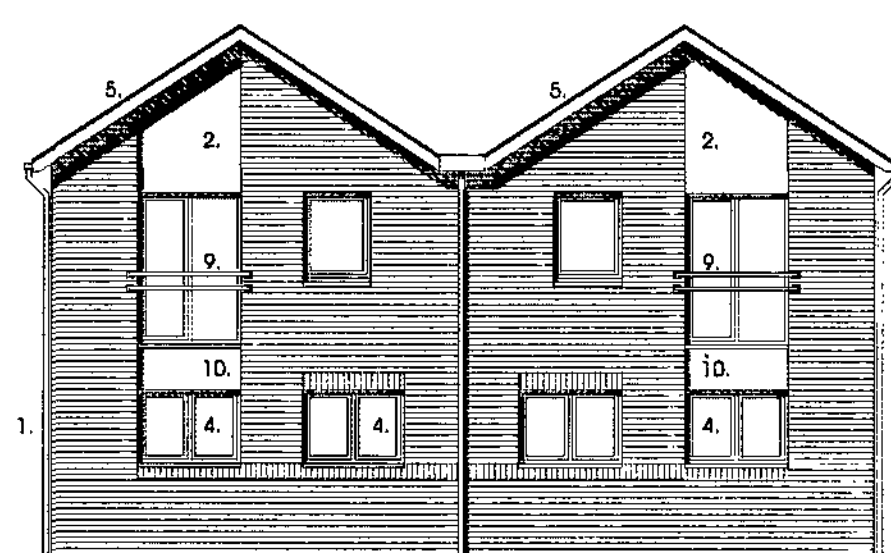
1. F. Quality facing brickwork
2. Through coloured render system (ie. Sto / Weber or similar approved)
4. Stained timber framed double glazed windows
5. Interlocking concrete tiled roof
6. Soldier course detail
7. Projecting entrance canopy with pressed metal colourcoated edge detail
8. Parapet wall with pressed metal coping flashed over from roof.
9. galvanized steel balustrade
10. colourcoated pressed metal panel



Entrance Elevation
Gable to Street Option



Side Elevation



Rear Elevation

PLANNING

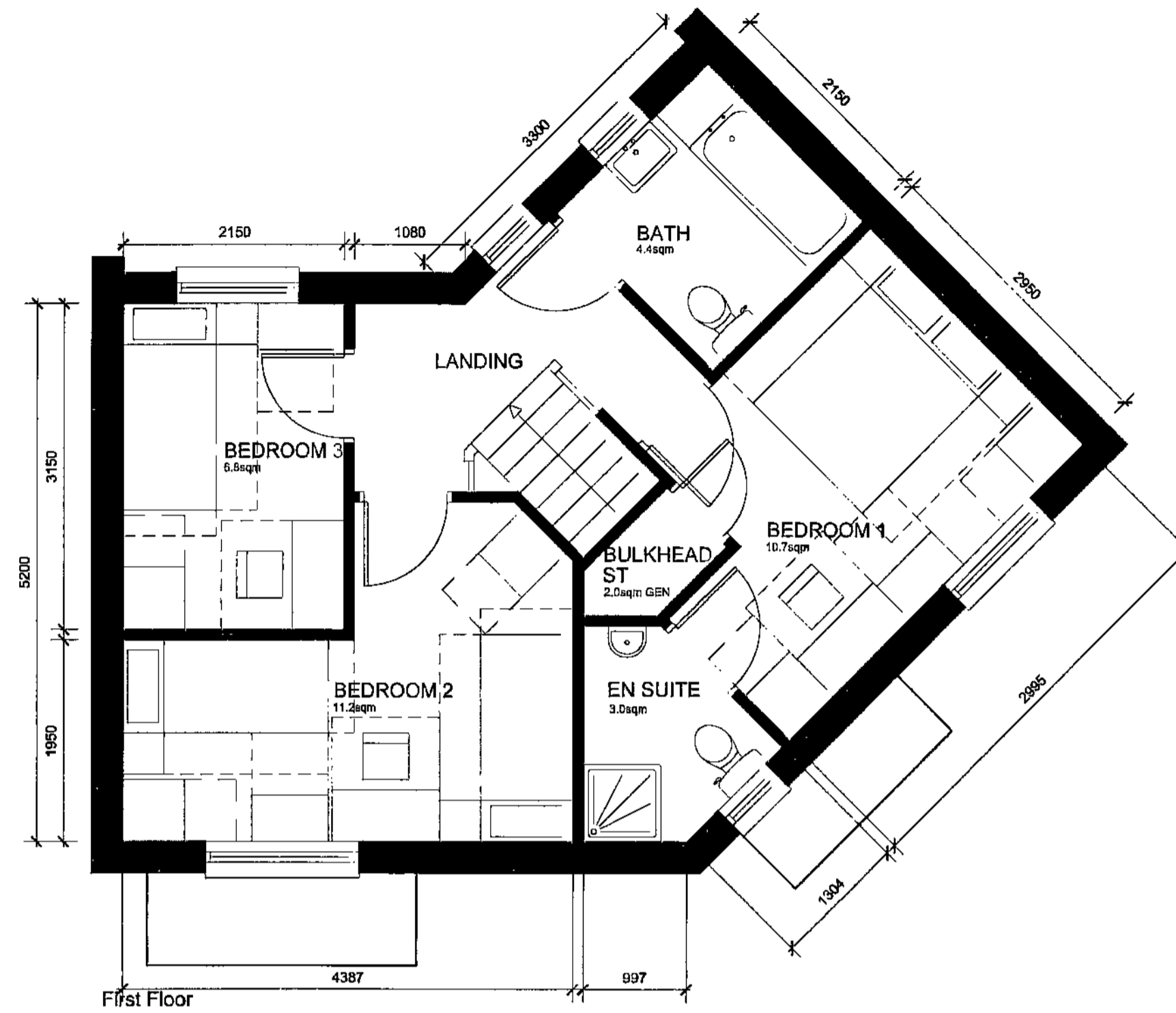
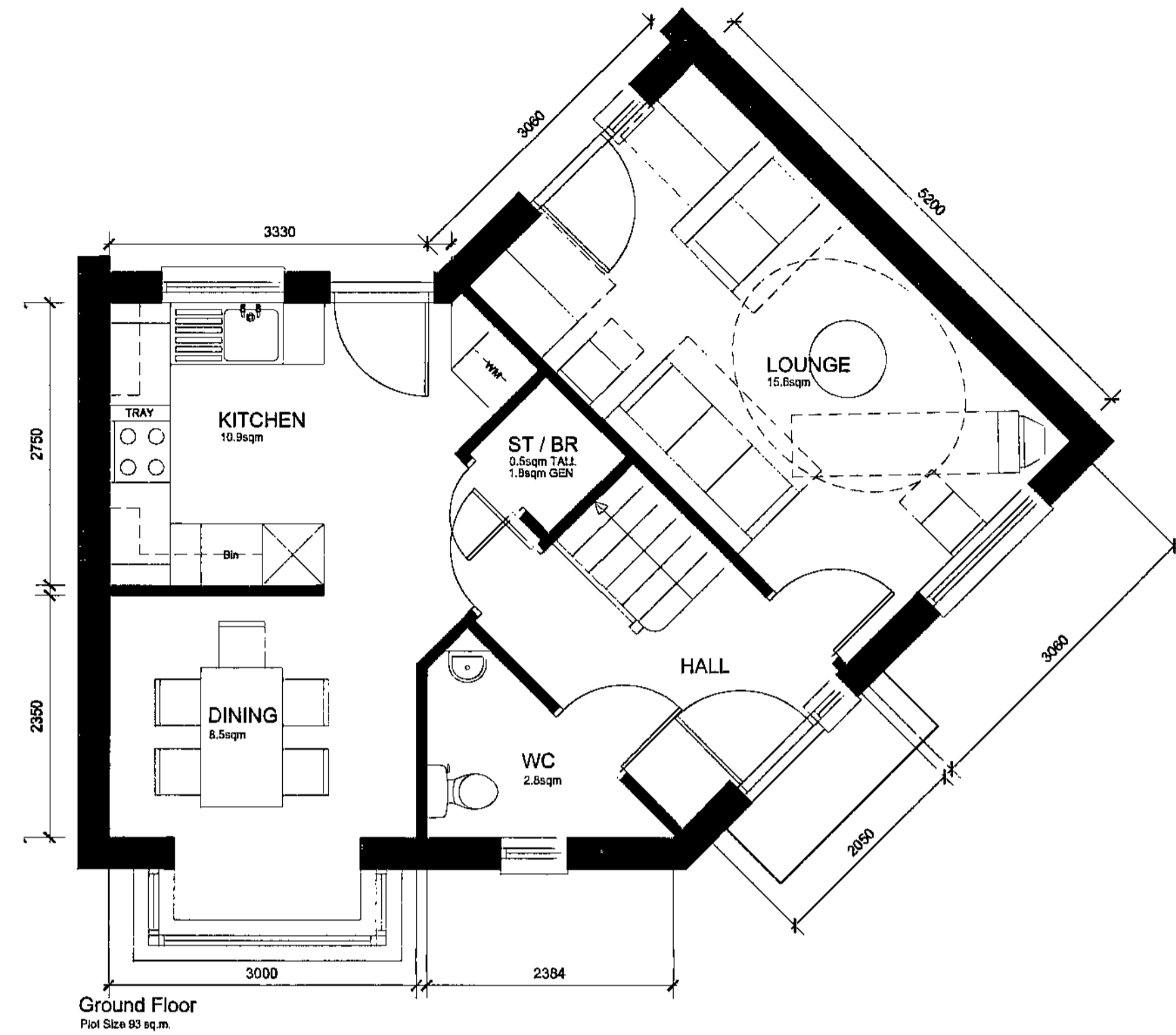
Barnsley Metropolitan
Borough Council
26 JAN 2004
Corporate Mail Room

YORKSHIRE HOUSING

Scale: 1:100 / 1:50 @ A2
Date: July 2008
Drawn: RJJ
Design: 2121-015-1235

3b5p - 2 Storey
New Lodge Crescent, Barnsley
Yorkshire Housing

WSM ARCHITECTS



© Acanthus WSM Architects

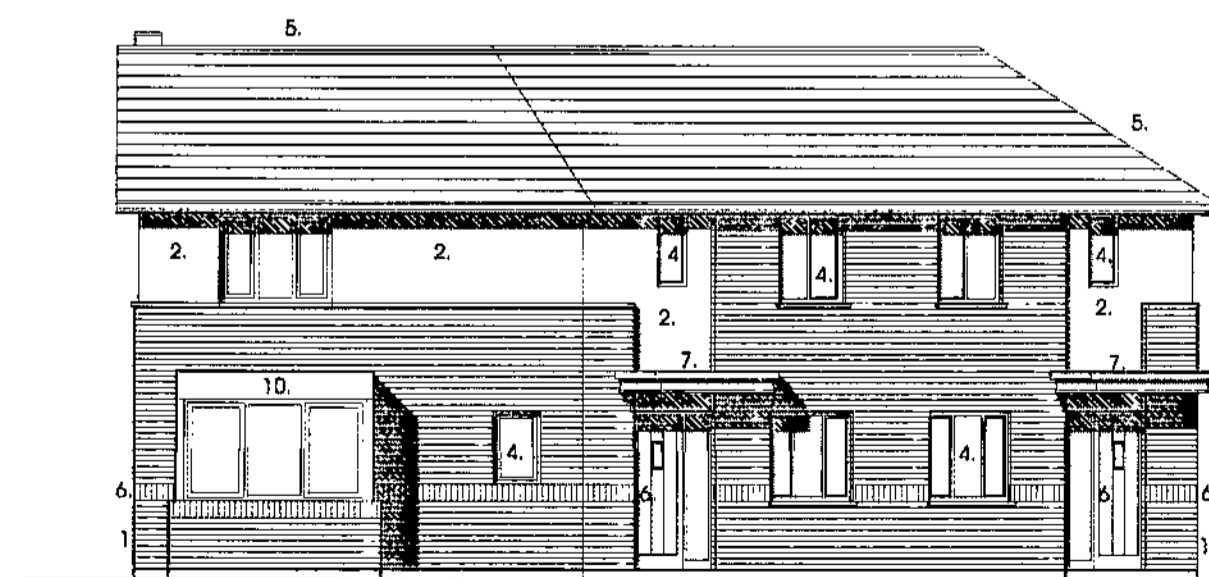
The general contractor is responsible for the verification of dimensions on site and the architect is to be informed of any discrepancy.

The status of information contained in a computer copy of the drawing shall be limited to that conveyed by the paper copy.

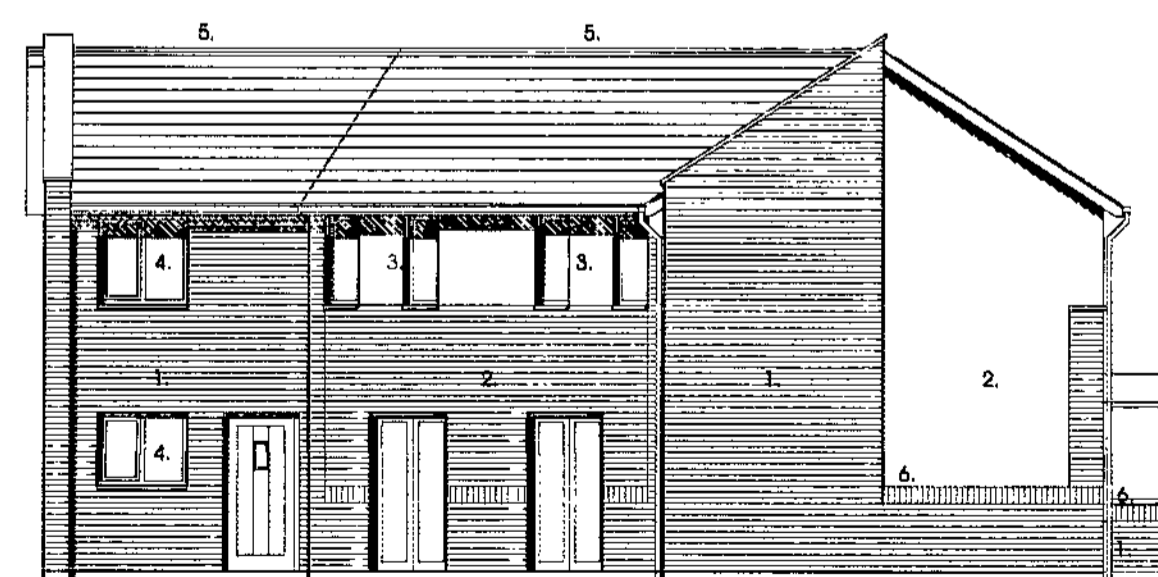
Revisions:

- A. 25.07.08 CO Kitchen Dining layout revised and an suite added
- B. 25.07.08 CO Window arrangement adjusted to accommodate internal furniture layout more effectively
- C. 01.08.08 C.O.D.D.P. Sit plan amended and furniture allowed to aff.
- D. 25.07.08 C.O.D.D.P. Sit plan amended and furniture allowed to aff.
- E. 07.10.08 C.O.D.D.P. Canopy amended
- F. 08.12.08 C.O.D.D.P. Timber PMU boarding on elevations now shown as a Accent through coloured render system.
- G. 12.12.08 RJJ Accent through coloured render system removed. Ratio of balustrade to render increased. Doors adjusted in line with manufacturer arrangement.

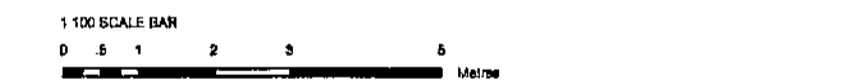
1. Fl. Quality facing brickwork
2. Through coloured render system (ie. Sto / Weber or similar approved)
4. Stained timber framed double glazed windows
5. Interlocking concrete tiled roof
6. Soldier course detail
7. Projecting entrance canopy with pressed metal colourcoated edge detail
8. Parapet wall with pressed metal capping flashed over from roof.
9. galvanized steel balustrade
10. colourcoated pressed metal panel



Entrance Elevation / side



Rear Elevation / gable elevation



Barnsley Metropolitan
Borough Council
26 JAN 2009
Corporate Mail Room

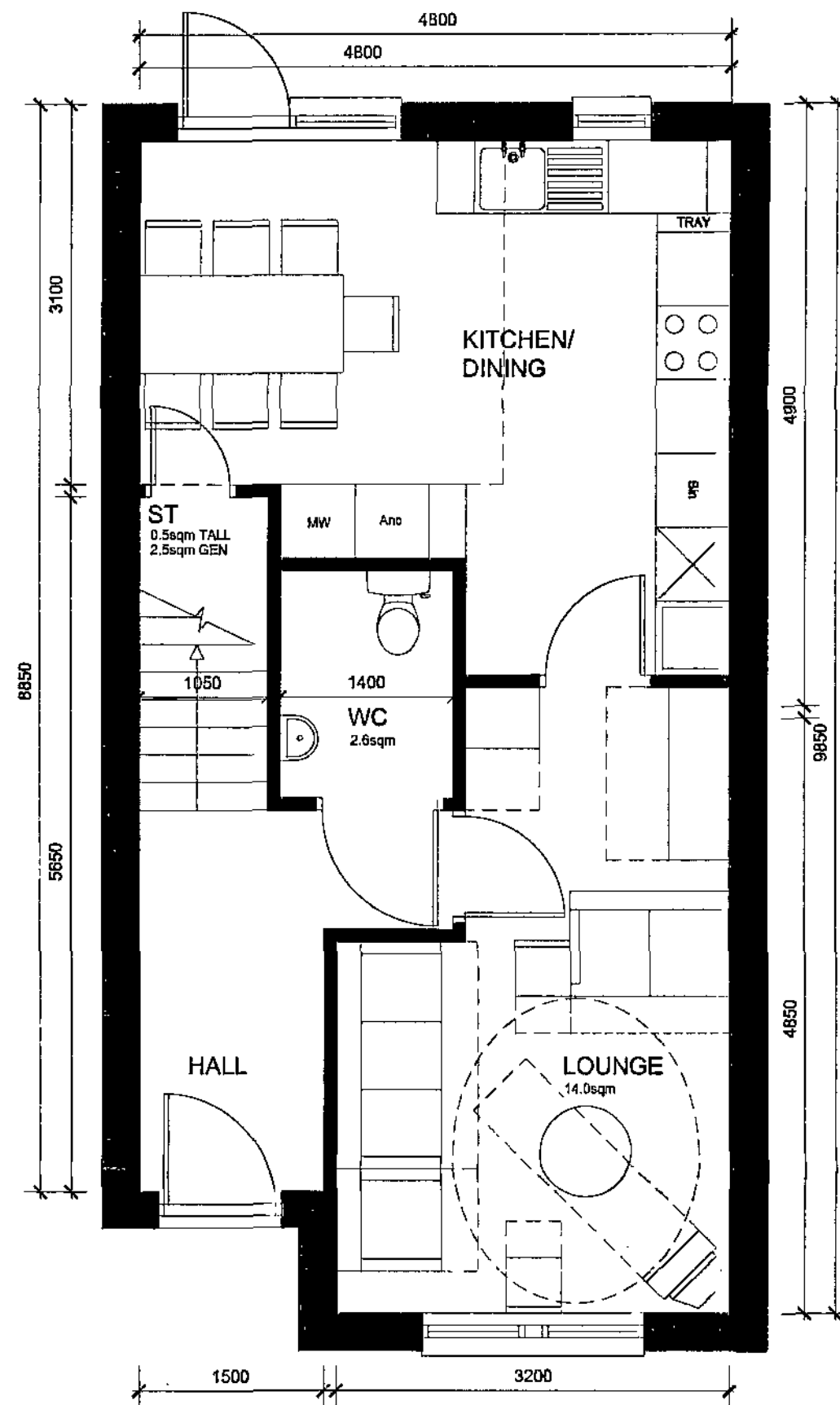


Scale 1:100/ 1:50 @ a2
Date July 2008
Drawn RJJ
Drawn 2121-016-1246

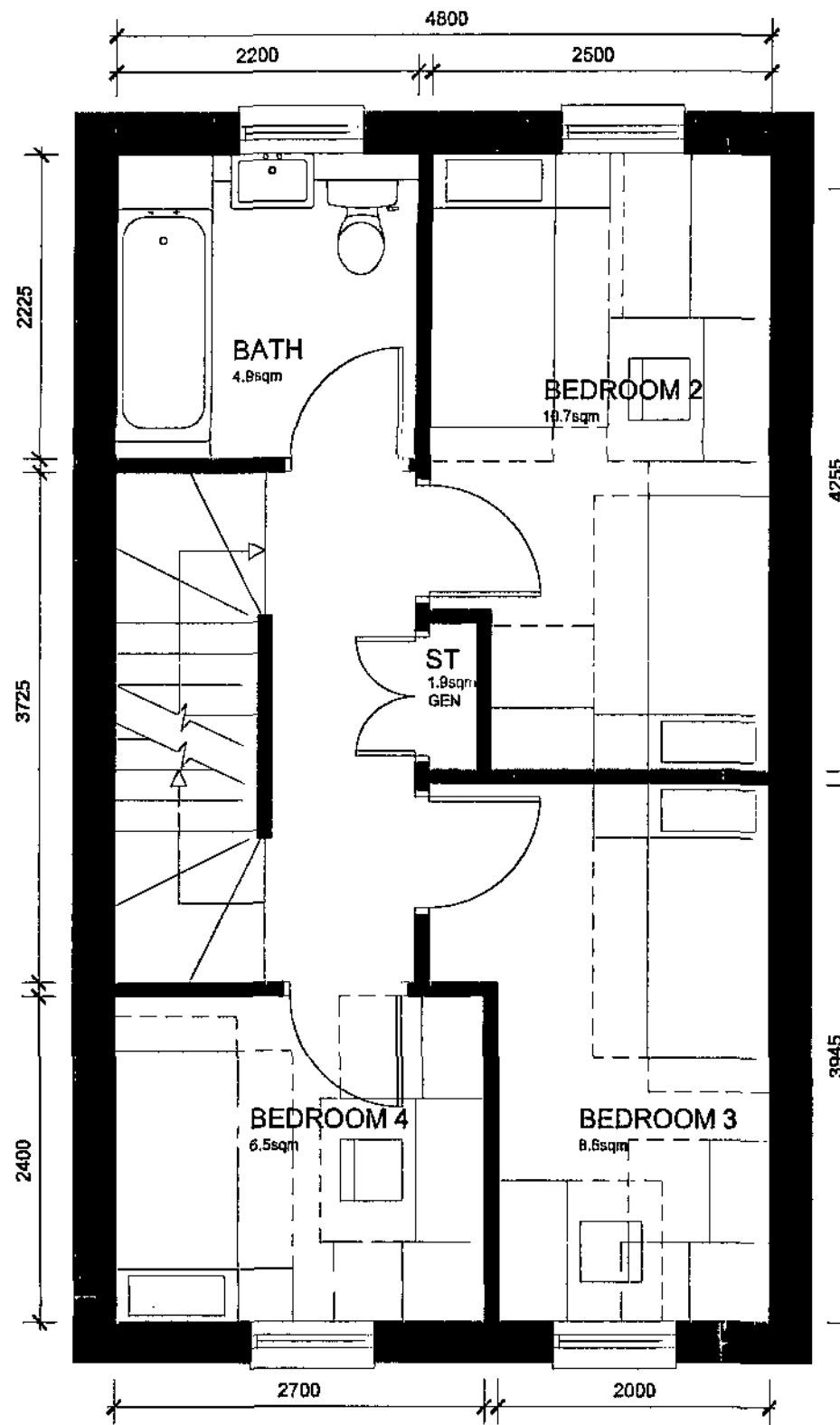
PLANNING

3b5p - Corner Unit
New Lodge Crescent, Barnsley
Yorkshire Housing

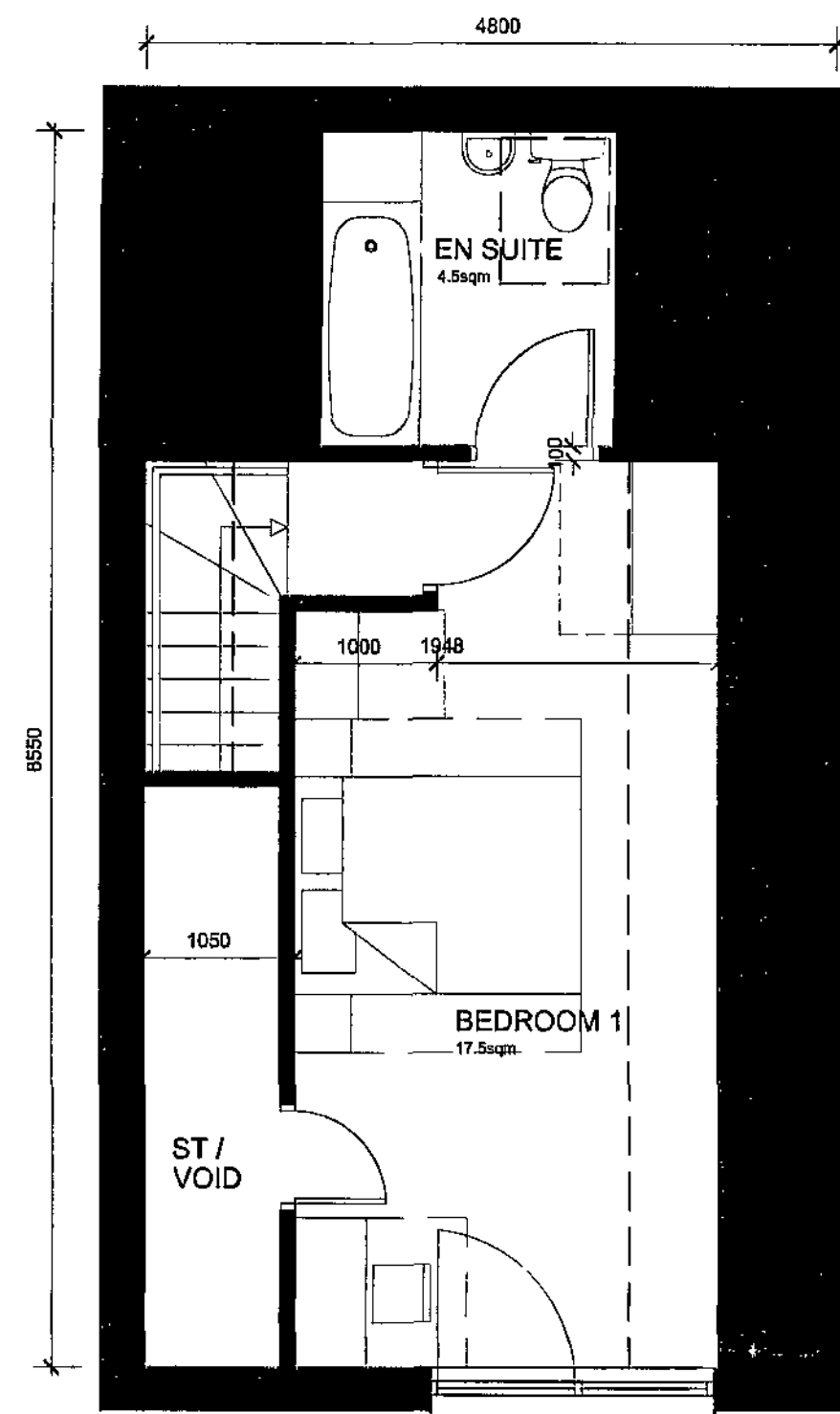




GROUND FLOOR



FIRST FLOOR



SECOND FLOOR (saw-tooth arrangement)
Plot size - 110.7 sqm

© Acarthur WSM Architects

The general contractor is responsible for the verification of dimensions on site and the architect is to be informed of any discrepancy.

The status of information contained in a computer copy of this drawing shall be limited to that conveyed by the paper copy.

- Revisions:
- A. 08.12.08 C.OO/M Timber PAV flooring on elevations now shown as Accented through coloured render system
 - B. 12.12.08 R/J Accented through coloured render system removed. Doors adjusted in line with manufacturer's system. Auto of back to render increases
 - C. 22.10.08 R/J Rendered area reduced and amount of brickwork increased

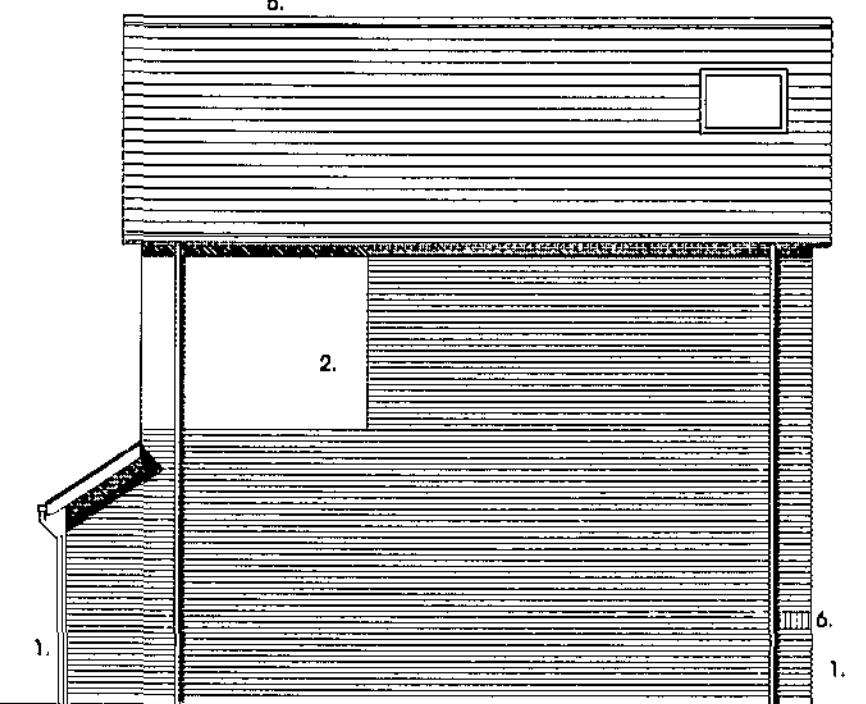


Entrance Elevation
Gable to Street Option

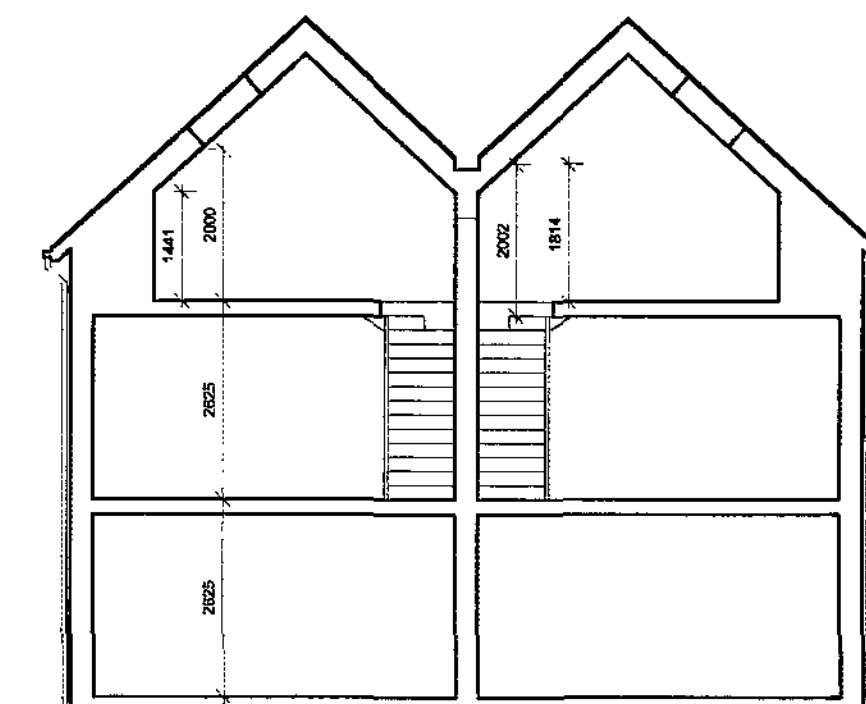
1. 1/1 Gable to street elevation
2. 2/2 Gable to street elevation
3. 3/3 Gable to street elevation
4. 4/4 Gable to street elevation
5. 5/5 Gable to street elevation



Rear Elevation



Side Elevation



Rear Elevation



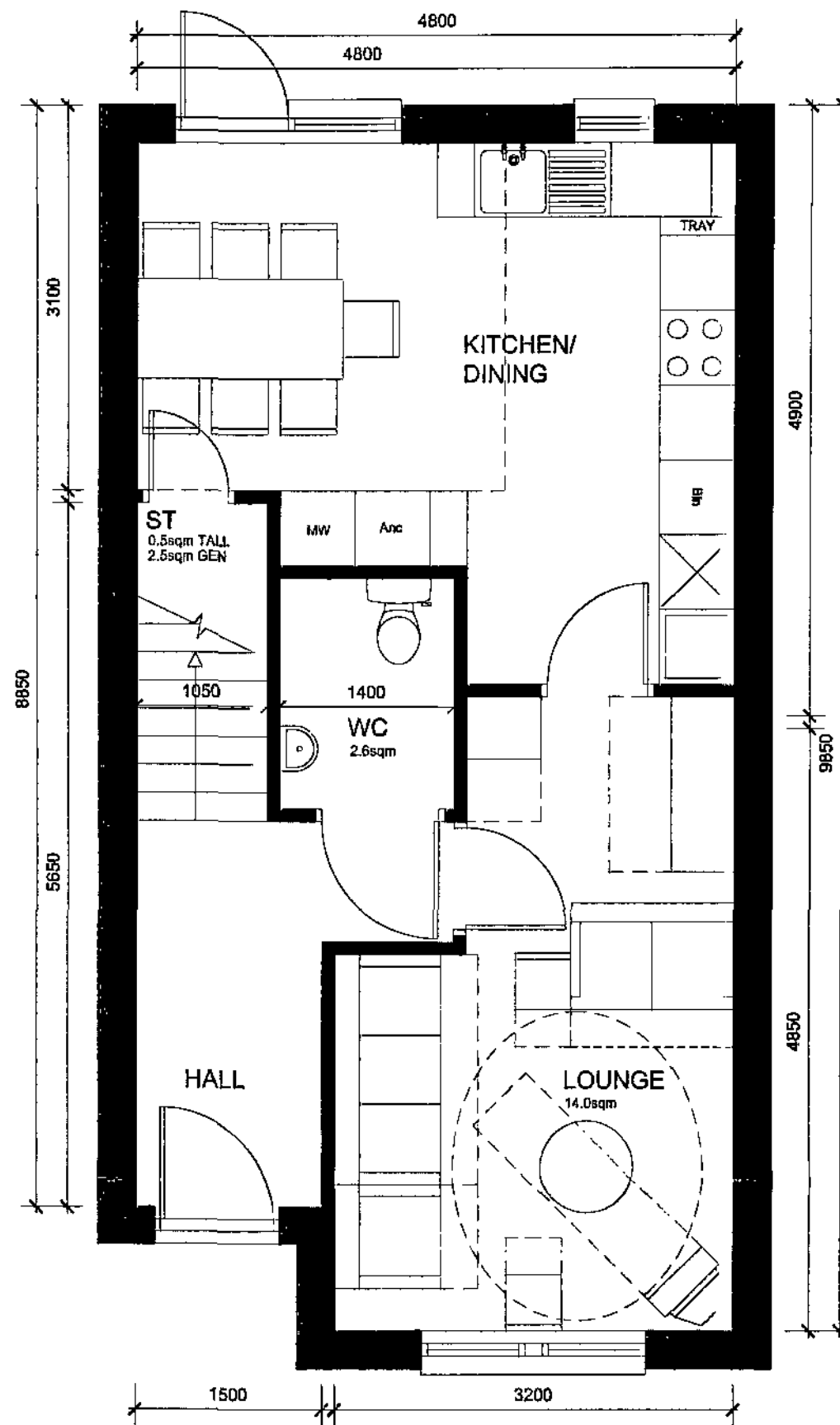
Barnsley Metropolitan Borough Council
27 JAN 2009
Corporate Mail Room



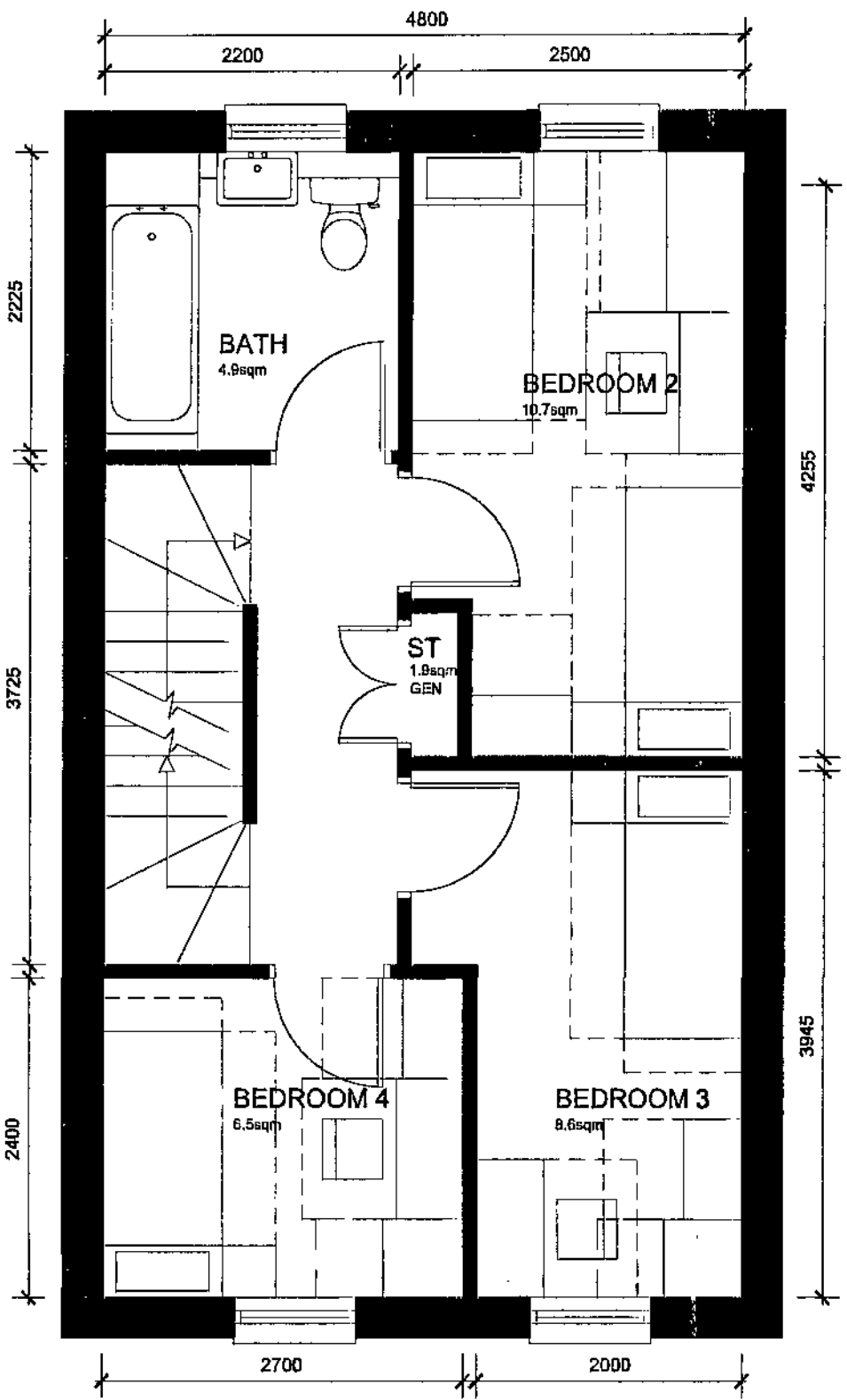
Scale: 1:100/1:50 @ A2
Date: oct 2008
Drawn: R/J/CO
Design: 2121-015-126C

PLANNING
4b6p - saw tooth
New Lodge Crescent, Barnsley
Yorkshire Housing

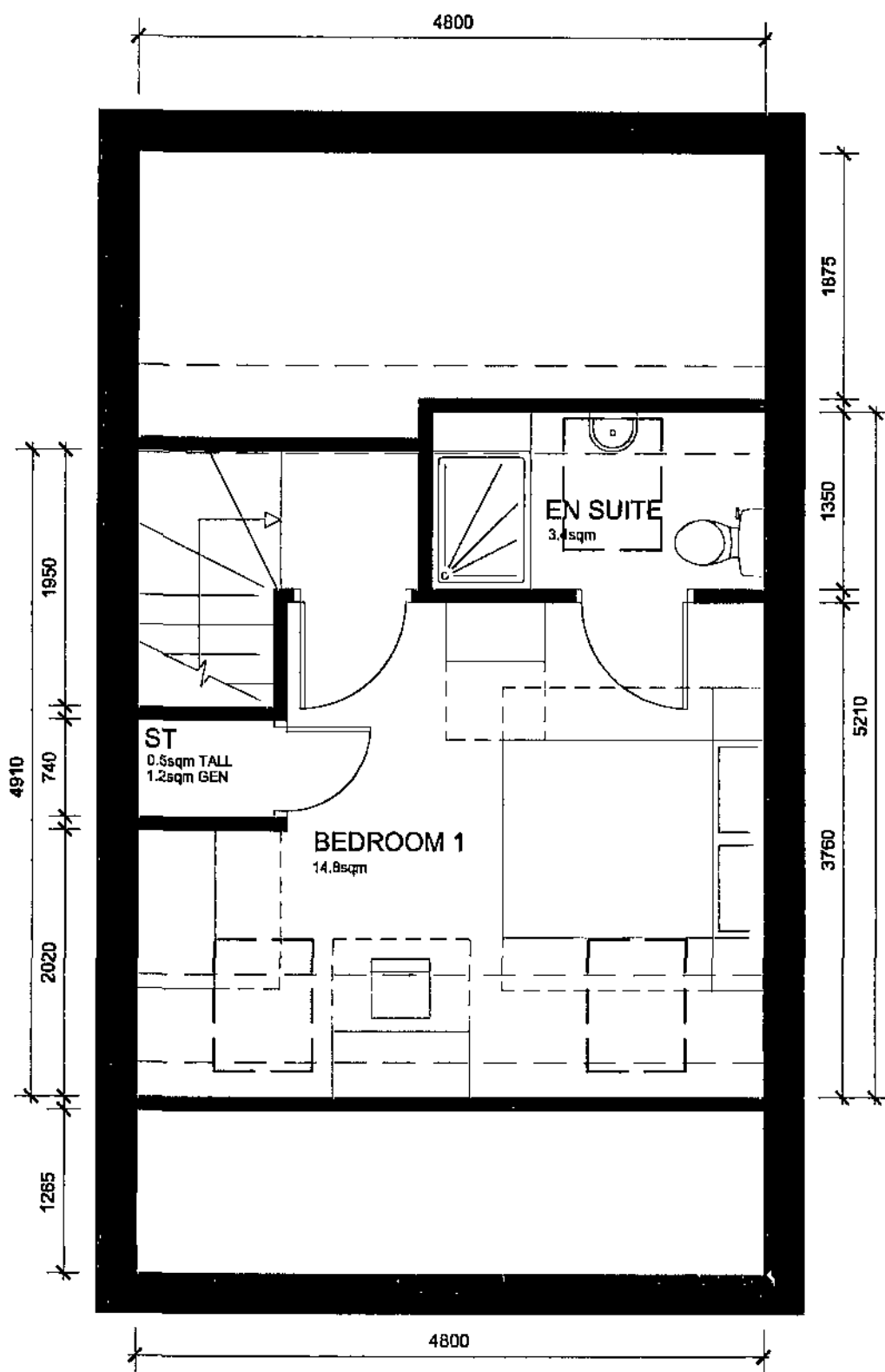




GROUND FLOOR



FIRST FLOOR

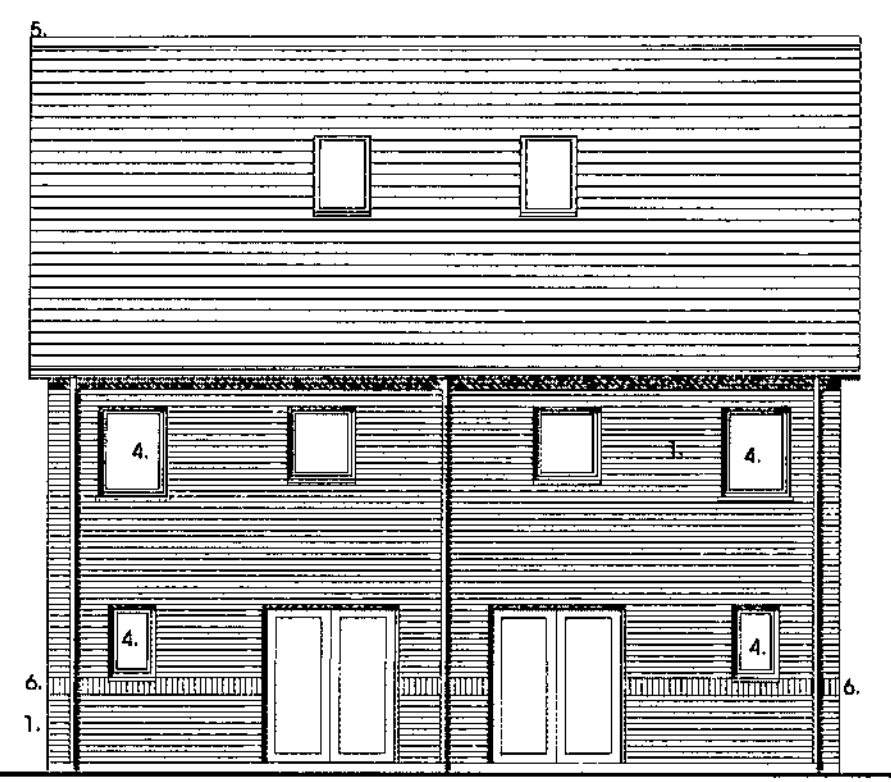


SECOND FLOOR (simple pitched arrangement)
Plot size - 108.5 sqm

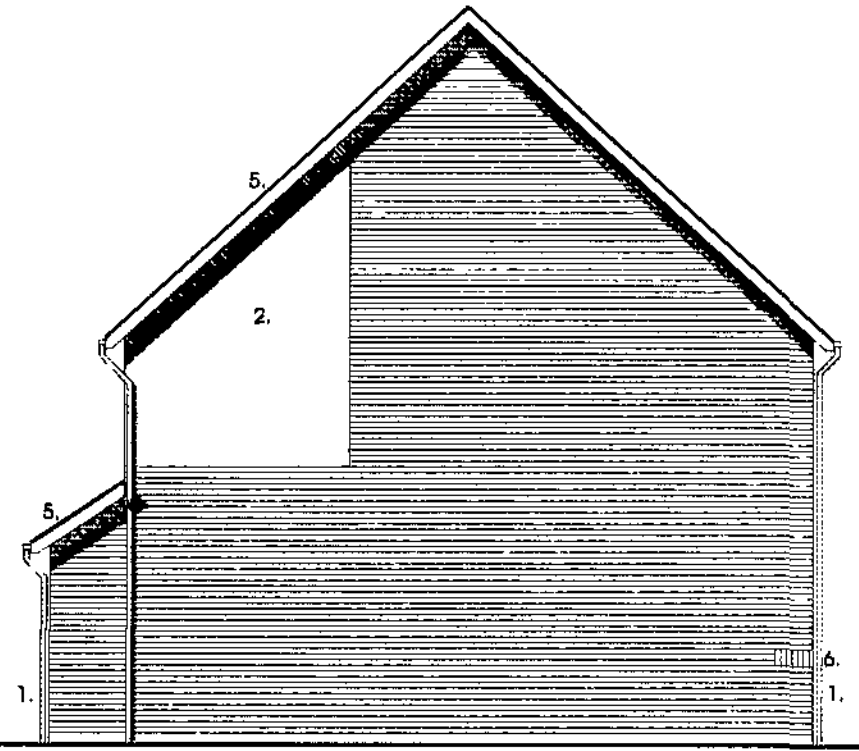
© Acornthus WSM Architects
The general contractor is responsible for the verification of dimensions on site and the architect is to be informed of any discrepancy.
The status of information contained in a computer copy of this drawing shall be limited to that conveyed by this paper copy.
Revisions:
A. 28.07.08 RJJ
Shadows and materials added, roof lights indicated
B. 29.07.08 RJJ
Window sills on plan adjusted to correspond with elevational treatment.
C. 01.08.08 C. COOBY
GA plan amended and furniture added to suit.
D. 26.09.08 C. COOBY
GA plan amended and furniture added to suit.
E. 08.12.08 C. COOBY
Timber PMV flooring on elevators now shown as a Access through coloured render system.
F. 12.12.08 RJJ
Access through coloured render system removed. Doors adjusted in line with manufacturer system.
G. 22.12.08 RJJ
Fitted door indicated and amount of brickwork indicated.



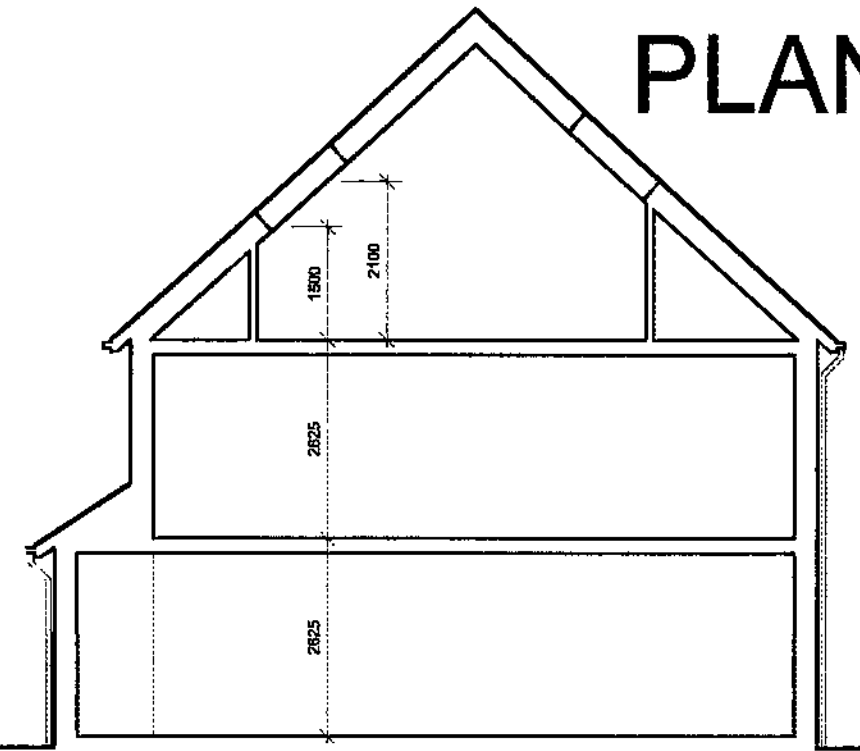
Entrance Elevation
Simple Pitched Roof Option



Rear Elevation



Side Elevation



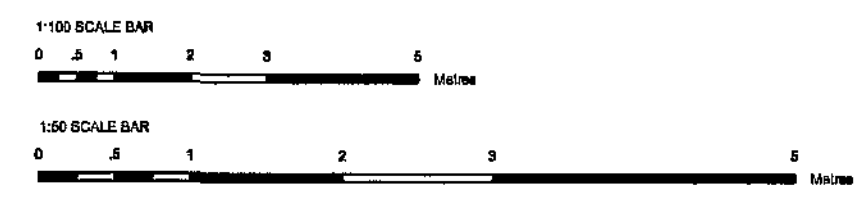
Section

PLANNING

Barnsley Metropolitan Borough Council
26 JAN 2008
Corporate Mail Room



Scale: 1:100 / 1:50 @ A2
Date: July 2008
Drawn: RJJ/CO
Checked: 2121-016-1269



1. F1 Quality facing brickwork
2. Through coloured render system (ie. Sto / Weber or similar approved)
3. Stained timber framed double glazed windows
4. Stained timber framed double glazed windows
5. Interlocking concrete tiled roof
6. Soldier course detail
7. Projecting entrance canopy with pressed metal colourcoated edge detail
8. Parapet wall with pressed metal capping flashed over from roof.
9. galvanized steel balustrade
10. colourcoated pressed metal panel

4b6p
New Lodge Crescent, Barnsley
Yorkshire Housing

