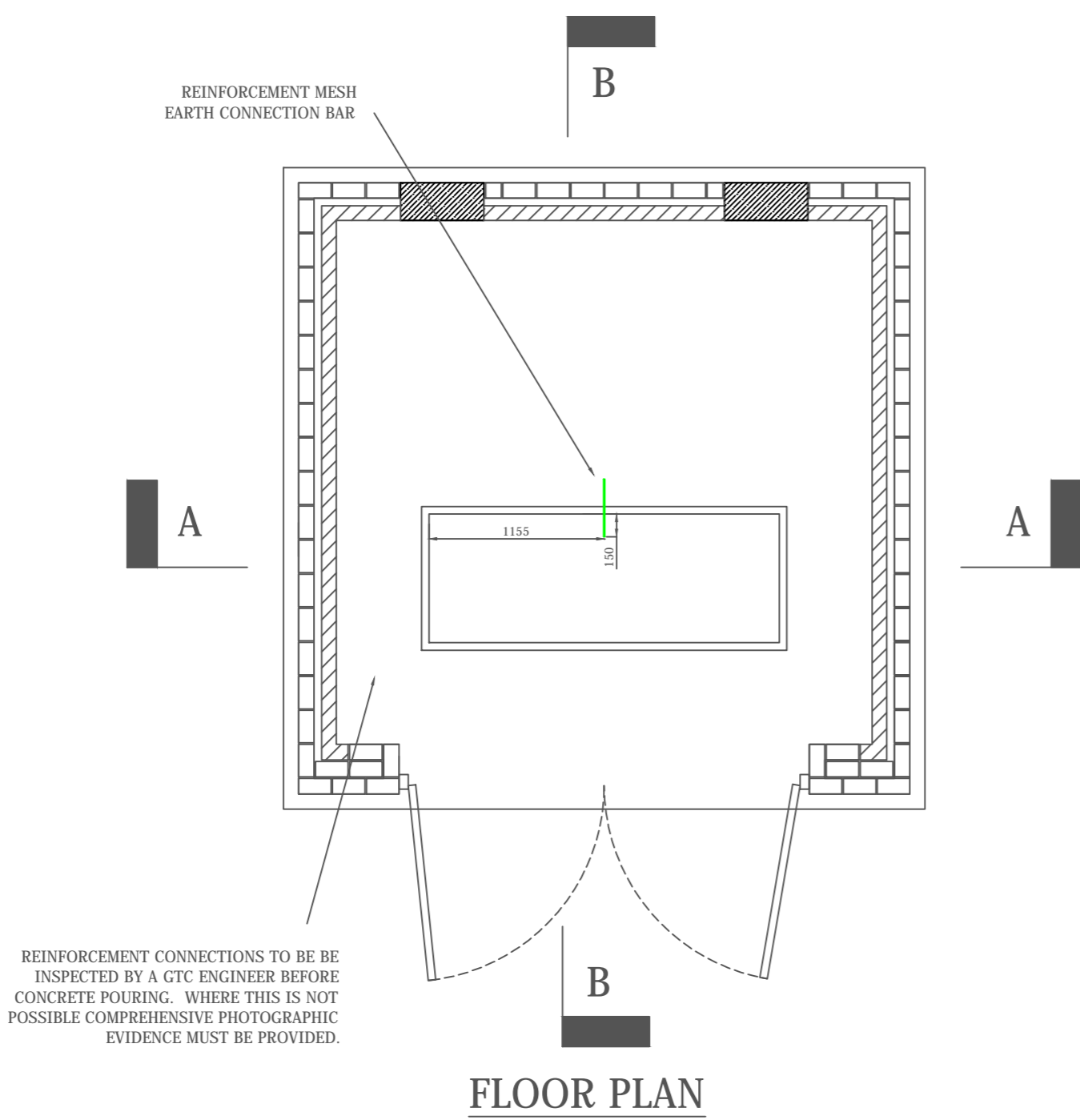
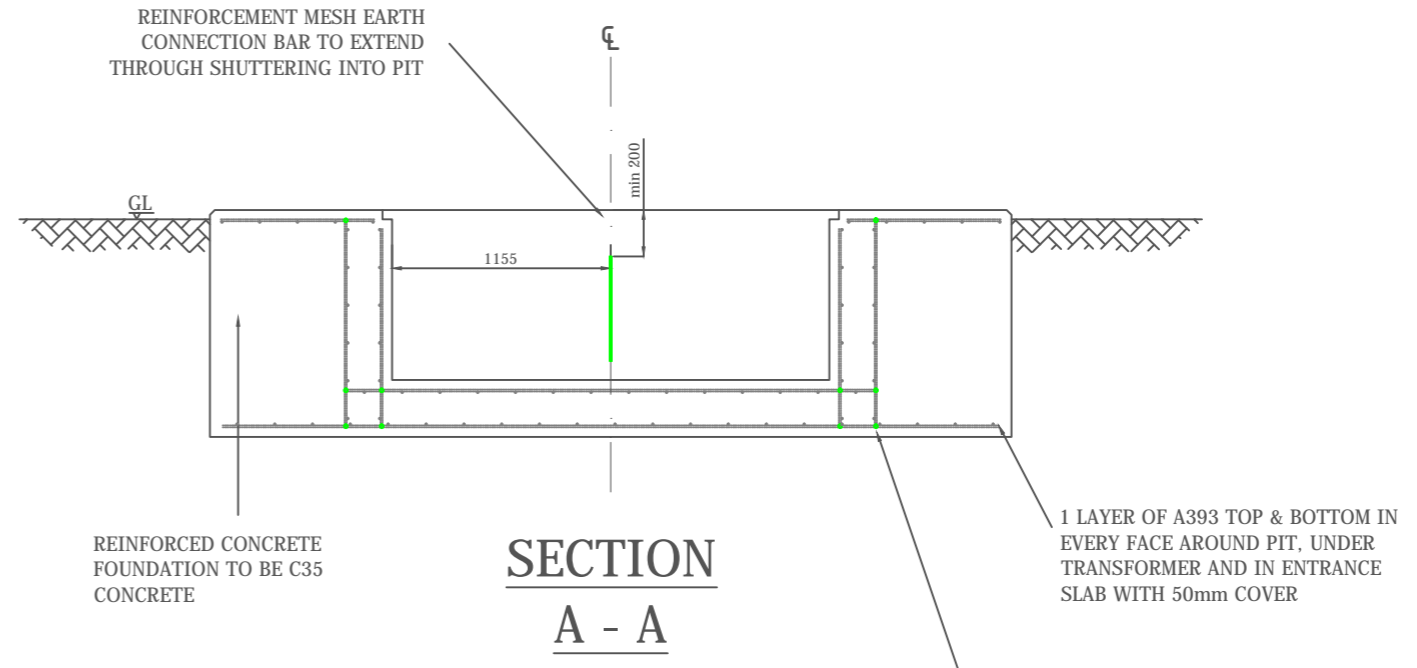


Rev	Revision Note	Date	Drawn by	Approved
1-0	Original drawing	05/04/11	AS	KB
1-1	Duct details amended	29/03/12	AS	MS
1-2	Wording of sub station stamp amended	10/09/14	SW	MS

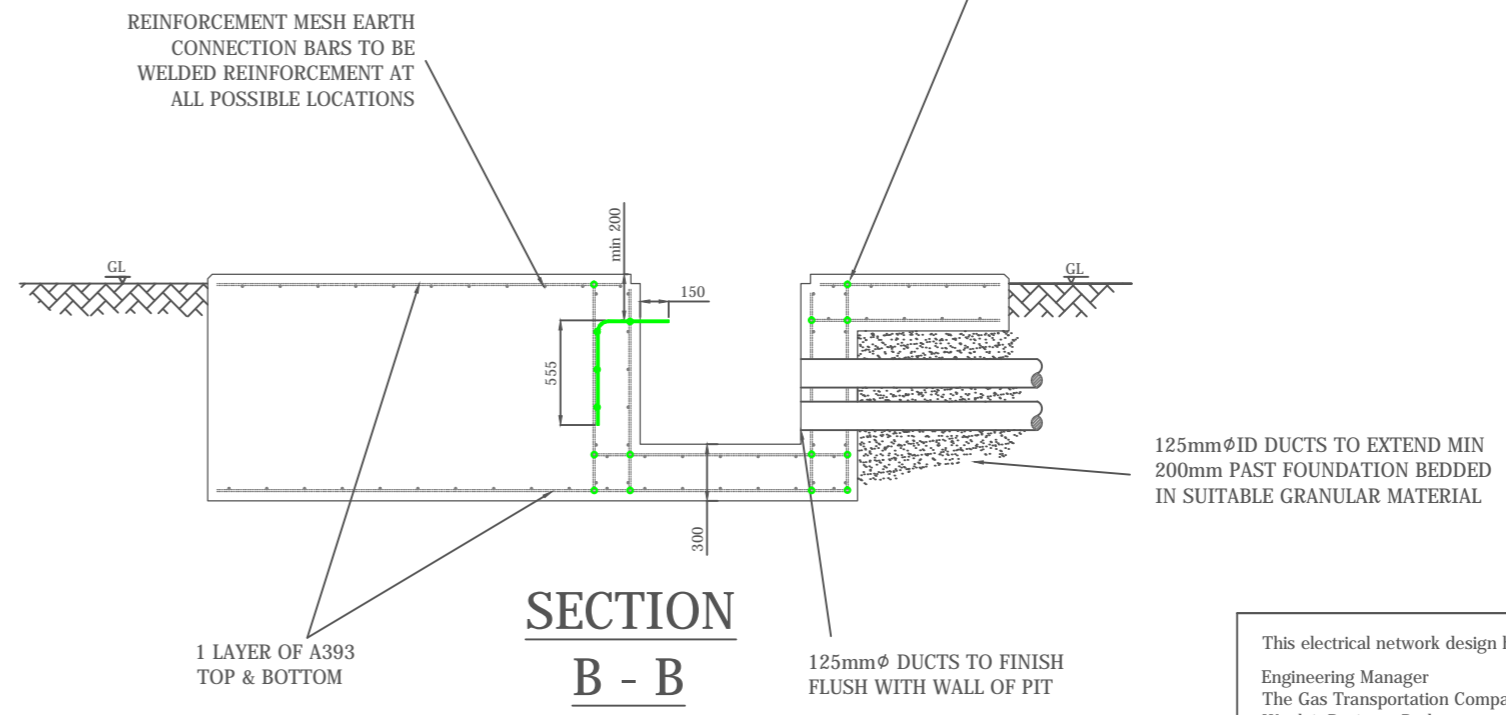
**FOR FULL BASE DETAIL PLEASE REFER TO GTC SUBSTATION DRAWING GTC-E-SS-001X AND SUBSTATION DOCUMENT GE-TGI-IG-0032**



**FLOOR PLAN**

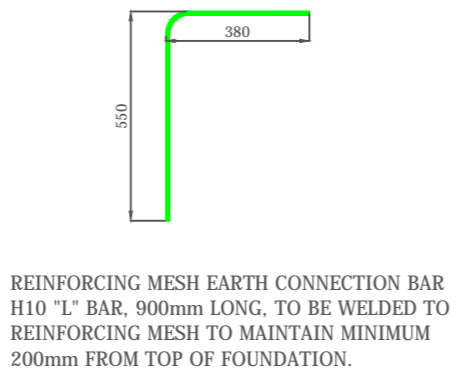


**SECTION A - A**



**SECTION B - B**

REINFORCEMENT CONNECTIONS TO BE BE INSPECTED BY A GTC ENGINEER BEFORE CONCRETE POURING. WHERE THIS IS NOT POSSIBLE COMPREHENSIVE PHOTOGRAPHIC EVIDENCE MUST BE PROVIDED.



REINFORCING MESH EARTH CONNECTION BAR H10 "L" BAR, 900mm LONG, TO BE WELDED TO REINFORCING MESH TO MAINTAIN MINIMUM 200mm FROM TOP OF FOUNDATION.

This electrical network design has been carried out by:  
 Engineering Manager  
 The Gas Transportation Company Ltd Tel : 01359 240363  
 Woolpit Business Park Fax : 01359 244398  
 Bury St Edmunds www.gtc-uk.co.uk  
 Suffolk  
 IP30 9UP  
 All cables and equipment used on this design are to be in accordance with G81 standards.  
 © Electricity Networks Company Ltd

**THIS DRAWING IS TO BE READ IN CONJUNCTION WITH DRAWING GTC-E-EA-0001 OR GTC-E-EA-0002**

**APPROVED FOR CONSTRUCTION**

Drawing Scale : NOT TO SCALE  
 O.S.REF : N/A  
 Drawing Number : GTC-E-EA-0003\_R1-2  
 Description : REINFORCEING MESH EARTH CONNECTION BAR LAYOUT

