

04 Design Approach

Proposed Plans

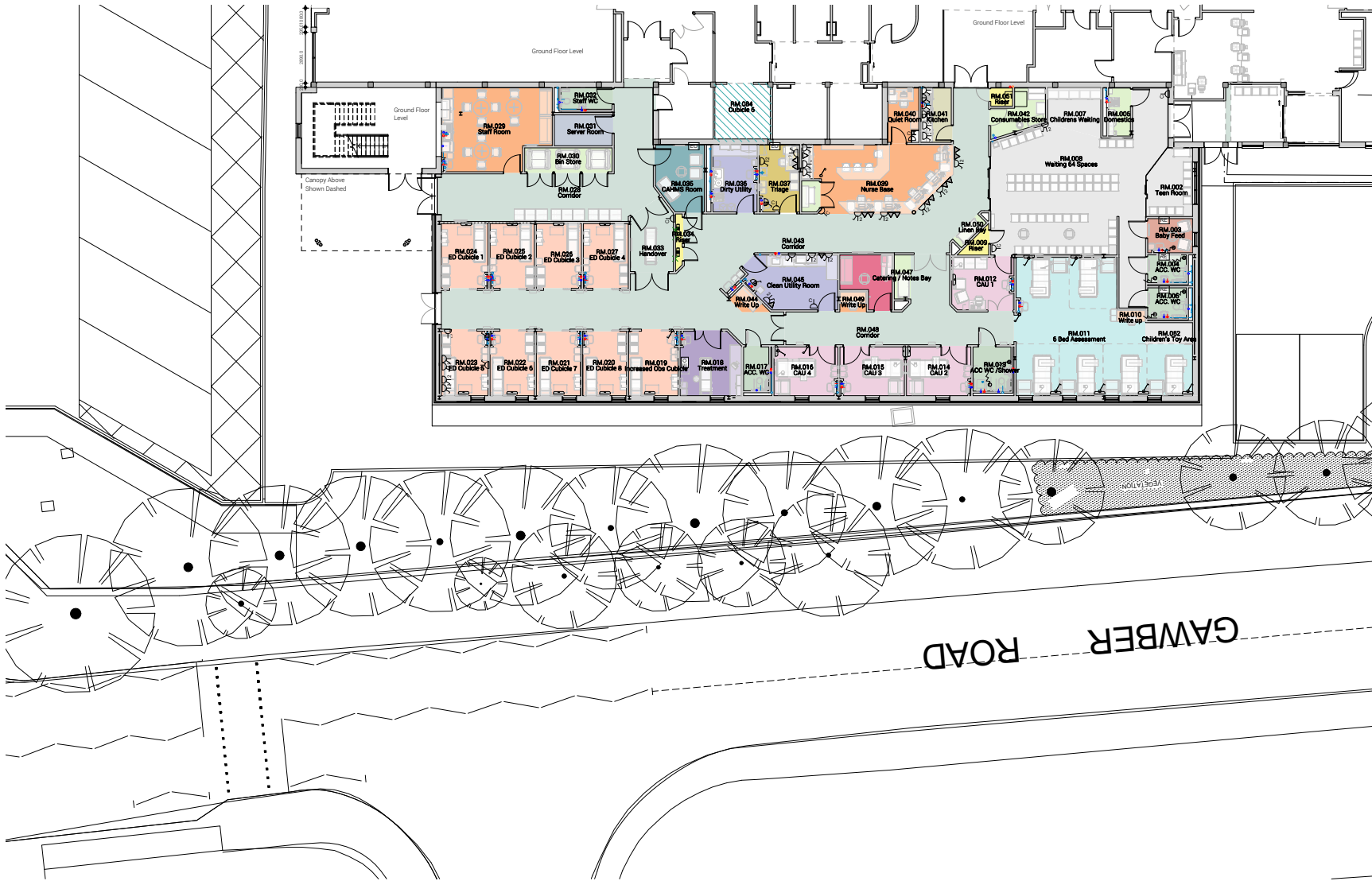


- - - - - Phase 2 works
New EDCAU
- - - - - New EDCAU
patient access
- - - - - Blue Light
entrance
- - - - - Phase 3 works
New Majors
Department
- - - - - New majors
patients access

Proposed GA Plans for EDCAU & Majors Department

04 Design Approach

Proposed Plans



Proposed GA Plans for EDCAU with Phase 1 immediate context

04

Design Approach

Proposed Section_Site Context



Residential Houses

Existing landscape buffer

Gawber Road

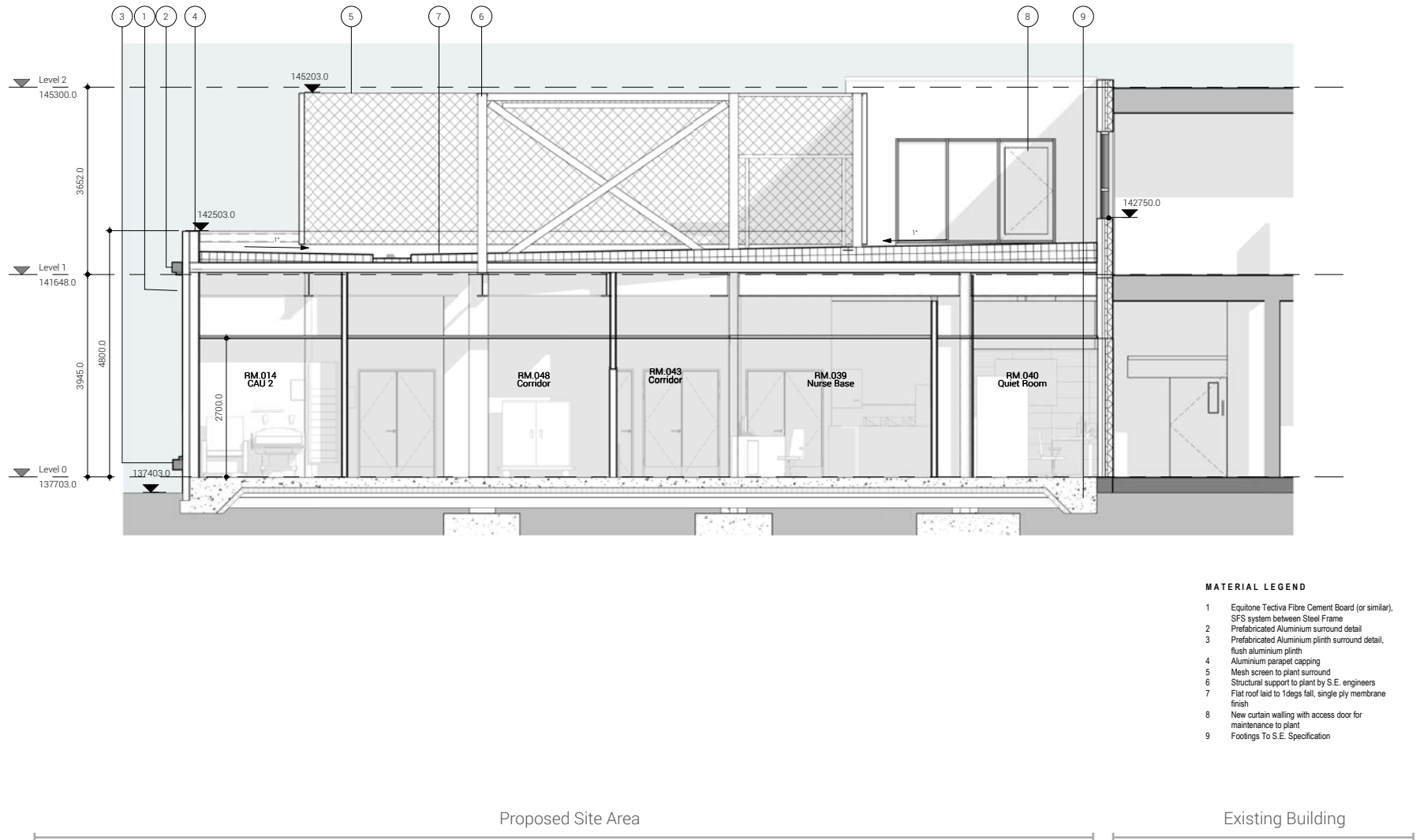
Existing landscape buffer

Proposed Site Area

04

Design Approach

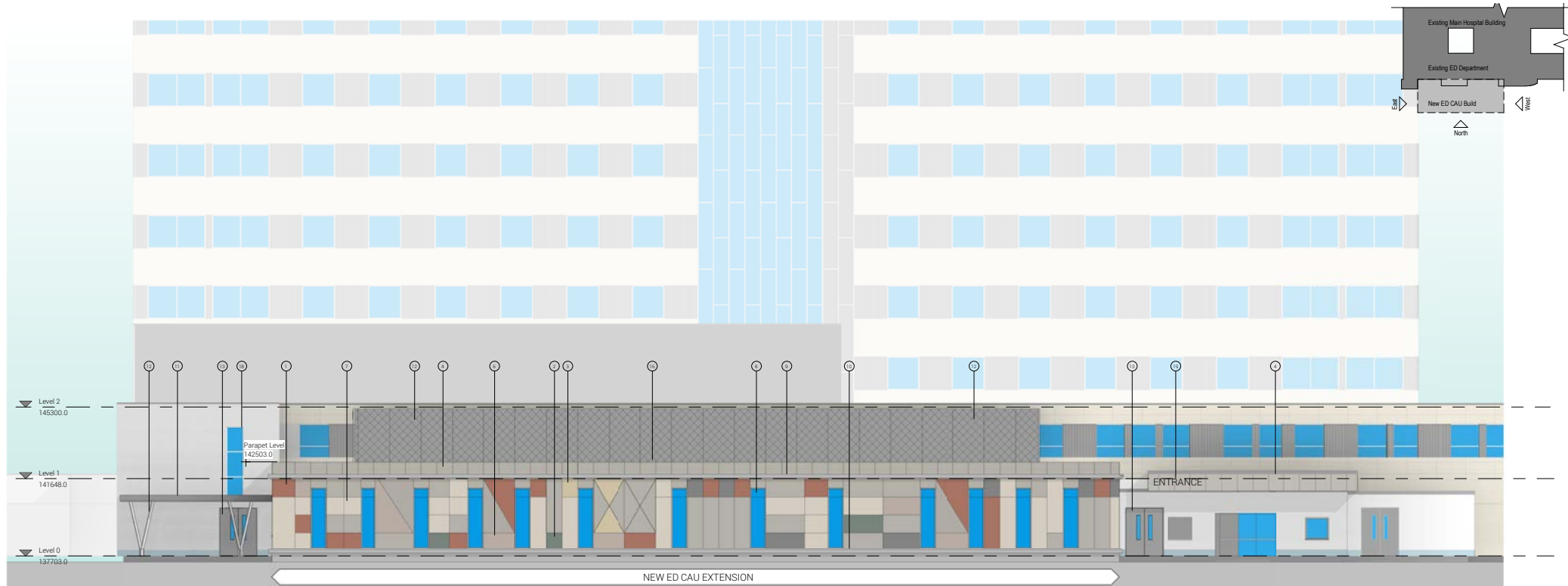
Proposed Building Section



04

Design Approach

Proposed Elevations



Proposed Elevation North

04

Design Approach

Proposed Elevations



Proposed Elevation East



Proposed Elevation West

MATERIAL LEGEND

- 1 Equitone Tectiva Fibre Cement Board (or similar), colour NCS 3030-Y9
- 2 Equitone Natura Fibre Cement Board (or similar), colour NCS S 4005-
- 3 Equitone Tectiva Fibre Cement Board (or similar), colour NCS S 3020-1
- 4 Equitone Natura Fibre Cement Board (or similar), colour NCS S 1502-Y
- 5 Equitone Tectiva Fibre Cement Board (or similar), colour NCS S 6005-f
- 6 Equitone Tectiva Fibre Cement Board (or similar), colour NCS S 1005-1
- 7 Equitone Tectiva Fibre Cement Board (or similar), colour NCS S 3010-1
- 8 Windows with manifestation, top panel opaque
- 9 Prefabricated Aluminium surround detail
- 10 Prefabricated Aluminium plinth surround detail, flush aluminium plinth
- 11 Aluminium parapet capping
- 12 Mesh screen to plant surround
- 13 Singly ply canopy finish, aluminium capping surround
- 14 Structural support to canopy by S.E. engineers
- 15 New fire escape door
- 16 Flat roof laid to 1degs fall, single ply membrane finish
- 17 New curtain walling with access door for maintenance to plant
- 18 New curtain walling to replace existing stripped, to match existing
- 19 New Entrance signage

04

Design Approach

Facade & Materiality

4.0 Overview

With the facade, we wanted to express the horizontal layers of the building to be sympathetic towards the existing facade and its prominent banding.

However we also wanted to inject this banding with horizontal modular elements to again give a subtle nod to its prominent 1960's surrounding modular construction.

The siting of the new EDCAU extension is situated along Gawber Road in front of part of the existing Red Zone Emergency Department.

As it is facing Gawber Road it is an excellent opportunity to create more of an interesting and iconic frontage for the hospital as Gawber Road is one of the key vehicular approaches to the site and into the main hospital visitors car park.

4.1 Facade Design

This design proposes to incorporate the modularity of the existing facade of the EDCAU. However instead of the form being very regular, as it is proposed to be a children's department we wanted to play with this modular form by creating more dynamic geometric patterns within this more fixed grid system.

In contrast to the existing white concrete and grey linear facade we wanted to propose a variety of pastel colours along the facade to help create a more iconic and playful facade that can be identified upon approach of the Hospital.

Due to the sensitivity of the patients and the close proximity to the surrounding main road etc, we are proposing non openable windows and for the scheme to be fully mechanically ventilated. This will also assist with infection control issues and any noise pollution that may have incurred from Gawber Road. This also allows us to propose a large full height window into many patient areas to really allow the light to penetrate deep into the floorplate.