



# Tree Protection Plan

## Construction Exclusion Zone

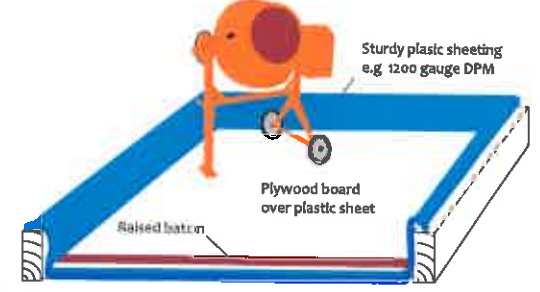
Within this area the following restrictions shall apply:

- No excavation or land regrading whatsoever.
- No storage of materials, rubble, soil or spoil.
- No fires within the exclusion zone or within 10m of any tree canopy.
- No site cabins or other temporary structures.
- No discharge of polluted water, cement or chemicals of any kind.
- No use of any machinery, or passage or parking of vehicles.
- No tree works without council consent.

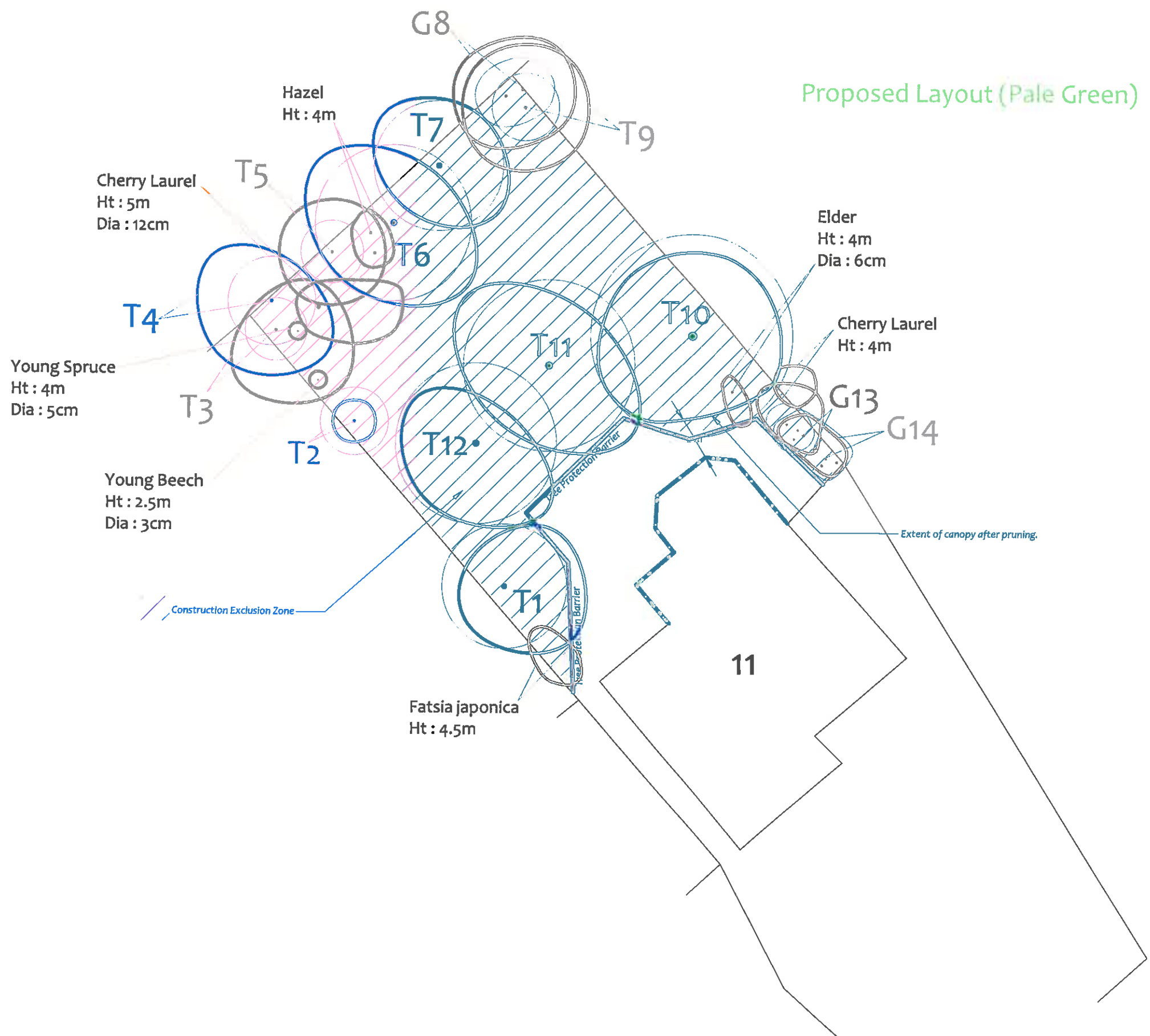
## Tree Protection Barriers:

<p>Fixed protective barrier: The 'In-Ground System' or the 'Backstay System'. To remain in place for all construction activity</p>	<p>Moveable protective barrier: The 'Backstay System'. To remain in place except when approved works are being undertaken in the Restricted Zone</p>
--	--

## Dedicated Mixing and Cleaning Area



Tree Ref.	Species	Height (m)	Root Protection Area		
			Radius (m)	m <sup>2</sup>	Square (m)
T1	Cherry	5.5	2.9	26	5.1
T2	Spruce	7.5	1.6	8	2.8
T3	Norway Maple	8	1.4	7	2.6
T4	Horse Chestnut	8	2.0	13	3.6
T5	Beech	7	1.4	7	2.6
T6	Alder	11	3.6	41	6.4
T7	Norway Maple	10	3.0	28	5.3
G8	Hazel	5.5	1.4	7	2.6
T9	Rowan	6	1.6	8	2.8
T10	Oak	13	4.7	69	8.3
T11	Oak	12	4.0	49	7.0
T12	Oak	12	3.7	43	6.6
G13	Cotoneaster	5	1.0	3	1.7
G14	Cherry Laurel	5	1.2	5	2.1



**Tree Retention Categories**  
Stems & canopies shown

- Category A tree**
- Category B tree**
- Category C tree**
- Category U tree**

- Trees of high quality with an estimated life expectancy of 40+ years. Usually large trees with significant presence or smaller trees with excellent form. Retention of these trees is highly desirable.
- Trees of moderate quality with a life expectancy of 20+ years. Usually maturing trees, or younger trees with good form. Retention of these trees is desirable though less than Category A trees
- Unremarkable trees of low quality and merit. Individual specimens are not considered to be a material planning consideration.
- Trees unsuitable for retention due to their very poor condition.

Drawing No: **CCL 09709** / TPP Rev: 1

Title: **Tree Protection Plan**

Site: **11 Lundhill Farm Mews S73 0PJ**

Scale: 1:200

Paper Size: A3

BS 5837 Root Protection Area (radius = 12xstem diameter)

Root Protection Area needing amendment due to site conditions, e.g. presence of existing road or building.

Root Protection Area having been amended to account for for site conditions

T1 = Tree No 1    G2 = Group No 2    H3 = Hedge No 3

**MN** = Measured North:

Canopy spreads are sometimes measured to an approximate N defined by site features. Often more accurate, especially where rows of trees are not aligned N-S or E-W.