

- KEY TO PLAN**
- Project extent boundary
- HARD LANDSCAPE ELEMENTS**
- SURFACING**
(All base build-ups to Engineer's specification)
- CRD** Hazard paving flags to top and bottom of entrance ramp and DDA compliant
 - HS1** Proposed Tarmac surface to Bin store base (Build ups to engineers)
 - HS2** 100 x 100mm cut cobble sett paving 5 rows band finish - Granite silver grey
 - RBG1** Permeable Resin Bound Gravel (3 shades) with metal edge and Cell web over RPA. e.g. (Addagrip Sunset with Kinley or similar approved)
 - RBG2**
 - RBG3**
 - RPACW**
- KERBING AND EDGING**
- K** Precast concrete road kerb. Laid with 125mm upstand. e.g. (Marshalls 125mm x 255mm x 915mm or similar approved)
 - ME** 125mm Rigid Metal Edging. Laid flush e.g. (Kinley or similar approved)
- SITE SECURITY**
- HR** 1100mm high Stainless Steel Handrail to ramp as per specifications
 - WLF** 2.4m high Proposed weldmesh fence
 - BL** Collapsible stainless steel bollards e.g. (Marshalls or similar approved)
 - TR** Bin store enclosure and Vertical timber trellis slats for climbing plants
 - DCK** Bespoke felled timber decking bench
 - MP** Bespoke metal planters
- SOFT LANDSCAPE**
- RPA** Existing trees retained (Refer AIA)
 - Existing Tree to be removed as per Arboricultural Impact Assessment guide
 - BRKM** Proposed bark mulch surface
 - BLB** Proposed seasonal bulbs
 - Proposed low height ornamental hedge
 - Min 1m high Proposed native hedge
 - Proposed low height ground covers
 - Proposed Medium sized tree planting (Refer softworks plan)
 - WFM** Proposed wild flower meadow e.g. (Emorsgate or similar approved)
- STREET FURNITURE**
- TBN** Proposed hardwood timber standard bench, semi circular bench 3 type
 - TPL** Proposed 300-450mm high hardwood timber logs from felled trees on site
 - CySh** Proposed cycle shelter (CySh)
 - CySt** Proposed cycle stand (CySt)
 - Outline position of ecological enhancement measures. Hibernaculum, bug hotel, pond etc. Subjected to Project Ecologist review
- PARKING SPACE**

NOTES:

- VEHICLE TRACKING SHOWN TAKEN FROM UPDATED TRACKING UNDERTAKEN FOR RIBA STAGE 3 BY CIVIL ENGINEER. REFER TO CIVIL ENGINEER'S INFORMATION FOR FURTHER DETAILS
- LANDSCAPE ELEMENTS SHOWN ON PROPOSED PLANS SUBJECT TO FURTHER REVIEW BY ARBORICULTURAL LIST, ECOLOGIST AS REQUIRED FOR COORDINATION
- PARKING PROVISION SUBJECT TO REVIEW BY LOCAL PLANNING AUTHORITY HIGHWAYS DEPARTMENT

| P01 | PLANNING | TC | SR | 31-05-2024 |
|-----|-------------|-------|---------|------------|
| Rev | Description | Drawn | Checked | Date |

B

BOND BRYAN

e info@bondbryan.co.uk
w www.bondbryan.co.uk

Barnsley Metropolitan Borough Council

BARNLSLEY Metropolitan Borough Council

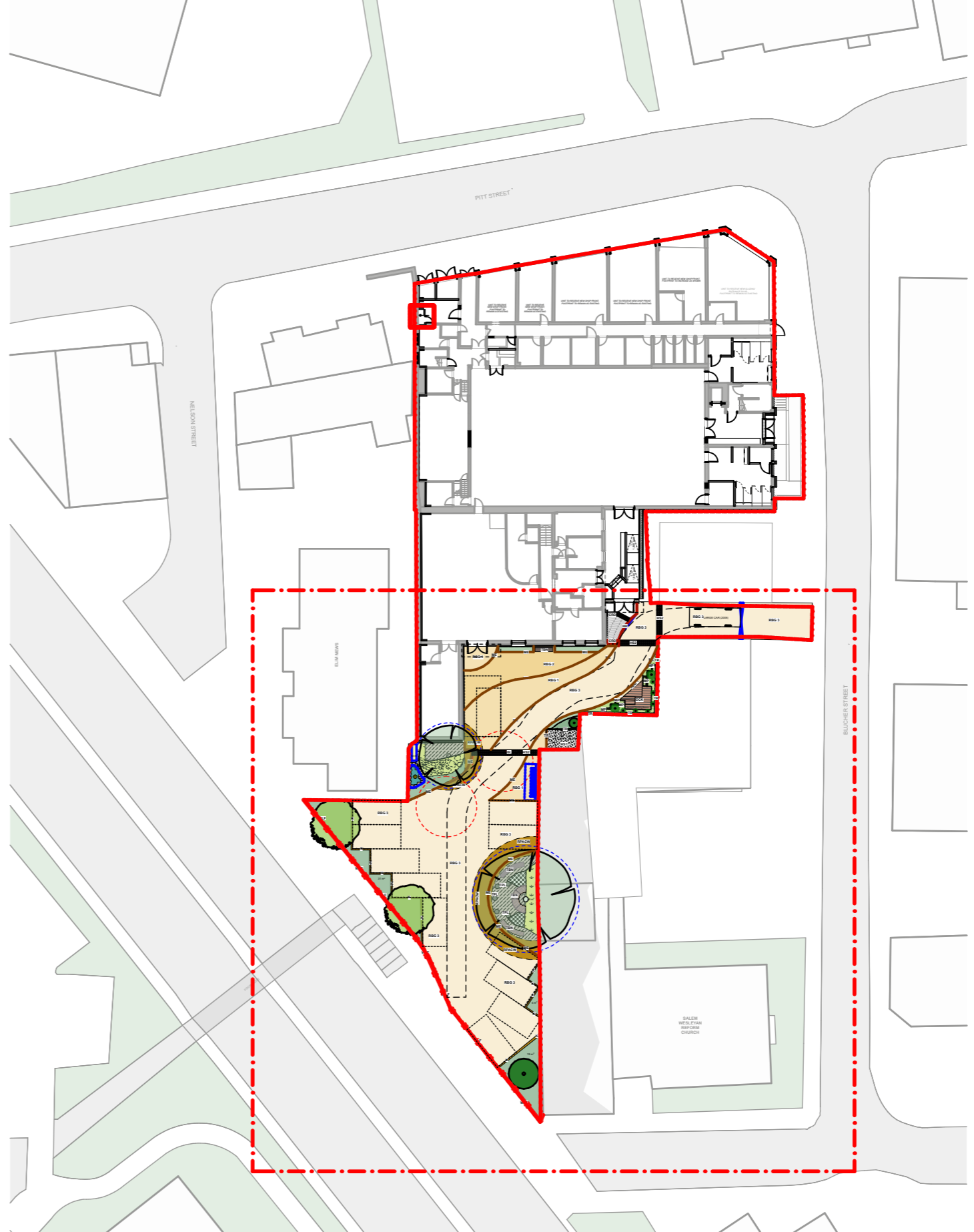
Currie & Brown

Barnsley Levelling Up Fund
Barnsley YMCA/Chilypep

Proposed General Arrangement Plan

| | |
|---------------------------------|--|
| Originator project ref 23048 | Purpose of Issue Design Development |
| Scale(s) 1:100 | Revision description Preliminary |
| Paper size A1 | |

| | |
|--|----------|
| project originator volume level type role number | revision |
| BALU - BBA - YM - XX - DR - L - 1006 | P01 |



KEY PLAN @ 1:500