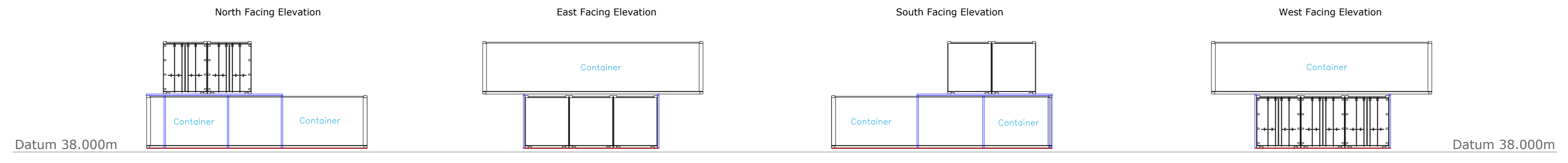


440760E

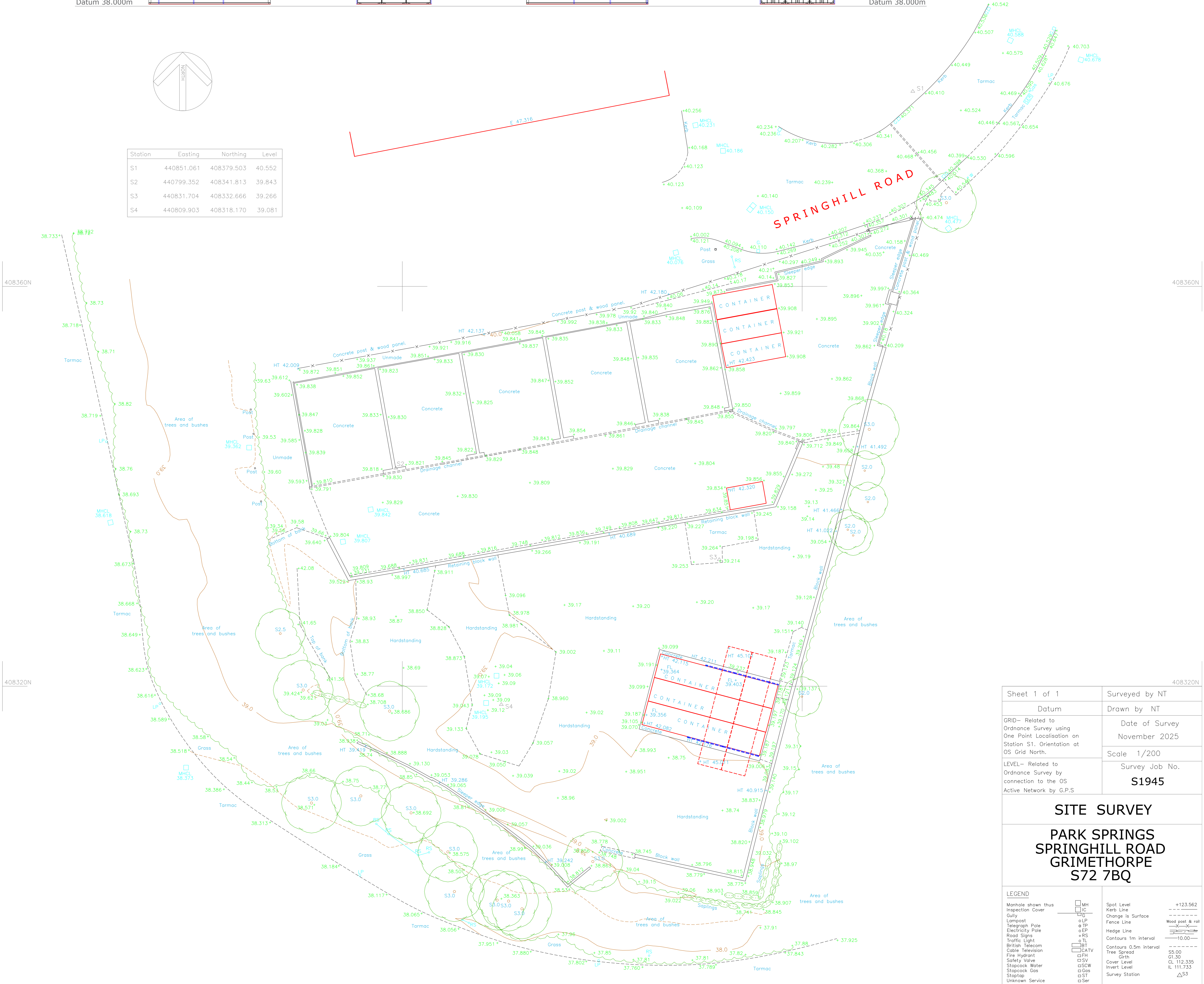
408360N

408320N

440760E



Station	Easting	Northing	Level
S1	440851.061	408379.503	40.552
S2	440799.352	408341.813	39.843
S3	440831.704	408332.666	39.266
S4	440809.903	408318.170	39.081



Sheet 1 of 1	Surveyed by NT
Datum	Drawn by NT
GRID- Related to Ordnance Survey using One Point Localisation on Station S1. Orientation at OS Grid North.	Date of Survey November 2025
LEVEL- Related to Ordnance Survey by connection to the OS Active Network by G.P.S	Scale 1/200
	Survey Job No. S1945

SITE SURVEY
PARK SPRINGS
SPRINGHILL ROAD
GRIMETHORPE
S72 7BQ

LEGEND	
MH	Spot Level
IC	Kerb Line
UG	Change in Surface
LP	Fence Line
EP	Wood post & rail
TP	Hedge Line
RP	Contours 1m interval
RS	Contours 0.5m interval
TL	Tree Spread
BT	Cable Television
BT	Fire Hydrant
TV	Safety Valve
SV	Stopcock Water
SW	Stopcock Gas
CS	Stopcock
ST	Unknown Service
Ser	Survey Station



Tel - 07446383774 Email - nick@turnbullsurveying.co.uk
www.turnbullsurveying.co.uk