



STATEMENT OF COMMUNITY INVOLVEMENT

**GRIMETHORPE SOLAR FARM ON LAND
NORTH-WEST OF GRIMETHORPE, EAST of
CUDWORTH AND SOUTH-WEST OF
BRIERLEY**

December 2024

Contents

Executive Summary	02
Introduction	04
Approach to Consultation	04
Scheme Overview	05
The Consultation	06
Consultation Feedback	09
Conclusion	11
Appendices	12

1. Executive Summary

- 1.1. The Applicant, Enviromena, conducted a programme of public consultation and stakeholder engagement with regards to its proposals for a solar farm (“the Proposed Development”) on land north-west of Grimethorpe, east of Cudworth and south-west of Brierley (“The Site”).
- 1.2. The consultation centred around a public information event, which was held on the 17th October 2024 at St Luke’s Church Grimethorpe, St Lukes Rd, Grimethorpe, Barnsley S72 7FN. (**Appendix 1**).
- 1.3. The Proposed Development falls within a non-Parish area, however, it is in close proximity to Shafton Parish Council. The Applicant attended the Shafton Parish Council meeting on 30th January 2023. The Applicant also attended a meeting with Grimethorpe Residents Group on 3rd April 2023.
- 1.4. The Applicant engaged with the Proposed Development’s Ward Councillors (North East Ward), Cllr Dorothy Coates, Cllr Ruth Booker and Cllr Ashley Peace. Neighbouring Ward Councillors, Cllr Joe Hayward, Cllr Anita Cherryholme and Cllr Stephen Houghton (Cudworth Ward) were also offered a briefing and invited to the event. Dan Jarvis MP was also invited to the public information event.
- 1.5. The Proposed Development was first introduced to local residents via a leaflet that was sent to 2,152 residential households and 36 businesses (see **Appendix 3** for postal distribution area) on 23rd January 2023. Following this initial public consultation process, a number of amendments were made to the Proposed Development. A public information event was subsequently held with the local community. A brochure (**Appendix 2**) detailing the updated plans and inviting residents to the public information event was sent out on 7th October to the same 2,188 addresses (see **Appendix 3** for postal distribution area).
- 1.6. At the public information event, 105 attendees were presented with 8 display boards (**Appendix 1**) giving information about the Applicant, the Site and concept design. Members of the Development Team were at the event, helping to explain the design and answer any questions attendees had. Attendees were encouraged to provide their thoughts and opinions by way of feedback forms available at the exhibition or by way of the consultation brochure (**Appendix 2**). Additionally, the development team provided attendees with contact details if they wished to

send any follow up questions or feedback, and a project website was available for people to submit their feedback online.

1.7. Prior to the public information event, the Applicant received a total of 198 feedback forms. Of the 198 residents who completed a feedback form prior to the public information event, 65 were fully supportive of the scheme, 19 were broadly supportive of the scheme, 94 residents objected to the scheme and 20 were of no opinion.

1.8. Of the 17 residents who completed a feedback form at the public information event and after, 3 were fully supportive, 1 was broadly supportive, 7 objected to it and 5 were of no opinion or did not provide an answer.

1.8 Key matters raised during pre-application consultation included:

- General support for renewable energy
- Loss of agricultural land
- Potential visual impact
- Potential impact on biodiversity
- Potential impact on flooding

2. Introduction

- 2.1 The Applicant conducted a programme of public consultation and stakeholder engagement with regards to the Proposed Development.
- 2.2 The Proposed Development would provide renewable electricity for distribution via the local electricity distribution network. The proposed development would create enough renewable energy to meet the annual electricity needs of approximately 25,150 homes per annum. It would offset approximately 14,060 tonnes of CO².
- 2.3 This document provides an overview of the consultation programme, the feedback received together with an explanation as to how that feedback led to changes to the scheme design.

3. Approach to Consultation

- 3.1 Alpaca Communications was appointed by the Applicant to assist with the pre-application public consultation on the Project.
- 3.2 Alpaca Communications is a specialist public consultation agency with broad expertise in advising on and implementing consultation programmes for both private and public-sector clients.
- 3.3 Alpaca Communications understands the role pre-application consultation can play in helping to influence a project before a planning application is submitted and respond to comments made by local residents relating to the Project.
- 3.4 The Applicant strongly believes that now, more than ever, it is vital that local communities are able to see and shape planning applications that may have an impact on them.
- 3.5 Front-loading' public engagement in this way helps ensure the proposals are as informed as possible by the local community and other stakeholders prior to the submission of the planning application to the relevant Local Planning Authority. This approach recognises that all parties benefit from a communications programme that ensures all those people with a potential interest in a development are fully informed of the proposals and have had the opportunity to input early on. The Applicant is supportive of and fully committed to meaningful pre-application consultation.

Scheme Overview

4.1 The project is situated on land north-west of Grimethorpe, east of Cudworth and south-west of Brierley. In addition to having solar panels on the site, biodiversity and landscape enhancement measures will also be implemented.

4.2 The Proposed Development has a capacity of 49.9MW and will produce enough clean renewable electricity to power 25,150 homes per annum, a saving of 14,060 tonnes of CO² per annum.



Figure 1 : Site location Plan

4. The Consultation

Consultation Aims

4.1. The aims of the consultation were as follows:

- To work with local stakeholders and residents from the outset and see how we could improve the proposals by taking their suggestions into account.
- To raise awareness of the proposals within the local community and to gain their valuable insight based on their local knowledge.
- To gain a firm understanding of the key issues affecting the local community.
- To ensure the local community had the opportunity to give feedback on the proposals.

Consultation Overview

4.2. Consultation on the proposals began in January 2023 when the development team contacted Shafton Parish Council and Grimethorpe Residents Group. The Applicant attended a Shafton Parish Council meeting on 30th January 2023. The Applicant also attended a meeting with Grimethorpe Residents Group on 3rd April 2023.

4.3. The Applicant also engaged with the Proposed Development's Ward Councillors (North East Ward), Cllr Dorothy Coates, Cllr Ruth Booker and Cllr Ashley Peace. Neighbouring Ward Councillors, Cllr Joe Hayward, Cllr Anita Cherryholme and Cllr Stephen Houghton (Cudworth Ward) were also offered a briefing and invited to the event. Cllr Dorothy Coates and Cllr Ashley Peace attended the event. Dan Jarvis MP was also invited to the public information event.

4.4. The Proposed Development was first introduced to local residents via a leaflet that was sent to 2,152 residential households and 36 businesses (see **Appendix 3** for postal distribution area) on 23rd January 2023. Following this initial public consultation process, a number of amendments were made to the Proposed Development. A public information event was subsequently held with the local community.

4.5. In the second phase of public consultation, a brochure and invite (**Appendix 2**) for the public information event was sent out on 7th October 2024 to 2,152 residential households and 36 businesses (see **Appendix 3** for postal distribution area) inviting them to a public information event held on the 17th October 2024.

4.6. The Applicant held a public information event, where an updated concept design of the proposed scheme was available for residents to provide feedback on.

4.7. A website for the project (**Appendix 4**) was created, which can be accessed at the following address: www.grimethorpesolarfarm.com. The website provides visitors with an overview of the proposals, in addition to the ability to get in contact with the development team or leave feedback. As of 1 November 2024, the site has been viewed 2,445 times.

The Public Information Event

4.8. A public information event was held on the 17th October 2024 at St Luke's Church from 14:00-19:00. Eight display boards were presented to the public, which included information about the Applicant, indicative site plan and construction traffic details (see Appendix 1).

4.9. Figure 2 below shows the concept design which was shown to the public at the public information event.

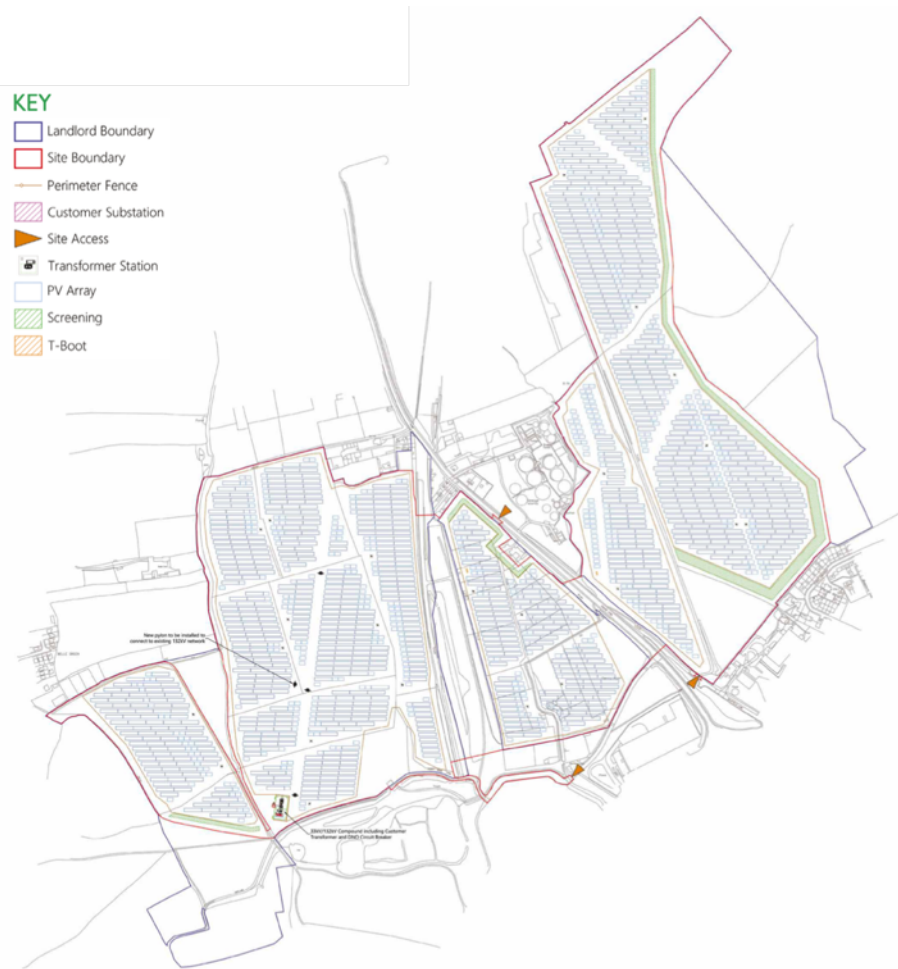


Figure 2: Concept design presented at the Public Information Event

4.10. At the public information event, a community benefit ‘suggestion board’ was displayed to encourage attendees to provide suggestions as to how the Applicant could deliver a local community benefit.

4.11. A total of 105 people attended the event.

5. Consultation Feedback

Feedback Forms and Online Questionnaire

In the initial phase of the public consultation, the development team received 198 feedback forms from the 2,188 leaflets delivered to residents in January 2023. Of the 198 feedback forms received from the initial phase of the public consultation, 65 were fully supportive of the scheme, 19 were broadly supportive of the scheme, 94 residents objected to the scheme and 20 were of no opinion.

Following the redesign, a new brochure detailing the changed plans and inviting recipients to a public information event was sent out on the 7th October 2024. The development team received 17 completed feedback forms from attendees at the Public Information event and via the website following the brochure mail-out, a significant decrease from the response to the initial phase of the public consultation.

The feedback form to the brochure included two multiple choice tick box questions and a space for additional comments.

Question one: Has this local resident brochure been helpful in understanding our proposal?

YES	NO	NOT SURE/ NO ANSWER
7	3	7

The results of question one demonstrates the overall effectiveness of the brochure and public information event.

Question two: With regards to the proposals you have read/heard about, are you:

FULLY SUPPORT	BROADLY SUPPORT	IN OBJECTION	OF NO OPINION/NO ANSWER
3	1	8	5

Question three: Additional comments

Fourteen feedback forms in the second phase of the consultation contained additional comments.

Appendix 5 contains those comments in full, in addition to the Applicant's response.

The themes covered the following topics:

- General support for renewable energy
- Loss of agricultural land
- Potential visual impact
- Potential impact on biodiversity
- Potential impact on flooding

The Applicant also received feedback at the public information event. This feedback is detailed in

Appendix 6.

6.1 Summary of Feedback

The consultation programme engaged residents that live in close proximity to the proposed development site. The majority of those that completed a feedback form felt that the brochure had been "helpful".

Overall, the consultation feedback received via the submitted feedback was mixed. Of the 17 local residents' that completed a feedback form 3 were in full support of the proposal, 1 was broadly supportive, 7 objected to it and 5 were of no opinion. However, the applicant encountered significantly less opposition to the proposed development following the redesign, suggesting that the majority of residents' felt their concerns had been addressed through the public consultation process.

6. How feedback influenced the scheme design

In response to issues raised during the initial public consultation process, the design of the scheme was amended as follows:

- Reduction in land area utilised for the proposed development by over 20%.
- Reduction in the number of solar modules proposed to be installed by over 10%.

- Removal of solar modules in the most visually sensitive areas.
- Increased landscaping and planting proposed to improve screening of the site to further reduce visual impacts.
- Increased levels of biodiversity net gain (BNG) and introduced a public green space.
- Improved community benefit fund offering to support projects in the local community.

7. Conclusion

The Applicant undertook a comprehensive programme of public consultation, which engaged with residents and key community and political stakeholders. Following the initial phase of public consultation, the Applicant carefully listened to the feedback of the local community and used the feedback to make a variety of amendments to the Proposed Development.

Given that the number of brochures informing residents of the redesign was the same as the number of leaflets sent out in the initial phase of the consultation, it is evident that the updated scheme has resulted in less opposition to the Proposed Development.

8. Appendices

- **Appendix 1:** Public Exhibition Boards
- **Appendix 2:** Local Resident Invite Brochure
- **Appendix 3:** Local Resident Brochure and Leaflet Distribution Area
- **Appendix 4:** Website Home Page
- **Appendix 5:** Comments received via the brochure feedback form question 3 and Applicant's response.
- **Appendix 6:** Comments received at the Public Information Event

Appendix 1: Public Exhibition Boards



INTRODUCING GRIMTHORPE SOLAR FARM

Following a period of public consultation, Enviromena is preparing to submit a planning application to Barnsley Metropolitan Borough Council for a solar farm located north west of Grimthorpe, east of Cudworth and south-west of Brierley.

The proposals were first introduced to the public in January 2023. After listening to local residents we have improved our proposals for Grimthorpe Solar Farm in the following ways:

- Reduction in land area utilised for the proposed development by over 20%.
- Reduction in the number of solar modules proposed to be installed by over 10%.
- Removal of solar modules in the most visually sensitive areas.
- Increased landscaping and planting proposed to improve screening of the site to further reduce visual impacts.
- Increased levels of biodiversity net gain (BNG) and introduced a public green space.
- Improved community benefits fund offering to support projects in the local community.



INTRODUCING ENVIROMENA

Enviromena, the developer of this project, is a clean energy solutions company providing safe, affordable, and reliable solutions for growing sustainable power demands.

Headquartered in the UK, Enviromena has more than 16 years' global experience in developing, designing, constructing, managing, and operating ground-breaking renewable energy projects.

Enviromena have installed over 17,000 power systems globally and currently manages, operates, and maintains over 300 megawatts (MW) of renewable energy assets including solar and energy storage projects. Additionally, Enviromena currently has a further 3GB in construction and development across the UK and Italy.



THE BENEFITS

- The solar farm will create enough clean, renewable energy to power approximately 25,150 homes per annum. The solar farm would avoid approximately 14,060 tonnes of CO2 annually compared to other non-renewable forms of energy generation.
- The solar farm will assist Barnsley Metropolitan Borough Council in reducing greenhouse gas emissions in line with national and local targets in response to the Climate Emergency.
- The project will deliver net beneficial gains for biodiversity. Solar farm installations have a small footprint on the land they occupy, leaving considerable scope for biodiversity enhancements. Research has shown that responsibly managed solar farms can play an important role in reducing the decline in biodiversity.
- Existing trees and hedgerows will be retained and protected and supplemented by additional native species planting to support local habitats as part of a wider ecological network.
- The development of green projects like Grimthorpe Solar Farm also create business opportunities and economic activity which contribute to the country's green recovery.
- We are committed to using local suppliers and contractors during construction and long-term operation of the project, which will benefit the local economy, and provide jobs to people in the local area.
- The proposal does not require the stopping or diversion of any public rights of way.
- This is a temporary development, allowing the land to rest for the period of operation up to 40 years. Decommissioning and full restoration of the site at the end of development will be in planning condition.
- The project does not receive subsidies.



EVOLVING CONCEPT DESIGN

KEY

- Unfenced Boundary
- Site Boundary
- Access Route
- Customer Substation
- Site Access
- Functional Status
- PI Step
- Drainage
- Track





EXAMPLE ELEMENTS OF A SOLAR FARM





COMMUNITY BENEFITS

We believe that it's right that the community closest to a solar farm is able to benefit from it. In addition, we believe that the community itself is best placed to say what the community benefits should be.

If you have an idea for a sustainable community-based scheme or project, then please share your idea with us on this board.



CONSTRUCTION AND ACCESS

It is anticipated that the average number of deliveries to be made by HGVs during the construction period equates to X movements per day.

Once operational, traffic movements are expected to be minimal. Movements would comprise one van accessing the site two times per month i.e. X two-way vehicle movements per month.

A Transport Note will be prepared, including the proposed access route, to accompany the planning application and a full Construction Traffic Management Plan (CTMP) will be put in place prior to the commencement of the project.



GRIMTHORPE PLANNING CONSIDERATIONS

Barnsley Local Plan 2019

The development plan includes policies for steering decisions on planning applications including the following topics:

- Climate change
- Natural Environment
- Historic Environment
- The economy
- The countryside
- Renewable energy
- Public rights of way

The development plan policies may include specific criteria against which our proposal will be assessed, for example Policies SP3 and CP2 which covers renewable energy proposals.

The Council requires a range of reports and surveys to be provided with the planning application. These are undertaken by qualified professionals and will be the subject of public consultation. Those documents are scrutinised by councillors such as the Environment Agency, Natural England, and Historic England, as well as specialist officers within the Council. They are likely to include:

- Various technical drawings
- Tree survey
- Ecology surveys
- Landscaping and visual assessment
- Agricultural land survey
- Glint and glare report
- Heritage and archaeology report
- Access and highways report

As well as the development plan, the local planning authority will be looking at other sources of policy guidance including national government policy.

If you have any questions about the planning process, please ask our representatives.

Appendix 2: Local Resident Invite Brochure



ENVIROMENA

GRIMETHORPE SOLAR FARM
Providing clean, green energy for Barnsley

Invitation to a Public Information Event:
Thursday 17 October from 2pm to 7pm
St Luke's Church Grimethorpe, St Lukes Rd, Grimethorpe, Barnsley S72 7FN



GRIMETHORPE SOLAR FARM

Following a period of public consultation, Enviromena is preparing to submit a planning application to Barnsley Metropolitan Borough Council for a solar farm located north-west of Grimethorpe, east of Cudworth and south-west of Brierley.

The proposals were first introduced to the public in January 2021. After listening to local residents we have improved our proposals for Grimethorpe Solar Farm in the following ways:

- Reduction in land area utilised for the proposed development by over 20%.
- Reduction in the number of solar modules proposed to be installed by over 10%.
- Removal of solar modules in the most visually sensitive areas.
- Increased landscaping and planting proposed to improve screening of the site to further reduce visual impacts.
- Increased levels of biodiversity net gain (BNG) and introduced a public green space.
- Improved community benefit fund offering to support projects in the local community.

THE BENEFITS



- The solar farm will create enough clean, renewable energy to power approximately 25,150 homes per annum. The solar farm would avoid approximately 14,060 tonnes of CO₂ annually compared to other non-renewable forms of energy generation.
- The solar farm will assist Barnsley Metropolitan Borough Council in reducing greenhouse gas emissions in line with national and local targets in response to the Climate Emergency.
- The project will deliver net beneficial gains for biodiversity. Solar farm installations have a small footprint on the land they occupy, leaving considerable scope for biodiversity enhancements. Research has shown that responsibly managed solar farms can play an important role in reducing the decline in biodiversity.
- Existing trees and hedgerows will be retained and protected and supplemented by additional native species planting to support local habitats as part of a wider ecological network.
- The development of green projects like Grimethorpe Solar Farm also create business opportunities and economic activity which contribute to the country's green recovery.
- We are committed to using local suppliers and contractors during construction and long-term operation of the project, which will benefit the local economy, and provide jobs to people in the local area.
- The proposal does not require the stopping or diversion of any public rights of way.
- This is a temporary development, allowing the land to rest for the period of operation up to 40 years. Decommissioning and full restoration of the site at the end of life of the development will be secured via planning condition.
- The project does not require Government subsidies.

CLIMATE EMERGENCY

In 2019, the UK became the first country in the world to declare a Climate Emergency. It has subsequently committed to reach Net Zero carbon emissions by 2050. In October 2021 the UK Government set out its Net Zero commitments and obligations in the 'Net Zero Strategy: Build Back Greener'. Amongst a number of initiatives, it confirms that by 2035 all our electricity will need to come from low carbon sources.

Support for renewable energy was strengthened in 2019 when a Climate Emergency was declared by Barnsley Metropolitan Borough Council. The Council has an ambition for the borough to be net zero by 2045.

ABOUT ENVIROMENA

Enviromena, the developer of this project, is a clean energy solutions company providing safe, affordable, and reliable solutions for growing sustainable power demands.

Headquartered in the UK, Enviromena has more than 15 years' global experience in developing, designing, constructing, managing, and operating ground-breaking renewable energy projects.

Enviromena currently manages, operates, and maintains over 300 megawatts (MW) of renewable energy assets including solar and energy storage projects. Additionally, Enviromena currently has a further 3GW in construction and development across the UK and Italy.



GET INVOLVED

We invite you to provide feedback on our proposals in the following ways:

1 Attend our Public Information Event on **Thursday 17 October** from 2pm to 7pm at St Luke's Church Grimethorpe, St Lukes Rd, Grimethorpe, Barnsley S72 7FN.

Having listened the opinions of local residents during the public consultation process, we felt it was appropriate to amend our proposals. We would like to invite you to a Project Information Event where you will be able to discuss with the development team our amended proposals.

2 Fill in the feedback form that accompanies this public consultation brochure.

Please read through the leaflet and provide feedback to us by way of the free post feedback form that came with the brochure.

3 Visit the dedicated public consultation website: www.grimethorpesolarfarm.co.uk

We have set up a dedicated website, where you can find information about our proposals and provide feedback.

FREQUENTLY ASKED QUESTIONS

WHY SOLAR?

The Climate Emergency, the cost of living crisis and the energy crunch are all linked by how we generate, use and supply energy. We urgently need to generate energy from new, low cost, low carbon sources and solar is the lowest cost and quickest to deploy of all energy sources. It is currently one-ninth the cost of gas and less than one third of the cost of nuclear.

The proposed solar farm will generate renewable electricity integral to the UK Government's overarching policy to provide significant reductions in national greenhouse gas emissions and improved energy security. The Government's Energy Security Strategy (2022) proposed a five-fold increase in solar by 2035.

Grimethorpe Solar Farm will help the UK reach this target and create a greener, cleaner energy future for Barnsley. We are committing long-term funding to bring forward renewable energy generation and low carbon programmes which we believe will help deliver a more sustainable future.

WHY HERE?

The site for Grimethorpe Solar Farm has been carefully selected as part of a detailed site assessment process. Considerations have been made on all the following, to ensure this site is the most appropriate one for our scheme: grid capacity, land availability, heritage assets, flood risk and agricultural land quality.

WILL THE DEVELOPMENT CHANGE THE LAND CLASSIFICATION?

The solar farm is a temporary development and will not change the land classification. Once the solar farm is no longer in operation it will be decommissioned and the land will return to its previous agricultural usage.



WILL THE PROPOSED DEVELOPMENT HARM WILDLIFE?

There is no evidence that solar farms have a negative impact on wildlife. In fact, wildlife thrives within the sites when managed sensitively.

We are committed to significant net biodiversity gain at Grimethorpe Solar Farm through the creation of new habitats to support local wildlife. Existing hedgerows will be strengthened and new hedgerows will be planted to improve habitat connectivity across the site. We will set aside a significant proportion of the land for habitats to support mammals, birds and invertebrates.

Further ecological enhancement measures such as bird boxes and bat boxes will be placed within the site to encourage those populations to prosper.

DO SOLAR FARMS EMIT NOISE?

No. Solar panels have no moving parts and emit no sound. Inverters and transformers can emit very low-level sound, but these are sited away from houses and cannot be heard from more than a few metres away.

ARE SOLAR FARMS A THREAT TO FOOD SECURITY?

The UK Food Security Report (2021) found that "the biggest medium to long term risk to the UK's domestic production comes from climate change and other environmental pressures like soil degradation, water quality and biodiversity". Solar farms currently account for 0.08% of total land use in the UK (Solar Energy UK 2022). The Government targets for a fivefold increase in solar would result in 0.3% of the UK land area being used by solar (Carbon Brief, 2022). This is the equivalent to around half of the space used by golf courses.



GRIMETHORPE SOLAR FARM

HAVE YOUR SAY

Please take your time to consider the information within this brochure and don't hesitate to contact a member of our team should you have any questions or matters you need to be clarified.

Please provide any comments you have on the proposal by email or via the feedback form on the website. We would be grateful if you could complete the feedback form (including your contact details) for the purpose of providing feedback to the Council.

For further information, please do not hesitate to email: feedback@alpacacommunications.com

REGISTER FOR UPDATES

Please visit www.grimethorpesolarfarm.co.uk where information about our proposals will be updated, and where you can register to receive updates.



FEEDBACK FORM

To return your completed feedback form please tear it from the brochure, insert into the enclosed pre-paid envelope and pop it in the post by **Thursday 24 October 2024**. Alternatively, you can return your form via email to feedback@alpacacommunications.com

Title: _____ Name: _____
 Address: _____ Postcode: _____
 Email: _____ Telephone: _____

- Has this brochure been helpful in understanding our proposal? Yes No Not sure
- Do you support the proposals you have read about within this brochure?
 Fully support Broadly support Do not support Undecided
- Please use this space to provide any comments on the proposal. We would welcome your feedback on all aspects of the proposals outlined in the brochure.

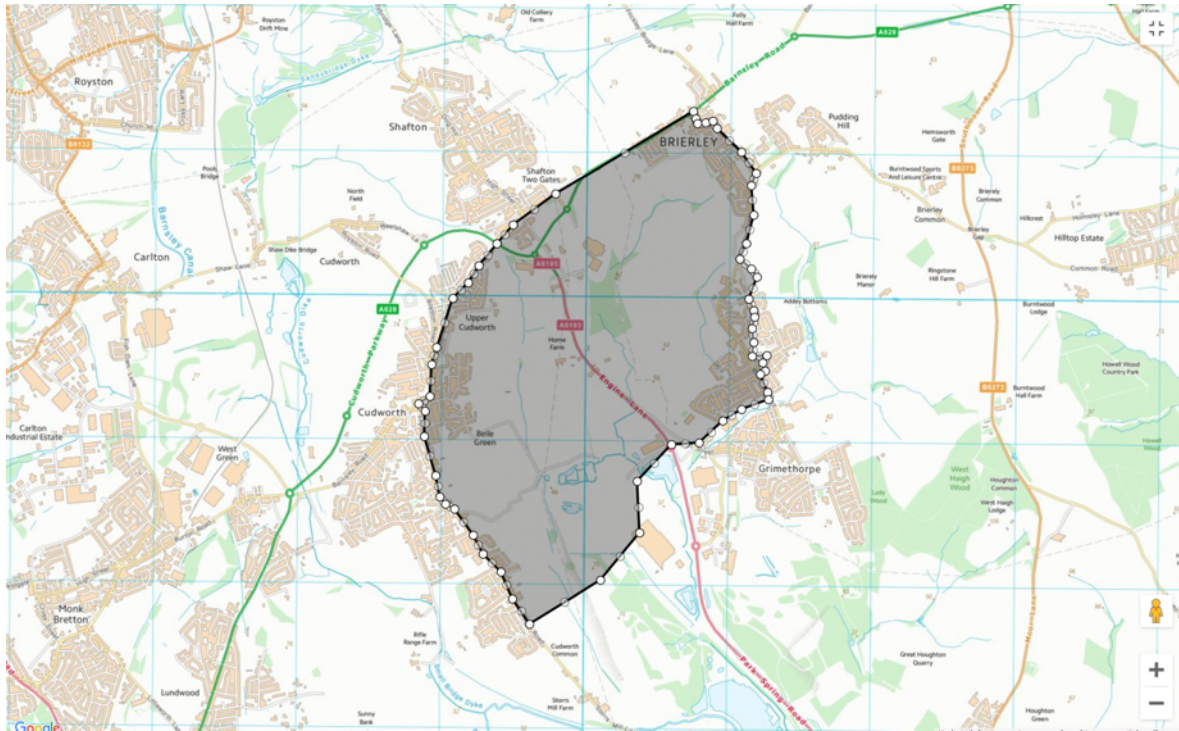
By filling in this form you are agreeing that the Environment Project Team can hold and process your personal data in relation to this public consultation exercise only. Your data will be stored in line with the GDPR and will not be shared or published without your consent. Your contact details will not be listed on the planning application documentation.

Instructions
 To return your feedback form, please fold and put it in the post box.
 If you'd like more space to share your thoughts, send us an email, or text with your comments written on the front. You don't need any further address or stamp.
 Any queries or problems? Get in touch via feedback@alpacacommunications.com.

FOOD HERE

Freeport
ALPACA COMMUNICATIONS LIMITED

Appendix 3: Local Resident Brochure and Leaflet Distribution Area



The leaflet that was sent on 23rd January 2023 and the public information event invite brochure that was sent on 7th October 2024 used the distribution map above. The map covers 2,152 residential households and 36 businesses.

Appendix 4: Website Home Page



Providing Clean Energy for Barnsley

Following a period of public consultation, Enviromena is preparing to submit a planning application to Barnsley Metropolitan Borough Council for a 64 MW solar farm located north-east of Grimethorpe, east of Colverth and south-west of Boleby.

The proposals were first introduced to the public in January 2023. After listening to local residents we have improved our proposals for Grimethorpe Solar Farm in the following ways:

- Reduction in land area utilised for the proposed development by over 30%.
- Reduction in the number of solar modules proposed to be installed by over 10%.
- Removal of solar modules in the most visually sensitive areas.
- Increased landscaping and planting proposed to improve screening of the site to further reduce visual impacts.
- Increased levels of biodiversity net gain (BNG) and introduced a public green space.
- Improved community benefit fund offering to support projects in the local community.



[SITE LAYOUT PLAN](#)

[SITE LOCATION PLAN](#)

Where is the proposed site?



Benefits of Grimethorpe Solar Farm

- The solar farm will create enough clean, renewable energy to power approximately 10,000 homes per annum. The solar farm would avoid approximately 16,000 tonnes of CO2 annually compared to other non-renewable forms of energy generation.
- The solar farm will avoid Barnsley Metropolitan Borough Council in reducing greenhouse gas emissions to line with national and local targets in response to the Climate Emergency.
- The project will deliver net beneficial gains for biodiversity. Solar farm installations have a small footprint on the land they occupy, leaving considerable scope for biodiversity enhancements. Research has shown that responsibly managed solar farms can play an important role in reducing the decline in biodiversity.
- Existing trees and hedgerows will be retained and protected and supplemented by additional native species planting to support local habitats as part of a wider ecological network.
- The development of green projects like Grimethorpe Solar Farm also creates business opportunities and economic activity which contribute to the country's green recovery.
- We are committed to using local suppliers and contractors during construction and long-term operation of the project, which will benefit the local economy, and provide jobs to people in the local area.
- The proposal does not require the stopping or diversion of any public rights of way.
- This is a temporary development, allowing the land to rest for the period of operation up to 40 years. Decommissioning and full restoration of the site at the end of life of the development will be secured via planning conditions.
- The project does not require Government subsidies.



[LEARN MORE](#)

Enviromena, the developer of this project, is a clean energy solutions company providing safe, affordable, and reliable solutions for growing sustainable power demands. Headquartered in the UK, Enviromena has more than 10 years' global experience in developing, designing, constructing, managing, and operating ground-breaking renewable energy projects.

Enviromena has installed over 10000 green systems globally and currently manages, operates, and maintains over 300 megawatts (MW) of renewable energy assets including solar and energy storage projects. Additionally, Enviromena currently has a further 200+ in construction and development across the UK and Italy.

FAQ

- Why Solar?
- Why Here?
- Will the development change the land classification?
- Do solar farms emit noise?
- Are solar farms a threat to food security?
- Will the proposed development harm wildlife?
- What is biodiversity net gain?
- What about energy versus food security?
- Does this proposal open up the land to future housing proposals?

Public Consultation Event

We will be holding a Public Information Event on Thursday 17 October 2024 from 9am to 3pm at St Luke's Church Grimethorpe, St Luke's, Grimethorpe, Barnsley S75 7YH.



Contact Us

If you wish to contact us or require further information, please feel free to use the form (subject to the rights) or by the following methods:
Email address: feedback@enviromena.com
Prepared: ALPACA COMMUNICATIONS LTD

Name (required)
First Name Last Name
Email (required)
Email
Subject
Subject
Message
Message
[SEND](#)

Appendix 5: Comments received via feedback form question 3 and Applicant's response in the second phase of the public consultation

COMMENTS RECEIVED	APPLICANT'S RESPONSE
Can I have any updates please	The Applicant will keep the consultee updated.
You are making money , that is your prime objective , there will be not enough food to feed the people of the UK because you know you are using land that produced food , when Russia takes over the Ukraine one of the biggest grain producers in the world Britain will not have any where to import grain from and it will not have land to grow in because of your damned greed .	<p>The application for this proposal is only 40 years and conditions will be set should permission be granted that will guarantee the land will be returned to agricultural usage after 40 years. The proposals would give the land a period of rest, overall, improving soil quality.</p> <p>The proposed development does not seek to change the use of the land. It will therefore remain as agricultural land. Sheep grazing is also being considered as part of the application.</p>
If I could register for to receive updates please.	The Applicant will keep the consultee updated.
Do not want near residential areas	The Applicant has carefully considered the location of the Proposed Development. The site was chosen after a comprehensive search for sites.
I do not want this proposal to be successful as it will have a detrimental effect on the environment in Grimethorpe. We have beautiful countryside all around us and it will have consequences on all the village.	<p>Significant biodiversity improvements are a key benefit of the proposed Solar Farm, and these are detailed within the Ecological Assessment Report, Biodiversity Management Plan and Biodiversity Net gain calculator forming part of the application.</p> <p>The application is accompanied by a Landscape and Visual Impact Assessment, which assess the visual impact of the proposed development and the mitigation measures proposed to minimise harm. Any negative landscape impact would be balanced against the benefits of renewable energy.</p>
Enviromena seem v. professional. The representatives here were well informed and explained everything clearly. The proposals look smart & vital for increasing Barnsley's renewable energy targets.	The Applicant welcomes this comment.
If we didn't already have a 'pylon' in place, would you still want to use this area? It's too large and too close to residential properties and schools. It's to be placed on green belt and where it will be devastating to our wildlife. It has taken 40 years to establish self since the closure of the mine, coal and power station, to be destroyed. Where is the green in that?	<p>The Applicant has carefully considered the location and size of the Proposed Development. The site was chosen after a comprehensive search for sites.</p> <p>Significant biodiversity improvements are a key benefit of the proposed Solar Farm, and these are detailed within the Ecological Assessment Report, Biodiversity Management Plan and Biodiversity Net gain calculator forming part of the application.</p>

<p>Solar farms are springing up all over the open spaces, they spoil the outlook for everyone. The land used will be spoilt for its life time. Local wildlife will pay the cost of people's material greed. Let us keep our green open land for our peace of mind and health!!</p>	<p>The application is accompanied by a Landscape and Visual Impact Assessment, which assess the visual impact of the proposed development and the mitigation measures proposed to minimise harm. Any negative landscape impact would be balanced against the benefits of renewable energy.</p> <p>Significant biodiversity improvements are a key benefit of the proposed Solar Farm, and these are detailed within the Ecological Assessment Report, Biodiversity Management Plan and Biodiversity Net gain calculator forming part of the application.</p> <p>The application for this proposal is only 40 years and conditions will be set should permission be granted that will guarantee the land will be returned to agricultural usage after 40 years. The proposals would give the land a period of rest, overall, improving soil quality.</p>
<p>I retired and moved into Grimethorpe to the house we have now because of the view we were getting. This solar farm will ruin this. It's been proved to be no good for nature. It's been proved to be no good for the soil after its time limit.</p>	<p>The application is accompanied by a Landscape and Visual Impact Assessment, which assess the visual impact of the proposed development and the mitigation measures proposed to minimise harm. Any negative landscape impact would be balanced against the benefits of renewable energy.</p> <p>There is overwhelming evidence that solar power works and is a benefit to the environment as a renewable alternative to fossil fuels.</p> <p>Significant biodiversity improvements are a key benefit of the proposed Solar Farm, and these are detailed within the Ecological Assessment Report, Biodiversity Management Plan and Biodiversity Net gain calculator forming part of the application.</p> <p>The application for this proposal is only 40 years and conditions will be set should permission be granted that will guarantee the land will be returned to agricultural usage after 40 years. The proposals would give the land a period of rest, overall, improving soil quality.</p>
<p>Does not benefit our village</p>	<p>As a responsible developer committed to working with the communities it invests in, the Applicant is pleased to work with the community to contribute funds to sustainable community-based projects.</p> <p>The Applicant encourages local residents to continue to come forward with community benefit suggestions. Further discussions will take place prior to allocation the funds for the community benefit scheme.</p>

<p>How many inverters and what size are they. Flood concerns? Thanks</p>	<p>A Flood Risk Assessment has been undertaken for the site and considers the surface water drainage of the site. Evidence accumulated from the many hundreds of solar farms already in operation around the UK, and from the site’s own Flood Risk Assessment show that Proposed Development will have minimal impact on water flows.</p>
<p>Particular interest was an impact of construction traffic during development stage. Initial impression is that satisfactory considerations has been given to this but would be interested in seeing future proposals as planning phase progresses</p>	<p>A Construction Traffic Management Plan (CTMP) has been prepared and submitted with the planning application. This will detail access. This will be reviewed by the Highways Authority during the consultation phase. Once agreed, it will form a condition of any planning permission and will be implemented during the construction phase. The aim of the CTMP is to reduce the impact of the construction phase on the highway network.</p>
<p>This proposal will affect quality of life, house price, visual impact etc. What are the benefits of this? And for homeowners close by? A lot of us moved here for the nature/ green land</p>	<p>Potential impact on the value of property is not a material planning consideration.</p> <p>As a responsible developer committed to working with the communities it invests in, the Applicant is pleased to work with the community to contribute funds to sustainable community-based projects. The Applicant encourages local residents to continue to come forward with community benefit suggestions. Further discussions will take place prior to allocation the funds for the community benefit scheme.</p> <p>Significant biodiversity improvements are a key benefit of the proposed Solar Farm, and these are detailed within the Ecological Assessment Report, Biodiversity Management Plan and Biodiversity Net gain calculator forming part of the application.</p> <p>The application is accompanied by a Landscape and Visual Impact Assessment, which assess the visual impact of the proposed development and the mitigation measures proposed to minimise harm. Any negative landscape impact would be balanced against the benefits of renewable energy.</p>
<ul style="list-style-type: none"> - Concerned of proximity of boundary to houses. Back of Shireoaks Way & Stacey crescent - Water run off from fields already cause flooding of gardens - Disruption of wildlife during constructions, rats already exist in fields – pest control - Any effects on house prices - Local investment remains local – not passed to other areas 	<p>The Applicant has carefully considered the location and size of the Proposed Development. The site was chosen after a comprehensive search for sites.</p> <p>A Flood Risk Assessment has been undertaken for the site and considers the surface water drainage of the site. Evidence accumulated from the many hundreds of solar farms already in operation around the UK, and from the site’s own Flood Risk Assessment show that Proposed Development will have minimal impact on water flows.</p> <p>Significant biodiversity improvements are a key benefit of the proposed Solar Farm, and these are detailed within the Ecological Assessment Report,</p>

	<p>Biodiversity Management Plan and Biodiversity Net gain calculator forming part of the application.</p> <p>Potential impact on the value of property is not a material planning consideration.</p> <p>Noted. The Applicant encourages local residents to continue to come forward with community benefit suggestions. Further discussions will take place prior to allocation the funds for the community benefit scheme.</p>
<p>Will any surrounding land owners gain financial reward from compulsory land purchase?</p>	<p>There will be compulsory land purchases as part of the project.</p>
<p>We do not need these ugly unsightly things.</p>	<p>The application is accompanied by a Landscape and Visual Impact Assessment, which assess the visual impact of the proposed development and the mitigation measures proposed to minimise harm. Any negative landscape impact would be balanced against the benefits of renewable energy.</p>
<p>We have been made aware of the proposed solar farm at Grimethorpe, adjacent to our School.</p> <p>HCAAT are the Academy Trust that Milefield Primary School, Grimethorpe, are part of. We would be interested, if the proposed solar farm is approved, understanding more, and looking at how we can work together and allow our pupils to be involved in the project to link to hot topics such as renewables and sustainability.</p> <p>As a Trust, and many more organisations no doubt, we are starting our sustainably journey! As the solar farm is proposed to be really close to our School, we would love to be involved!</p> <p>If you could keep my details on your records that would be great.</p>	<p>Noted. The Applicant encourages local residents and organisations to continue to come forward with community benefit suggestions. Further discussions will take place prior to allocation the funds for the community benefit scheme.</p>

Appendix 6: Comments received at the Public Consultation Event

COMMENTS RECEIVED	APPLICANT'S RESPONSE
Finance a miner's welfare for the 21 st century at the old stute site.	Noted. The Applicant encourages local residents to continue to come forward with community benefit suggestions.
Planting in high street.	Noted. The Applicant encourages local residents to continue to come forward with community benefit suggestions.
Investigate the possibility of geothermal energy from the underground mine workings as part of green energy generation.	Noted. The Applicant encourages local residents to continue to come forward with community benefit suggestions.
Outreach work with schools on green energy, habitats etc.	Noted. The Applicant encourages local residents to continue to come forward with community benefit suggestions.