

KEY

Hard Works

Tobermore Hydropave Sienna Duo
208/173 x 300 x 60mm Silver grey
Permeable blocks. In stretcher bond

Tobermore Hydropave Pedesta 100 x
200 x 80mm natural coloured
Permeable pavings laid in herringbone
with charcoal blocks denoting parking
bays

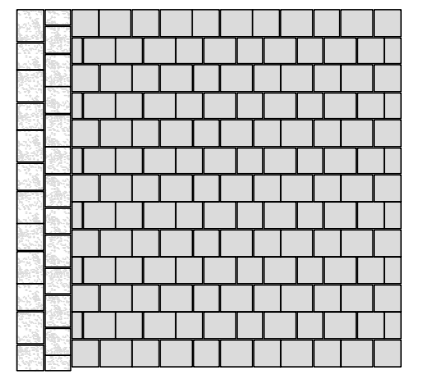
Tobermore Hydropave Sienna Duo
208/173 x 173 x 60mm Graphite
Permeable blocks as inlay detail in single
or double rows.

*All Permeable blocks to be laid on sub
base to BS7533 as per manufacturer
recommendations.

Macadam

150 x 150mm PC Concrete channel as
edge to paving and parking areas

Langley Design Sheldon
bicycle shelter with space for
6No. bikes.



Typical paving layout 1:50
@A1

PL02	22/05/2020	For Planning	SH	GB
PL1	17/10/19	For planning	GB	VM
N/A	10/10/19	For Comment	VM	GB
REV:	DATE:	NOTES:	DR:	CK:



Samuel House, 5 Fox Valley Way, Stocksbridge, Sheffield, S36 2AA

CLIENT:
EDGE PS Limited

PROJECT:
Barnsley Business and Innovation Centre

DRAWING TITLE:
Hard Landscape Details

PROJECT NO.:
SHF.1717.001

DRAWING NO.:
L.D.002

DATE:
Oct 2019

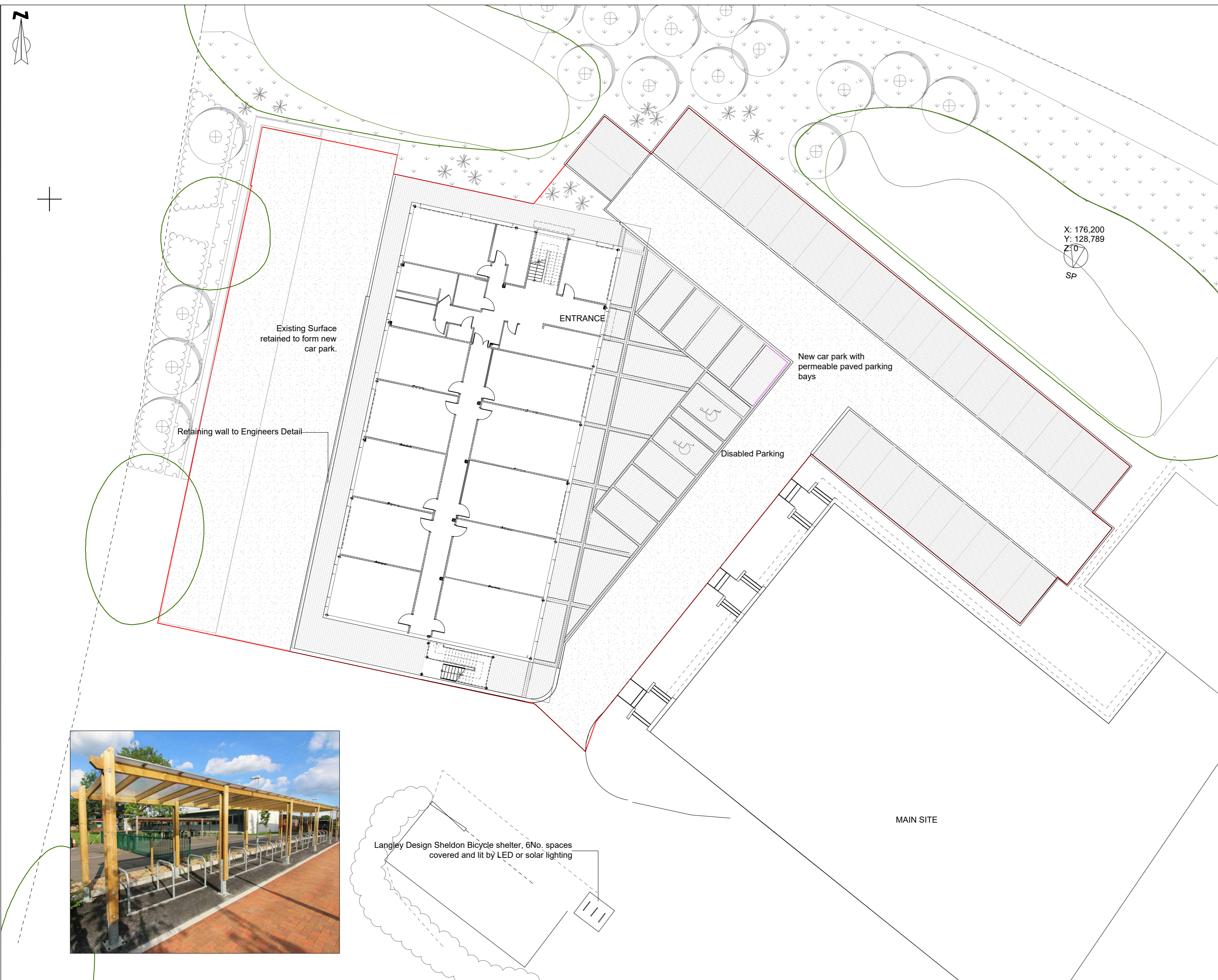
SCALE:
1:200

DRAWN:
VM

CHECKED:
GB

DRAWING STATUS:
For Planning

ISSUE:
PL02



Existing Surface retained to form new car park.

Retaining wall to Engineers Detail

ENTRANCE

New car park with permeable paved parking bays

Disabled Parking

MAIN SITE

Langley Design Sheldon Bicycle shelter, 6No. spaces covered and lit by LED or solar lighting

