



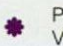
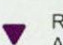


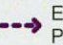
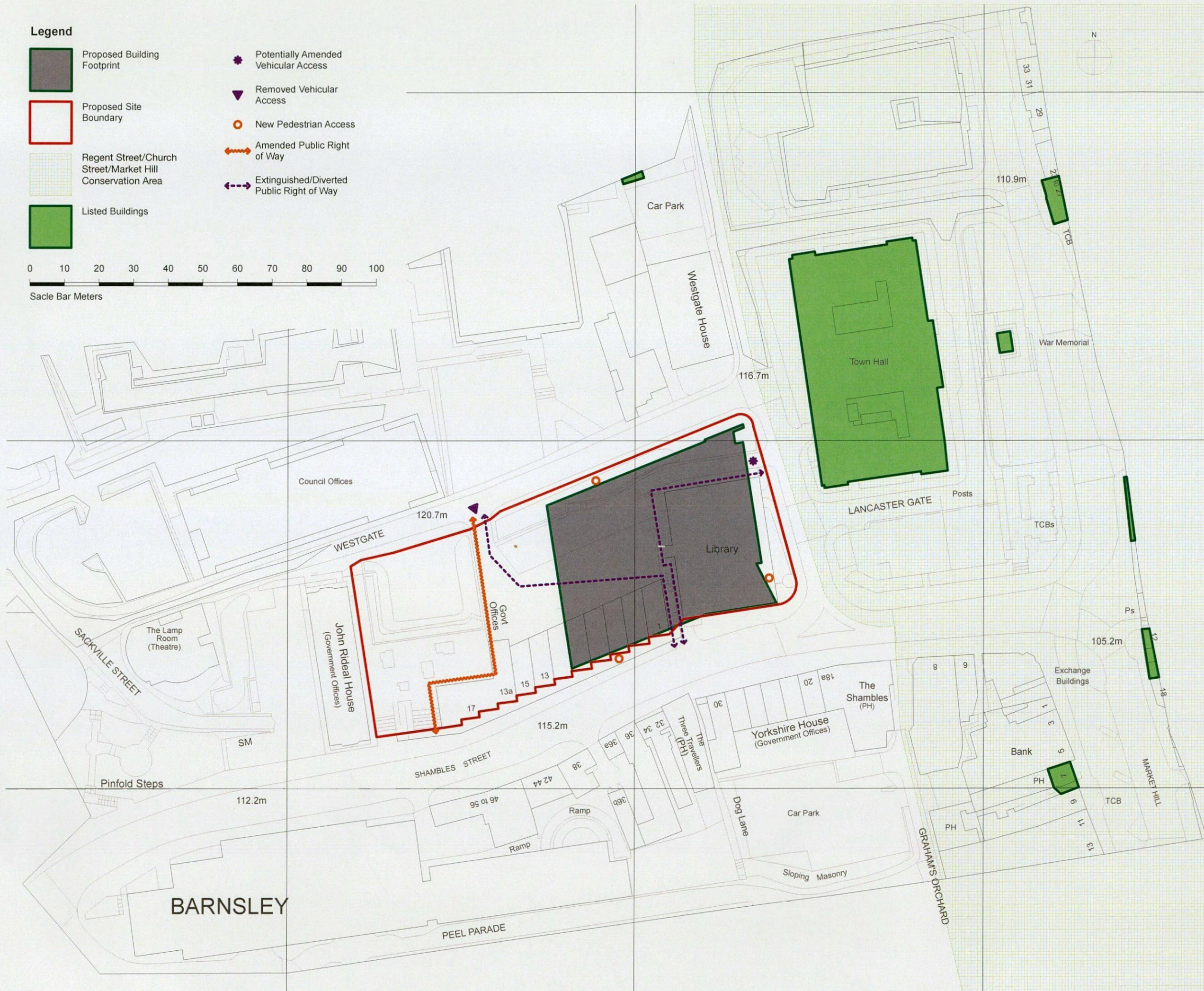
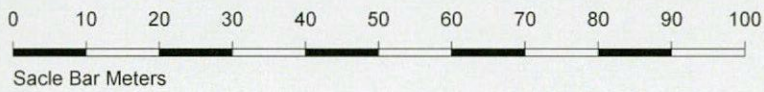


**Legend**

-  Proposed Building Footprint
-  Proposed Site Boundary
-  Regent Street/Church Street/Market Hill Conservation Area
-  Listed Buildings
-  Potentially Amended Vehicular Access
-  Removed Vehicular Access
-  New Pedestrian Access
-  Amended Public Right of Way
-  Extinguished/Diverted Public Right of Way



P2 Planning Issue	SP	MCL	17.12.13
P1 First Issue	RB	MCL	09.12.13
revision/description		drawn	checked date

**Bond Bryan Architects**

the church studio springvale road sheffield S10 1LP

t +44(0)114 266 2040 w www.bondbryan.com  
f +44(0)114 268 7021 tw @bondbryan  
e Barnsley-  
Sixthform@bondbryan.co.uk

**Barnsley College 6th Form Centre**

**BARNSELY COLLEGE**

**Site Location Plan**

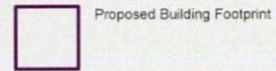
bba project ref	scale	purpose of issue
13-133	1:500 @A1	PRELIMINARY

drawing/document no.	project originator	zone	level	type	role	number	status	rev
	BSC	BBA	Z0	ZZ	DR	A	01001	D5 P2

This document is © Bond Bryan Architects Ltd. If in doubt ASK. Drawing measurements shall not be obtained by scaling. Verify all dimensions prior to construction. Immediately report any discrepancies on this document to the Architect. This document shall be read in conjunction with associated models, specifications and related consultant's documents.



**Legend**



Station	Easting	Northing	Level
M1	434332.426	406516.211	104.812
M2	434225.548	406468.396	110.148
M3	434305.109	406482.615	102.160
M3A	434308.422	406463.798	102.754
M3A1	434310.866	406466.070	102.804
M3B	434258.775	406458.204	102.916
S1	434354.920	406449.230	100.000
S2	434296.202	406421.249	102.722
S3	434229.708	406408.198	102.166
S4	434225.493	406436.073	104.631
S2A	434314.592	406443.212	101.848
S4A	434260.490	406444.470	107.271



P2 Planning Issue JC MC 17.12.13  
 revision/description drawn checked date

**Bond Bryan Architects**  
 the church studio, springdale road, sheffield, S10 1LP  
 t +44(0)114 299 2040 w www.bondbryan.com  
 f +44(0)114 299 7021 tw @bondbryan  
 e bondbryan@bondbryan.co.uk

**Barnsley College 6th Form Centre**

**BARNESLEY COLLEGE**

**Topographical Survey**

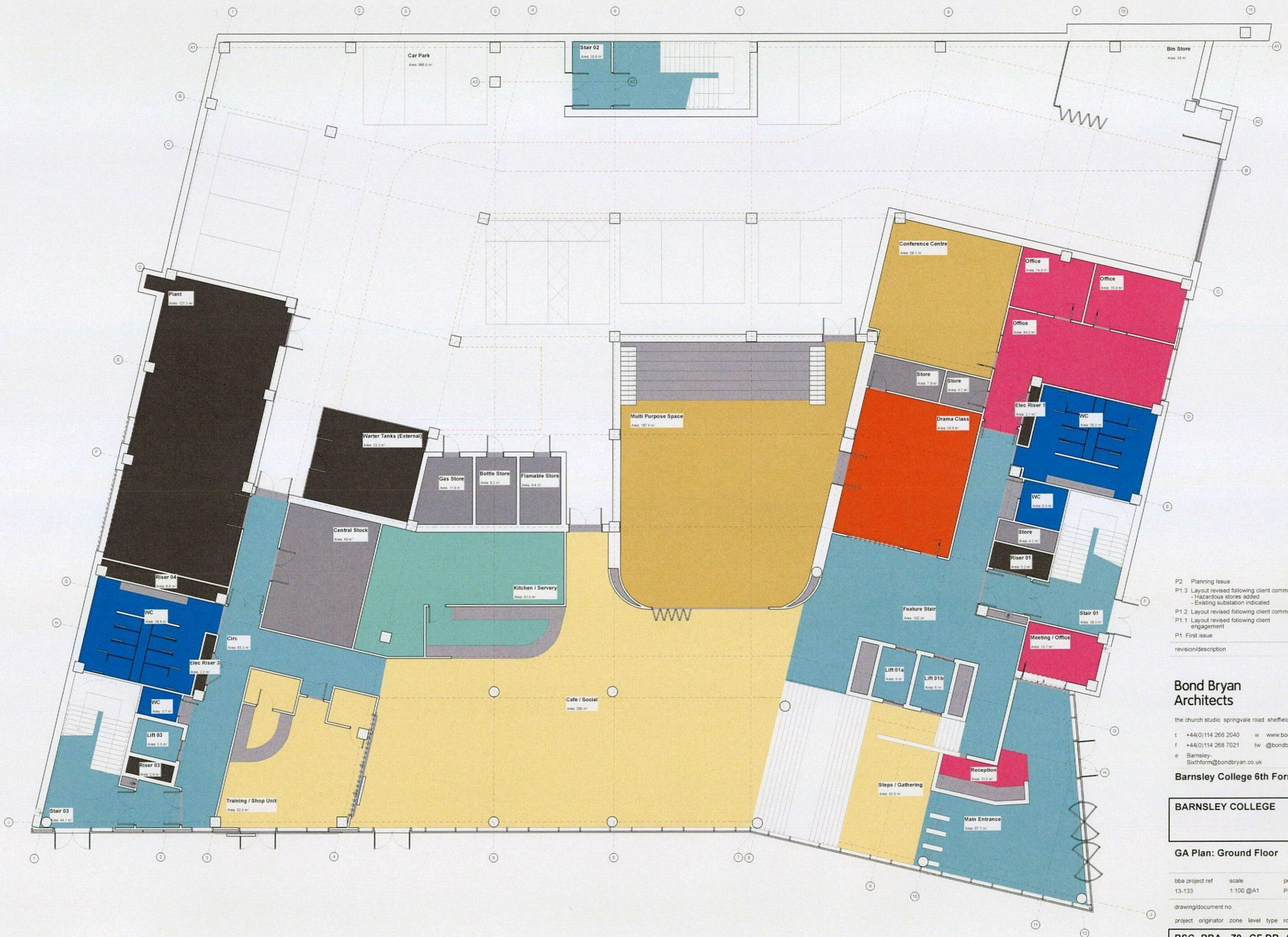
date project ref scale purpose of issue  
 13-133 1:200 @A0 PRELIMINARY

drawing/description no  
 project originator zone level type role number status rev

**BSC BBA Z0 ZZ DR A 01002 D5 P2**

This document is the property of Bond Bryan Architects Ltd. It is issued AS IS. Drawing measurements shall not be obtained by scaling. Verify all dimensions prior to construction. Immediately report any discrepancies on this document to the Architect. This document shall be used in conjunction with associated models, specifications and related consultant's documents.





P2	Planning Issue	SP	MC	17.12.13
P1.3	Layout revised following client comment - Hazardous stores added	MCl	MH	27.11.13
	- Existing substation indicated			
P1.2	Layout revised following client comment	MCl	MH	20.11.13
P1.1	Layout revised following client engagement	MCl	MH	14.11.13
P1	First issue	MCl	MH	29.10.13
	revision/description			drawn checked date

**Bond Bryan Architects**  
 the church studio springvale road sheffield S10 1LP  
 t +44(0)114 266 2040 w www.bondbryan.com  
 f +44(0)114 268 7021 tw @bondbryan  
 e Barnsley-Sixthform@bondbryan.co.uk



**Barnsley College 6th Form Centre**

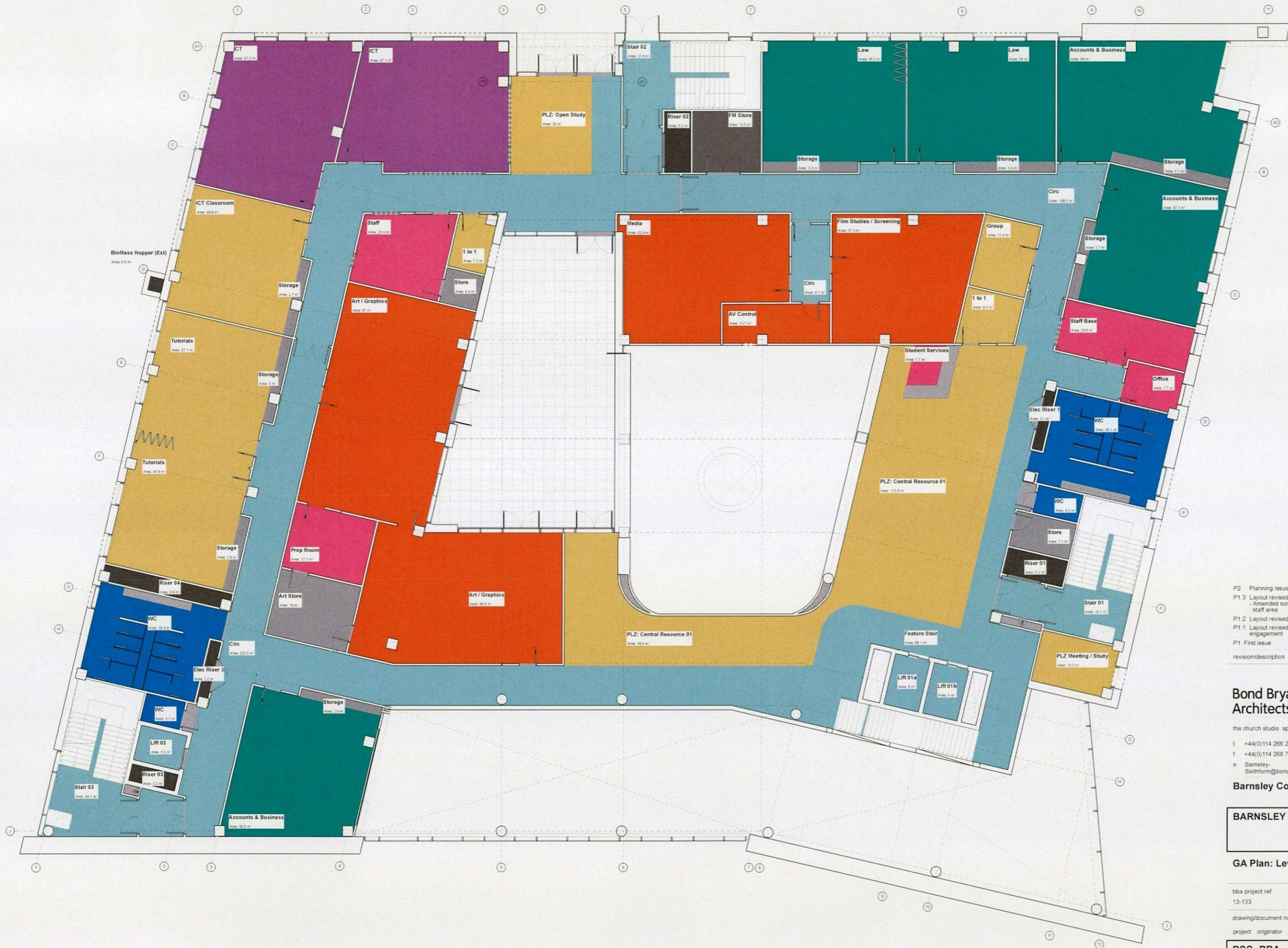
**BARNSELY COLLEGE**

**GA Plan: Ground Floor**

bba project ref	scale	purpose of issue
13-133	1:100 @A1	PRELIMINARY

drawing/document no.	project originator	zone	level	type	role	number	status	rev	
	BSC	BBA	Z0	GF	DR	A	02001	D5	P2

This document is © Bond Bryan Architects Ltd. If in doubt ASK. Drawing measurements shall not be obtained by scaling. Verify all dimensions prior to construction. Immediately report any discrepancies on this document to the Architect. This document shall be read in conjunction with associated models, specifications and related consultant's documents.



P2	Planning issue	SP	MC	17.12.13
P1.3	Layout revised following client comment - Amended screens to North West staff area	MCii	MH	27.11.13
P1.2	Layout revised following client comment	MCii	MH	20.11.13
P1.1	Layout revised following client engagement	MCii	MH	14.11.13
P1	First issue	MCii	MH	29.10.13
	revision/description			drawn checked date

**Bond Bryan Architects**

the church studio · springvale road · sheffield S10 1LP

t +44(0)114 266 2040 w www.bondbryan.com  
 f +44(0)114 266 7021 tw @bondbryan  
 e Barnsley - Sixthform@bondbryan.co.uk

**Barnsley College 6th Form Centre**



**BARNSELY COLLEGE**

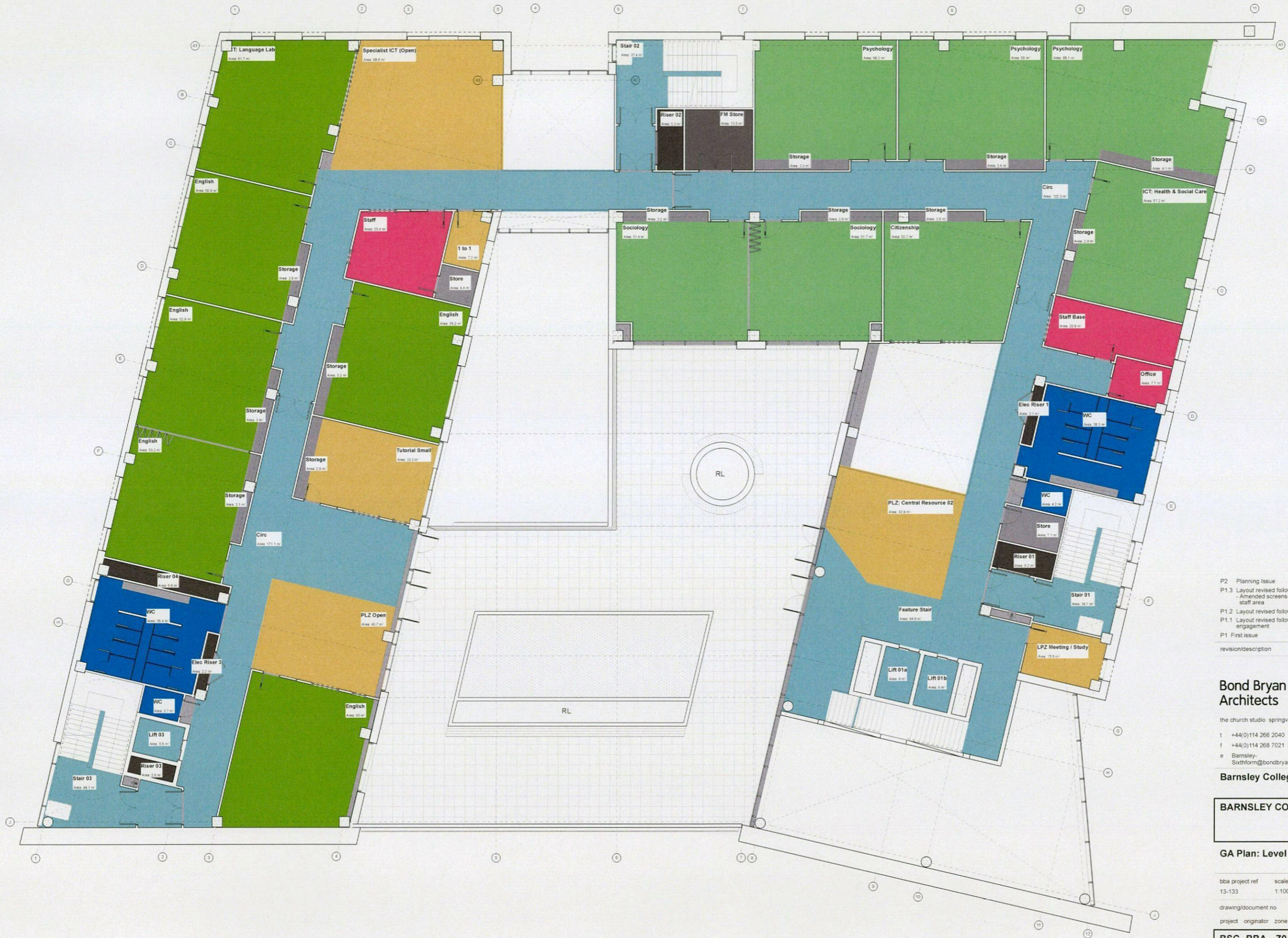
**GA Plan: Level 01**

bba project ref	scale	purpose of issue
13-133	1:100 @A1	PRELIMINARY

drawing/document no.

project	originator	zone	level	type	role	number	status	rev
BSC	BBA	Z0	01	DR	A	02002	D5	P2

This document is © Bond Bryan Architects Ltd. If in doubt ASK. Drawing measurements shall not be obtained by scaling. Verify all dimensions prior to construction. Immediately report any discrepancies on this document to the Architect. This document shall be read in conjunction with associated models, specifications and related consultant's documents.



P2	Planning Issue	SP	MC	17.12.13
P1.3	Layout revised following client comment - Amended screens to North West staff area	MCLI	MH	27.11.13
P1.2	Layout revised following client comment	MCLI	MH	20.11.13
P1.1	Layout revised following client engagement	MCLI	MH	14.11.13
P1	First Issue	MCLI	MH	29.10.13
	revision/description		drawn	checked date

**Bond Bryan Architects**

the church studio springvale road sheffield S10 1LP

t +44(0)114 266 2040 w www.bondbryan.com  
 f +44(0)114 266 7021 tw @bondbryan  
 e Barnsley-  
 Sixthform@bondbryan.co.uk



**Barnsley College 6th Form Centre**

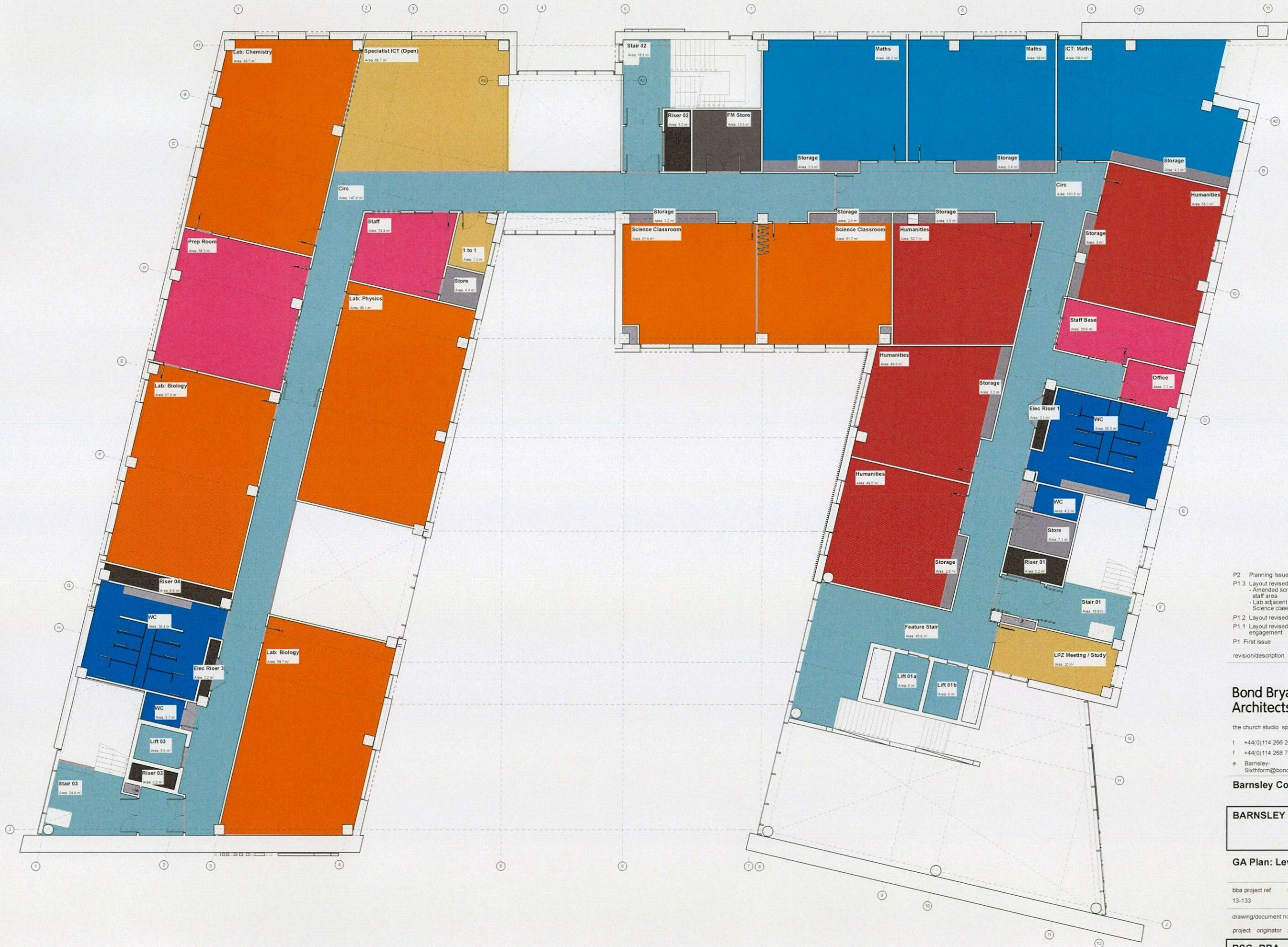
**BARNESLEY COLLEGE**

**GA Plan: Level 02**

bba project ref	scale	purpose of issue
13-133	1:100 @A1	PRELIMINARY

drawing/document no	project originator	zone	level	type	role	number	status	rev
	BSC	BBA	Z0	02	DR	A	02003	D5 P2

This document is © Bond Bryan Architects Ltd. If in doubt ASK. Drawing measurements shall not be obtained by scaling. Verify all dimensions prior to construction. Immediately report any discrepancies on this document to the Architect. This document shall be read in conjunction with associated models, specifications and related consultant's documents.



P2	Planning Issue	SP	MC	17.12.13
P1.3	Layout revised following client comment - Amended screens to North West staff area - Lab adjacent Stair 2 changed to 2no Science classrooms	MCLI	MH	27.11.13
P1.2	Layout revised following client comment	MCLI	MH	20.11.13
P1.1	Layout revised following client engagement	MCLI	MH	14.11.13
P1	First issue	MCLI	MH	29.10.13
	revision/description		drawn	checked date

**Bond Bryan Architects**

the church studio springvale road sheffield S10 1LP

t +44(0)114 266 2040 w www.bondbryan.com  
f +44(0)114 268 7021 tw @bondbryan  
e Barnsley-  
Sixthform@bondbryan.co.uk



**Barnsley College 6th Form Centre**

**BARNESLEY COLLEGE**

**GA Plan: Level 03**

bba project ref	scale	purpose of issue
13-133	1:100 @A1	PRELIMINARY

drawing/document no	project	originator	zone	level	type	role	number	status	rev
	BSC	BBA	Z0	03	DR	A	02004	D5	P2

This document is © Bond Bryan Architects Ltd. If in doubt ASK. Drawing measurements shall not be obtained by scaling. Verify all dimensions prior to construction. Immediately report any discrepancies on this document to the Architect. This document shall be read in conjunction with associated models, specifications and related consultant's documents.

