

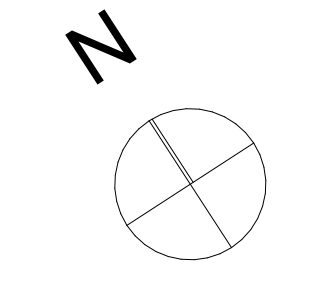
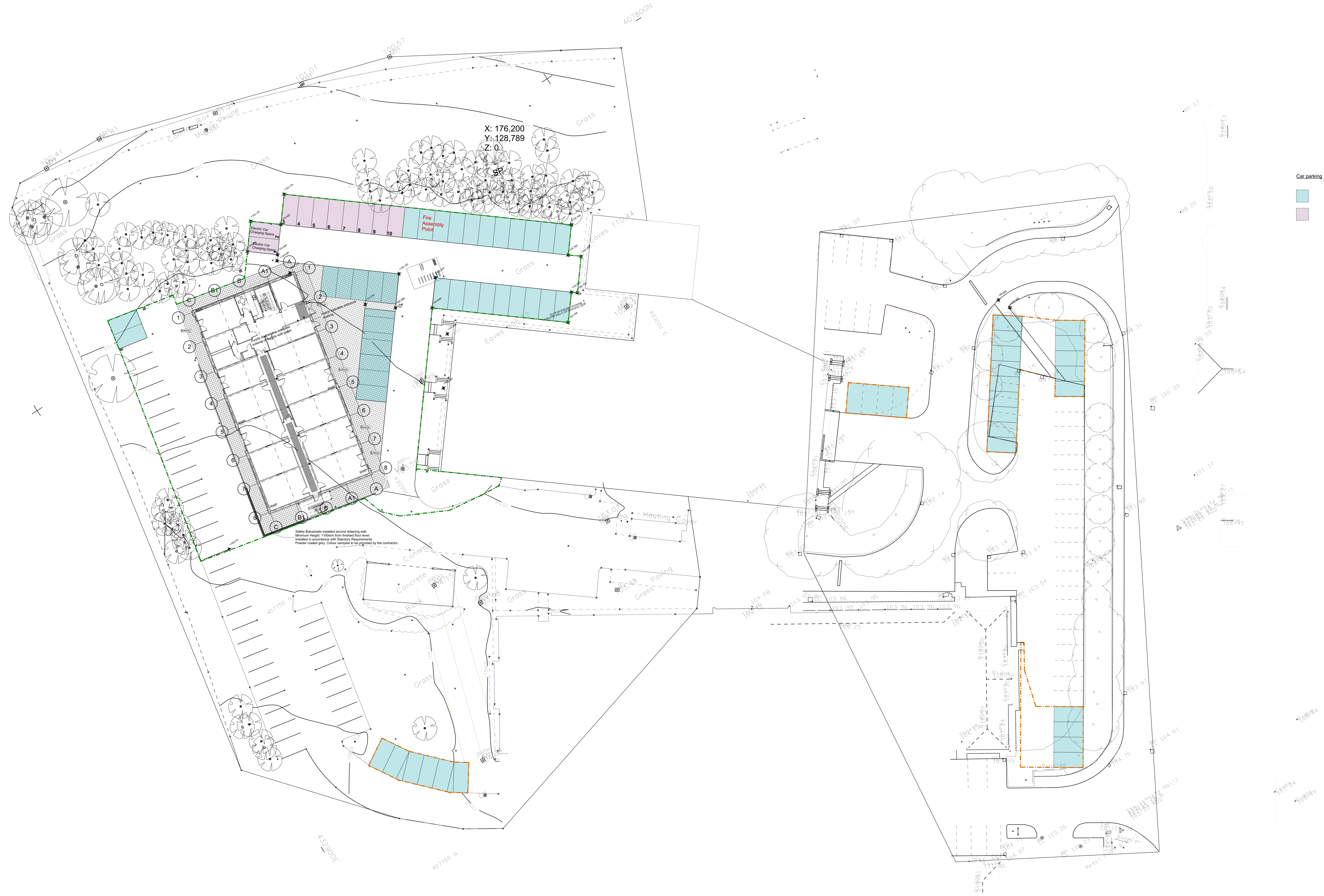
Rev	Date	Description
1	20/07/2020	Issue for Planning



Notes:
 - All work to be undertaken in accordance with the planning approved drawings.
 - All drawings to be read in conjunction with the Structural Engineer's information.
 - All drawings to be read in conjunction with the Mechanical and Electrical Engineer's drawings.
 - CDM 2015 applies.
 - See Landscape Architect's drawings for landscaping details.
 - All work to be undertaken in accordance with the relevant Approved Documents.

Car parking

- Replacement Car Parking Spaces.
- New Car Parking Spaces.



aad architects
 1112 South Street
 Park Hill
 Sheffield
 S2 3PH
 T: +44 (0)114 275 9896
 E: home@aadarchitects.co.uk

Client Details
 Barnsley Business Innovation Centre
 Client Company
 BBIC Innovation Way, Barnsley,
 S70 1JL

New Phase 5 Building

Car Parking Allocation

Area	Count
Replacement Car Parking Spaces	1200
New Car Parking Spaces	100
Total	1300

Document Number: 019-034
 019-034-AAD-ZZ-00-DR-A-0103-P09

This document and its design content is copyright ©. It shall be read in conjunction with all other associated design information including drawings, specifications, schedules and other associated documents. Do not issue from documents. All dimensions to be checked on site. Check details against drawings. Check on drawings for any amendments to the original. If a detail is not shown on the drawing the user should refer to the notes. All work to be undertaken in accordance with the relevant Approved Documents.