

DRAWING SIGN OFF		Description:
Name / Title	Signature	Date

Notes

General:

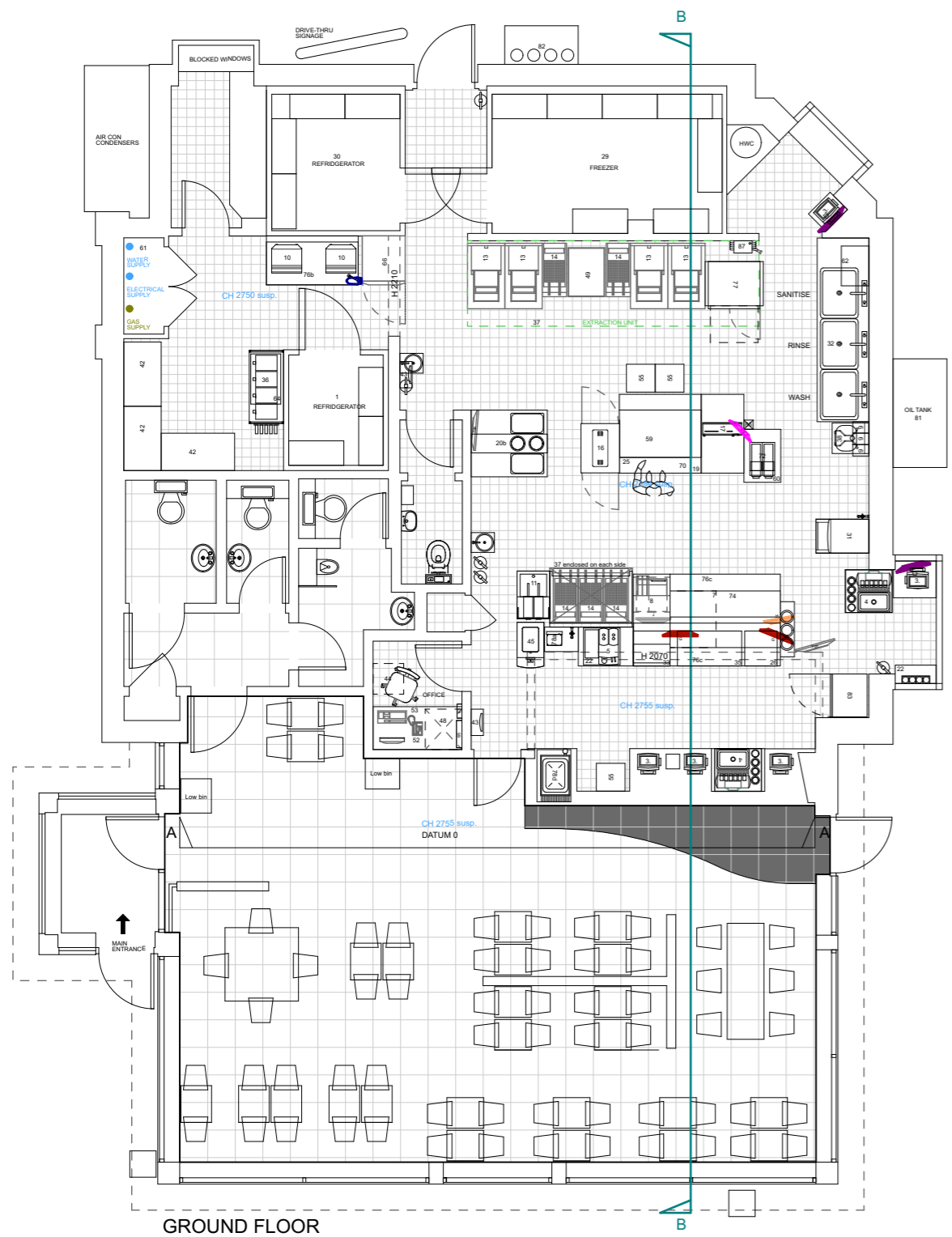
- *All works must be carried out in accordance with the current Building Regulations, relevant codes of practice, local bylaws and landlord requirements.
- *The scope of work is to be in line with the latest KFC "Image Enhancement"/ "Refresh" checklist.
- *The shop-fitter is responsible for ensuring level surfaces ready for laying new floor finishes where necessary.
- *All materials must have agreement certificate and/or a British standards kitemark.
- *All internal finishes to have class 1 surface spread of flame. Finishes to ceiling void to be class 0.
- *Surface spread of ceiling tiles to be class 0 as defined in BS.476 part 7 1971 & 1987.
- *All workmanship to be in accordance with BS.8000.

Scope of works:

Please refer to IE Scope of works issued on 23/05/2016.

ALL DIMENSIONS TO BE CHECKED ON SITE.
DO NOT SCALE FROM THIS DRAWING EXCEPT FOR THE PURPOSES OF LOCAL AUTHORITY PLANNING

EQUIPMENT SCHEDULE	
1.	VEG CHILLER.
2.	KREAM BALL MACHINE.
3.	TILL.
3a.	SELF SERVICE KIOSK.
3b.	HANDHELD TERMINAL.
4.	POST MIX 6 HEAD DISPENSE.
4a.	POST MIX 8 HEAD DISPENSE.
5.	COFFEE MACHINE.
5a.	COFFEE MACHINE SLIMLINE.
6.	HCSB.
6a.	HCSB BASE.
7.	BUN CHUTE.
7a.	2 TIER TRANSFER BIN.
7b.	3 TIER TRANSFER BIN.
7c.	BUCKET CHUTE.
8.	CHIP DUMP / PASS THRU.
9.	DIVERSEY UNIT.
10.	MICROWAVE.
10a.	MICROWAVE TABLE.
11.	CHIP FREEZER.
11a.	LARGE CHIP FREEZER.
12.	4 HEAD HENNY PENNY.
12a.	6 HEAD COLLECTOMATIC.
13.	8 HEAD HENNY PENNY.
14.	14' FRYER (EVOLUTION ELITE).
14a.	14' DOUBLE FRYER (EVOLUTION ELITE).
14b.	14' TRIPLE FRYER (EVOLUTION ELITE).
14c.	14' FRYER (PITCO).
14d.	14' DOUBLE FRYER (PITCO).
14e.	14' DOUBLE FRYER (PITCO).
14f.	18' FRYER.
15.	COUNTER.
16.	HCO90.
16a.	HCO90 - FLAPS IN PLACE OF DOOR.
17.	BUN FOASTER.
18.	WHB.
19.	BURGER STATION.
20.	SINGLE BREADING TABLE.
20a.	LINEAR DOUBLE BREADING TABLE.
20b.	BACK TO BACK DOUBLE BREADING TABLE.
20c.	SLIMLINE BREADING TABLE.
20d.	NEXT GEN BREADING TABLE.
21.	UPRIGHT FREEZER.
22.	S/S TABLING/BENCH.
22a.	MOBILE CHICKEN PACKING TABLE.
23.	HCO95.
24.	HOW3.
24a.	HOW3 BASE.
25.	LABEL PRINTER.
26.	HOT DRAWERS.
27.	HEADSET BASE LOCATION.
28.	BOTTLE STORAGE.
29.	FREEZER ROOM.
30.	COLD ROOM.
31.	ICE MACHINE.
32.	3 BOWL SINK - 2550x750.
32a.	SINGLE BOWL SINK.
32b.	3 BOWL SINK - 1650x950.
33.	S/S SHELVING.
34.	CHEMICAL CUPBOARD.
35.	COLD DRAWERS.
36.	POST MIX SYRUPS.
37.	EXTRACT HOODS.
38.	MOP SINK.
39.	ELECTRIC SWITCHGEAR.
40.	BAIN MARIE.
41.	UPRIGHT FRIDGE.
42.	STORAGE SHELVING.
43.	INSECT KILLER.
44.	WALL MOUNTED PATCH CABINET.
44a.	FLOOR STANDING PATCH CABINET.
45.	ICE CREAM MACHINE.
46.	FRIDGE UNIT UNDER.
47.	SAFE.
48.	LANDING TABLE.
49.	2 DRAWER FILING CABINET.
50.	MOBILE BUN DEFOST UNIT.
51.	PHONE.
52.	WORKTOP ON CHROME LEGS.
53.	WALL MOUNTED VIDEO CUPBOARD.
54.	KITCHEN BIN.
55.	FIRE ALARM INDICATOR PANEL.
56.	DISHWASHER.
57.	S/S WALL.
58.	DUKE HSHU HOT HOLD TO B.S. - 3x2 HIGH.
59a.	DUKE HSHU HOT HOLD TO HCW - 2x2 HIGH.
60.	STAR GRILL.
61.	WATER MAIN.
62.	WATER CYLINDER / BOILER LOCATION.
63.	INTRUDER ALARM PANEL.
64.	BRITVIC DRINKS COOLER.
65.	KEY BOX.
66.	THAW CABINET.
67.	MOP STORAGE.
68.	MUSIC PLAYER.
69.	
70.	COLD FOOD TABLE.
71.	TWISTER DRAWER.
72.	STAR GRILL TABLE.
73.	
74.	HOW3.
75.	GOODS HOIST.
76.	FREESTANDING COLD DRAWER 1100x700mm.
76a.	HCSB COLD DRAWER 1100x700mm.
77.	RATIONALE OVEN.
78a.	RAZZLE MACHINE.
78b.	PUMP AND TOPPING MACHINE.
78c.	
78d.	TABLE TOP CARPIAGANI.
78e.	BLENDERS & TOPPINGS TABLE.
79a.	FOOD QUALITY MANAGEMENT PANEL.
79b.	FOOD QUALITY MANAGEMENT MONITOR.
80.	POSITION OF 2nd HOT WATER SUPPLY.
81.	OIL MANAGEMENT SYSTEM TANK.
82.	CO2 STORAGE.
83.	PEPSI FRIDGE.
84.	INTERNAL GREASE TRAP.
84a.	COMBINED GREASE TRAP MOP SINK.
85.	BRUSH RACK.
86.	ELECTRICAL SERVICE COLUMN.
87.	PDMO HOSE.
88.	BIFFA BIN.
89.	LEARNING ZONE.
90.	FUSION TIMER.
91.	AMBIENT DISPLAY.
92.	PTUG.
93.	PTUG FILTER.
94.	PACKAGING TOWER.
95.	DUAL SOFT SCOOP DISPENSER.
96.	MANITOWOC ES2 OVEN.



Existing FOH plan
1:100

rev	date	description

architecture design limited
registered in England and Wales, No.08419252
The Joiners Shop, +44 (0)1634 816132
The Historic Dockyard www.adesignlimited.co.uk
Chatham twitter.com/adesignlimited
Kent, ME4 4TZ facebook.com/adesignlimited



IMAGE ENHANCEMENT

store address
Peel Str Barnsley KFC

1 Peel Street,
Barnsley S70 2QX

drawing title
Existing floor plans

drawn by	checked	date
EG	MP	18/01/2018
store no.	scale	
	1:50 @A1/1:100@A3	

drawing no.	revision
2016/A003	3
Architect drawing no.	revision