

The general contractor is responsible for the verification of all dimensions on site and the architect is to be informed of any discrepancy.

The status of information contained in a computer copy of this drawing shall be limited to that conveyed by the paper copy.

- Revisions:
- A. 01.08.08 C.ODDY  
GA plan amended and furniture altered to suit.
  - B. 25.09.08 C.ODDY  
GA plan amended and furniture altered to suit.
  - C. 07.10.08 C.ODDY  
Canopy amended.



Entrance Elevation  
Simple Pitched Roof Option



Rear Elevation



Side Elevation



Entrance Elevation  
Gable to Street Option

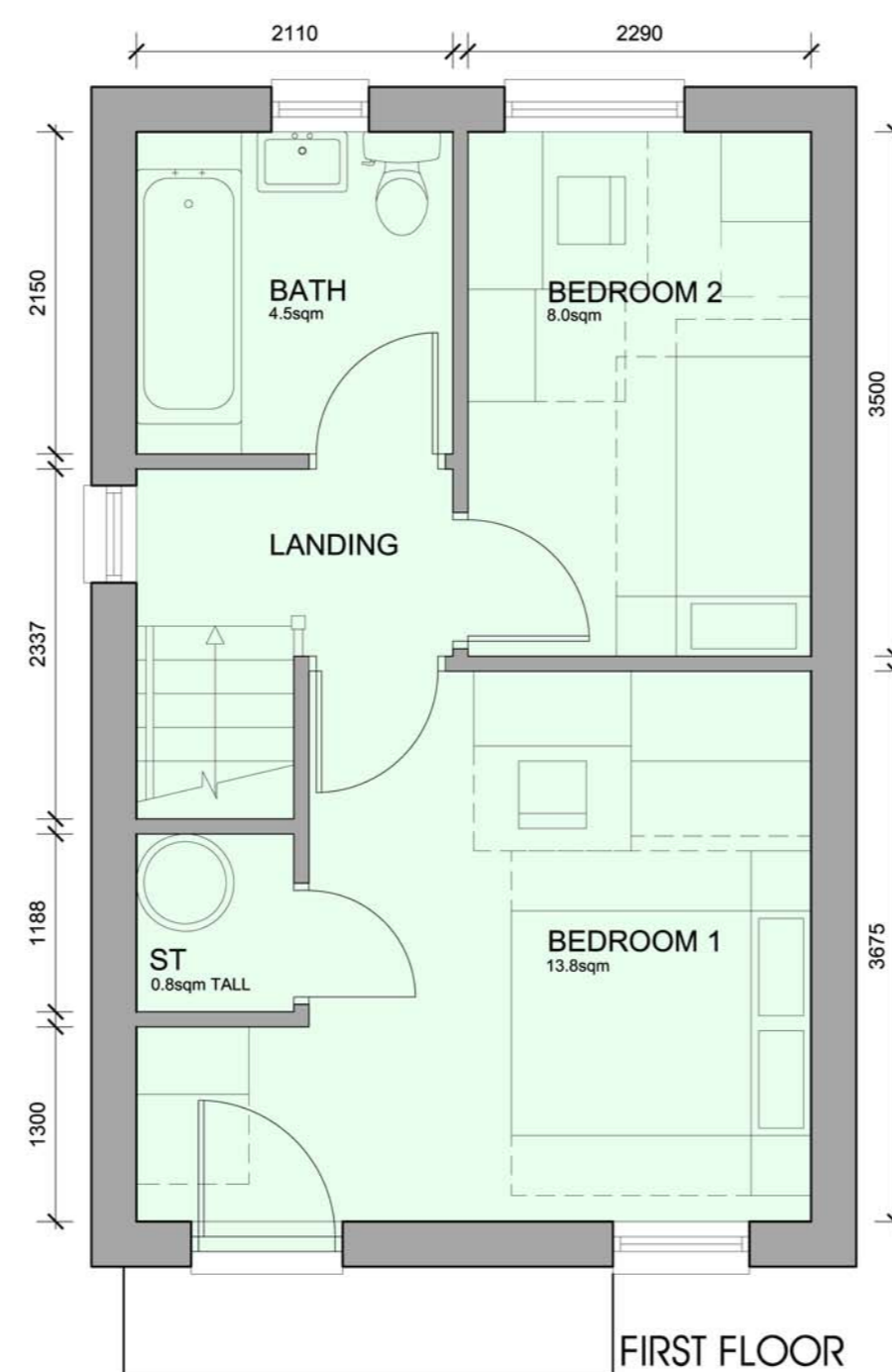
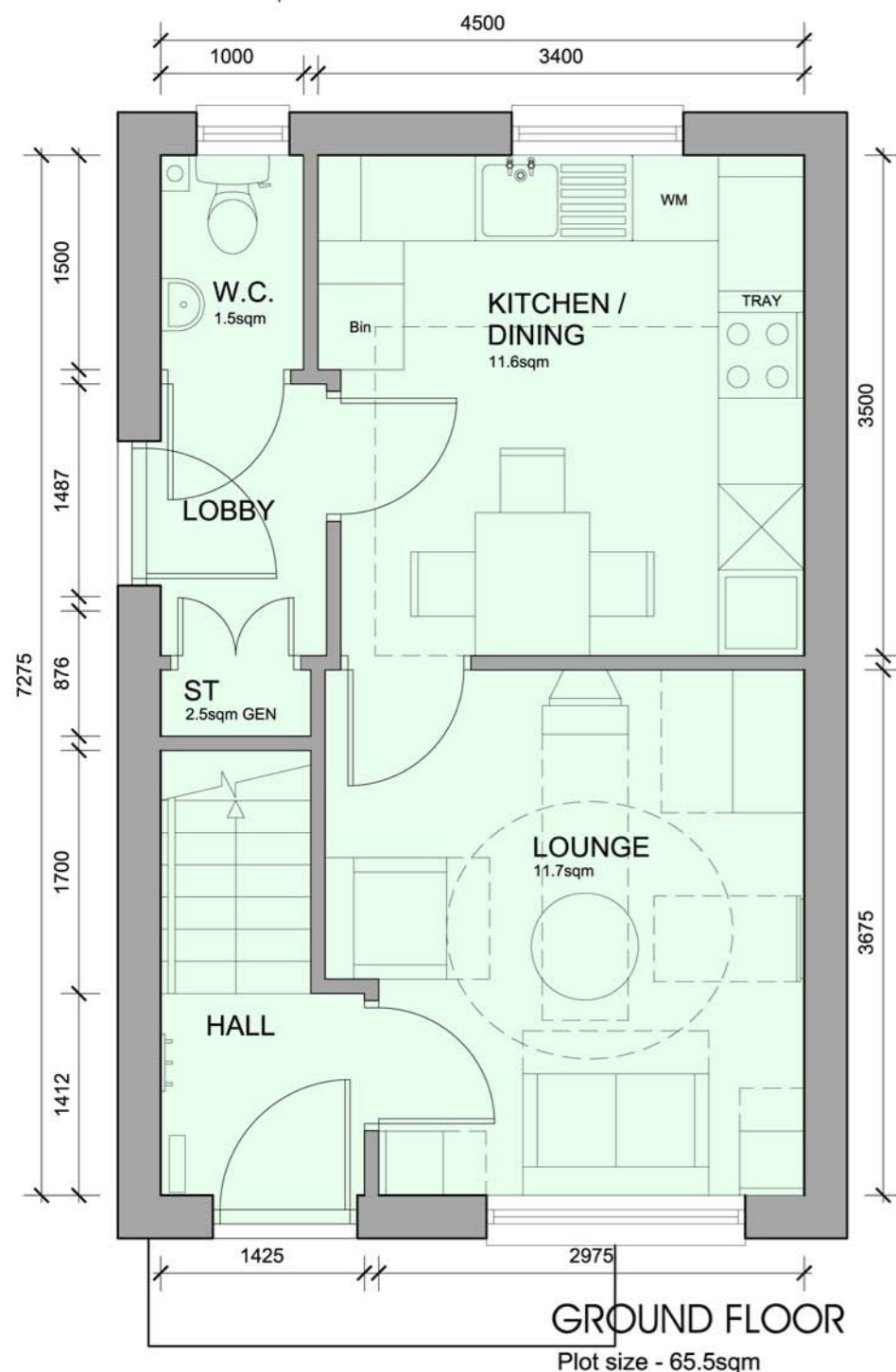


Rear Elevation



Side Elevation

- 1. FL Quality facing brickwork
- 2. Through coloured render system (ie. Sto / Weber or similar approved)
- 3. 25mm x 125mm horizontal timber PMV boarding on vertical fanalized softwood battens. Timber to be heat treated European Redwood, from certified managed sustainable forests (ie. Finnforest Thermowood or similar approved)
- 4. Stained timber framed double glazed windows
- 5. Interlocking concrete tiled roof
- 6. Soldier course detail
- 7. Projecting entrance canopy with pressed metal colourcoated edge detail
- 8. Parapet wall with pressed metal capping flashed over from roof.
- 9. galvanized steel balustrade
- 10. colourcoated pressed metal panel



Scale: 1:100 / 1:50 @ a2  
 Date: July 2008  
 Drawn: RJJ  
 Dwg No: 2121-015-122C

2b3p - 2 Storey  
 New Lodge Crescent, Barnsley  
 Yorkshire Housing

