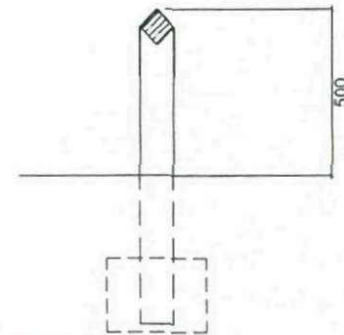
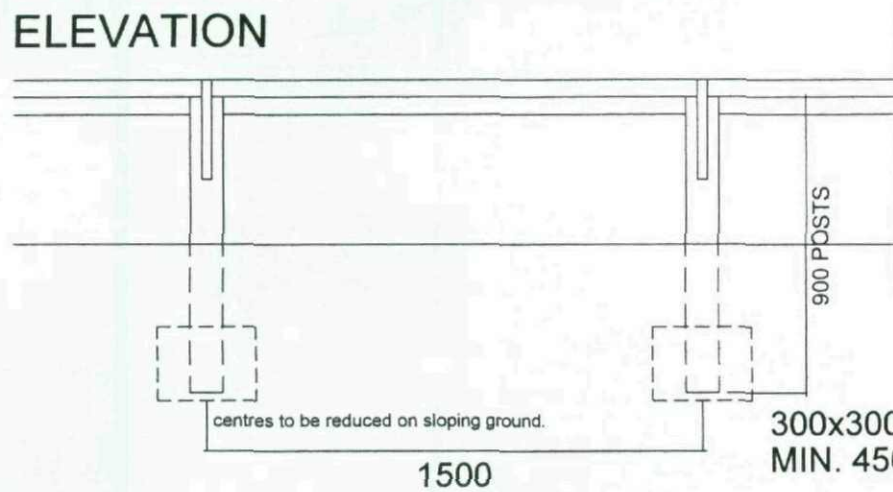


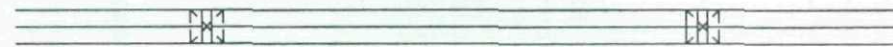
ELEVATION

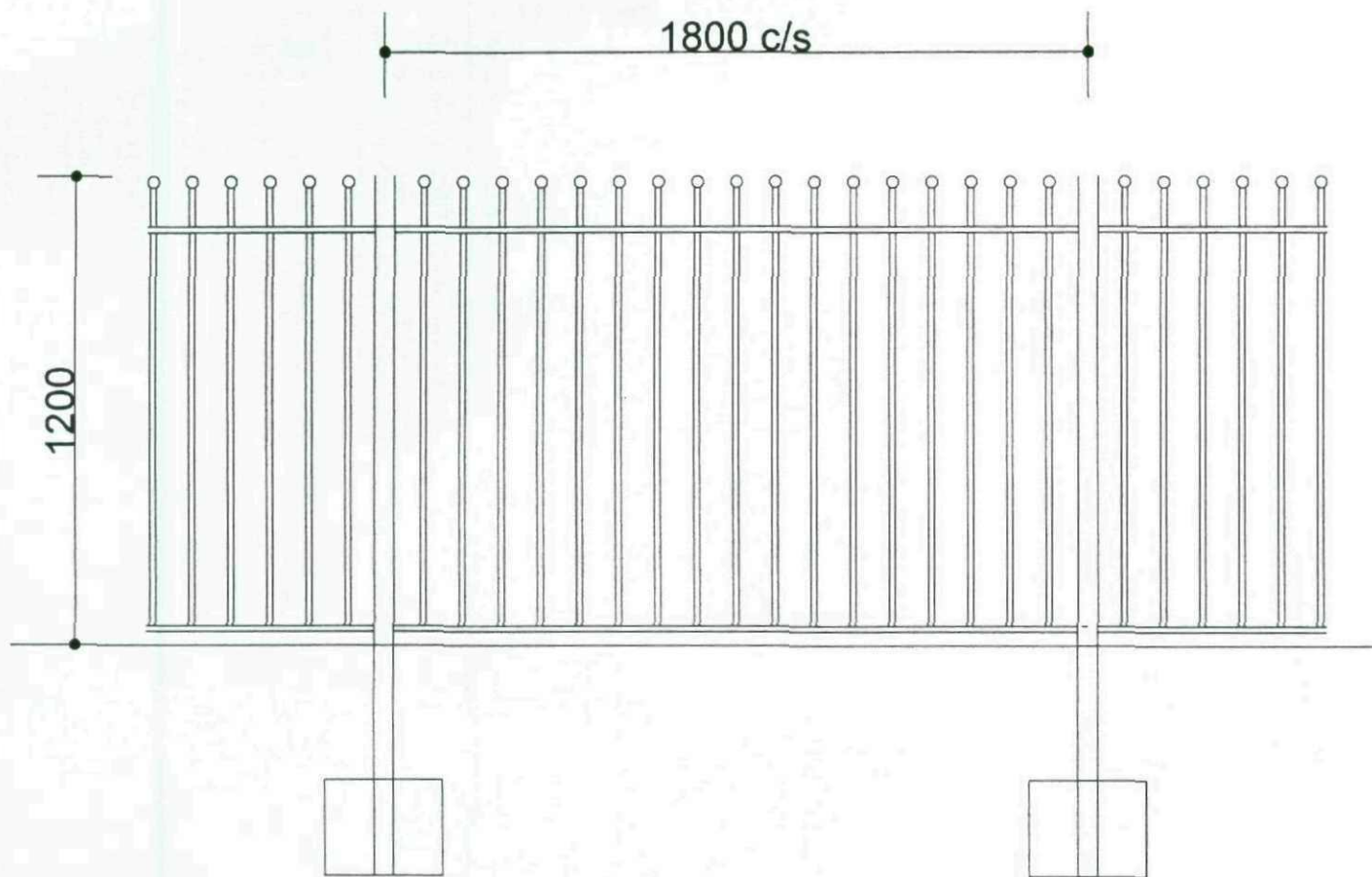


SECTION

FENCE SPECIFICATION:
100x100 POSTS 900 LONG.
75x75 RAIL 3000 LONG.
30x2.5 GALVANISED MS
STRAPS 500 LONG

PLAN

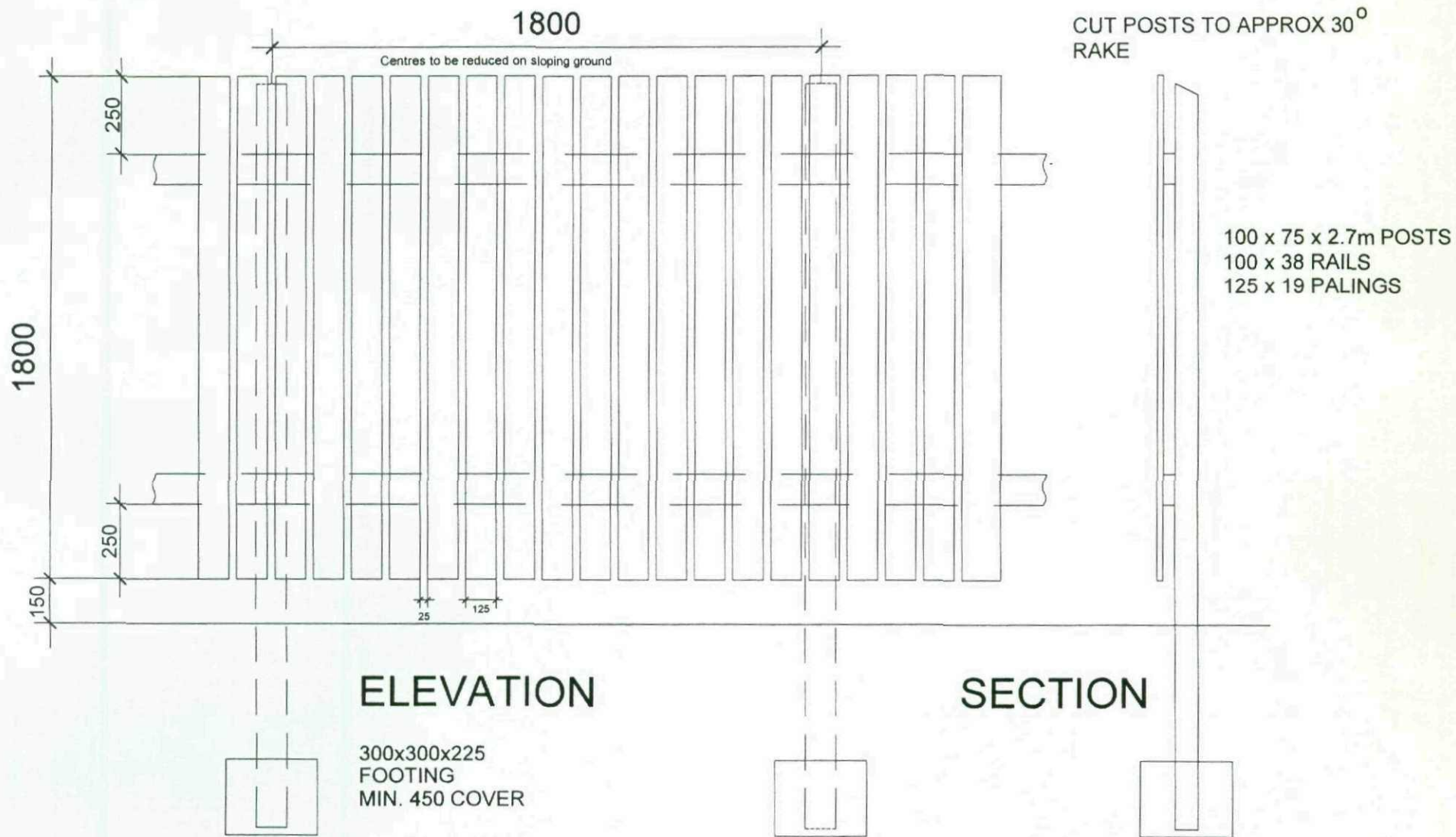




1200 mm high ball topped
steel railings hot dipped
galvanised and decorated.

1.2m High Feature Railings (2008) - Not to Scale Dwg. No. 1.2fr





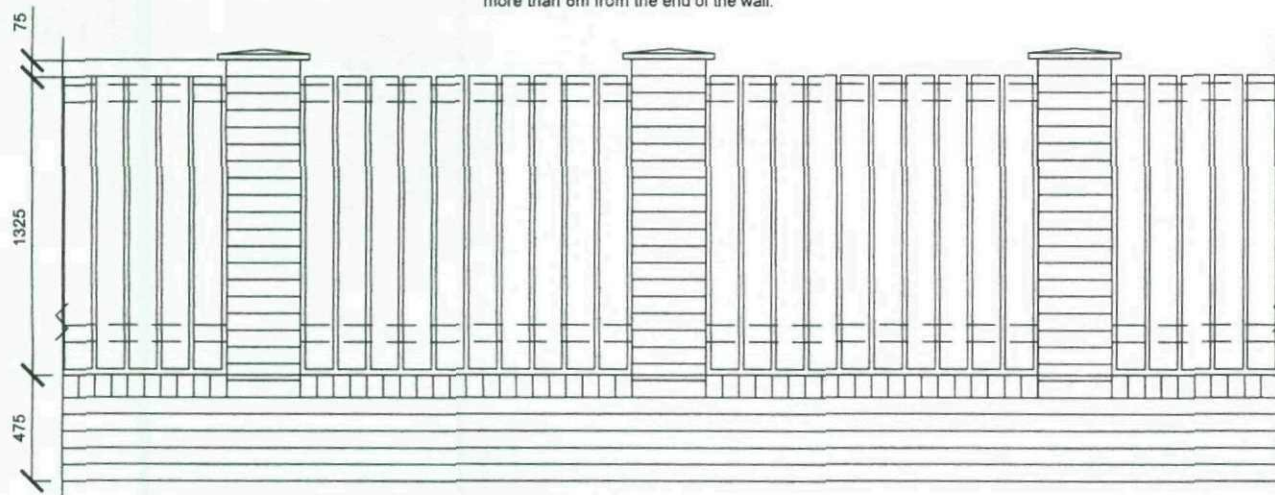
1.8m High Screen Fence (2008) - Not to Scale Dwg. No. 1.8sf



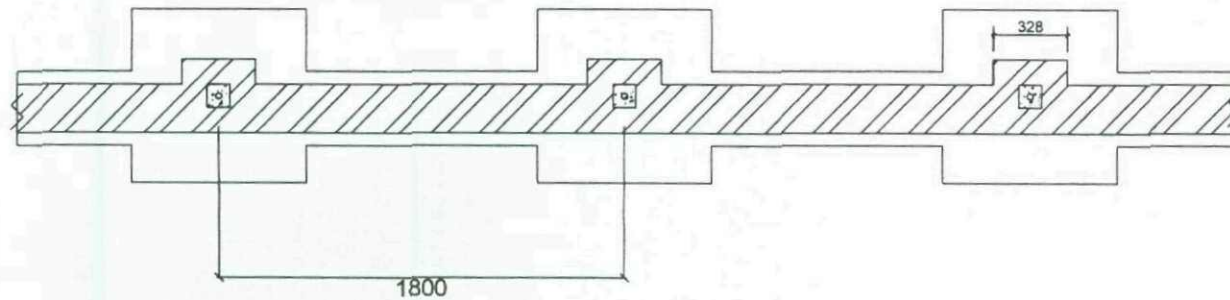
Slip ties and movement joints to be used on every third panel at abutment with pier to allow for differential movement. Top slip tie to be positioned directly below header course and two remaining ties to be spaced equally from top tie to ground.

For clay brick a 16mm movement joint is required with first movement joint being no more than 6m from the end of the wall.

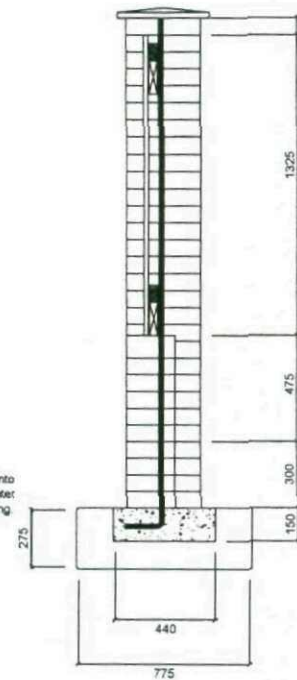
ELEVATION



PLAN



Steel reinforcing bar to be set into foundations and run up the center of the pier to underside of coping.



SECTION

Precast concrete coping

38x75mm Timber rails fastened to 38x38x150 mm Timber blocks plugged & screw fixed to pier
125x19mm vertical boards

All timber to be pre treated to give service life of min 15 years.

Brick-on-edge

First 2 brick courses to be frost resistant with normal soluble salt characteristics manufactured in accordance with BS 3921 (Hanson bricks with FL ratings are acceptable)

Concrete strip foundation

