

SHRUB MIX A								
AREA		39 m²						
Species	Height (cm)	Root	Size/Age	Habit	Breaks	Plants per msq.	Planting Area %	Total No.
Berberis x ottawensis 'Superba'	60-80	C	3L	B	3	3	15	18
Choisya ternata 'Aztec Pearl'	40-60	C	3L	Bu	7	3	25	29
Cornus alba 'Ivory Halo'	60-80	C	3L	B	5	3	15	18
Cotoneaster conspicuus 'Decorus'	40-60	C	3L	B	6	3	15	18
Viburnum x burkwoodii	60-80	C	3L	Bu	5	3	30	35

SHRUB MIX B								
AREA		38 m²						
Species	Height (cm)	Root	Size/Age	Habit	Breaks	Plants per msq.	Planting Area %	Total No.
Hebe pinguifolia 'Sutherlandii'	40-60	C	3L	Bu	4	3	15	17
Vinca minor 'Gertrude Jekyll'	15-20	C	3L	SSh	-	5	15	29
Euonymus fortunei 'Emerald Gaiety'	30-40D	C	3L	Bu	5	3	15	17
Prunus laurocerasus 'Otto Luyken'	30-40	C	3L	Bu	5	3	15	17
Geranium sanguineum 'Album'	-	C	3L	FP	-	4	15	23
Cotoneaster 'Coral Beauty'	60-80	C	3L	Bu	5	3	25	29

TREE PLANTING						
Ref	Species	Form	Girth	Height	Root	Breaks Tot. No.
Cb	Carpinus betulus 'Frans Fontaine'	EHS	14-16	425-500	BR/RB	- 7
Bu	Betula utilis jacquemontii	EHS	14-16	425-500	BR/RB	- 6
Py	Pyrus calleryana 'Chanticleer'	SSE	10-12	300-350	BR	- 3
Pa	Prunus avium 'Plena'	SSE	10-12	300-350	BR	- 5

IMPLEMENTATION PROGRAMME:

First planting season following construction

LANDSCAPE MANAGEMENT:

Site Owner to implement 5-year management plan to cover the following regular, seasonal and annual maintenance operations:

Trees:
Water monthly April to September in periods of drought
Inspect trees annually in winter
Check tree ties on new tree planting and replace/loosen/remove as necessary
Carry out minor tree surgery as necessary to promote healthy growth
Slow release feed once a year

Shrubs:
Remove litter
Water monthly April to September in periods of drought
Maintain plant beds weed free
Remove dead plants
Trim planting to prevent encroachment onto paths
Prune planting clear of all signage and sightlines
Firm up rocked plants
Eradicate any occurrence of invasive species

Plant failures
Replace any dead plants in following planting season (Nov - Mar).

OUTLINE SPECIFICATION:

GENERAL

All works to be in accordance all relevant British Standards and the Landscape Consultant's planting plans and specification (to be issued) and in compliance with the National Landscape Specification (NBS) 1998, latest revision.

SETTING OUT

All dimensions and levels should be checked and adjusted on site. Contractor responsible for care around all services. Do not scale from this drawing.

SITE PREPARATION

Building rubble in excess of 50mm dimension to be removed, compaction ripped 150mm deep or broken out by JCB back-actor leaving surface rough. Ensure free drainage.

TOPSOIL

Multipurpose topsoil BS:3882 medium loam, not more than slightly stoney, pH 5.7-7.5.
Depth 450mm all planting areas. 150mm to all other areas.
Provide Declaration of Analysis of topsoil to Employer's Agent.

TREE PIT

Select Standard 1200mmØ x 750mm depth
Extra Heavy Standard 1200mmØ x 750mm depth

PREPARATORY HERBICIDE

Weed allowed to grow and treated with up to three applications glyphosate prior to cultivation or planting during the fallow period.

GRASSING

Grassing between April-October.
Cultivate to prepare seed bed. Finished seed bed levels 25mm above pavings and kerb edges. Stones pick to 25mm.
Pre-seeding fertiliser 50g/m². Grass mix chosen for low maintenance requirements:-
GRASS SEED MIX from DLF Trifolium Tel: 01386 791102: LAWN 'Pro 50 Quality lawn (with Ryegrass)'

PLANTS

General

Plant material in accordance with the HTA's National Plant Specification 1997. All plants container grown, well formed and free from disease. Plant handling to CPSE Plant Handling Code.

Quality as supplied by:
Johnsons of Whitley Ltd, York YO26 8AQ. Tel: 01423 330234.
Or other nursery listed in the Horticultural Trades Association Nursery Certification Scheme.

Planting

Plant November to March.
Planting areas cultivated 150 mm deep and stone picked of material greater than 50mm. Plant material pit planted 300 x 300 x 200 minimum. Approved planting compost incorporated into the soil during planting.

Backfill mix	Enmag	P4	Compost
Shrubs	35g	5g	10 litres
Select Standard	75g	50g	75 litres
Extra Heavy Standard	75g	50g	75 litres

Backfill mix (30%) incorporated into topsoil (70%) during planting.

TREE STAKING

Select Standard/ Extra Heavy Standard - Short Double Staking
Preserved softwood 100mm min diameter. Driven vertically 450mm into base of pit on either side. Cross bar - timber, as stake. Secured with rubber J Tom's 37.5mm wide standard nylon reinforced rubberbelt ref L2 ties including rubber spacer pads ref L1.

MULCH

Total cover coarse bark mulch to shrub areas, Melcourt Bark Nuggets 75mm deep.

AFTERCARE

24 months aftercare by planting contractor. Including grass cutting, weed, pest and disease control, pruning and watering.

Weed control by residual herbicide to a weed free condition around plants. Spot treat with glyphosate and hand weed as necessary.

Watering in periods of drought to ensure establishment and continued thriving of planting.

DEFECTS LIABILITY

Twenty-four months on plant material and grass. Replacements in November in year of loss.

ONGOING MAINTENANCE

Continue to maintain for five years from completion of planting by hand weeding and spot treatment of glyphosate herbicide to any weed in planted areas until plants close canopies. Replace failures for 5 years.

Revisions:

A - Key updated

Based on Proposed Site Plan drawing no. 2256_104 recieved 03/04/19 from Charles Dunn - CODA Planning

Weddle Landscape Design
LANDSCAPE ARCHITECTURE
ENVIRONMENTAL PLANNING
Mews Studio, Charnwood House, Tel (0114) 250 1181
8 Kenwood Bank, Sheffield S7 1NU Fax (0114) 250 1188
www.weddles.co.uk mail@weddles.co.uk

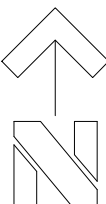
Job GROVE STREET, BARNSELY

Title
LANDSCAPE MASTERPLAN

scale@A3	drawn	date	job number	number	revision
1:500	PM	APR 19	937	GSB 01	A

KEY

- Site Boundary
- Select Standard Tree
- Extra Heavy Standard Tree
- Grass
- Ornamental Shrubs
- Planting mix no.
- Marshalls 400 x 400 x 65 Natural Flag Paving or similar approved
- Marshalls 200 x 100 x 80 Silver Grey Block Paving or similar approved
- Tarmac
- 1.8m Close Boarded Fence
- 800mm Brick Piers & Railings



Scale 1:500

0 5 10 15 20 25 [m]

