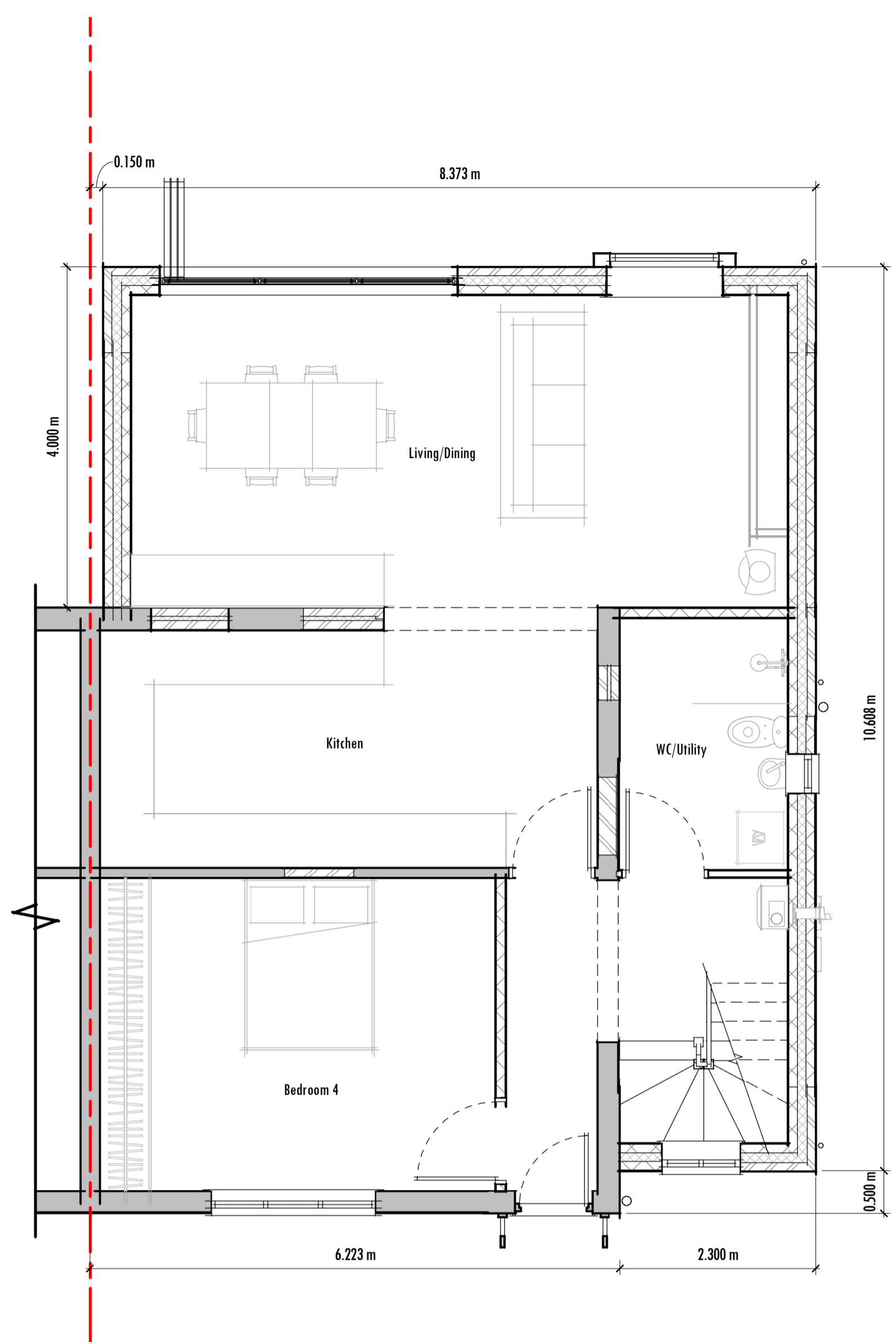
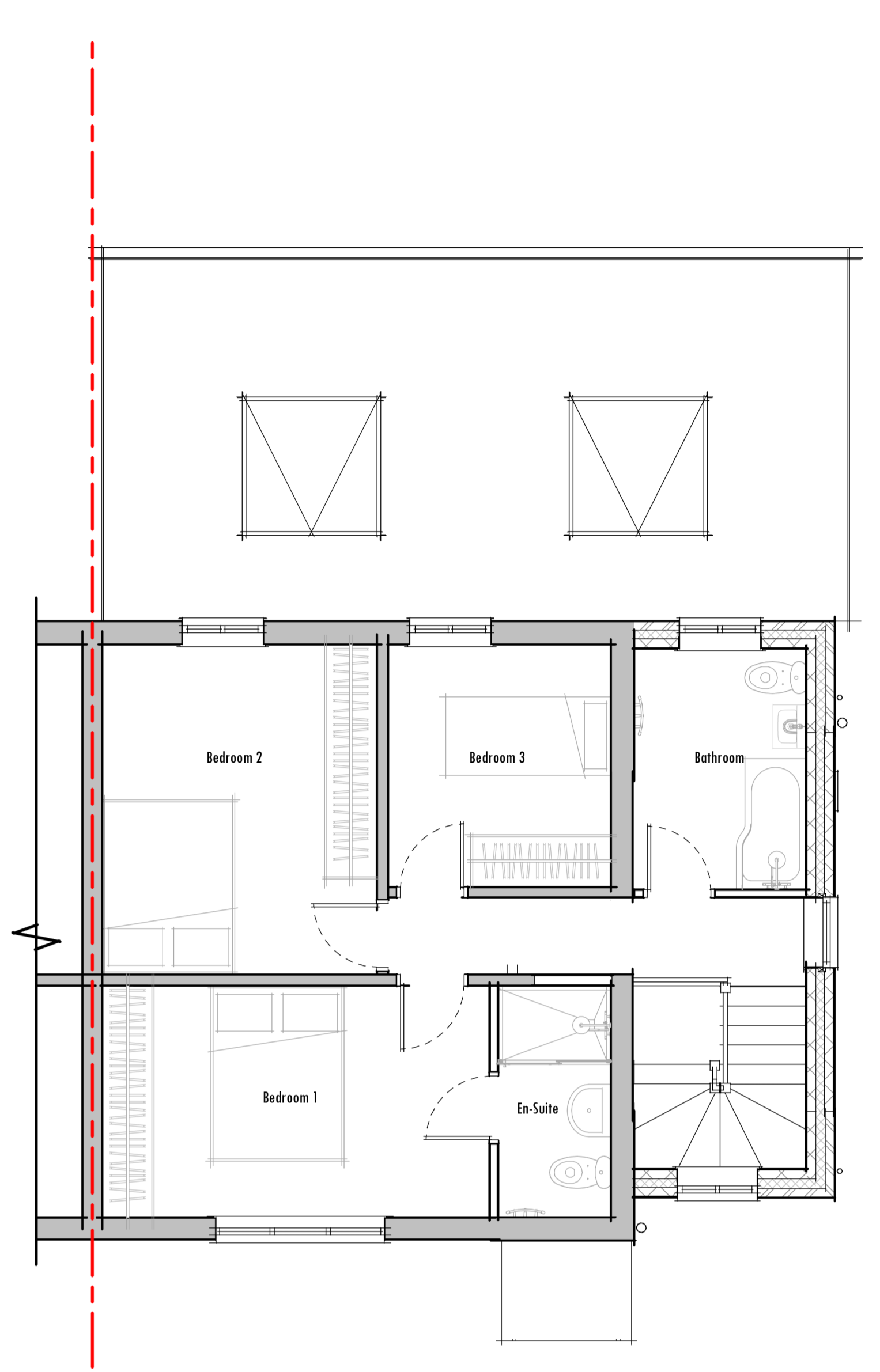


Rev	Description	Date



1 Ground Floor
1:50



2 First Floor
1:50



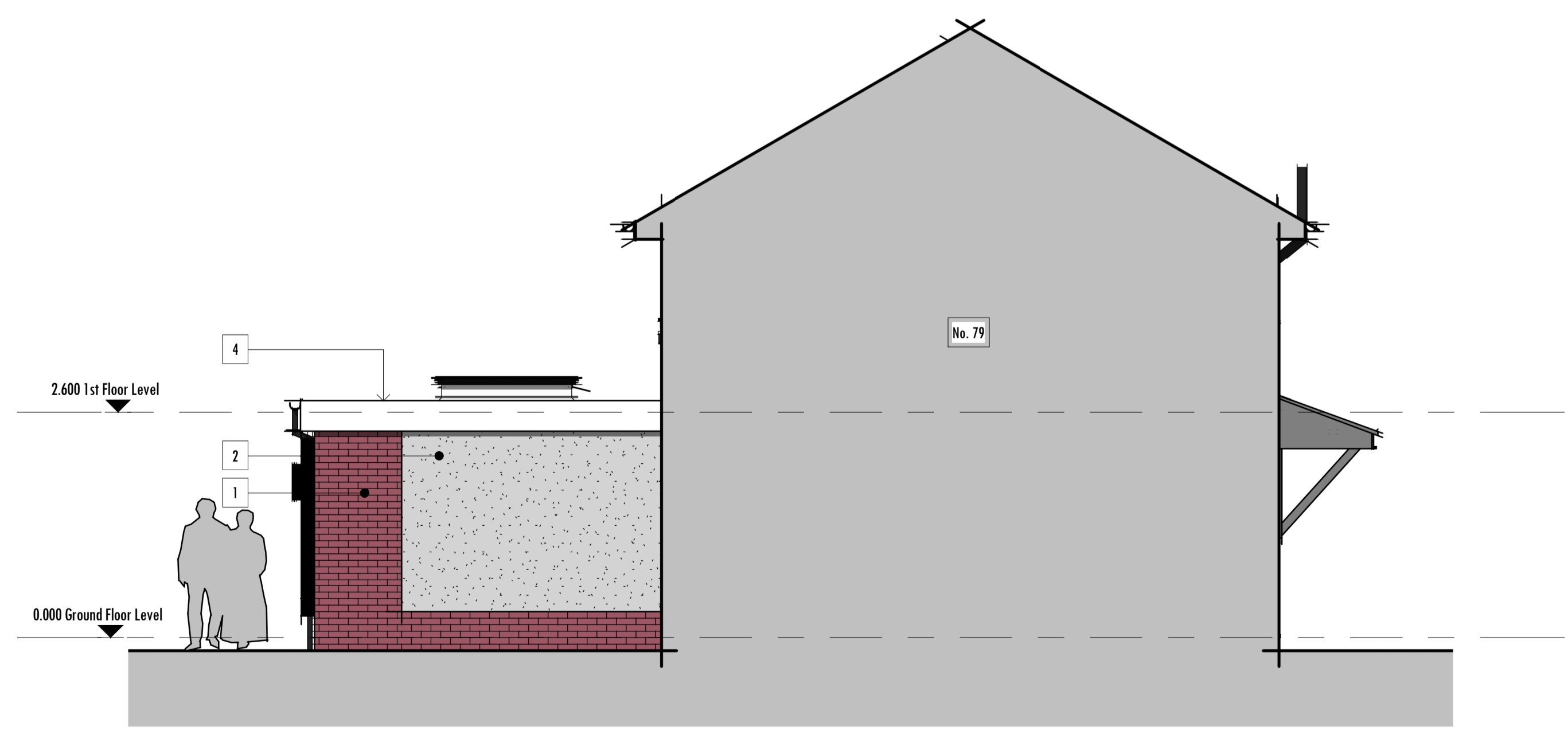
5 Front Elevation
1:50



6 Rear Elevation
1:50



3 Side Elevation
1:50



4 Side Elevation
1:50

Materials Key

Ref	Material
1	Masonry Colour: Red
2	Render Colour: White
3	Double Glazed Doors, Windows Colour: Frames, Black
4	uPVC Fascia, Colour: White uPVC Gutter & Fall Pipes, Colour: Black
5	Concrete Double Roman Tiles Colour: Red
6	Double Glazed, Windows Colour: Frames, Black
7	Double Glazed Aluminium Bi-fold Colour: Frames, Black
8	Double Glazed Aluminium Clad Pop-out Window Colour: Frames, Black

