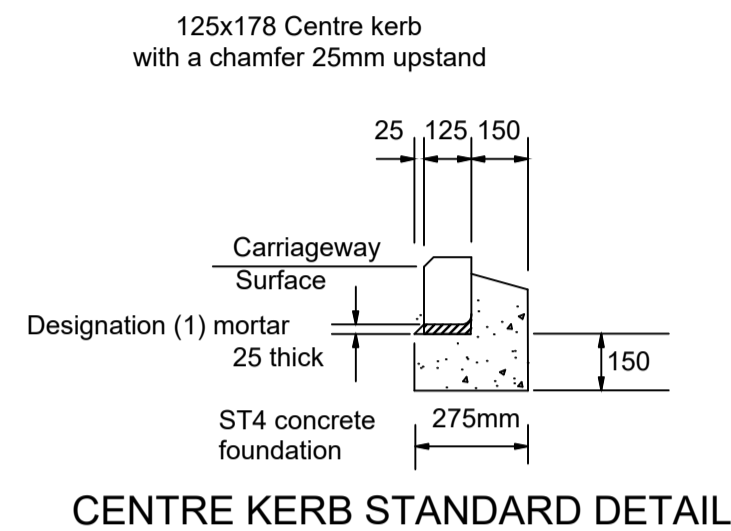
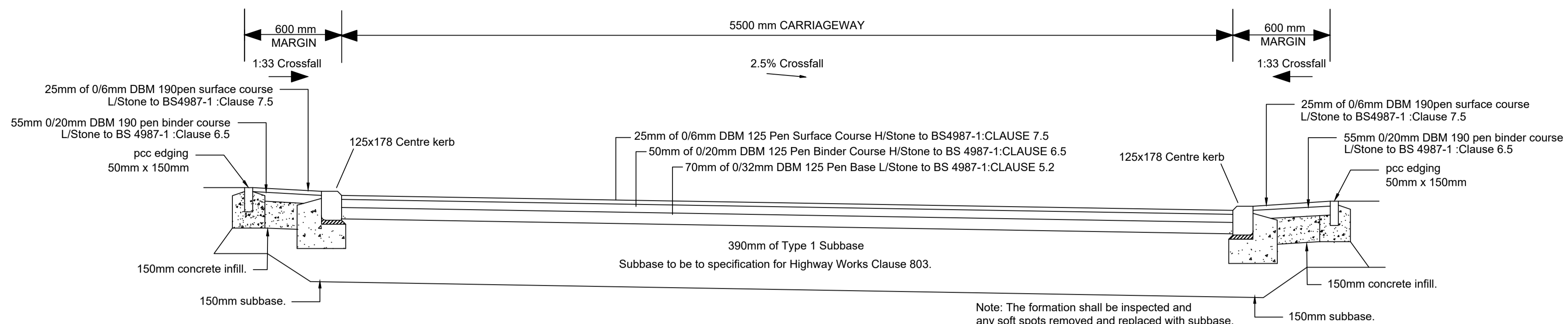


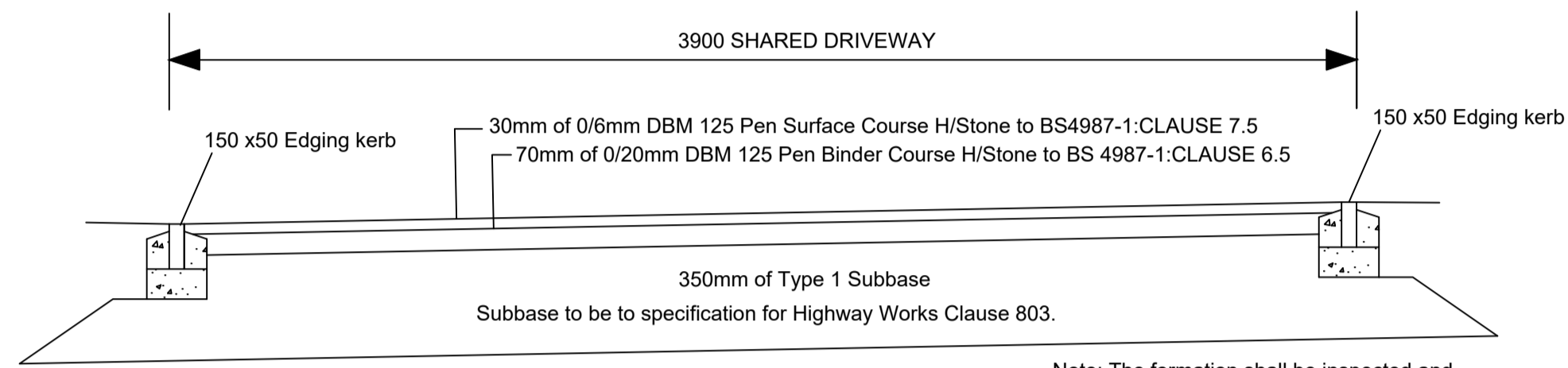
FOOTWAY EDGING DETAIL



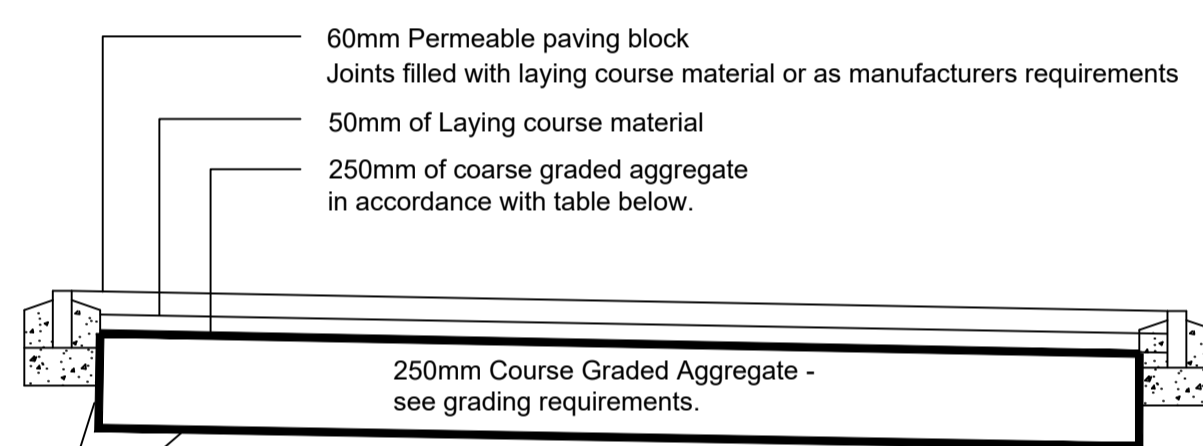
CENTRE KERB STANDARD DETAIL



SHARED DRIVEWAY 1 TYPICAL CROSS SECTION



SHARED DRIVEWAY 2 TYPICAL CROSS SECTION



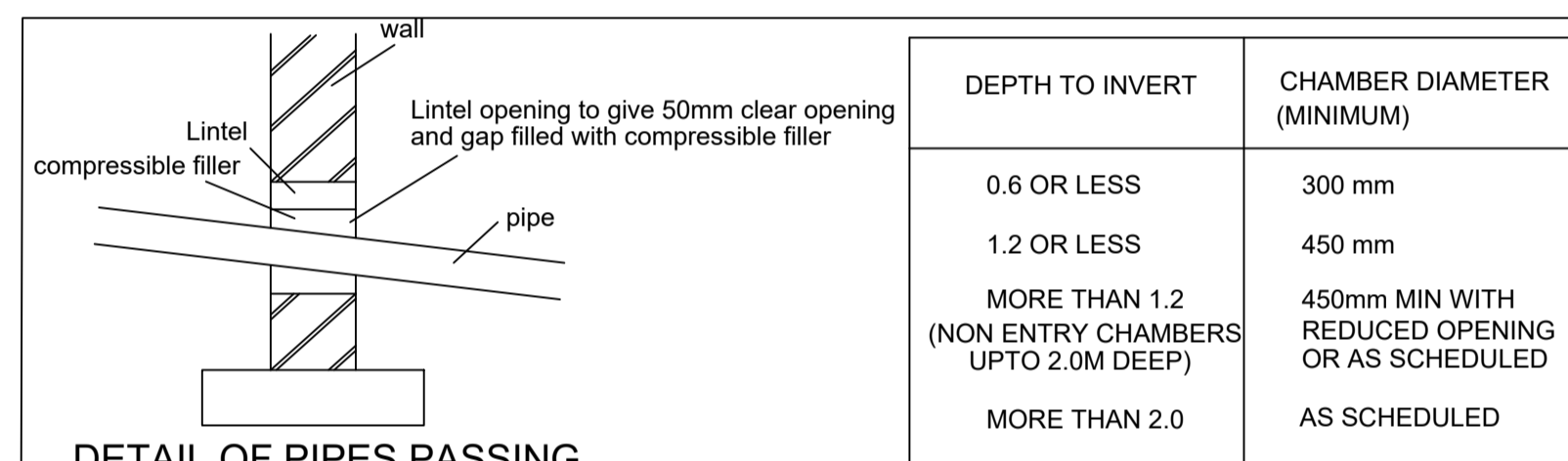
INDIVIDUAL DRIVE / SHARED DRIVE PERMEABLE PAVING TYPICAL CROSS SECTION WITH 250mm/350mm COURSE GRADED AGGREGATE

| BS SEIVE SIZE | PERCENTAGE PASSING |
|---------------|--------------------|
| 14 | 100 |
| 10 | 98 - 100 |
| 6.3 | 80 - 99 |
| 2.0 | 0 - 20 |
| 1.0 | 0 - 5 |

LAYING COURSE MATERIAL TYPE 2/6.3 TO BSEN 13242:2002

| BS SEIVE SIZE | PERCENTAGE PASSING |
|---------------|--------------------|
| 40 | 100 |
| 31.5 | 98 - 100 |
| 20 | 90 - 99 |
| 10 | 25 - 70 |
| 4 | 0 - 15 |
| 2 | 0 - 5 |

COURSE GRADED AGGREGATE (CGA) TYPE 4/20 TO BSEN 13242:2002



DETAIL OF PIPES PASSING BENEATH WALLS

| DEPTH TO INVERT | CHAMBER DIAMETER (MINIMUM) |
|---|--|
| 0.6 OR LESS | 300 mm |
| 1.2 OR LESS | 450 mm |
| MORE THAN 1.2 (NON ENTRY CHAMBERS UPTO 2.0M DEEP) | 450mm MIN WITH REDUCED OPENING OR AS SCHEDULED |
| MORE THAN 2.0 | AS SCHEDULED |

INSPECTION CHAMBER SIZES

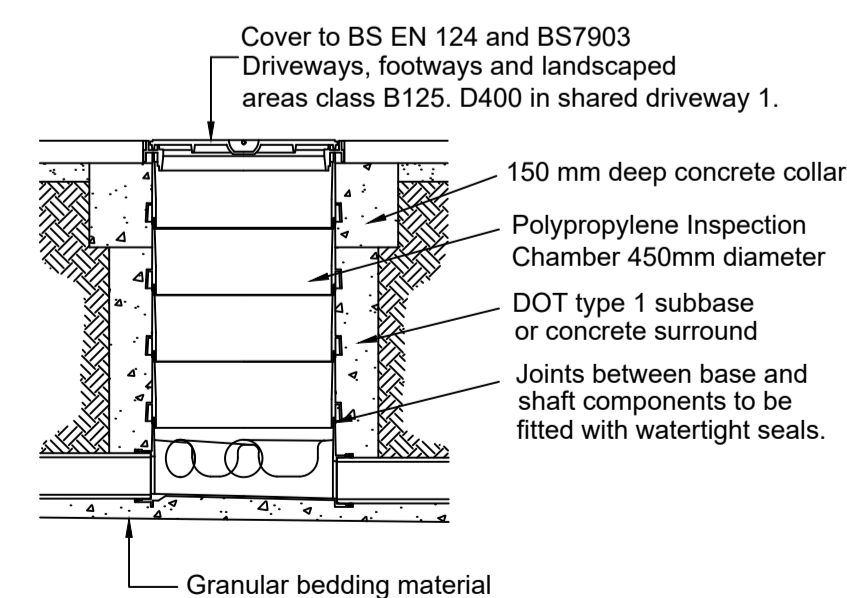
| PRODUCT NAME | DIAMETER (mm) | MANUFACTURER | MATERIAL |
|--------------|----------------|--------------|-----------------|
| SUPERSLEEVE | 100 AND 150 ID | HEPWORTH | VITRIFIED CLAY |
| SUPERSEAL | 100 AND 150 ID | HEPWORTH | VITRIFIED CLAY |
| DENSLEAVE | 100 AND 150 ID | NAYLOR | VITRIFIED CLAY |
| DENSEAL | 100 AND 150 ID | NAYLOR | VITRIFIED CLAY |
| ULTRADRAIN | 110 AND 160 OD | UPONOR | UPVC SOLID WALL |
| PLASTIDRAIN | 100 AND 160 OD | HEPWORTH | UPVC SOLID WALL |

NOTE: ALL PRIVATE DRAINAGE PIPE SIZES 100MM (OR 110MM) UNLESS OTHERWISE SPECIFIED ON THE DRAWINGS ALL PIPES LAID TO MANUFACTURERS INSTRUCTIONS AND LAID ON SPECIFIED BED TYPE. OTHER PIPE AND COMBINATIONS MAY BE SUITABLE CONCETE PROTECTION UNDER ROADS WHERE COVER LESS THAN 1.2M.

ACCEPTABLE PIPE TYPES

| MANUFACTURER | PRODUCT NAME | MATERIAL | MAXIMUM DEPTH | COVER TYPE |
|--------------|------------------------------|------------------|---------------|---------------|
| NAYLOR | PLASTIC INSPECTION CHAMBER | POLYPROPYLENE | 1200MM | CLASS B125 |
| HEPWORTH | PPIC | POLYPROPYLENE | 1200MM | CLASS B125 |
| UPONOR | INSPECTION CHAMBER (450 DIA) | POLYPROPYLENE | 1200MM | CLASS B125 |
| MARSHALLS | INSPECTION CHAMBER | PRECAST CONCRETE | 1200MM | TO BS5911 PT2 |

CHAMBERS TYPICAL PIPE AND CHAMBER TYPES



TYPICAL INSPECTION CHAMBER (PPIC)

(Maximum depth 2m).

ALL CONNECTIONS TO POLYSTORM SYSTEM TO BE BY POLYPIPES SPECIALIST COMPONENTS

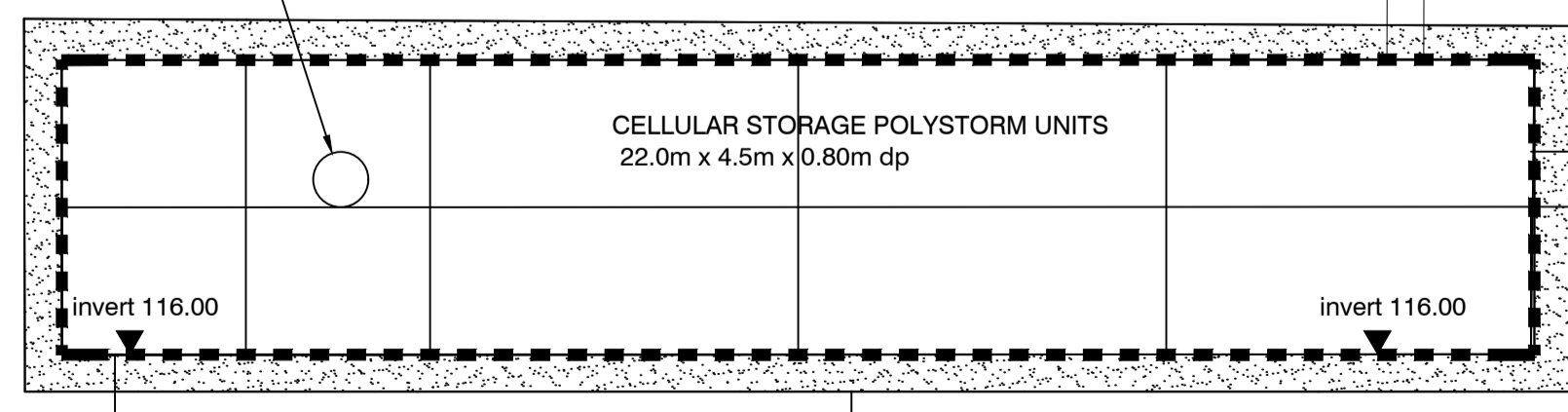
150mm inlet pipe from silt trap chamber.

Backfilling to be with 100mm sharp sand and then type 1 subbase to base of shared accessway. Minimum cover 600mm.

Vent pipe to manufacturers details

Cover to BS EN 124 and BS7903 Shared driveway 1 class D400.

150mm concrete ring for cover support.



SOAKAWAY TO BE STRICTLY INSTALLED TO MANUFACTURERS INSTRUCTIONS AND DESIGN

Excavated formation trimmed flat and all protruding or all sharp objects removed. (Any softspots removed and filled with CGA). 100mm sharp sand bedding course.

Silt trap chamber prior to connection to storage system

TYPICAL CELLULAR SOAKAWAY DETAIL - LONG SECTION

| | | |
|-----|----------------------------|----------|
| B | Amended to 8 units. | 11/02/21 |
| A | First issue for approvals. | 13/01/21 |
| REV | DETAILS | DATE |

SCALE = 1:20@ A1



CHARTERED CIVIL ENGINEER

HM Design
10 The Green
York
YO26 5LR

07919 031289

Client

M BOOTH DESIGN

Drawing Title

TYPICAL DRAINAGE DETAILS
TYPICAL DRIVEWAY DETAILS

Site Address

RESIDENTIAL DEVELOPMENT
LAND OFF CROSS STREET
MONK BRETTON
BARNESLEY

| | | | |
|------------------|------------|-----------------|--|
| Drawn HM | Checked HM | | |
| Drg.No. YH743/6B | | Date 13/01/2021 | |