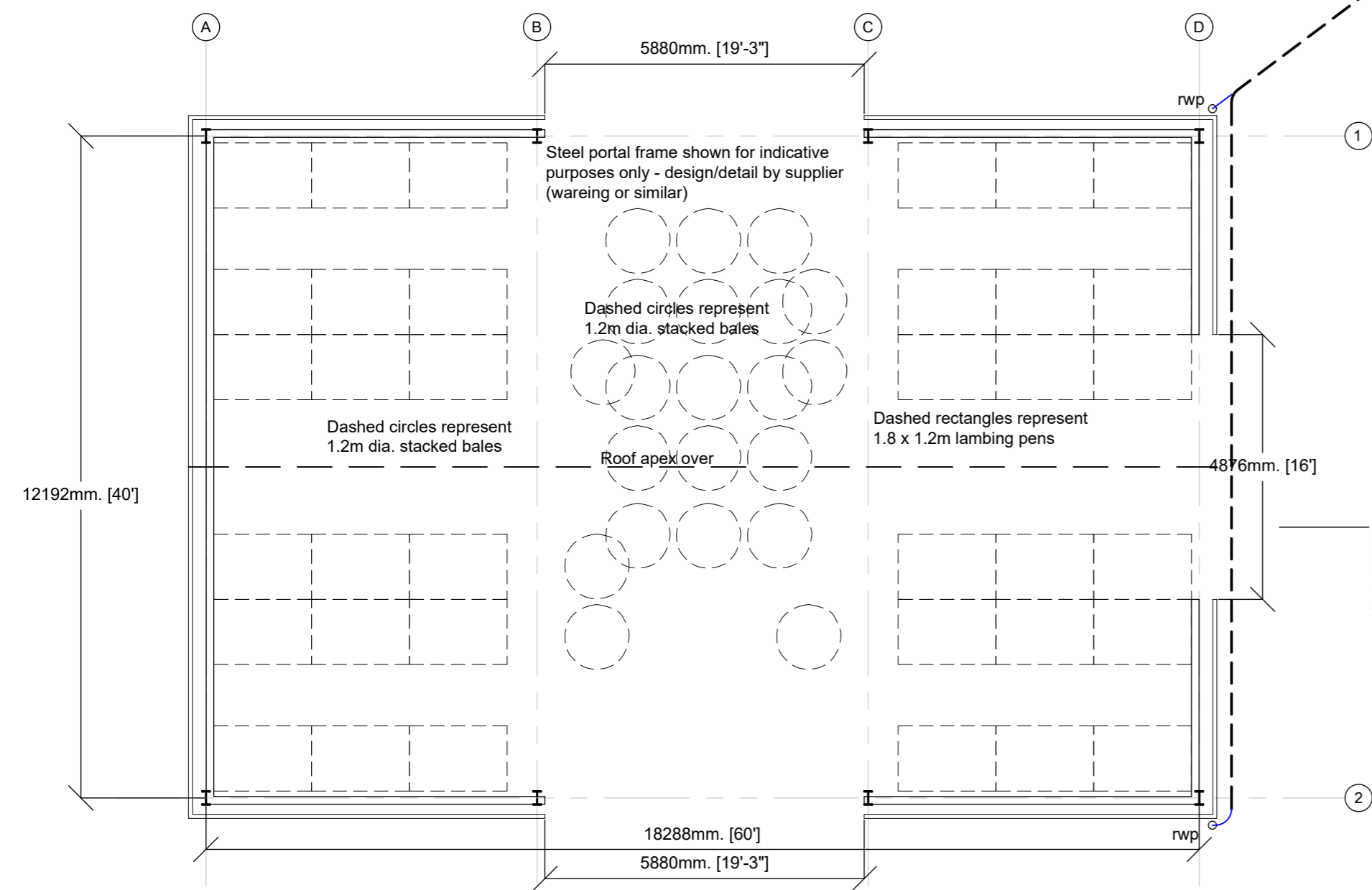
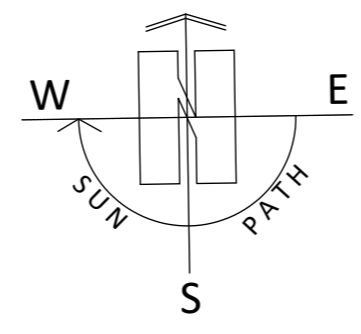
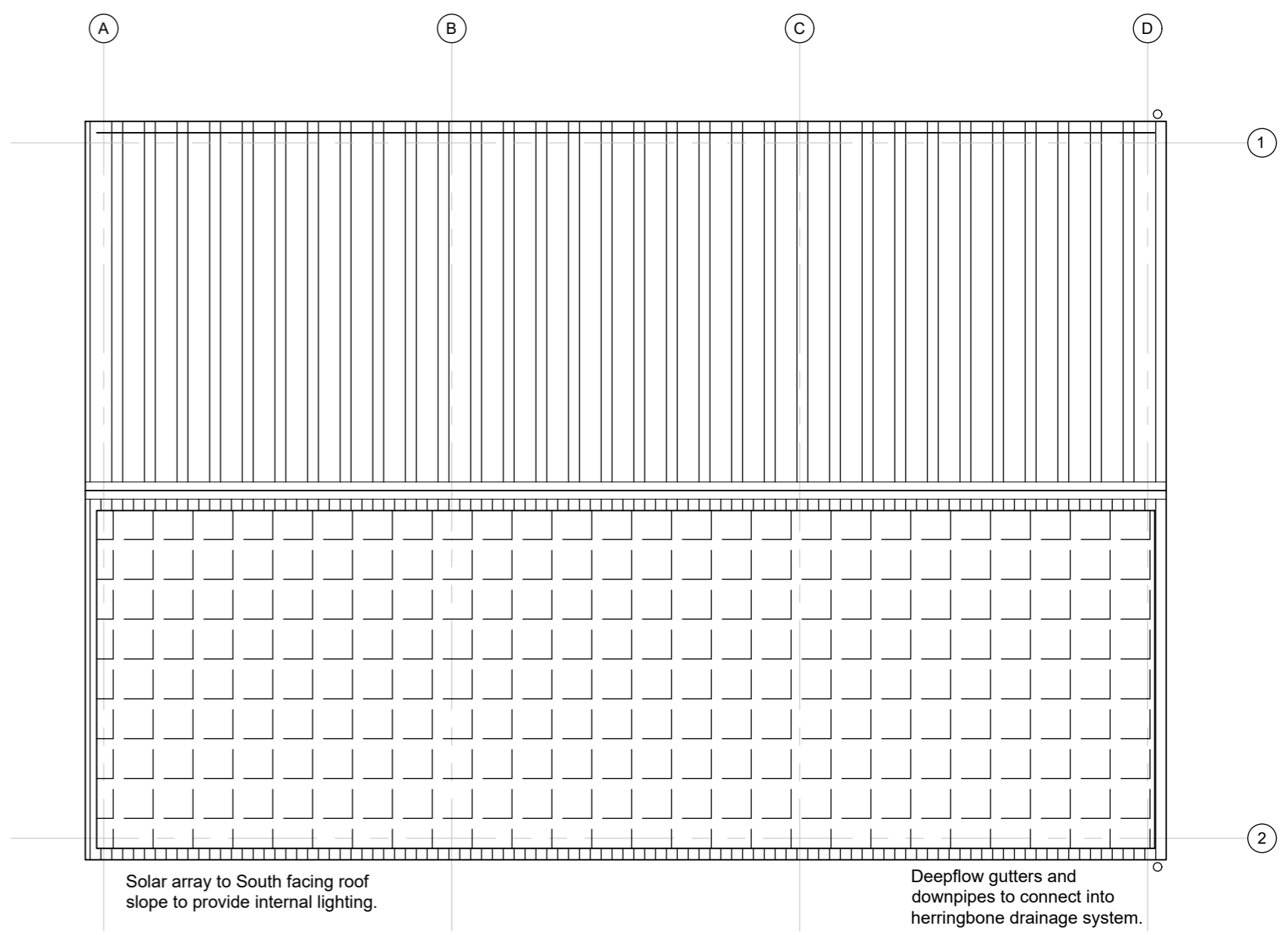




Surface water to be collected in IBC's stored adj to building for cattle use when housed with overflow to discharge into herringbone soakaway system  
RWP's leading to soakways away from adjacent highway.

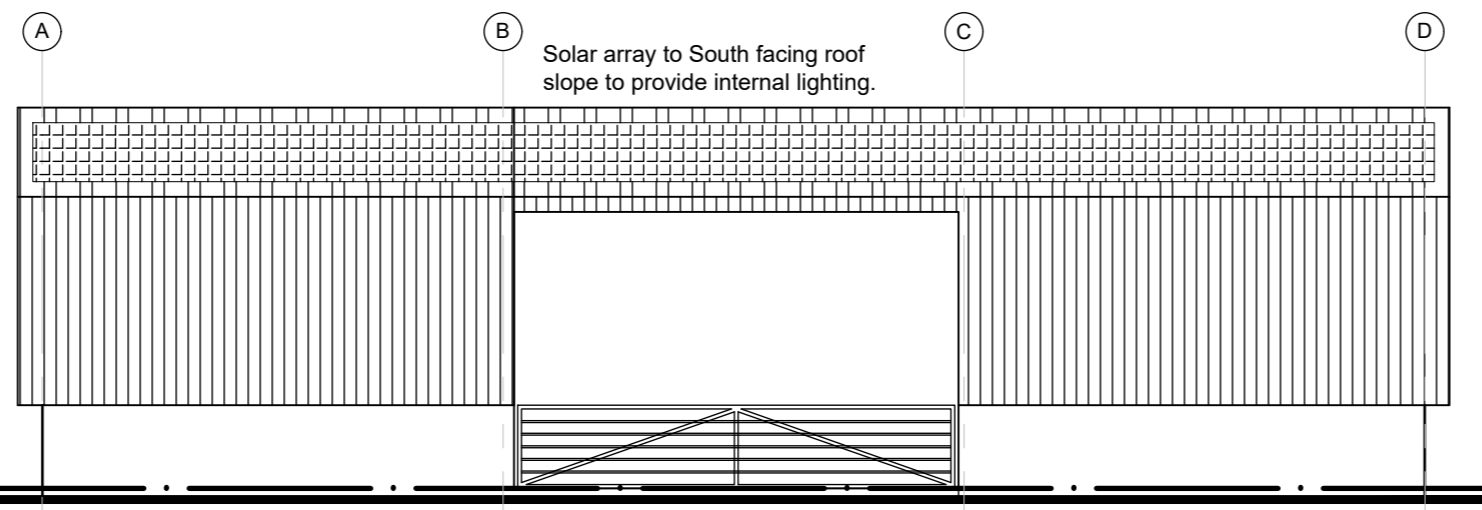


Profiled steel sheeting to roof in Albatross Grey RAL 2408005. 10% of roof area to be translucent roof sheets.

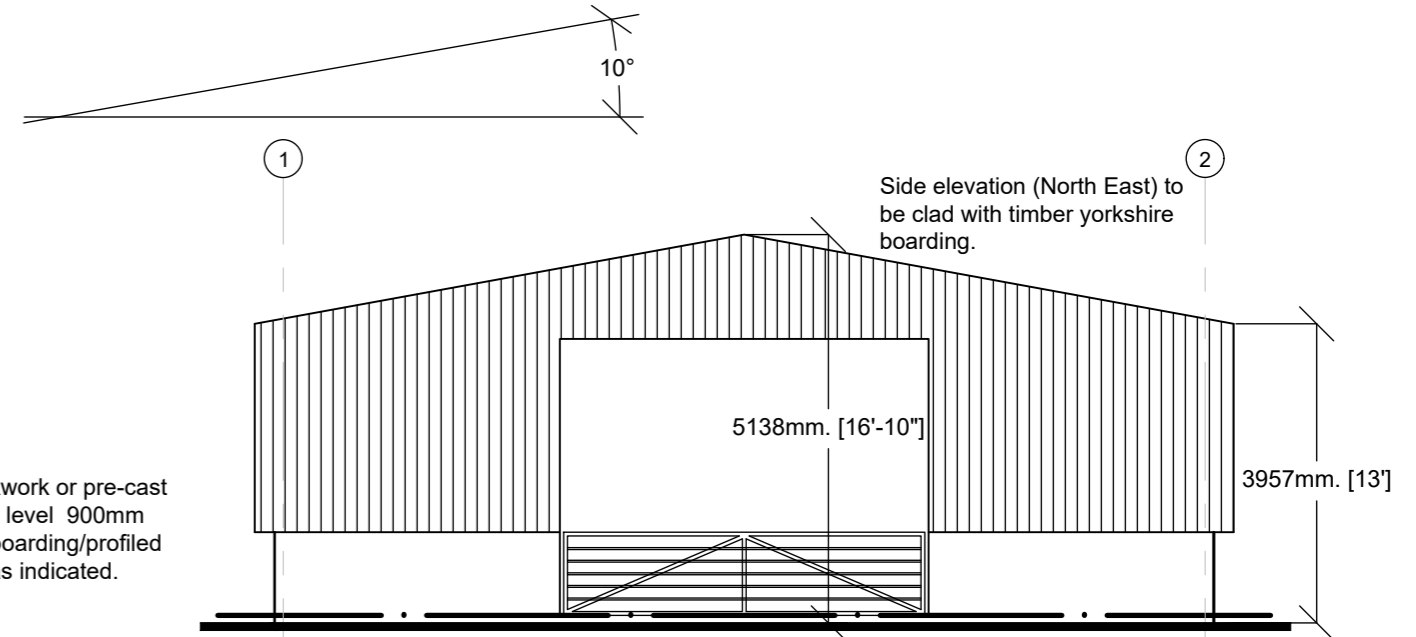


Front (S) Rear (N) and Side (E) elevations to be Yorkshire boarded to provide ventilation to livestock with W Side elevation clad with profiled sheeting in olive green RAL 6003.

3 openings into proposed building to enable easy management and segregation of livestock and to aid with ventilation to prevent housed livestock respiratory disease. All openings to have stock gates with galebreaker (or similar) screens over.

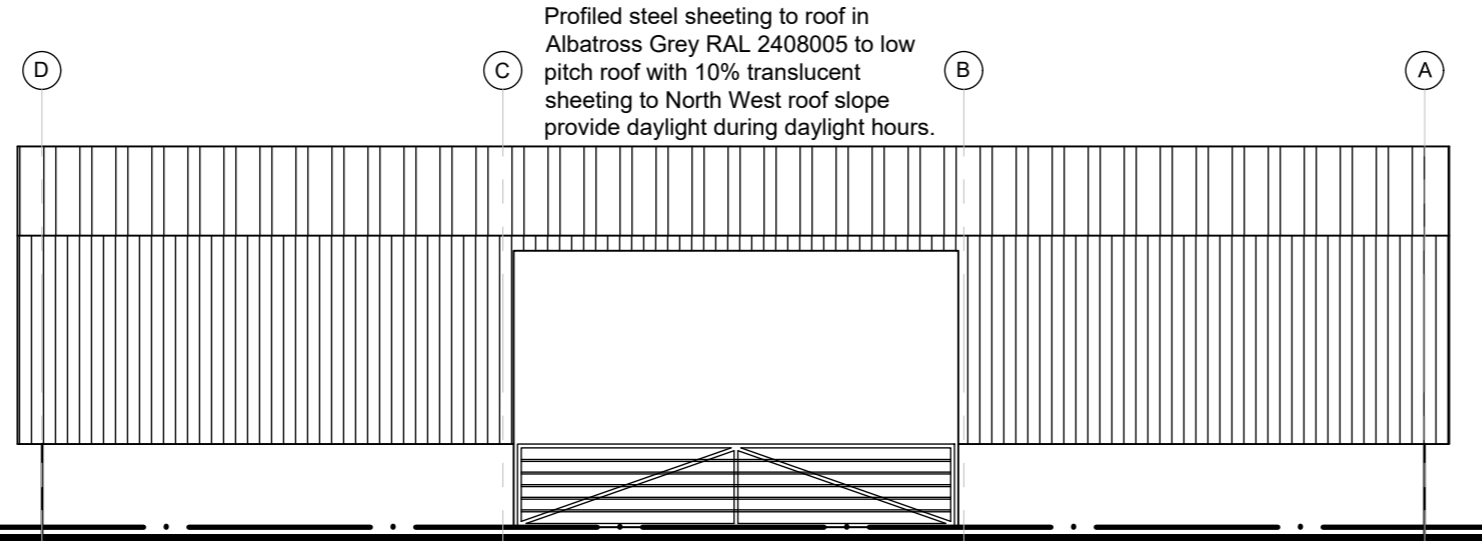


**SOUTH ELEVATION**  
(FRONT)

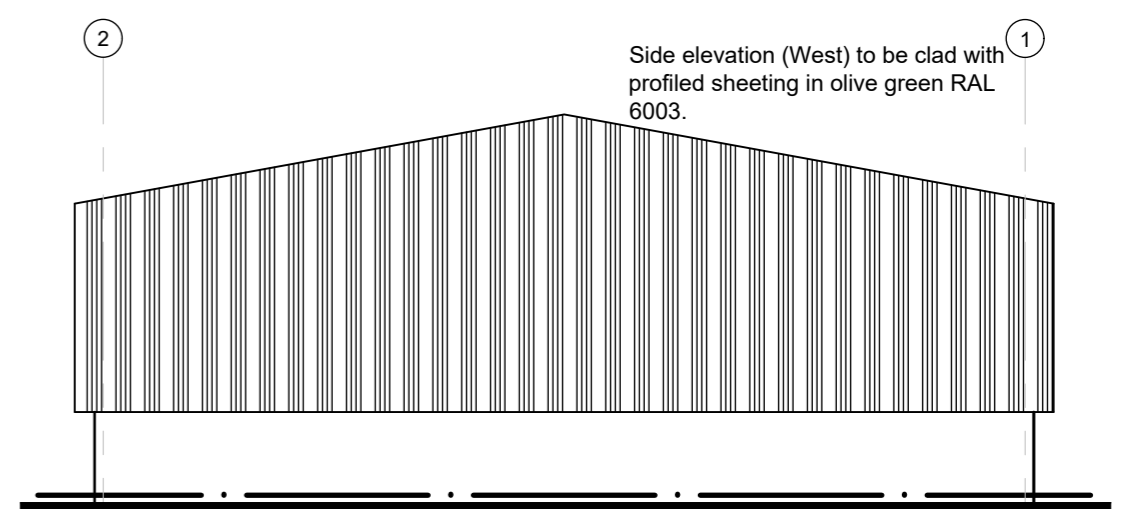


**EAST ELEVATION**  
(SIDE)

140mm concrete blockwork or pre-cast concrete panels to low level 900mm with timber yorkshire boarding/profiled steel sheeting above as indicated.



**NORTH ELEVATION**  
(REAR)



**WEST ELEVATION**  
(SIDE)