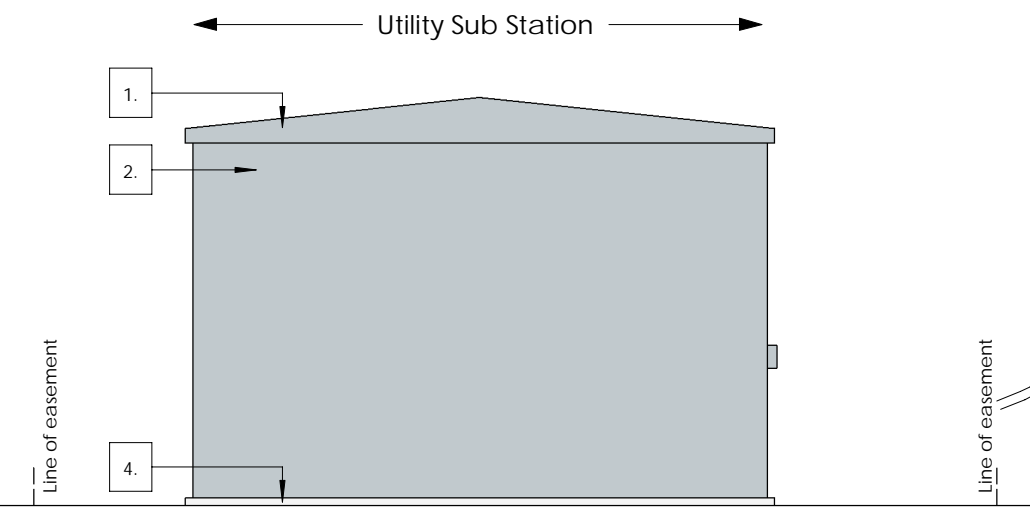
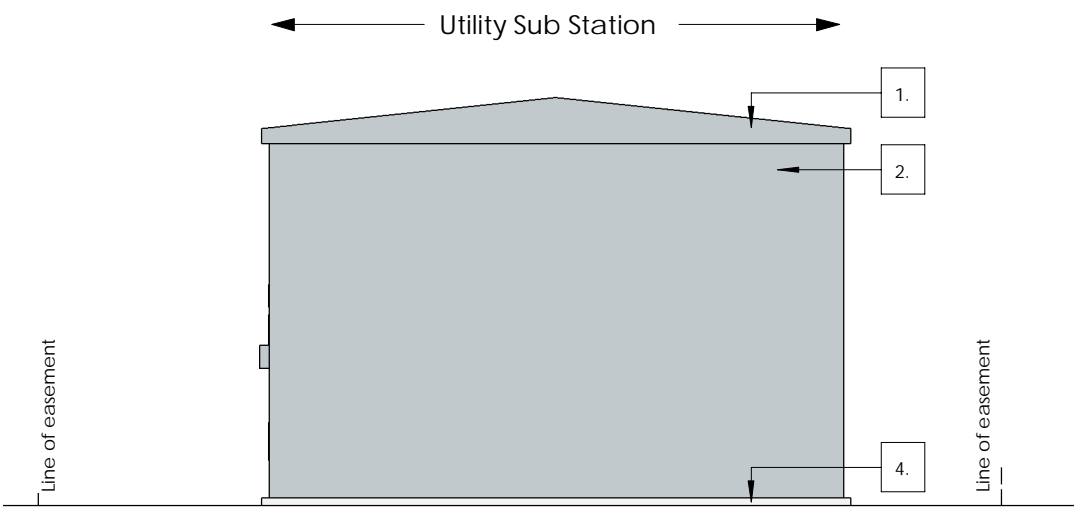


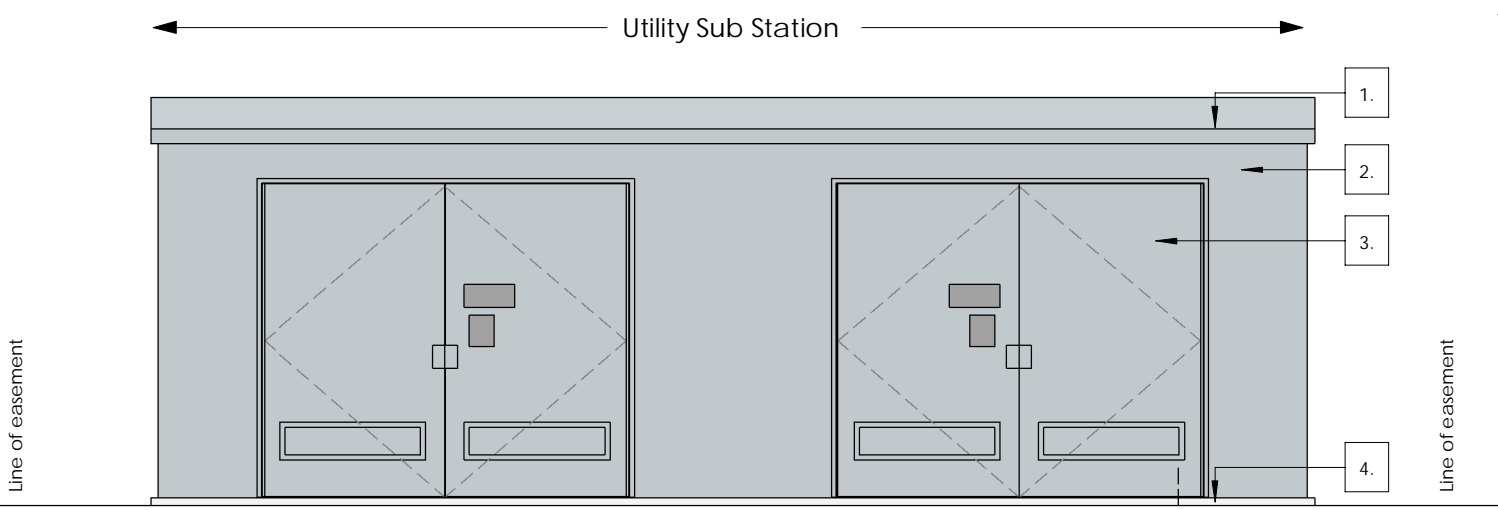
Rear Elevation
1 : 50



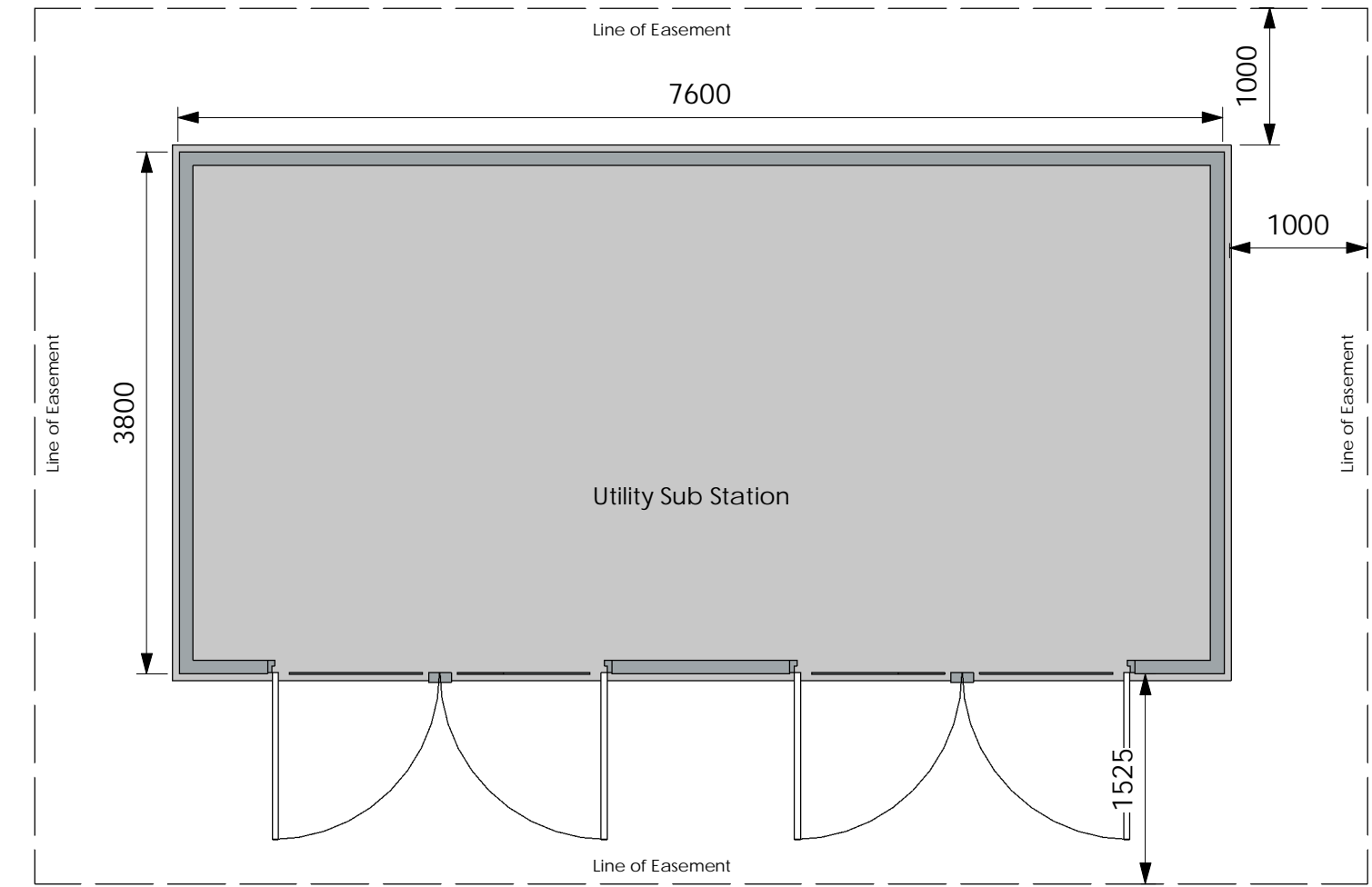
Side Elevation
1 : 50



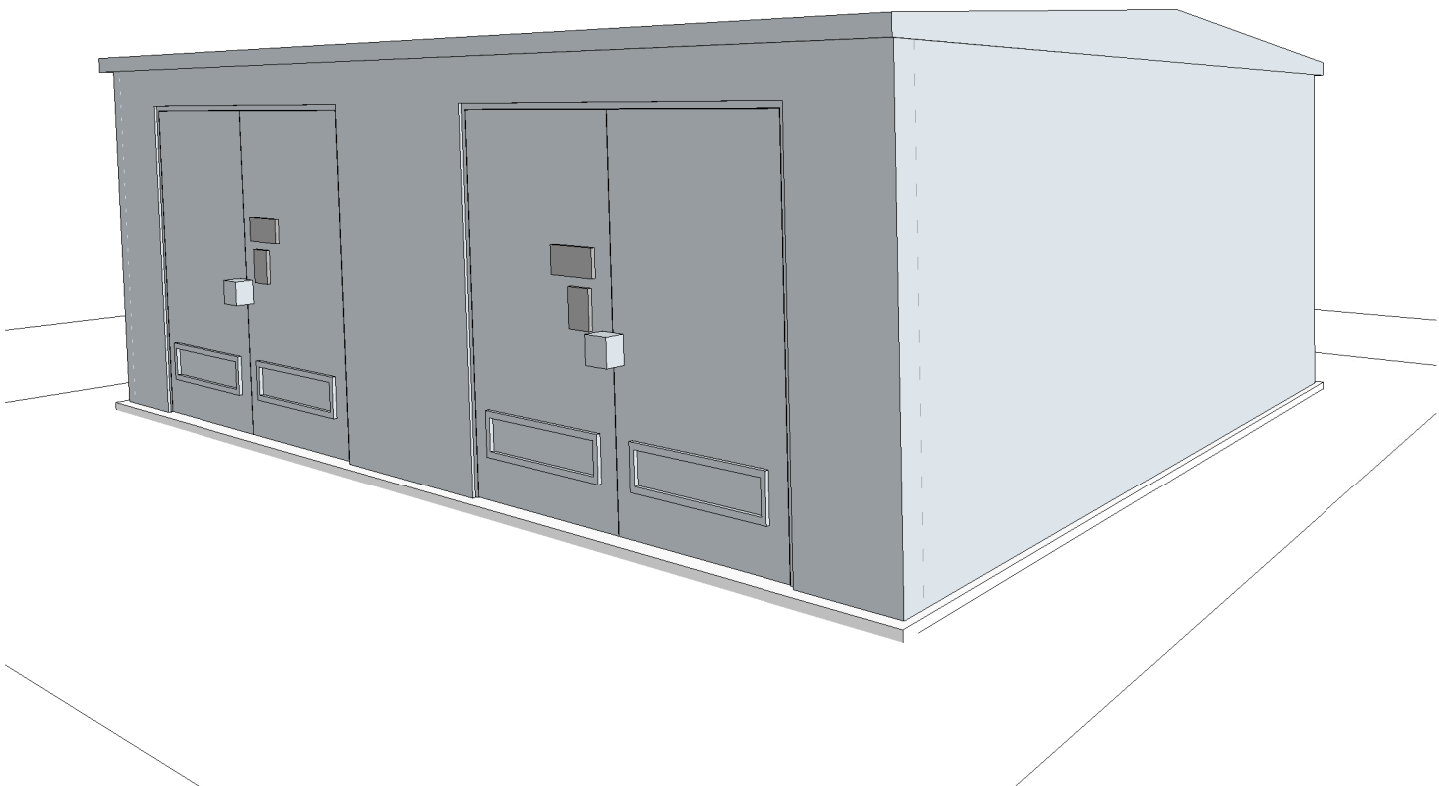
Side Elevation
1 : 50



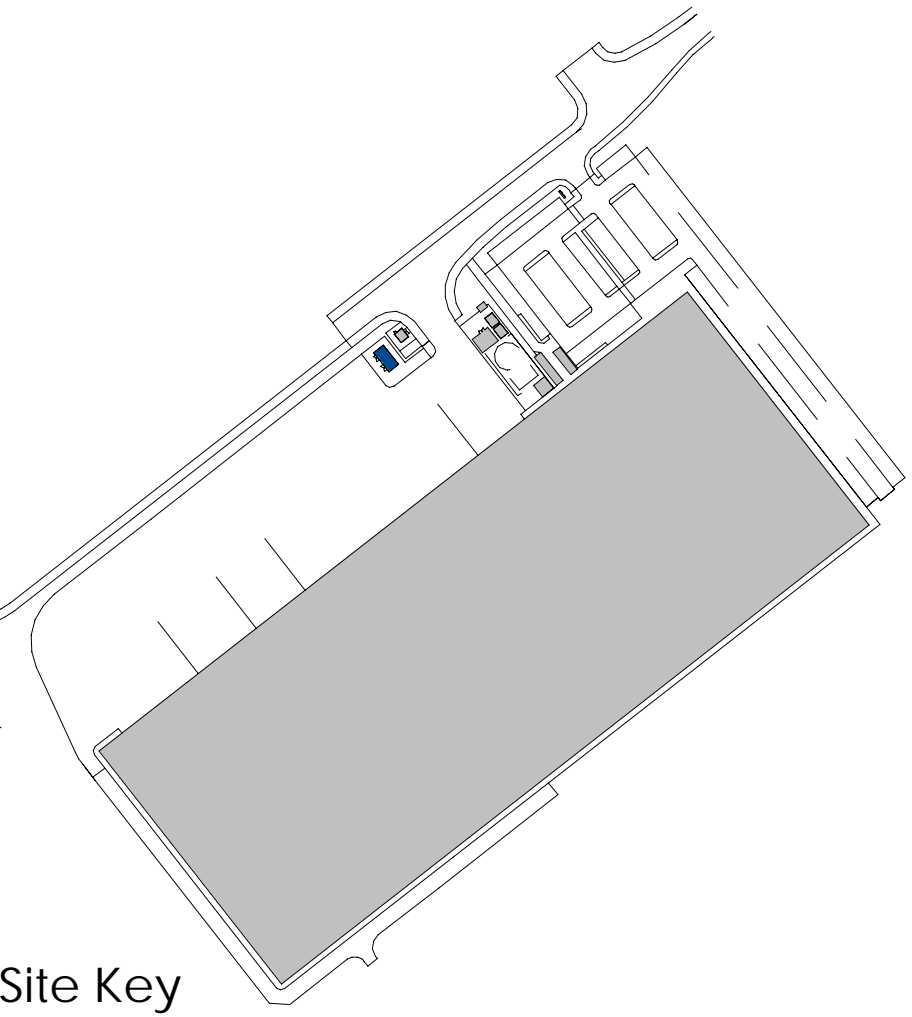
Front Elevation
1 : 50



Plan
1 : 50



Perspective Veiw



Site Key
1 : 2500

Material Notes 1 : 1

1. Roof to be glass reinforced plastic (GRP)
Colour: Window Grey (RAL 7040).
2. Walls To be glass reinforced plastic (GRP)
Colour: Window Grey (RAL 7040)
3. Doors to be glass reinforced plastic (GRP)
Colour: Window Grey (RAL 7040)
4. Cast in-situ concrete raft foundation
subject to Engineers design

The Harris Group Ltd does not accept liability for any deviation to our drawings or specification. This Drawing is copyright and may not be reproduced in whole or part without written authority. Do not Scale from this drawing.

PLANNING DRAWING

This drawing has been prepared for submission to the relevant Local Authority as part of a Planning Application. It is not intended to assist with the pricing of any elements.

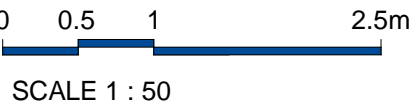
For Structural details refer to the Structural & Civil Engineers detailed design drawings & specifications.

For M&E information, refer to the M&E Engineers and sub contractor's design drawings & specifications.

For Health & Safety information, refer to the Designers Risk Assessments. This drawing is copyright and may not be reproduced in whole or part without written authority.

Drawing Revisions				Drawn	Chk'd By
Rev	Date	Description			
P01	05.11.24	Updated		NBB	JMR

For Sub station location please
refer to Site plan



Architecture
Masterplanning
Interior Design

www.harrispartnership.com

Wakefield Manchester Milton Keynes Reading London Harrogate

Client
Harworth Estates Investments Limited

Harworth

Project Title
PROPOSED PLOT 7 DEVELOPMENT
Dearne Valley Parkway
Rockingham
Barnsley

Drawing Title
Sub Station

Drawn	Checked	Scale @A2	BIM status	Date
NBB	JR	As indicated	S2	11/24

Drawing Status	Rev.	THP Project No
PLANNING	P01	12006-5

Project No.	Originator	Volume	Level	Type	Role	Number
12006-5	-THP	-XX	-XX-	DR-	A-	1034