



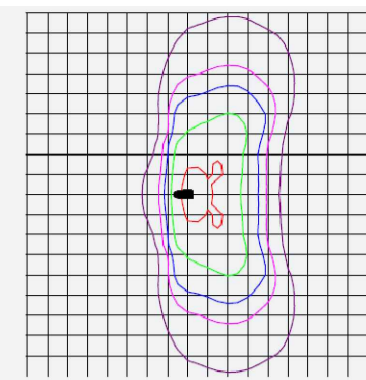
DESIGN NOTES:

a) THE EXTERNAL LIGHTING SCHEME HAS BEEN DESIGNED IN COMPLIANCE WITH TABLE 2 (AND ACCOMPANYING NOTES) OF THE ILP PUBLICATION 'GUIDANCE NOTE GN01/21 THE REDUCTION OF OBTRUSIVE LIGHT'

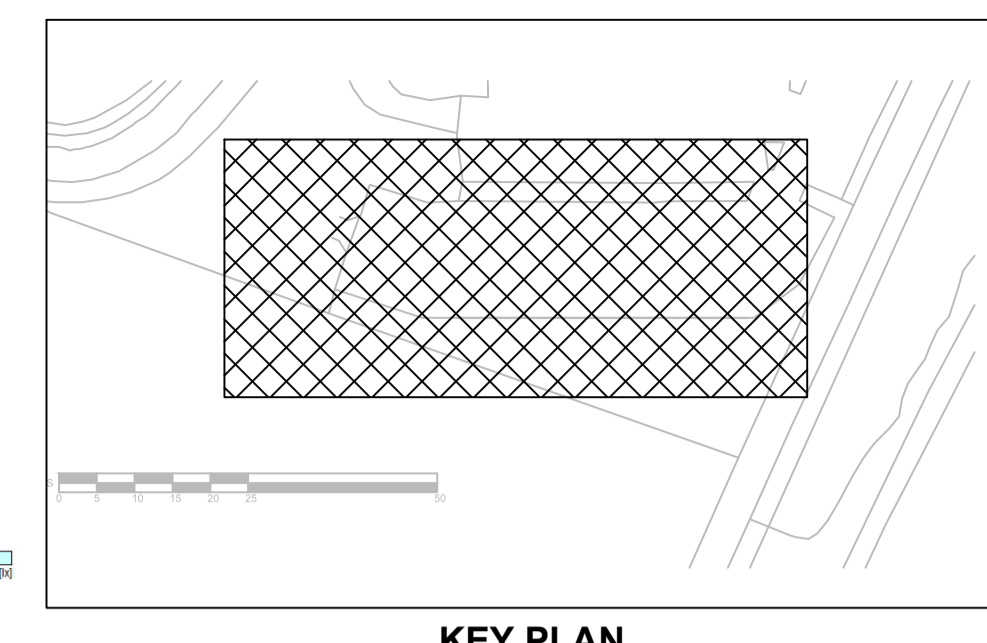
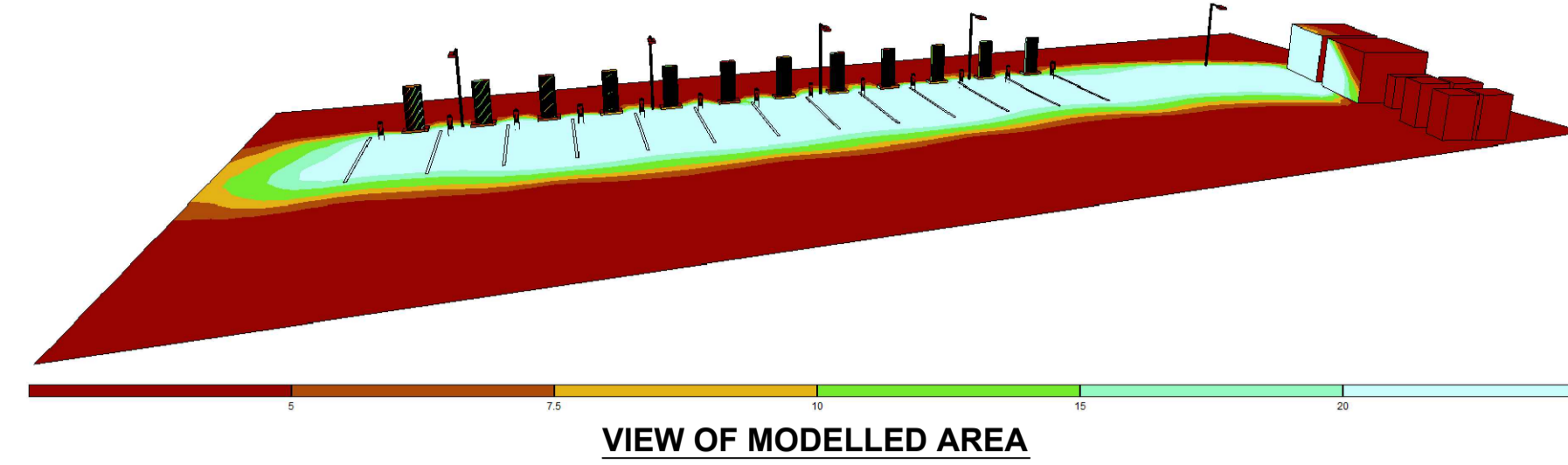
b) THE BOLLARD LIGHTING WILL BE AUTOMATICALLY SWITCHED OFF BETWEEN 2300Hrs AND 0700Hrs USING TIME SWITCH CONTROLS.

c) THE COLUMN LUMINAIRES WILL BE FITTED WITH MICROWAVE PRESENCE DETECTION TO SWITCH ON AUTOMATICALLY WHEN THE AREA IS OCCUPIED

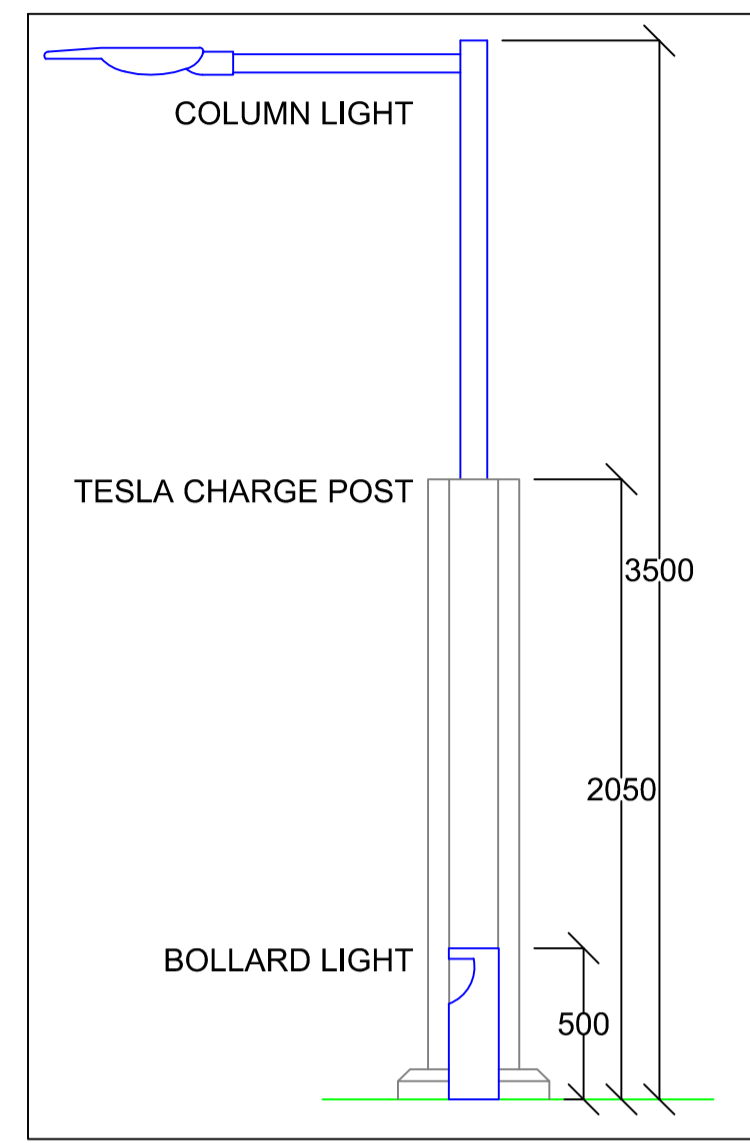
d) THE SELECTED 2700k LED LUMINAIRES HAVE ASYMMETRIC LIGHT DISTRIBUTION AND PROJECT NO UPWARD LIGHT (PHOTOMETRIC DATA SHOWN OPPOSITE).



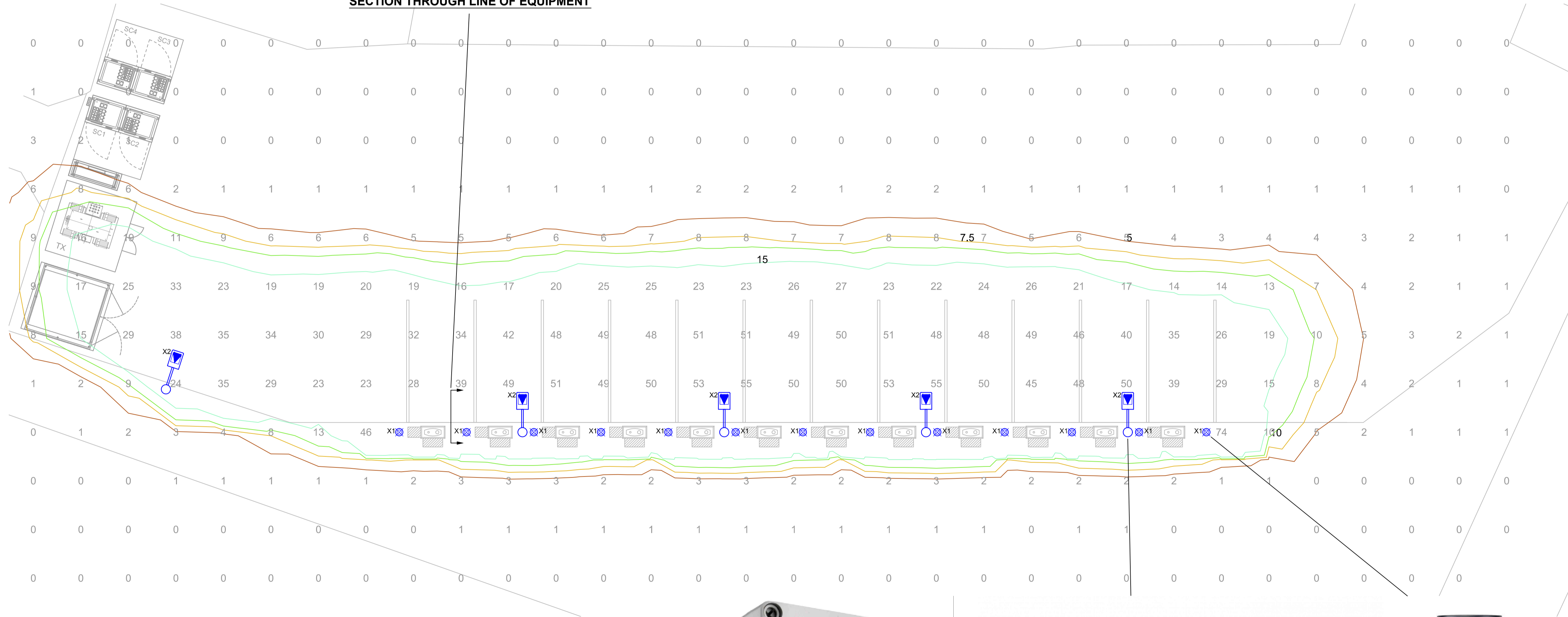
Spill Shield Street Optic 70°
Roadways, pathways and narrow areas limiting obtrusive light



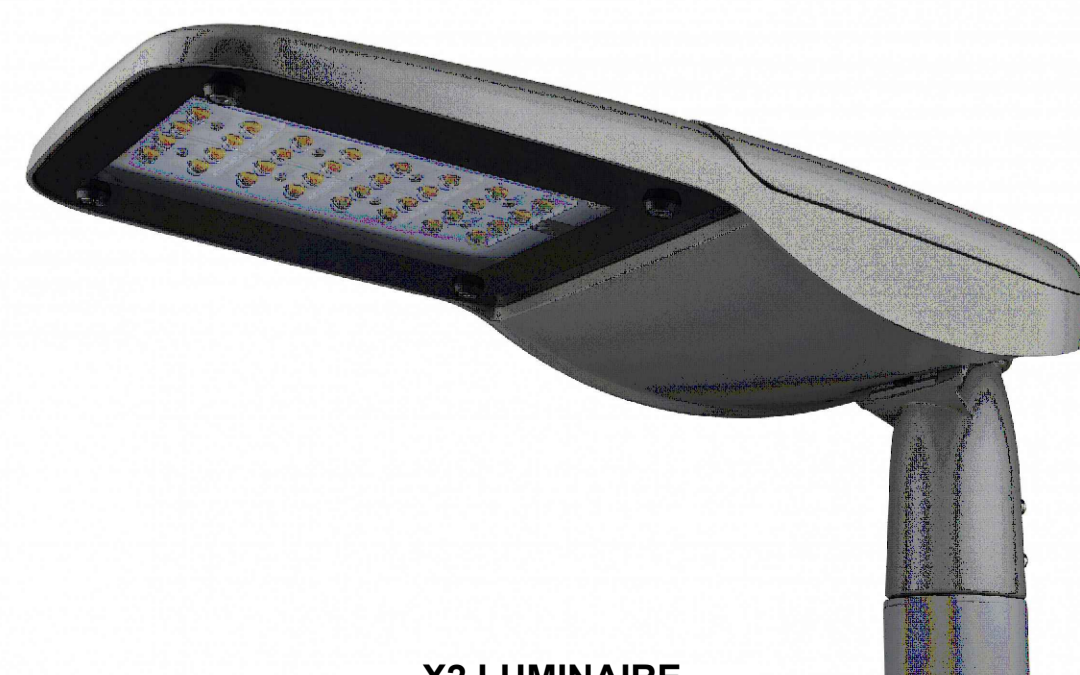
COLUMN LUMINAIRE PHOTOMETRIC DATA



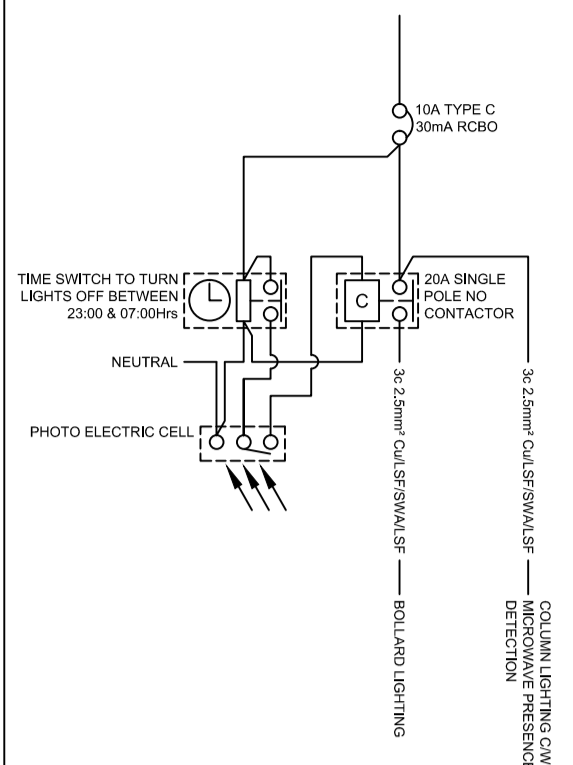
SECTION THROUGH LINE OF EQUIPMENT



LUMINAIRE LEGEND	
	JCC - COMMERCIAL BOLLARD - 14W - 1190lm - IP66 - IK10 - 500mm - BLACK FINISH - SIDE COVER ACCESSORY CODE: JC17079 (Bollard) + JC17077 (Cover)
	KINGFISHER VIVA-CITY PRO - 40W LED 2700K 1050lm C/W AYB70 STREET OPTIC ON 3.5M GALVANISED TAPERED COLUMN WITH 750mm OUTREACH ARM CODE: VCYP-AYB70-27-10-40DSHIELD-02



DO NOT SCALE FROM THIS DRAWING. IF IN DOUBT ASK.



EXTERNAL LIGHTING SINGLE LINE DIAGRAM

Date	Rev	Description
29/01/26	06	Section Through Equipment Added
03/11/25	05	Bollards Reinstated & One Column added
15/10/25	04	Bollards removed
15/10/25	03	Columns added bollards retained
29/02/24	02	Columns replaced with bollards
26/02/24	01	Amended to comments, Light Spill Reduced
16/02/24	00	Draft issue for internal comment



Project
THE OLD POST OFFICE, HAIGH

Title
CHARGING AREA LIGHTING WORKS

Design: RV2P Drawn: RV2P Date: FEB '24

Scale: 1:100 @ A1

Background Drawing: NONE

Drawing No. RV2P-E01 Rev 06

Status: FOR COMMENT