

**GROUND FLOOR**

**MAIN BAR AREAS:**

- Retain existing timber flooring
- Full redecoration
- New light fittings
- New TV's
- new furniture/bric a brac

**BAR SERVERY**

- Strip + repolish bar top
- Redecorate bar front
- New over bar lights + gantry
- Refurbish back bar
- Add feature tiling
- Retain/repair safety flooring

**GLASSWASH**

- Repair existing flooring

**SNUG**

- Remove store area and form snug area

**BEER TERRACE**

- Store clean all stone flags
- Walls copings
- Repoint all steps as required
- Redeck w/ highlight all stone steps

**FIRST FLOOR**

**LADIES WC**

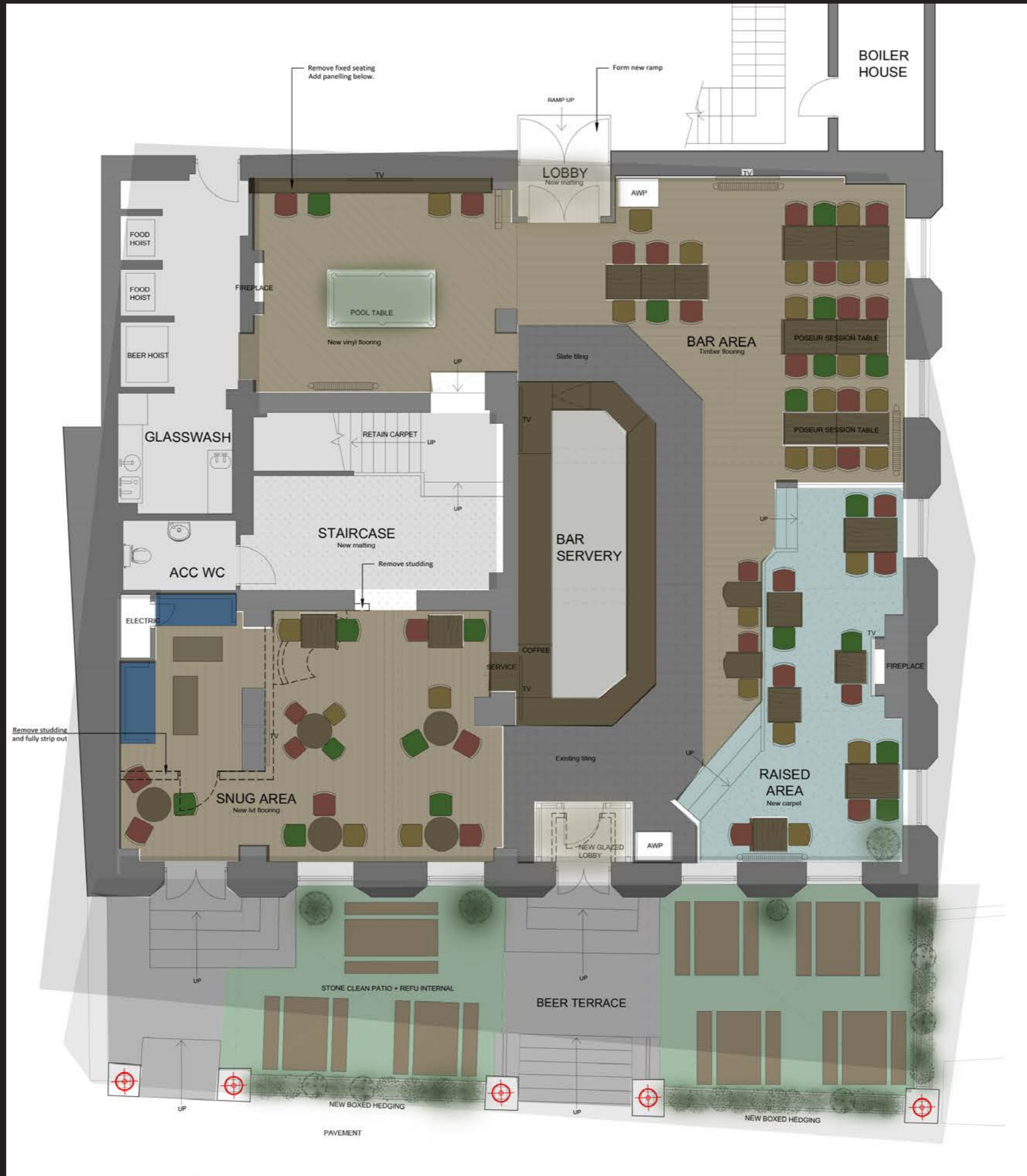
- Retain vinyl to cubicles, cut back to line of doors
- Full redecoration throughout
- Repair sanitary ware

**GENTS WC**

- Retain + clean existing flooring
- Retain wall tiling
- Full redecoration throughout
- Repair sanitary ware

**BEER CELLAR**

- Check/repair leak in concrete floor
- Replace perimeter floorings/ seal gully.



Paint ceiling, paint darker bays



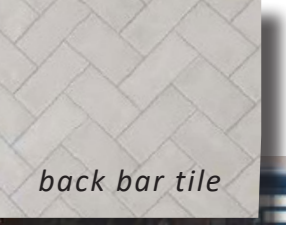
Paint colours



Allow for new gantry over bar with light rig.



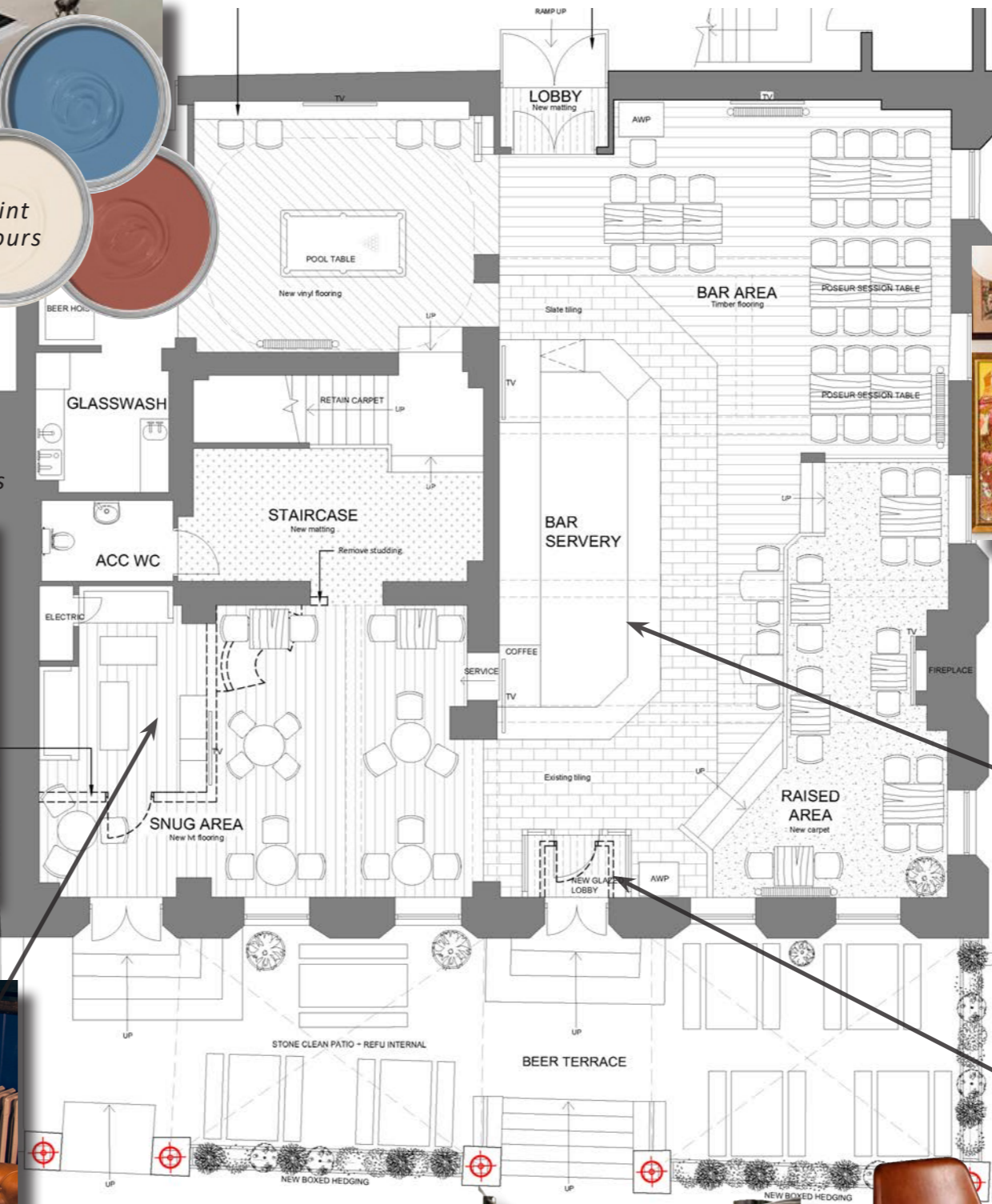
back bar tile



Decorative mirrors



Large pendants



Bright eclectic artwork

Bar Servery



Velvet drapes to break up areas



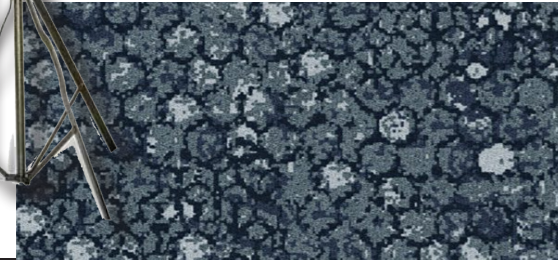
Refurbish existing stools & poseur tables

Wallpaper



Low lounge area with soft seating

Floor lamp



New carpet



Bar face colour

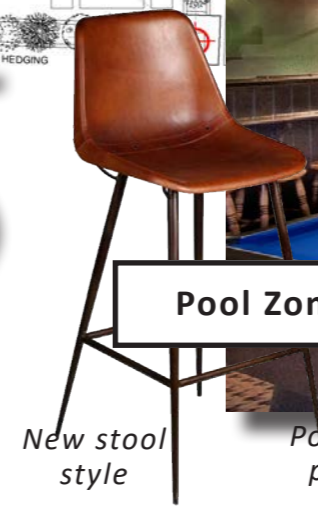
Retain bar, strip, stain & polish bar top & half paint front.

Terrace



New planters & planting. New walk in benches & festoon lighting over

Pool Zone



New stool style

Pool table area, painted panelling & pot shelf.

New glazed lobby



New oak vinyl flooring

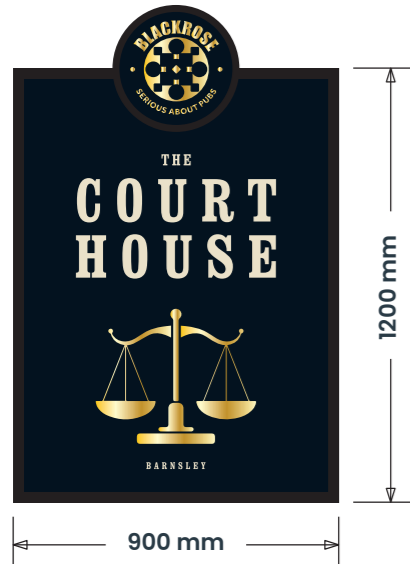


THE COURTHOUSE - EXTERNAL SIGNAGE



ITEM 01 (Qty 1) PICTORIAL

- Pictorial sign
- Featuring:**
- Bullnose Trim Powdercoated RAL 9004
  - Digitally Printed Pictorial Content
  - Fixed with new boot to existing post
  - LED Trough Light (warm white)
- Scale 1:20



ITEM 05 (Qty 10) LANTERNS

Existing Lanterns to remain

ITEM 02 (Qty 2) INDIVIDUAL LETTERS

Retain existing House Name Letters  
Replacement letter 'E'

SIZE TBC



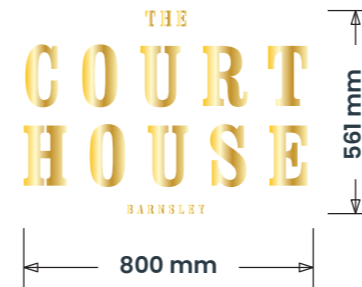
ITEM 03 (Qty 8) DECALS

Window Decals

**Featuring:**

- Gold effect window decals

Scale 1:20



ITEM 07 (Qty TBA) FESTOON LIGHTING

Festoon Lighting to front

ITEM 06 (Qty 1) NAMEBOARD

Curved nameboard to rear

**Featuring:**

- Bullnose Trim Powdercoated RAL 9004
- Panel finished LG Basalt
- Applied vinyl letters

Scale 1:20



ITEM 04 (Qty 10) LED FLOOD LIGHTS

50W LED Flood Lights

**Featuring:**

- 50W LED Flood Lights on arms

SIGN COLOUR

- LG Basalt
- Gold
- DH Linnet White
- Ral 9004

BUILDING COLOUR

- LG Basalt
- White

BRAND TYPEFACES

Primary :  
CLARENDON BOLD COND  
BOLD