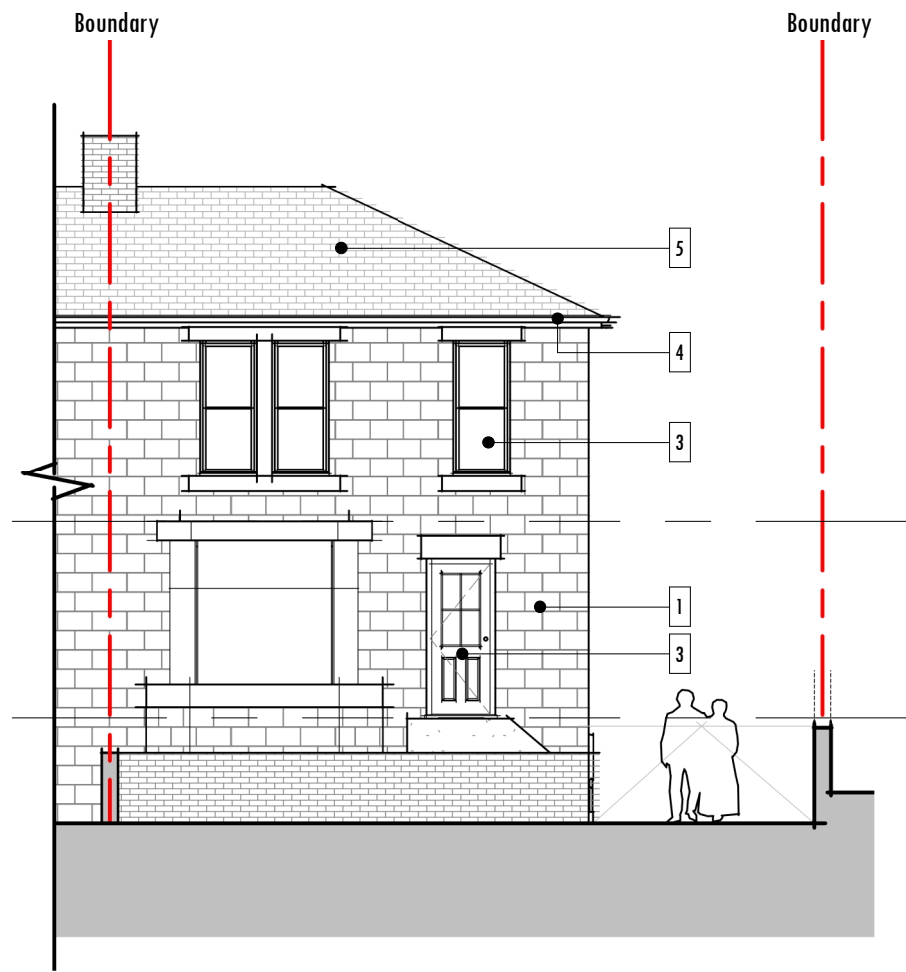
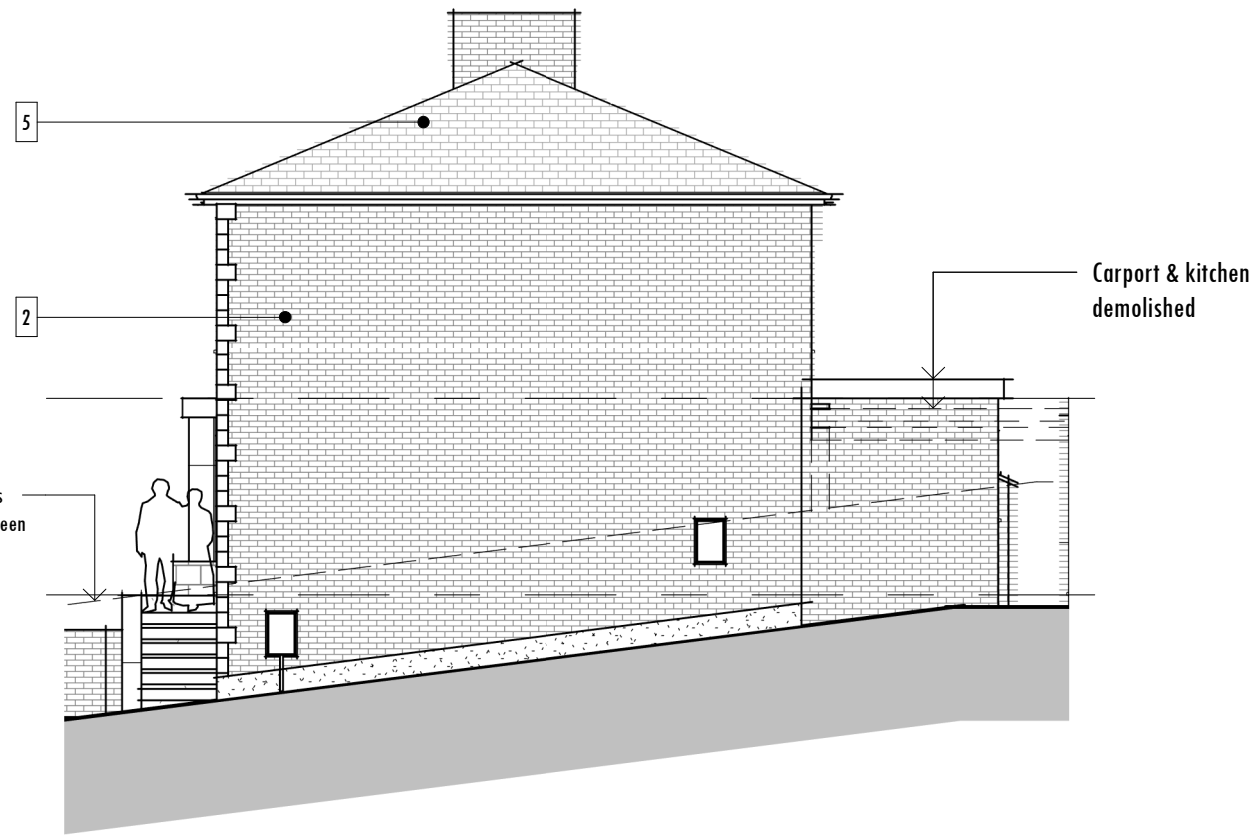


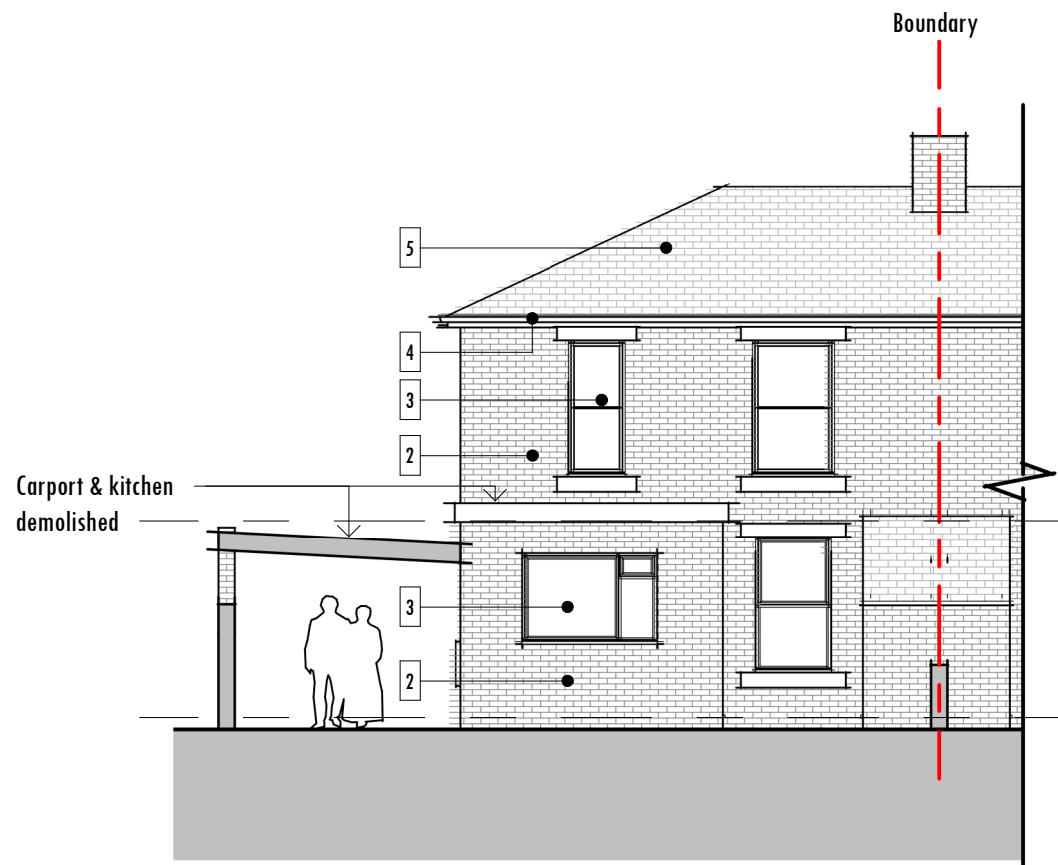
Rev	Description	Date



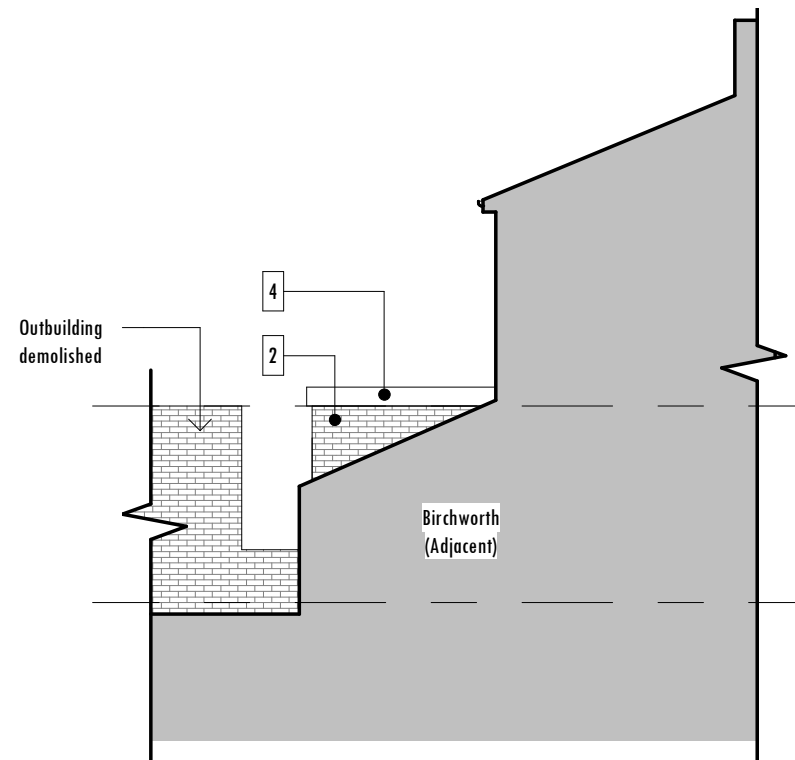
Front Elevation
1 : 100



Side Elevation
1 : 100



Rear Elevation
1 : 100



Side Elevation
1 : 100

Materials Key

Ref	Material
1	Masonry (Stone) Colour: Buff
2	Masonry (Brick) Colour: Red
3	uPVC Double Glazed Doors & Windows Colour: White
4	uPVC Guttering, Fascia & Fall Pipes Colour: Black
5	Slate Tiles Colour: Grey

