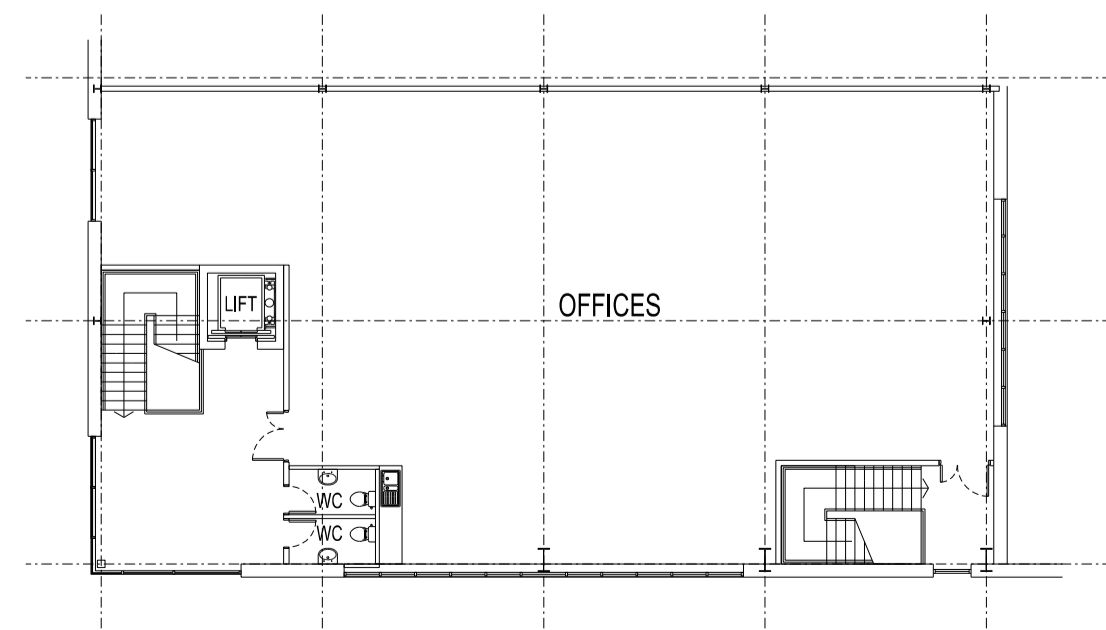
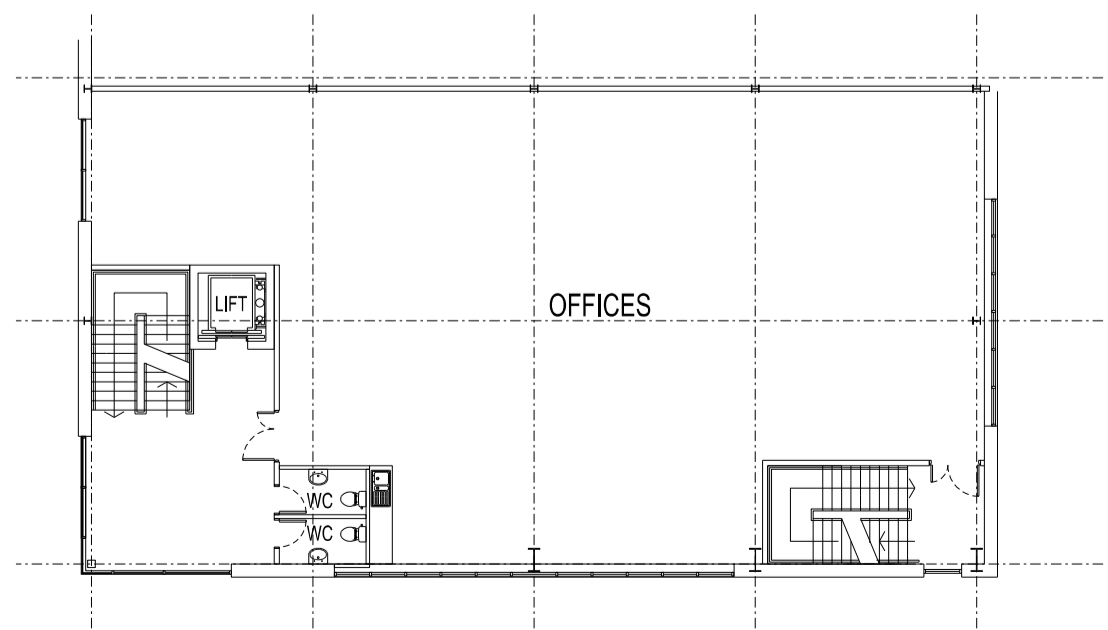
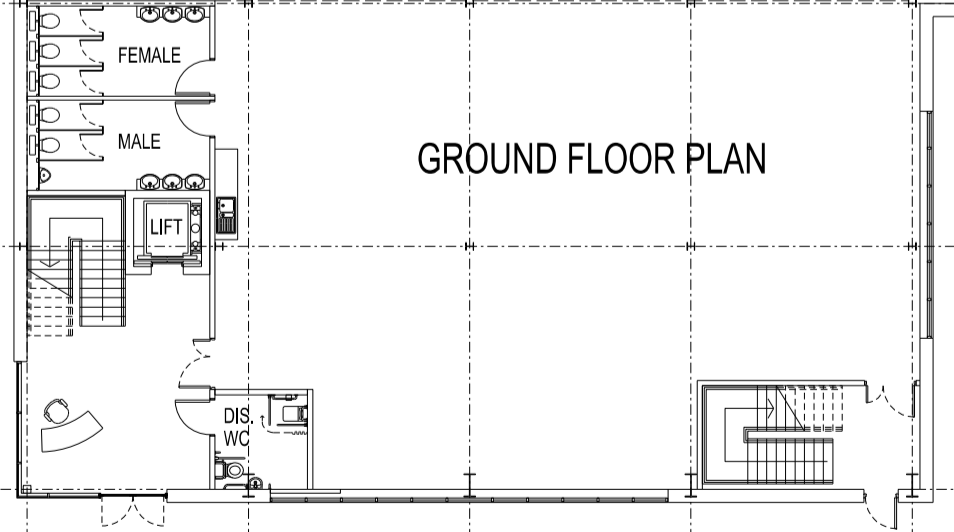
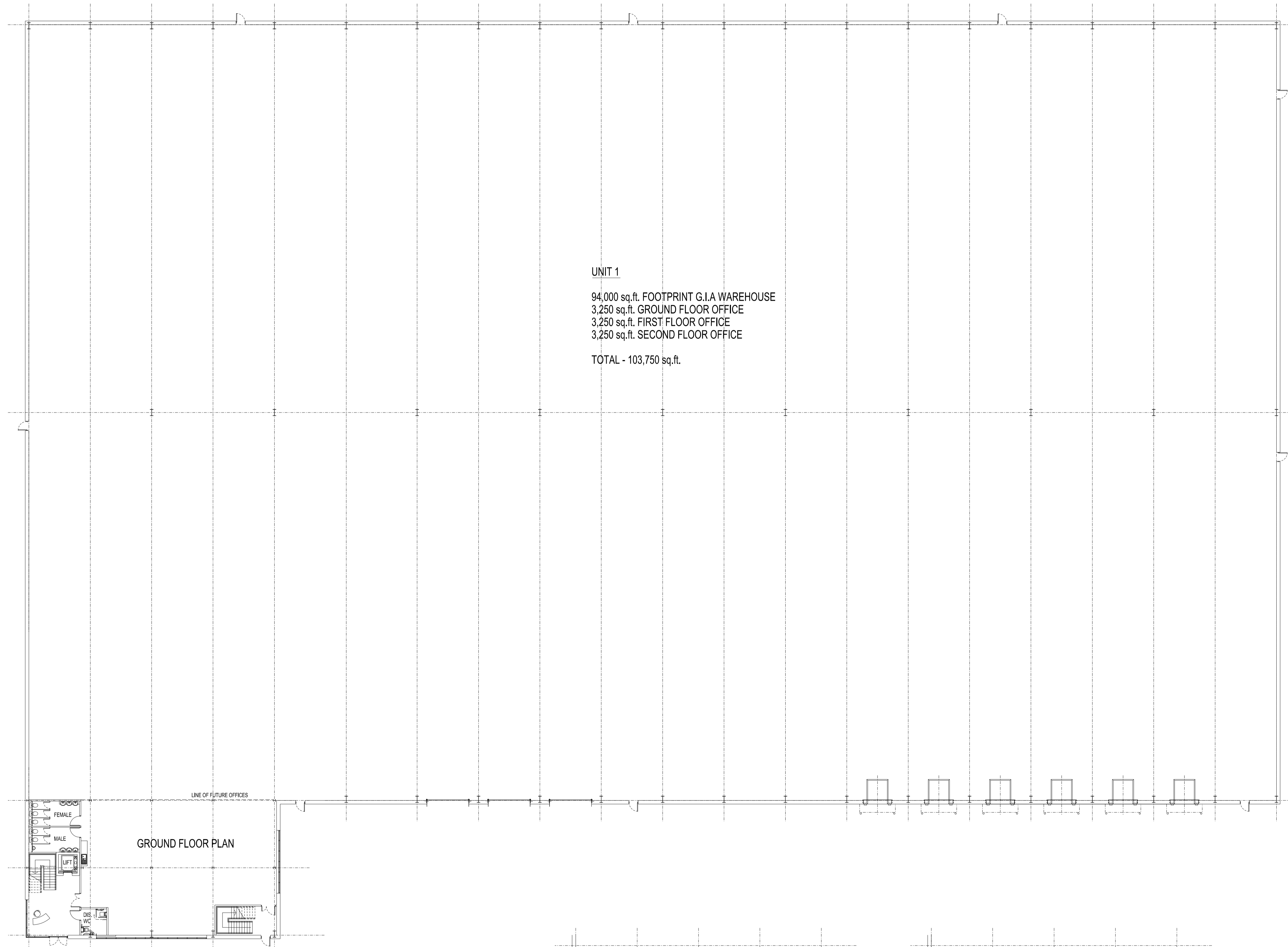


■ COPYRIGHT
 THIS DRAWING IS THE SOLE COPYRIGHT OF KILMARTIN PLOWMAN & PARTNERS LTD AND NO REPRODUCTION IS PERMITTED WITHOUT THE WRITTEN PERMISSION OF KILMARTIN PLOWMAN & PARTNERS LTD.
 DO NOT SCALE FROM THIS DRAWING AND CHECK DIMENSIONS ON SITE. DIMENSIONS SHALL BE BROUGHT TO THE ATTENTION OF KILMARTIN PLOWMAN & PARTNERS LTD.
 WORK AND MATERIALS MUST COMPLY WITH THE CURRENT BUILDING REGULATIONS AND CODES OF PRACTICE AND BE KEPT IN CONFORMANCE WITH BUILDING SPECIFICATIONS AND OTHER BUILDING REGULATIONS.

KPP
 ARCHITECTS
 KILMARTIN PLOWMAN & PARTNERS LIMITED

UNIT 1
 94,000 sq.ft. FOOTPRINT G.I.A WAREHOUSE
 3,250 sq.ft. GROUND FLOOR OFFICE
 3,250 sq.ft. FIRST FLOOR OFFICE
 3,250 sq.ft. SECOND FLOOR OFFICE
 TOTAL - 103,750 sq.ft.



FIRST FLOOR PLAN

SECOND FLOOR PLAN

REV	DRAWN	DATE	DESCRIPTION
P5	JW	FEB 16	SECOND FLOOR ADDED
P4	TS	JAN 16	GF OFFICES REMOVED
P3	AB	DEC 15	UPDATED FOLLOWING AGENTS COMMENTS
P2	SP	DEC 15	UPDATED AS PER CLIENT MEETING

KPP
 ARCHITECTS
 KILMARTIN PLOWMAN & PARTNERS LIMITED

- LODGE HOUSE 12 TOWN STREET
 HORSFORTH LEEDS LS18 4RJ
- T: 0113 239 0460 F: 0113 239 0475
- E: architects@kpp-leeds.co.uk
- W: www.kpp-leeds.co.uk

PROJECT TITLE
 TANKERSLEY PARK
 BARNESLEY

TITLE
 UNIT 1 BUILDING PLAN

STATUS	PLANNING	SCALE	1:200 @A1	DATE	AS
FILE	P:\PROJECTS\2	DRAWING	- 202	REVISION	- P5
PROJECT	- 1979				