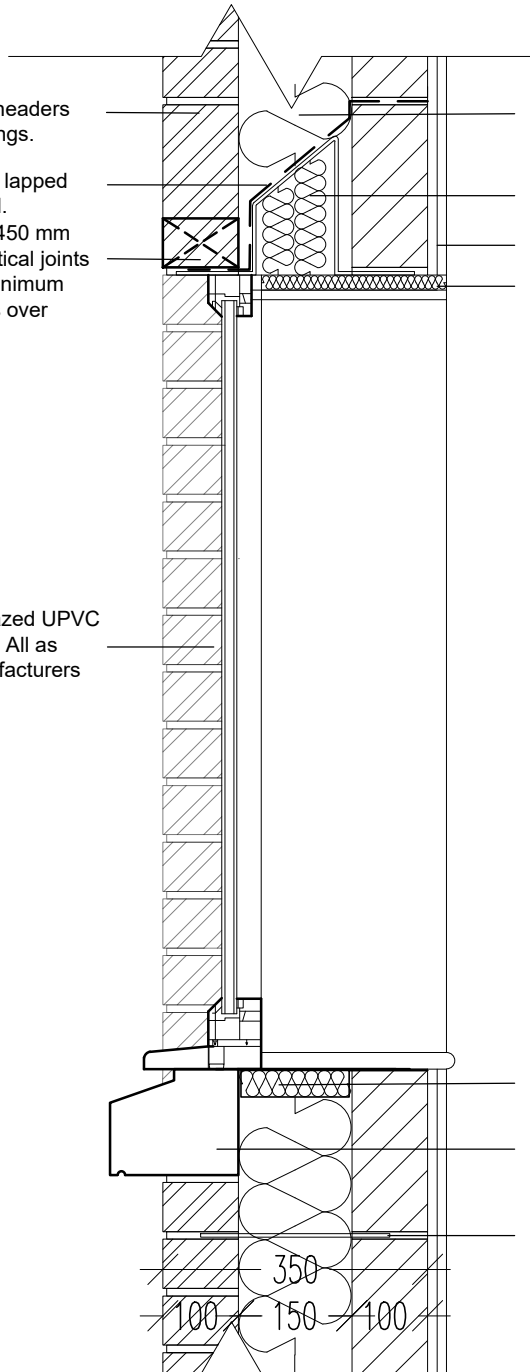


Soldier course headers above all openings.
 Tray DPC to be lapped over top of lintel.
 Weep holes at 450 mm c/c (max) in vertical joints above lintel. (Minimum 2 no weep holes over openings)

Grey double glazed UPVC window frames. All as specialist manufacturers details.



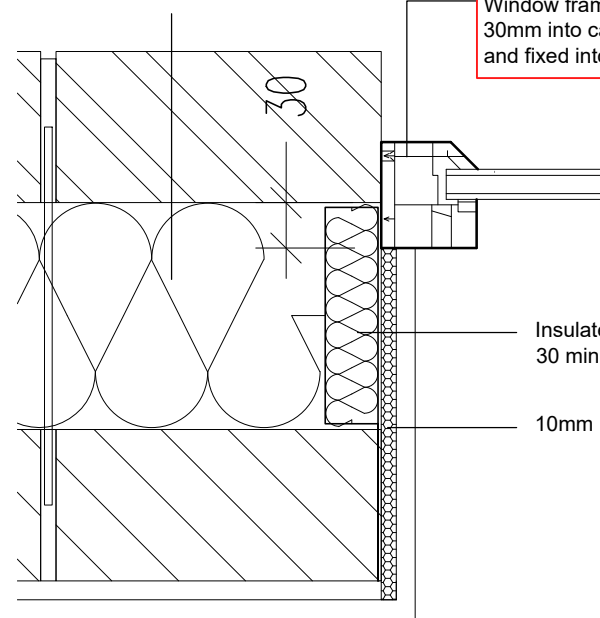
102.5mm Brickwork, 150mm cavity with full blown Knauf Superfil 34 Insulation. 100mm Plasmor Aglite blockwork.
 HT/S+ 150 High therm lintel.
 12.5mm plasterboard on dot and dab.
 20mm Insulated Plasterboard.

Insulated cavity closer with 30 minute fire resistance.

Cast Stone Cill 140mm High

Wall ties to suit external cavity wall construction to be as structural engineer specification. To be built with slight slope downwards to outside facing wall.

102.5mm Brickwork, 150mm cavity with full blown Knauf Superfil 34 Insulation. 100mm Plasmor Aglite blockwork.



NOTE:
 Window frame set back 30mm into cavity closer and fixed into brickwork.

Insulated cavity closer with 30 minute fire resistance.

10mm Insulated plasterboard

Window Jamb Detail Scale @ 1:5

Project: Saul Homes Standard Construction Details			
Title: Head, Cill & Jamb Detail			
Scales: 1:10 @ A4	Drawn: HP	Date: 10 / 25	Checked:
Drawing no: SH / ST / 151	Rev:		



Burntwood Office Park
 Common Road
 Brierley
 Barnsley
 S72 9ET
 T: 01226 707090
 F: 01226 707091
 info@saulhomes.co.uk
 www.saulhomes.co.uk

SAUL HOMES

Head & Cill Detail