

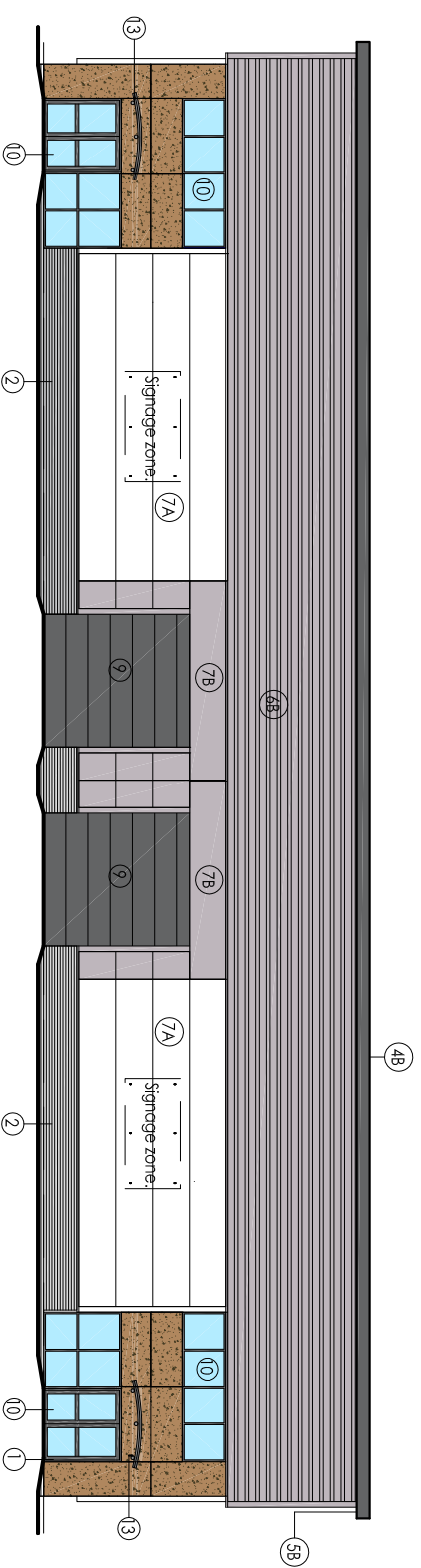
FLOOR PLAN. (1:200)

UNIT 1

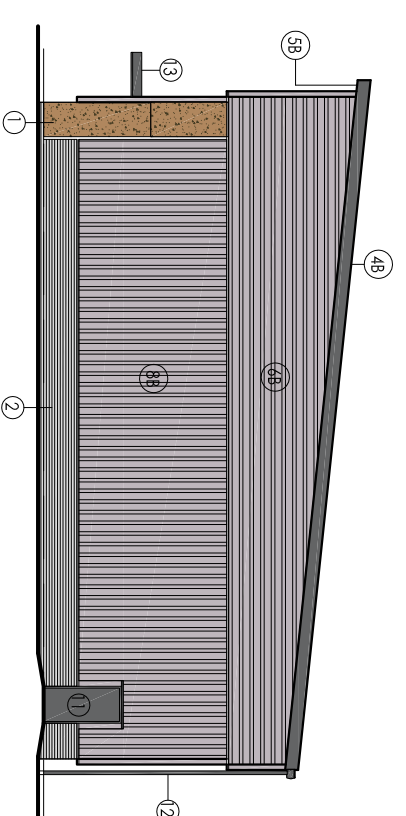
This drawing is subject to Building Regulations Approval.

Materials and Finishes:

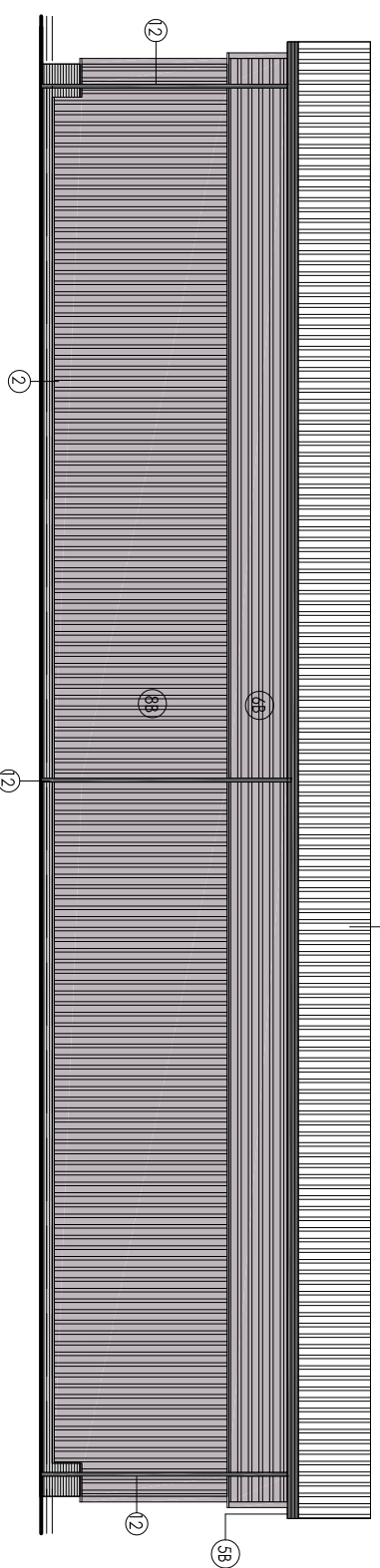
- ① Walls - Trepsa - Hardened Brown M40S
- ② Walls - Brick - Essential Marble Grey, coloured mortar (light Grey)
- ③ Roofs - HF3200 coated steel - Tors Steel, Homtel
- ④ Facades - HF3200 coated steel - Tors Steel, Antiroclic
- ⑤ Sills - HF3200 coated steel - Tors Steel, Antiroclic
- ⑥ Walls - High level cladding - HF3200 coated steel - Tors Steel, Pure Grey
- ⑦ Walls - Flat panel cladding HF3200 coated steel - Tors Steel, Pure Grey
- ⑧ Walls - Flat panel cladding HF3200 coated steel - Tors Steel, Homtel
- ⑨ Walls - Steel Cladding HF3200 coated steel - Tors Steel, Pure Grey
- ⑩ Loading Door - HF3200 coated steel - Tors Steel, Antiroclic
- ⑪ Windows/Doors - Polyester coated aluminum frames - Rd 7012 (Dark Grey) and Glazing - Crystal blue
- ⑫ Fire Exit Doors - Glass pointed steel - Rd 7012 (Dark Grey)
- ⑬ Rain Water Pipes - Rd 7012 (Dark Grey)
- ⑭ Canopy - Glass with Rd 7012 structure (Dark Grey)



NORTH WEST.



NORTH EAST.



SOUTH EAST.

