



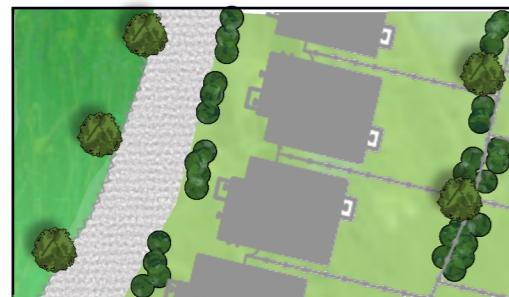
**Central Park**  
Open grassland of undulating mounds and small copses provides excellent opportunity for leisure, play & biodiversity. Species include *Betula nigra*, *Salix* spp and *Populus tremula* along with flowering herbaceous layer and understorey bulbs



**Swale**  
Temporary wetland area as part of an integrated SUDS scheme with attractive and appropriate planting, biodiversity hotspot and wildlife corridor

**Landscape Basin**  
To mitigate for a 1 in 100 year flooding event as part of an integrated SUDS plan and visually interesting

**Close up Plot Detail**



Attractive ornamental shrubs and herbaceous planting with trees in the rear gardens suitable to site conditions and appropriate size at maturity.



**Natural Play Ground**  
Trees, undulating landform, boulders and shrubs used to create a 'wild' playspace for children to explore



**Community Orchard**  
An edible landscape and community focus with excellent biodiversity credentials



**Drainage Ditch with Wetland Planting**  
A key part of the blue/green infrastructure and integrated SUDS scheme. Excellent as a habitat and wildlife corridor


**Street Trees**  
Attractive and site appropriate

**Buffer Hedge**  
Using native species to create a noise and visual barrier to the railway line and great habitat for nesting birds, small mammals and invertebrates



**Flowering Meadows**  
Beautiful spring to autumn planting and excellent benefit to wildlife. Low maintenance requiring a summer 'hay' cut.  
20% native wildflowers  
80% Slow growing grass



 ENVIRONMENTAL CONSULTANTS		Brook Holt Blackburn Road Sheffield S61 2DW Tel. (0114) 2669292 www.ecusltd.co.uk	
Job <b>Thurnscoe Phase 3</b>			
Title <b>Landscape Strategy Diagram</b>			
Drawn by <b>SH</b>	Date <b>28/06/19</b>	Scale <b>1:1500 @A3</b>	Drg. no. <b>13433/LD/01</b>