

KEY

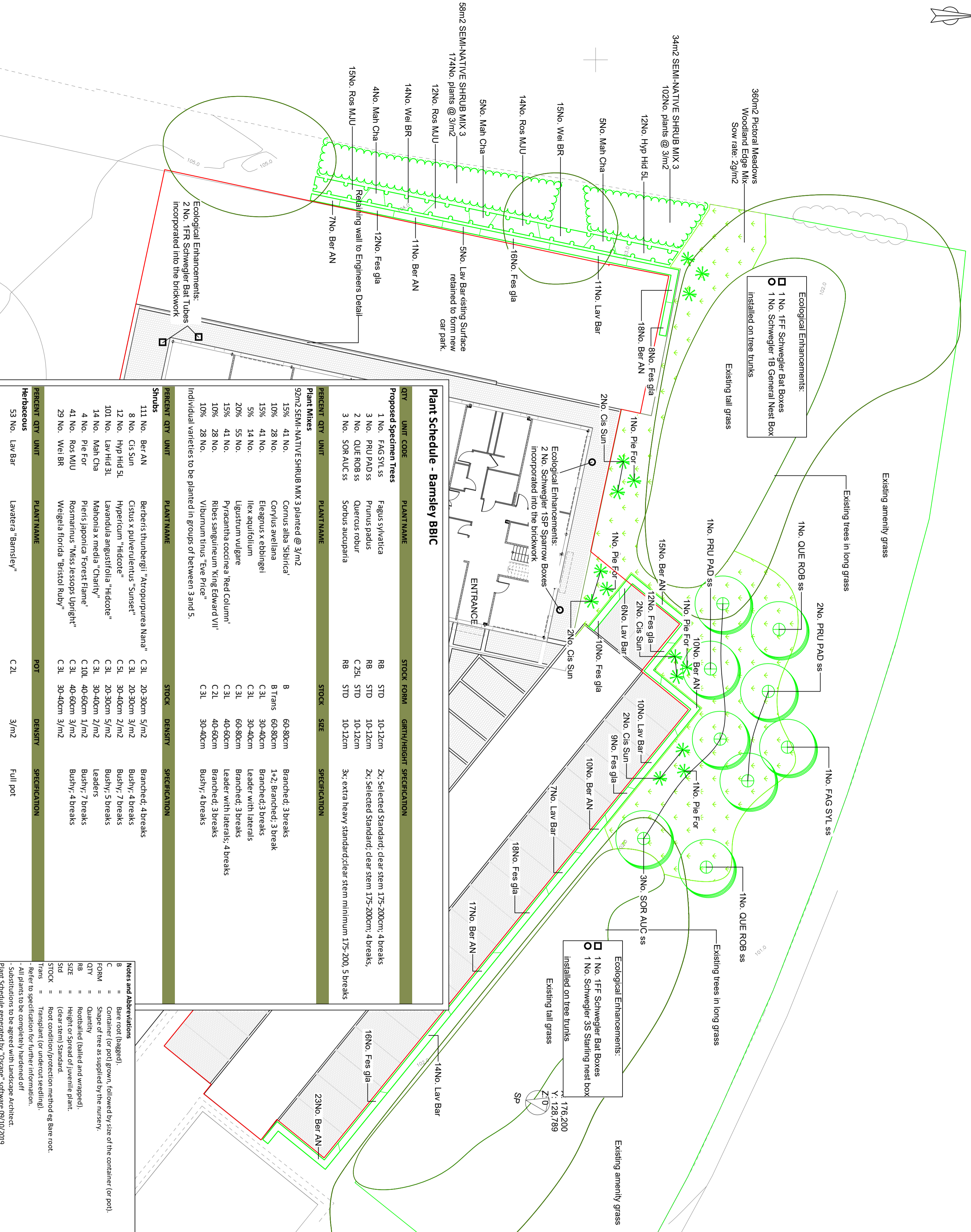
Soft Works

- Ornamental shrub planting
- Semi-native shrub mix
- Groundcover planting
- Specimen shrub
- Tree-Select Standard
- Proposed wildflower meadow e.g. Pictorial Meadows Woodland Edge Mix
- Tree-Existing

Ecological enhancements

- 4 No. Schwegler bird boxes (or similar approved)
- 4 No. Schwegler bat boxes or tubes, as shown (or similar approved)

Bat and bird boxes within the trees can be spaced evenly apart, as long as they are on a tree which is sufficiently mature to have the box around 3-4m high on the main stem and not cluttered by branches and leaves.



Plant Schedule - Barnsley BBC

QTY	UNIT	CODE	PLANT NAME	STOCK FORM	GIRTH/HEIGHT	SPECIFICATION
Proposed Specimen Trees						
1 No.	FRG SYL ss	RB	Fagus sylvatica	STD	10-12cm	2x: Selected Standard; clear stem 175-200cm; 4 breaks
3 No.	PRU PAD ss	RB	Prunus padus	STD	10-12cm	2x: Selected Standard; clear stem 175-200cm; 4 breaks,
2 No.	QUE ROB ss	C25L	Quercus robur	STD	10-12cm	
3 No.	SOR AUC ss	RB	Sorbus aucuparia	STD	10-12cm	3x: extra heavy standard; clear stem minimum 175-200; 5 breaks

PERCENT QTY	UNIT	PLANT NAME	STOCK	SIZE	SPECIFICATION
Plant Mixes					
92m2 SEMI-NATIVE SHRUB MIX 3 planted @ 3/m2					
15%	41 No.	Cornus alba 'Sibirica'	B	60-80cm	Branched; 3 breaks
10%	28 No.	Corylus avellana	B Trans	60-80cm	1+2; Branched; 3 break
15%	41 No.	Eleagnus x ebbingei	C3L	30-40cm	Branched; 3 breaks
5%	14 No.	Ilex aquifolium	C3L	30-40cm	Leader with laterals
20%	55 No.	Ligustrum vulgare	C3L	60-80cm	Branched; 3 breaks
15%	41 No.	Pyracantha coccinea 'Red Column'	C3L	40-60cm	Leader with laterals; 4 breaks
10%	28 No.	Ribes sanguineum 'King Edward VII'	C2L	40-60cm	Branched; 3 breaks
10%	28 No.	Viburnum tinus 'Eve Price'	C3L	30-40cm	Bushy; 4 breaks

PERCENT QTY	UNIT	PLANT NAME	STOCK	DENSITY	SPECIFICATION
Shrubs					
111m2 SEMI-NATIVE SHRUB MIX 3 planted @ 3/m2					
111 No.	Ber AN	Berberis thunbergii "Atropurpurea Nana"	C3L	20-30cm	5/m2 Branched; 4 breaks
8 No.	Cis Sun	Cistus x pulverulentus "Sunset"	C3L	20-30cm	3/m2 Bushy; 4 breaks
12 No.	Hyp Hid 5L	Hypericum "Hidcote"	C5L	30-40cm	2/m2 Bushy; 7 breaks
101 No.	Lav Hid 3L	Lavandula angustifolia "Hidcote"	C3L	20-30cm	5/m2 Bushy; 5 breaks
14 No.	Mah Cha	Mahonia x media "Charity"	C3L	30-40cm	2/m2 Leaders
4 No.	Pie For	Pieris japonica 'Forest Flame'	C10L	40-60cm	1/m2 Bushy; 7 breaks
41 No.	Ros MUJ	Rosmarinus "Miss Jessops Upright"	C3L	40-60cm	3/m2 Bushy; 4 breaks
29 No.	Wei BR	Weigela florida "Bristol Ruby"	C3L	30-40cm	3/m2 Bushy; 4 breaks
Herbaceous					
53 No.	Lav Bar	Lavatera "Barnsley"	C2L	3/m2	Full pot

Notes and Abbreviations

- B = Bare root (bagged).
- C = Container (or pot) grown, followed by size of the container (or pot).
- FORM = Shape of tree as supplied by the nursery.
- QTY = Quantity
- RB = Rootballed (balled and wrapped).
- SIZE = Height or Spread of juvenile plant.
- Std = (clear stem) Standard.
- STOCK = Root condition/protection method eg Bare root.
- Trans = Transplant (or undercut seeding).
- Ref = Refer to specification for further information.
- All plants to be completely hardened off
- Substitutions to be agreed with Landscape Architect.

Plant Schedule generated by "Oscape" software 09/10/2019

CLIENT:
EDGE PS Limited

PROJECT:
Barnsley Business and Innovation Centre

DRAWING TITLE:
Soft Landscape Details

PROJECT NO.: SHF-1777.001

DRAWING NO.: L.D.001

DATE: Oct 2019

SCALE: 1:200

DRAWN: VM

CHECKED: GB

DRAWING STATUS: For Planning

ISSUE: PLO1

PL01 17/10/19 For Planning VM GB

N/A 10/10/19 For Comment VM GB

REV. DATE: NOTES: DR. CK:

Samuel House, 6 Fox Valley Way, Stockbridge, Sheffield, S88 2AA