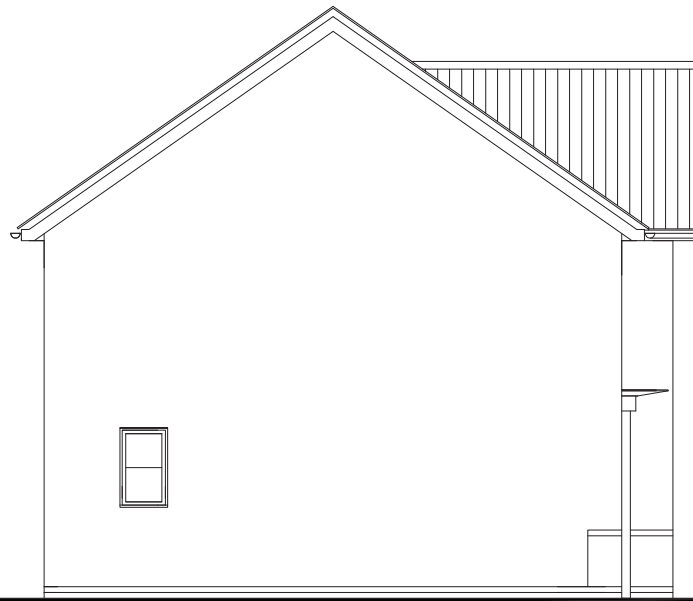




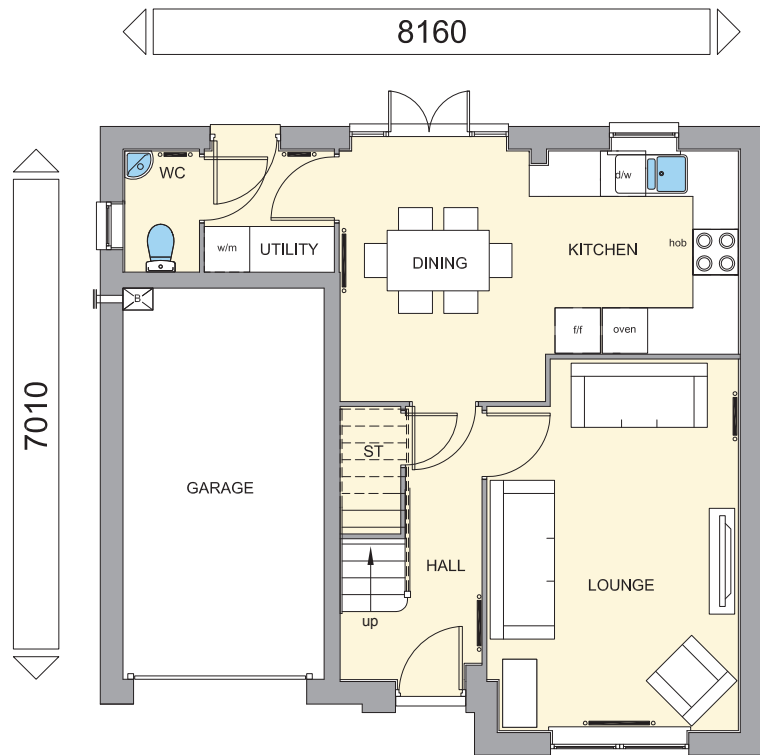
**FRONT ELEVATION**



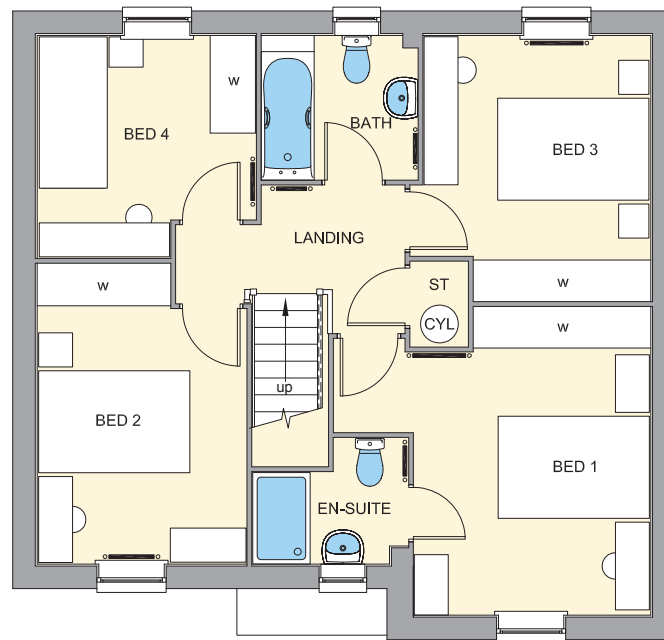
**SIDE ELEVATION**



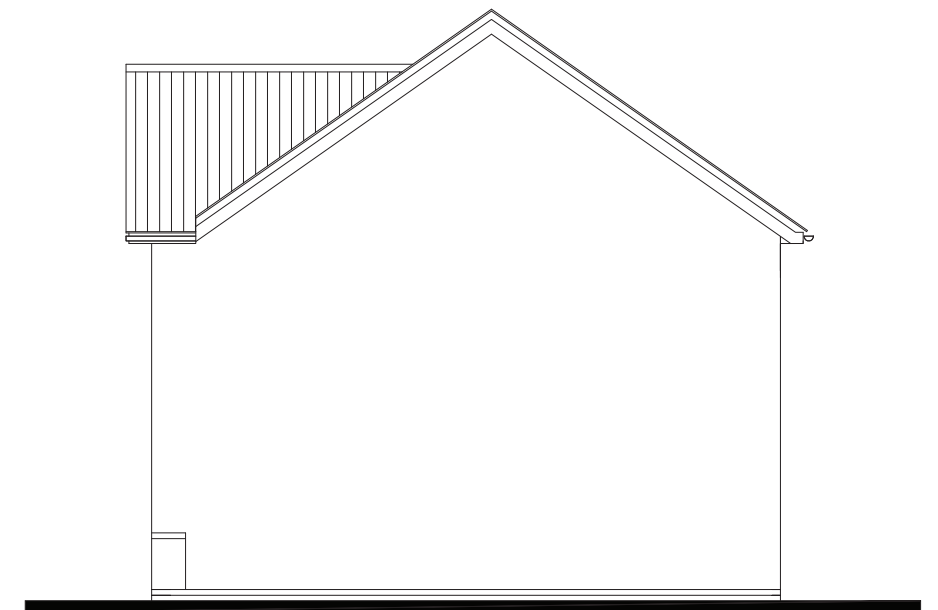
**REAR ELEVATION**



**GROUND FLOOR PLAN**



**FIRST FLOOR PLAN**



**SIDE ELEVATION**

**EMBASSY RANGE  
FLOOR AREA - 1121sqft/104.2m<sup>2</sup>**

**BARRATT**  
DEVELOPMENTS PLC

Group Design & Technical Department

House Type Code
<b>BRIP 00CD</b>

**2016 Range - Ripon**

**WARNING TO HOUSE-PURCHASERS.**  
Buyers are warned that this is a working drawing and the contents of this drawing may be subject to change during the progress of the build process. The layout, form, content and dimensions specified are included for general guidance only. The finishes or features shown may alter in respect of individual properties. Whilst we make every effort to ensure our drawings are up to date there may from time to time be an unavoidable delay in updating these due to changes in regulations and/or re-planning. Purchasers are advised to check with the Sales Adviser whether any alterations have been made to this drawing. The contents of this drawing do not constitute a contract, part of any contract or warranty unless specifically incorporated into the contract. They should not be relied upon for the purposes of entering into a contract to purchase any property.

<b>PLANNING DRAWING</b>			
Date	MAR 2016		
Drawn by	GDT		
Checked by	GDT		
Revision	-	Scale	1 : 100 @ A3