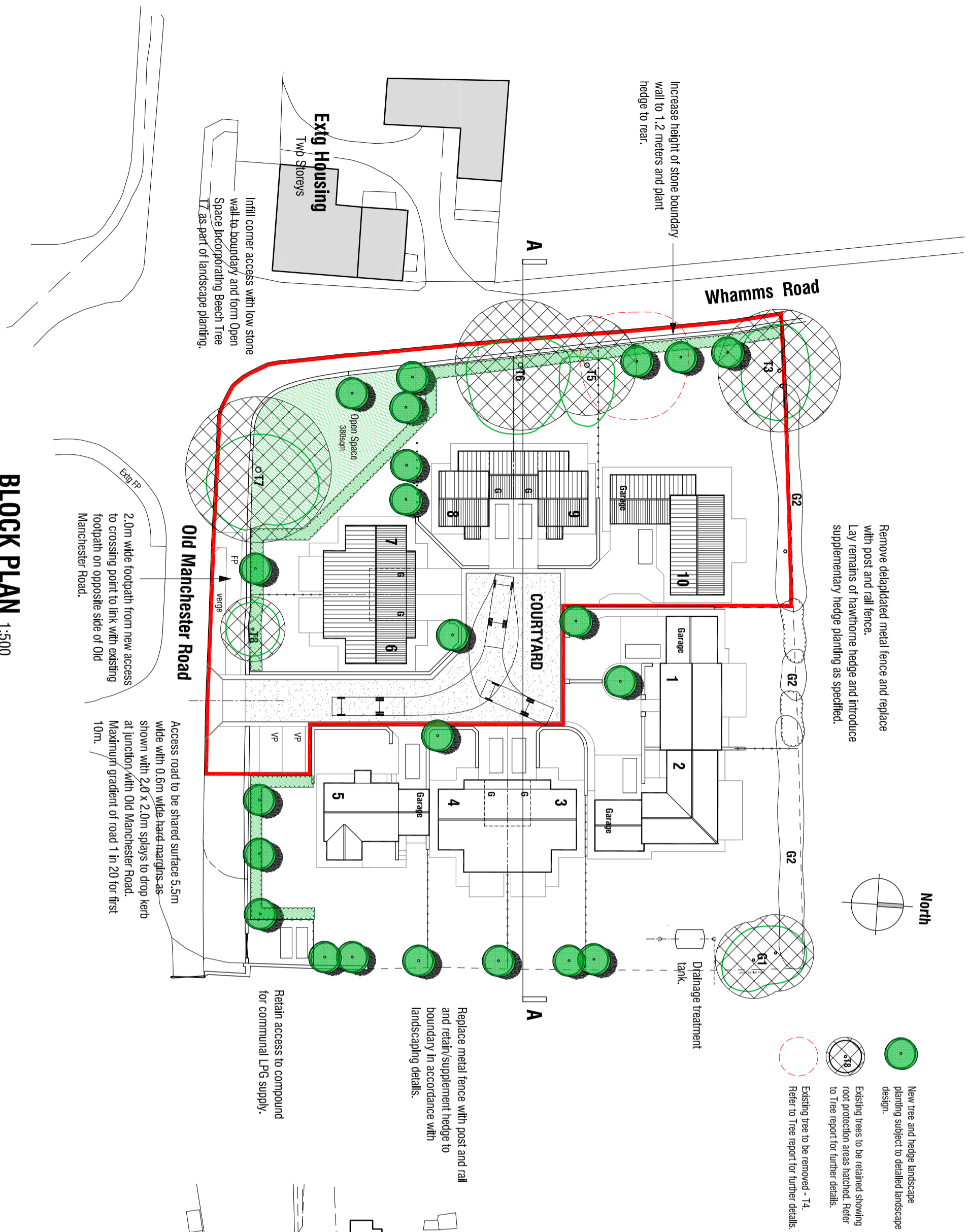
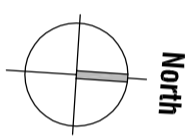


SECTION AA 1:200



BLOCK PLAN 1:500

Remove deplated metal fence and replace with post and rail fence.
Lay remains of hawthorn hedge and introduce supplementary hedge planting as specified.



- New tree and hedge landscape planting subject to detailed landscape design.
- Existing trees to be retained showing root protection areas hatched. Refer to Tree report for further details.
- Existing tree to be removed - 'T4'. Refer to Tree report for further details.

Increase height of stone boundary wall to 1.2 meters and plant hedge to rear.

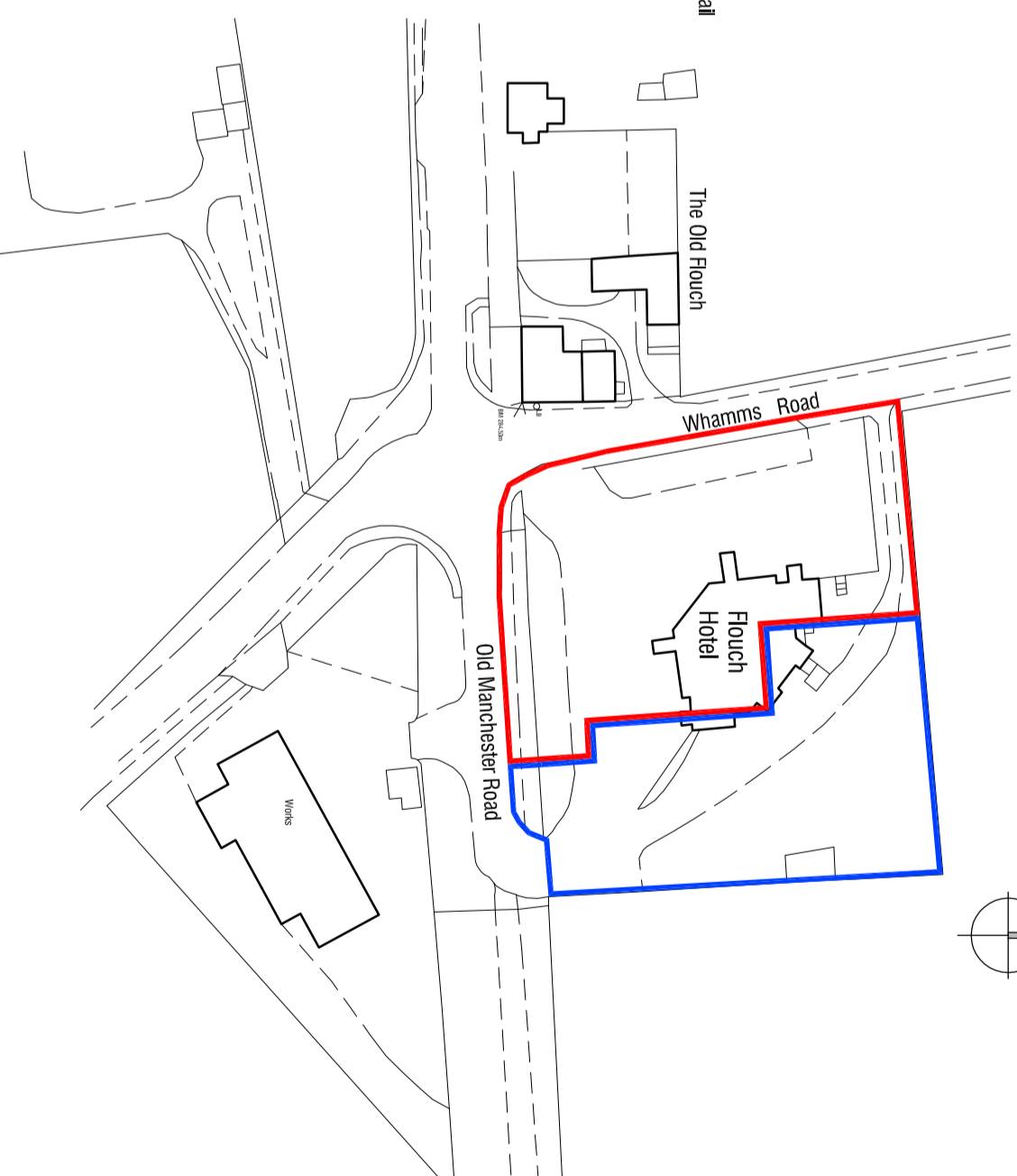
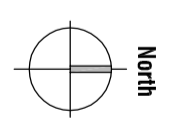
Infill corner access with low stone wall to boundary and form Open Space Incorporating Beech Tree T7 as part of landscape planting.

2.0m wide footpath from new access to crossing point to link with existing footpath on opposite side of Old Manchester Road.

Access road to be shared surface 5.5m wide with 0.6m wide hard margins as shown with 2.0 x 2.0m splay to drop kerb at junction with Old Manchester Road. Maximum gradient of road T in 20 for first 10m.

Retain access to compound for communal LPG supply.

Replace metal fence with post and rail and retain/supplement hedge to boundary in accordance with landscaping details.



SITE LOCATION PLAN 1:1250

Rev A 28.09.2017 - Add section.

RESIDENTIAL DEVELOPMENT
THE FLOUCH INN
WHAMMS ROAD
HAZELHEAD
SHEFFIELD

PROPOSALS

SITE PLAN & SECTION

architectural design and building consultants
 mboothdesign

Fairfield House
 Barnsley Close
 Barnsley, S75 2LU
 T: 01226 286256
 M: 07881 898300
 E: mboothdesign@btconnect.com

Scale 1:500 & 1:200 Drawn MJB
 Date SEPT 2017 Ref. 11.17
 Dwg No. P10 Rev. A

0cm 2cm 4cm 6cm

Copyright mboothdesign. All dimensions in millimeters unless otherwise stated. Dimensions for setting out in existing buildings are to be checked and verified on site.