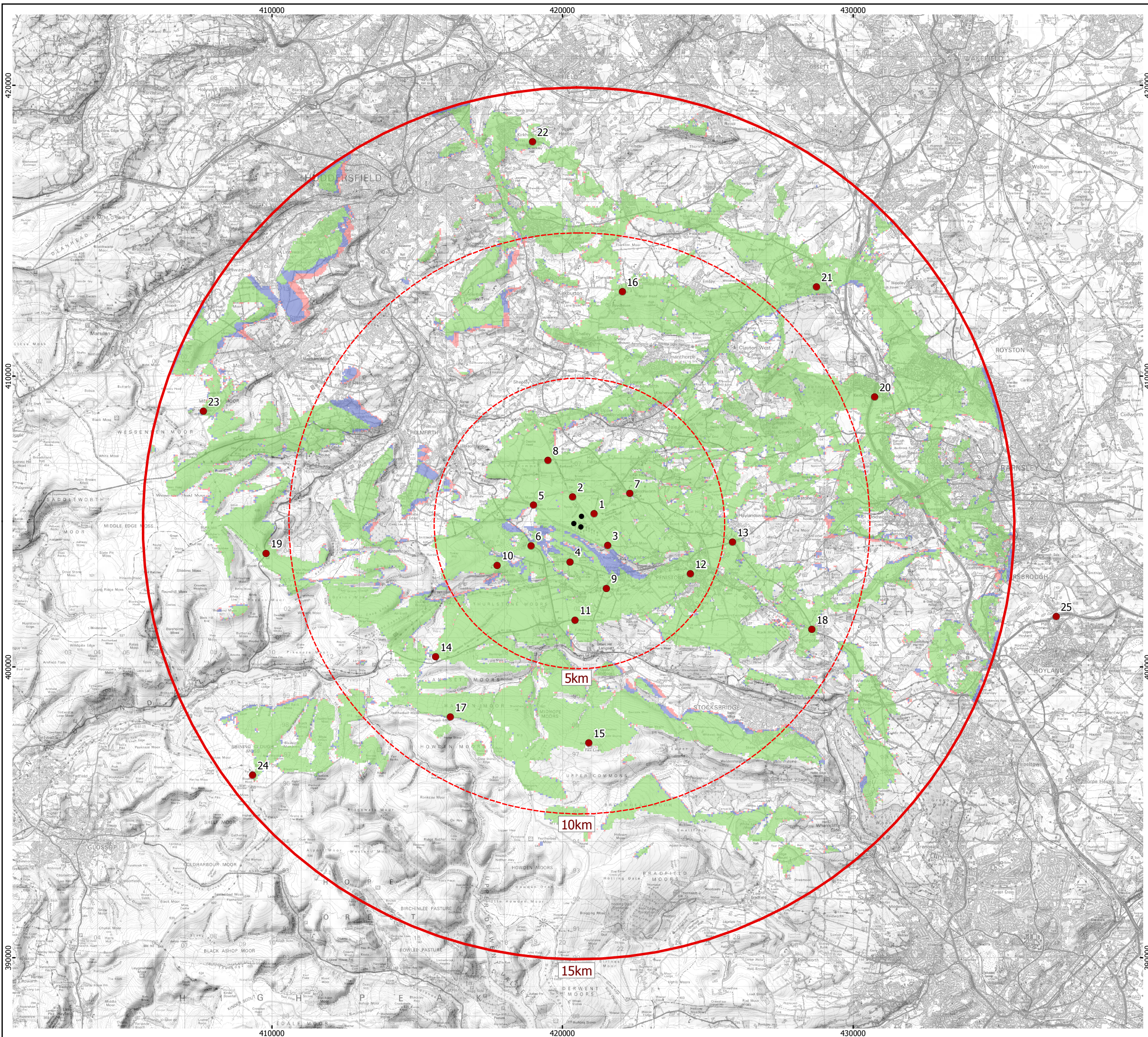
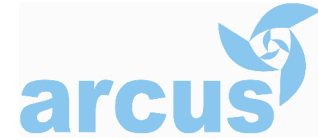


Reproduced from Ordnance Survey digital map data © Crown copyright 2009. All rights reserved. License number 100048606



# J G PEARS LTD



### Key

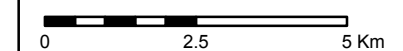
- Proposed Turbine Location
- Viewpoint

### Zone of Theoretical Visibility

- 1 Turbine Visible
- 2 Turbines Visible
- 3 Turbines Visible

The Turbine Blade Tip for the Proposed Turbine will be 95m AGL.

1:125,000 Scale @ A3



Produced By: SC  
Approved By: CS

Ref: 190/ES/023

Revision: B

Date: 19/03/2009

## Tip Height ZTV Figure 5.3

## Spicer Hill Wind Farm Environmental Statement