

The Garganey Trust

**Wings Across the Ings (WATI), Wombwell, South
Yorkshire**

Archaeology and Heritage Statement

A1010

July 2018

Prepared by Kirsten Holland, MCIfA

kharchaeology@gmail.com

Wings Across the Ings, Wombwell, South Yorkshire
Archaeology and Heritage Statement

Contents

1.0	Introduction.....	1
2.0	Site Description.....	1
3.0	Description of Development.....	1
4.0	Archaeological Assessments and Investigations.....	2
4.1	Heritage Assessment, FAS Heritage, Feb 2018	2
4.2	Geophysical Survey, Magnitude Surveys, Nov, 2017.....	3
4.3	Evaluation Excavations, ASWYAS, June 2018	4
5.0	Assessment of Significance.....	5
5.1	Methodology	5
5.2	Heritage Assets and Archaeological Potential.....	6
6.0	Impact Assessment	7
6.1	Designated Assets.....	7
6.2	WATI Site	7
6.3	Doveside Site	8
7.0	Recommendations.....	8
8.0	References	8
9.0	Document Details	9

Appendix A – Figures

Appendix B – Heritage Assessment (FAS Heritage, Feb 2018)

Appendix C – Geophysical Survey (Magnitude Surveys, Nov 2018)

Appendix D – Evaluation Excavations (ASWYAS, June 2018)

Appendix E – Written Scheme of Investigation for Archaeological Mitigation

Wings Across the Ings, Wombwell, South Yorkshire Archaeology and Heritage Statement

1.0 Introduction

This Archaeology and Heritage Statement has been prepared on behalf of The Garganey Trust to accompany a full planning application for the Wings Across The Ings (WATI) project at Wombwell, South Yorkshire (Planning Application Ref 2017/1264). This Statement has been prepared by Kirsten Holland, MCI(A). Illustrations were produced by Alex Craven, JBA Consulting.

Specific objectives of this Statement in relation to this development site are to:

- Summarise the results of archaeological assessments and investigations undertaken within the development site;
- To identify the potential for sub-surface archaeological remains to be present within the development site and their archaeological significance;
- To identify whether the proposed development will affect the significance of any identified archaeological remains; and
- To formulate a strategy of further archaeological investigation to mitigate effects on archaeological remains in a manner proportionate to their significance.

2.0 Site Description

There are two development sites which form part of the planning application: Wings Across the Ings and Doveside.

The Wings Across the Ings (WATI) development site is located approximately 1.25km east of Wombwell, South Yorkshire. The site is centred on grid reference SE 414 033 (441460 403340) and extends to 18.5 hectares. The site is located between 22m and 28m above Ordnance Datum and rises slightly in the centre of the area. It lies to the north of Everill Gate Lane, south of the Bulling Dyke and parallel to Ings Lane, a bridleway. There is no public access to the main site; farm access is via a track running from Everill Gate Lane to the south. A small proportion of the site, lies north of Bulling Dyke, and this is accessible via a bridleway.

The site is currently open farmland. The larger western field is under arable cultivation and the smaller, eastern field is under rough pasture. To the north are areas of open water within Wombwell Ings nature reserve fed by a series of ditches, whilst a similar area to the south, Broomhill Flash, is managed as a nature reserve by the Garganey Trust. The underlying geology comprises mudstone, siltstone and sandstone of the Pennine Middle Coal Measures formation. The majority of the site lies on a sand and gravel island surrounded by alluvial deposits. Alluvium is recorded extending across the north-eastern edge of the site into the eastern corner.

The Doveside development site is located south of Darfield. The site is centred on grid reference SE 412 039 (441200 403900) and extends to 4.54 hectares. The site is located at approximately 22m above Ordnance Datum. The site lies to the immediate south of a modern residential development and north of the River Dove. It is occupied by a central lake, surrounded by open grassland with some wooded areas and hedgerows.

3.0 Description of Development

The WATI scheme is intended to create new habitats to connect, expand and increase populations of wetland and farmland wildlife, especially nationally declining and priority species of water birds such as lapwing, snipe and redshank. A change in farming practices with the aim of supporting nature conservation will also represent a significant improvement in biodiversity. Flood risk will be reduced by the creation of new flood storage, the partial re-routing of Bulling Dike through the site and the creation of new flood defences which will reduce flood risk for an adjacent caravan site, as well as businesses and residents further downstream.

The proposal involves:

- Creation of a new wetland to the right bank of Bulling Dike, with reed bed and wet grassland habitats, to be fed by two sources of water;

Wings Across the Ings, Wombwell, South Yorkshire Archaeology and Heritage Statement

- Creation of new wet grassland areas in the east of the site, with a network of scrapes: shallow depressions which seasonally hold water. The wet grassland will be fed by overflow from Broomhill Flash to avoid a water deficit through the summer months;
- Construction of control structures and a culvert to direct water to where it is needed to maintain habitat areas;
- Creation of a bund to prevent flooding from Bulling Dike into surrounding areas;
- Sowing of native meadow seed mixes to reprofiled areas to create more ecologically valuable grassland habitats. Creation of reptile refugia and otter holts;
- Letting of part of the site to a tenant farmer with changes in farming practices to benefit farmland bird species; and
- Diversion of an existing section of Bulling Dike, with the redundant section retained as wetland habitat for floodplain connectivity and flood storage.

Development plans and scheme drawings are included with the planning application. An outline plan of the proposed development layout, overlain with the results of archaeological investigations is included in Appendix A.

The Doveside scheme involves:

- Removal of silted material from an existing scrape;
- Creation of new wetland and wet meadow areas by raising water levels on the site;
- Construction of small drop-board weir structure within the existing outfall ditch to raise water levels on site; and
- Construction of bunds and drains to the western and eastern boundaries to ensure water levels outside the site are not raised.

Development plans and scheme drawings are included with the planning application.

4.0 Archaeological Assessments and Investigations

The Archaeological and Heritage desk-based assessment completed in 2017 considered both the WATI and Doveside schemes. As a result of discussions with South Yorkshire Archaeology Service (SYAS) the original design at Doveside was amended to remove the scrapes with the potential to affect previously unrecorded archaeological remains. One scrape forms part of the scheme, however, this is an existing scrape, cut in the 1990s when the two ponds on site were dug. The scrape has subsequently infilled with material and vegetation. The plan for this scrape, is to remove the material that has accumulated within this scrape since the 1990s and will not cut into the underlying deposits. As a result of this it was agreed with SYAS that further archaeological investigation at the Doveside site was not required. The following sections focus on the investigations and significance of remains at the WATI site.

4.1 Heritage Assessment, FAS Heritage, Feb 2018

An Archaeological and Heritage Desk-Based Assessment was produced by FAS Heritage in October 2017. It was subsequently updated in February 2018 to account for proposed changes at the Doveside site. The Assessment considered background data and information for a 1km buffer study area, from the South Yorkshire Historic Environment Record (HER), Historic England archive, historic mapping, aerial photographs, geological mapping, LiDAR data and secondary published sources. A copy of the Assessment is included in Appendix B and is therefore only summarised here.

No known heritage assets pre-dating the Iron Age period were identified within the study area. Several cropmarks of potential Iron Age to Romano-British date were identified within the study area. Two of these sites are located to the east of the site and one was located within the site. An aerial photograph held by the South Yorkshire HER and further aerial photographs from Historic England were used to plot the cropmarks across the WATI site. The cropmarks described an enclosure and connected rectilinear features (see Figure 3, Appendix B). These cropmarks were assigned a probable Iron Age to Roman date based on their morphology and similarities to other excavated examples in the region. Further evidence for Roman activity in the study area is suggested by a 17th century account of a coin hoard at Darfield which has been assumed to be Roman in date.

Wings Across the Ings, Wombwell, South Yorkshire Archaeology and Heritage Statement

Assets of early medieval date include fragments of 8th and 9th century sculpture at All Saints' Church in Darfield to the north of the site, that were reused in the walls of the medieval church. The socket for a medieval standing cross is also located in the churchyard. Wombwell Old Hall to the south-west of the study area was the medieval manorial seat of the Wombwell family; it was subsequently converted into multiple residences prior to demolition. LiDAR data revealed the presence of ridge and furrow earthworks of medieval or more probably post-medieval date, which have been truncated by the later creation of wetland habitats, in the south of the study area.

During the post-medieval period the area surrounding Wombwell Ings became increasingly industrial in character as the exploitation of coal resources resulted in the establishment of numerous collieries from the 18th century onwards. Historic mapping indicates that the development site remained undeveloped from the mid-19th century onwards. The site was depicted as sub-divided into six linear fields on a broadly north-east to south-west alignment until the Ordnance Survey map of 1938 when the site was depicted as two fields in the same arrangement as the present time.

The Assessment identified the potential for the proposed scheme to affect buried archaeological deposits associated with the cropmarks of potential Iron Age or Roman date within the site. As the full extent and significance of these cropmarks could not be determined from the desk-based assessment a programme of geophysical survey was recommended to provide further information.

4.2 Geophysical Survey, Magnitude Surveys, Nov, 2017

A fluxgate gradiometer (magnetic) survey was undertaken by Magnitude Surveys in November 2017. The survey was conducted in line with the current best practice guidelines produced by Historic England (David *et al.*, 2008), the Chartered Institute for Archaeologists (CifA, 2014a) and the European Archaeological Council (Schmidt *et al.*, 2015). A copy of the survey report is included in Appendix C and is therefore only summarised here.

The geophysical survey comprised a hand-pulled, cart-mounted fluxgate gradiometer survey across 18 hectares covering the majority of the site. The data was subsequently subject to processing and interpretation, including comparison with historic mapping, LiDAR data and aerial imagery as outlined in the survey report.

Numerous anomalous responses were identified against the magnetic background indicating the technique responded well to the environment of the survey area. Modern interference was generally limited to the perimeter of the site, produced by fences, pylons, telegraph poles and other modern features. A discrete area of mixed waste and ferrous debris was detected within the north-eastern area of the site which masked any underlying features which may be present.

A well-defined settlement area was detected by the survey, extending across the site. This was characterised by enclosures and field boundaries built off a central ditch feature that acts a spine to the complex. The complex ran along a ridge orientated approximately northwest to southeast through the site and centred on the slightly higher ground of a glaciofluvial sand and gravel island. Anomalies with the strongest enhancement were associated with the enclosures and field boundaries attached to the north-western and south-eastern end of the central ditch which may be indicative of more intensive anthropogenic use of the area. Five anomalies indicative of intense in-situ burning were interpreted as potential kilns in the south-east and south-west areas of the site.

Ridge and furrow ploughing was also detected throughout the site. The alignment of the ridge and furrow run roughly parallel to the subdivision field boundaries depicted on historic OS maps indicating the ridge and furrow may be post-medieval in origin. A weak linear anomaly correlated with the location of a former field boundary depicted on historic maps.

Several of the potential archaeological anomalies corresponded well with the cropmarks identified during the desk-based assessment, but the geophysical survey also identified new enclosures, field boundaries, and discrete features enhancing the identification of the cropmarks (see Figure 5, Appendix C).

4.3 Evaluation Excavations, ASWYAS, June 2018

A programme of evaluation excavation was undertaken by Archaeological Services, WYAS in March 2018, reported in June 2018. The evaluation was undertaken in accordance with a Written Scheme of Investigation prepared by FAS Heritage and agreed with South Yorkshire Archaeology Services and Standards and Guidance issued by the Chartered Institute for Archaeologists (CIfA, 2014b). A copy of the evaluation report is included in Appendix D and is therefore only summarised here.

Sixteen evaluation trenches, totalling 2% of the site, were positioned to investigate areas of potential archaeological deposits identified from the desk-based assessment and geophysical survey, and also to define the deposit model in areas where the geophysical survey produced negative results. Trenches measured 100m x 4m (Trenches 2, 3, 5, 7, 8, 10 and 11), 75m x 2m (Trenches 12 and 16) or 50m x 2m (Trenches 1, 4, 6, 9, 13, 14, 15).

Across the site, a dark brown or greyish-brown clayey-silt topsoil was generally found at the surface, measuring between 0.10m and 0.35m in depth. The topsoil sealed a thin naturally occurring subsoil, generally consisting of mid-brown silty-sand or silty-clay, although this extended up to 0.50m in depth in several trenches. At the eastern end of Trench 5, the northern end of Trench 12 and throughout Trench 13, a landfill deposit measuring up to 0.75m in depth was recorded. This deposit filled a cut through the subsoil and natural and was overlain by topsoil.

Trenches 4, 5 10-14 and 16 were devoid of archaeological features. Trenches 5, 12 and 13 confirmed that the area of magnetic disturbance identified on the geophysical survey was comprised of an early 20th century landfill deposit. The other results are summarised by trench in the table below.

Trench	Summary
1	The trench contained one furrow, a ditch terminus, and a ditch which appeared to be sealed by an alluvial subsoil deposit and later disturbed by rooting. This feature corresponded with the geophysical anomaly.
2	The trench targeted geophysical anomalies which appeared to form a sub-rectangular enclosure. The features correlated strongly with the geophysics, containing four or five ditches or gullies and two pits.
3	The trench targeted geophysical anomalies which appeared to form a set of several sub-rectangular enclosures. The features correlated strongly with the geophysics, containing eight linear ditches or gullies and three pits.
6	The trench targeted a single large linear geophysical anomaly which correlated with two large intersecting ditches and a furrow crossing the centre of the trench.
7	The trench targeted a single linear geophysical anomaly. It contained five furrows and one ditch which correlated strongly with the results of the geophysical survey.
8	The trench targeted three linear geophysical anomalies, two of which proved negative and one correlated strongly with a ditch. Two furrows and an area of probable rooting or burrowing were observed.
9	The trench contained one ditch which correlated strongly with the results of the geophysical survey. Several furrows were also observed.
10	The trench contained a number of furrows, a kiln and one ditch which correlated strongly with the results of the geophysical survey.
11	The trench targeted a number of geophysical anomalies which appeared to form a set of enclosures and possible trackway or field boundaries. On excavation the trench contained eight ditches or gullies and several furrows.
15	The trench targeted several geophysical anomalies and contained two pits and two gullies.

The archaeological evaluations clarified the results of the geophysical survey and defined the areas that contain archaeological deposits. Although features had been truncated by ploughing in some areas, they were overall well preserved. Generally, the features investigated corresponded well with the geophysical survey anomalies and crop mark data, although additional features indicated that the enclosures are likely to contain internal archaeological features not detected by the geophysical

Wings Across the Ings, Wombwell, South Yorkshire Archaeology and Heritage Statement

survey. The presence of a kiln in Trench 10 confirmed the geophysical survey interpretation of possible kiln structures. The contrast between archaeological features and plough furrows was clear. None of the features investigated had any indication of having been waterlogged.

Several trenches that were targeted upon anomalies failed to identify any archaeological remains, instead identifying modern agricultural land drains or ploughing activity (e.g. Trenches 4, 5, 14 and 16). The area of magnetic disturbance in the north of the site was confirmed to be the result of late 19th and early-20th century landfill.

The majority of archaeological features and deposits investigated were of Romano-British date, containing locally produced mid to late 2nd century pottery and conform to known patterns of brickwork field systems and enclosures that exist in the wider region. The morphology of the identified archaeological remains reinforces the pattern identified during the geophysical survey. There are two clusters of enclosures at the north-western and south-eastern ends of a central ditch which forms a spine to the settlement. These enclosures contain internal features which indicate a more intensive level of occupation, with the greatest density at the north-western complex. Branching from the central ditch are a number of ditches which appear to form field boundaries or land sub-divisions.

There was limited environmental evidence recovered from the site. Cereal grain was present in one gully terminus, contained a mixed deposit of spelt wheat, barley and oat grains, probably waste from a number of cereal drying events. This was located in the enclosures containing the greatest density of archaeological features. The majority of the features contained clinker and coal probably originating from post-medieval industrial activity in the area, particularly within the kiln excavated in Trench 10. This kiln is probably post-medieval in origin with an industrial purpose given the evidence from the collected samples.

5.0 Assessment of Significance

5.1 Methodology

The significance of a heritage asset is defined in the National Planning Policy Framework (2012) as:

The value of a heritage asset to this and future generations because of its heritage interest. That interest may be archaeological, architectural, artistic or historic. Significance derives not only from a heritage asset's physical presence, but also from its setting.

This Statement will assess the significance of heritage assets within the development site. To aid the assessment of significance the following criteria have been developed to allow an assessment of relative significance of assets to be identified. These have been adapted from the published criteria in the Design Manual for Roads and Bridges (DMRB, 2007).

Significance	Examples
Very High	World Heritage Sites and places of international importance due to their 'outstanding universal value'.
High	Scheduled Monuments Grade I or II* Listed Buildings Grade I or II* Registered Parks and Gardens Registered Battlefields Non-designated heritage assets of equivalent national significance or potential to contribute significantly to national research objectives
Medium	Grade II Listed Buildings Grade II Registered Parks and Gardens Conservation Areas Undesignated assets of regional significance with potential to contribute significantly to regional research objectives. This includes assets which have particular regional associations, or may have particularly important associations at a local level.

Wings Across the Ings, Wombwell, South Yorkshire Archaeology and Heritage Statement

Significance	Examples
Low	Locally Listed Buildings Undesignated assets which are relatively poorly preserved, or have limited interest at a local level and low potential to add to regional research objectives.
Negligible	Assets that have very limited or no archaeological, historical or cultural significance, including those with very poor preservation.
Uncertain	Sites where there is evidence that a heritage asset may exist, but where there is insufficient information to determine its nature, extent, survival and significance given current knowledge.

5.2 Heritage Assets and Archaeological Potential

The investigations within the site have identified a complex of Romano-British enclosures and field boundaries or sub-divisions with archaeological interest for their potential to yield evidence about the domestic and economic character of the period. The features identified during the geophysical survey and investigated during the evaluation are consistent with patterns of Iron Age and Romano-British brickwork field systems and enclosures that exist in the wider Yorkshire and East Midlands regions. The two clusters of enclosures at the north-western and south-eastern ends of the central ditch which forms the spine to the settlement contain internal features which indicate a more intensive level of occupation. These occupation areas have greater potential to contribute to regional research objectives as they are the locations where environmental and artefactual evidence is more likely to be present to supplement the evidence that can be obtained from archaeological features. The pottery recovered from the evaluation has a form that suggests it was locally produced and dates to the mid to late 2nd century AD and includes some waste material. It is a significant assemblage, given the limited quantity of pottery recovered from other brickwork enclosures in the region. The archaeological remains of Romano-British activity within the site have the potential to contribute to regional research objectives relating to the rural economy of the period, including agricultural intensification (Roskams and Wyman, 2007) and are therefore considered to be of medium heritage significance.

The ridge and furrow within the site were recorded during geophysical survey and their presence confirmed during the evaluation. No pottery or other artefactual evidence was recorded within the evaluated furrows to provide a secure date, however, based on their alignment with the field boundaries recorded on post-medieval historic mapping and the lack of any medieval pottery recovered during the evaluation a post-medieval date is considered more likely. The ridge and furrow have archaeological interest for their potential to contribute to the understanding of post-medieval agricultural practice, although the significance of the ridge and furrow is considered to be low to negligible as they are a well-documented form of agricultural feature with limited potential to contribute to research objectives, although the documented evidence contributes to the understanding of agricultural changes to previously marginal land in the post-medieval period.

Field boundaries of post-medieval date have been identified within the site from historic mapping and identified within evaluation trenches. The field boundaries have archaeological interest for their potential to contribute to the understanding of post-medieval agricultural practice, although the significance of the boundaries is considered to be negligible as they are already documented on historic mapping and have very limited potential to contribute to research objectives.

The excavated kiln is considered to have a post-medieval date and an industrial function based upon its form and the large quantities of coal and clinker present within the environmental samples. There was no evidence that it had been used for pottery production or was associated with the Romano-British occupation of the site. Further potential kiln features were identified within the geophysical survey. The excavated kiln is considered to have archaeological interest for its potential to add to knowledge about the industrial exploitation of the area during the post-medieval period. It is of interest at a local level and has limited potential to contribute to regional research objectives. The kiln is therefore considered to be of low heritage significance.

Wings Across the Ings, Wombwell, South Yorkshire Archaeology and Heritage Statement

There is potential for further previously unrecorded heritage assets with archaeological interest within the development site. These assets are most likely to be of Romano-British date and associated with the known enclosure and field boundary features, Features associated with the Romano-British period may be of low to medium heritage significance depending on their complexity, with settlement remains more likely to contribute to research objectives and be of medium significance, whilst field boundaries would be of low significance. Further features associated with the post-medieval agricultural uses of the site may also be identified, although these are unlikely to be more than negligible to low significance. Although features of an early prehistoric, early medieval or medieval date cannot be entirely ruled out, the lack of any features or significant artefacts from these periods indicates this is unlikely. The four residual flint artefacts add to the evidence of an early prehistoric presence in the area, although the features excavated during the evaluation are unlikely to be of an early prehistoric date.

Several further potential kilns were identified within the development site during geophysical survey. Whilst these are anticipated to be of post-medieval date as with the evaluated kiln structure, a Romano-British date cannot be ruled out. If the kilns were to be of Romano-British date they may be associated with cereal processing or small-scale pottery production would be likely to contribute to regional research objectives associated with agricultural exploitation and economy or pottery production and trade (Roskams and Wyman, 2007) and be of medium heritage significance.

6.0 Impact Assessment

6.1 Designated Assets

The only designated heritage assets within the study area are the Grade I Church of All Saints Listed Building at Darfield and Grade II Listed obelisk and the Scheduled remains of an early medieval cross base, both located within the churchyard. These assets have a setting of the churchyard and immediate surroundings which is enhanced by their group association. The development site is sufficiently distant from these assets that it makes no contribution to their setting or significance. The scheme will therefore not affect the setting or significance of these designated assets.

6.2 WATI Site

There are three areas of the development which will result in significant earthwork activities with the potential to remove archaeological deposits within their footprint. These are the new reed bed in the central north of the site, the new water channel in the north-west of the site and the spoil bund parallel with the southern boundary of the site. These three areas of large scale earthworks are located across areas of recorded field boundaries of probable Romano-British date and have been designed to avoid the concentrations of archaeological remains associated with the enclosures and potential occupation sites. It is anticipated that within the footprint of these earthworks archaeological remains may be significantly truncated or removed entirely during the construction phase.

The excavation of swales and channels to create wetland habitat is proposed in the north-eastern part of the site. These swales are primarily located within the area of late-19th and early-20th century landfill. The natural deposits underlying the landfill deposits were reached during the evaluation, but no archaeological features were observed. The swales will generally be shallow features within a wet grassland environment and will not penetrate to a depth beyond the landfill deposit. Due to their shallow nature it is unlikely that they would affect any previously unrecorded archaeological remains buried below the landfill deposit.

The two areas of enclosures with internal features indicative of occupation and the other identified kiln features lie outside of the footprint of proposed earthworks and excavations. The layout of the scheme has been redesigned from an earlier iteration to avoid potential impacts on these more significant areas of archaeological remains. This allows these two areas of archaeological activity within the enclosures, along with most of the connecting ditch to be preserved *in situ* and therefore conserves the archaeological interest and heritage significance of the site for the future. As part of the new management regime for the site these areas will be converted from arable cultivation to

Wings Across the Ings, Wombwell, South Yorkshire Archaeology and Heritage Statement

pasture. This will have a beneficial effect on the archaeological interest of these remains as they will be removed from the potentially harmful effects of truncation by regular ploughing.

6.3 Doveside Site

There are no recorded heritage assets within the Doveside site. The extent of proposed earthworks at Doveside is limited to the dredging of a scrape previously excavated in the 1990s to remove accumulated material, the creation of two 1m-1.5m earthwork bunds and the construction of two drains with a width of 1m at the bed and 2.5m at the bank top and a depth of 0.5m to divert existing flows. These excavations are considered to have limited potential to affect previously unrecorded archaeological remains due to their scale and within the area of the scrape will have been previously disturbed by the construction of the existing nature reserve features. No further work is recommended at the Doveside site.

7.0 Recommendations

The proposed development will affect the buried archaeological remains of field boundaries and enclosures of Romano-British date. It may also affect any previously unrecorded archaeological remains not identified through the existing investigations. It is therefore considered appropriate to implement a programme of archaeological investigation to record archaeological remains before they are removed through development.

Impacts will be greatest in the areas of the new water channel, reed bed and spoil bund. It is recommended in these locations that a programme of archaeological strip, map and sample investigation is implemented to identify the extent of archaeological remains that will be affected, excavate and record them to a level proportionate to their significance. Within the proposed swales and channels in the north-east of the site the impact is anticipated to remain within the deposits of the late 19th century and early 20th century landfill. Further archaeological investigation in this area is therefore not proposed. A Written Scheme of Investigation for these works has been prepared and is included in Appendix E.

The archaeological mitigation can be secured through a negative condition on the planning consent and in accordance with the Written Scheme of Investigation. The mitigation should be implemented prior to the main earthworks phase of development.

The applicant is a charitable trust and as part of its charitable objectives it promotes the conservation of heritage and biodiversity and provides opportunities for access, education, demonstration and research. The Trust is keen to explore options for public engagement and dissemination of the results of archaeological investigations once the significance of remains is fully understood. Provision to identify a proportionate and appropriate method of dissemination and engagement has been included in the WSI.

8.0 References

Chartered Institute for Archaeologists (2014a) Standards and guidance for archaeological geophysical survey. CIfA.

Chartered Institute for Archaeologists (2014b) Standards and guidance for archaeological evaluation. CIfA.

David, A., Linford, N., Linford, P. and Martin, L. (2008) Geophysical survey in archaeological field evaluation: research and professional services guidelines (2nd edition). Historic England.

Roskams, S and Wyman, M (2007) Yorkshire Archaeological Research Framework: research agenda. York: University of York.

Wings Across the Ings, Wombwell, South Yorkshire Archaeology and Heritage Statement

Schmidt, A., Linford, P., Linford, N., David, A., Gaffney, C., Sarris, A. and Fassbinder, J. (2015)
Guidelines for the use of geophysics in archaeology: questions to ask and points to consider. EAC
Guidelines 2. European Archaeological Council: Belgium.

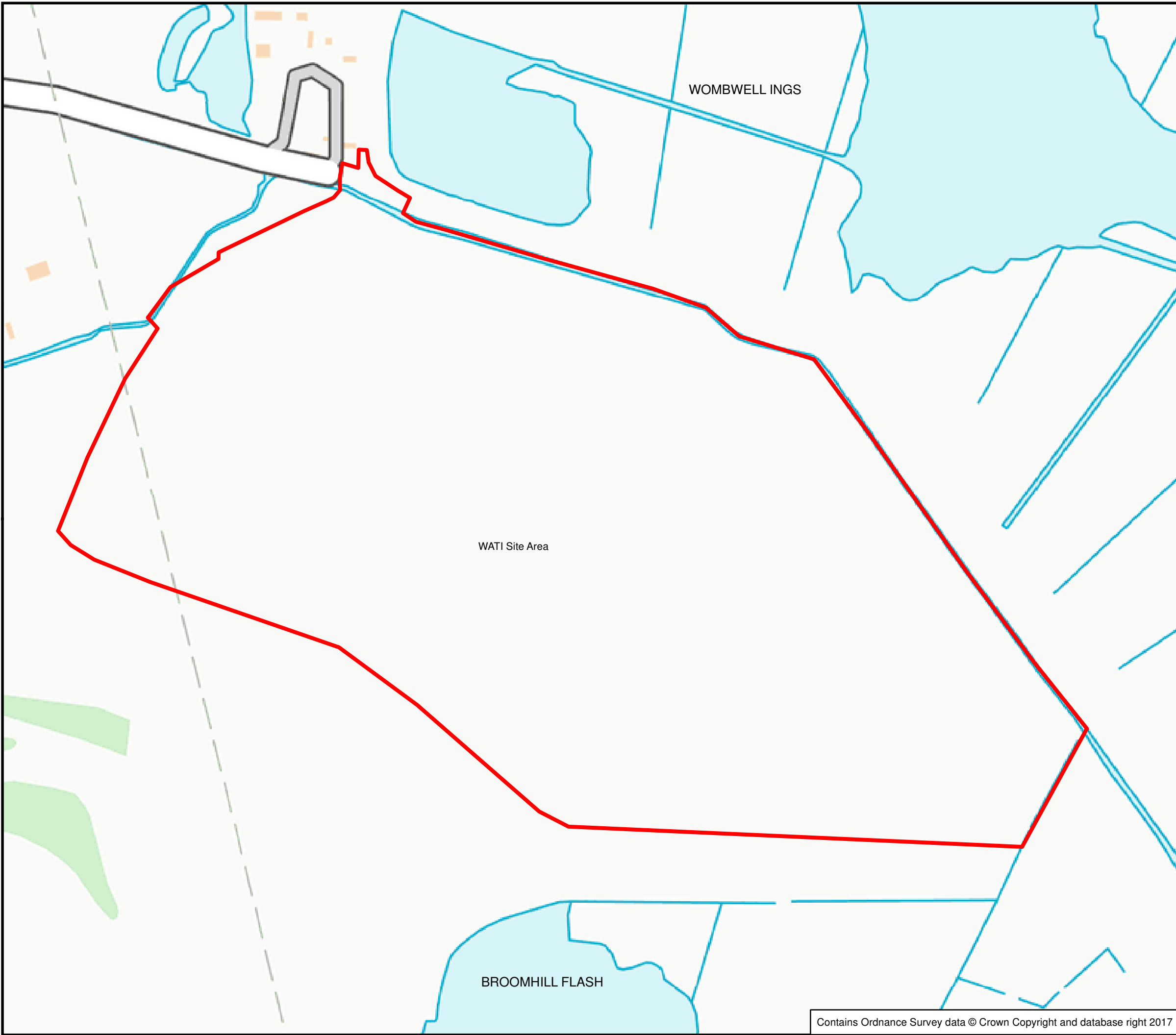
9.0 Document Details

Version	Status	Prepared By	Date	Checked By	Date
0	Internal draft	Kirsten Holland MCIFA	13/07/18	Alex Jones	16/07/18
1	External Issue	Kirsten Holland MCIFA	13/07/18	Chris Moore, MCIFA	16/07/18

This report is produced solely for the benefit of The Garganey Trust and no liability is accepted for any reliance placed on it by any other party. This report is prepared for the proposed uses stated in the report and should not be relied upon for other purposes. In time fresh information or amended legislation may necessitate a re-assessment. Opinions and information provided in this report are based on the author using reasonable skill and care in the preparation of the report.

This report refers, within the limitations stated, to the environment of the site in the context of the surrounding area at the time of preparation. This report is limited to those aspects reported on, within the scope and limits agreed with the client under our appointment. Reliance has been placed on the documents and information supplied to the author by others, no independent verification of these has been made by the author and no warranty is given on them.

Appendix A – Figures



Legend

 Site Area

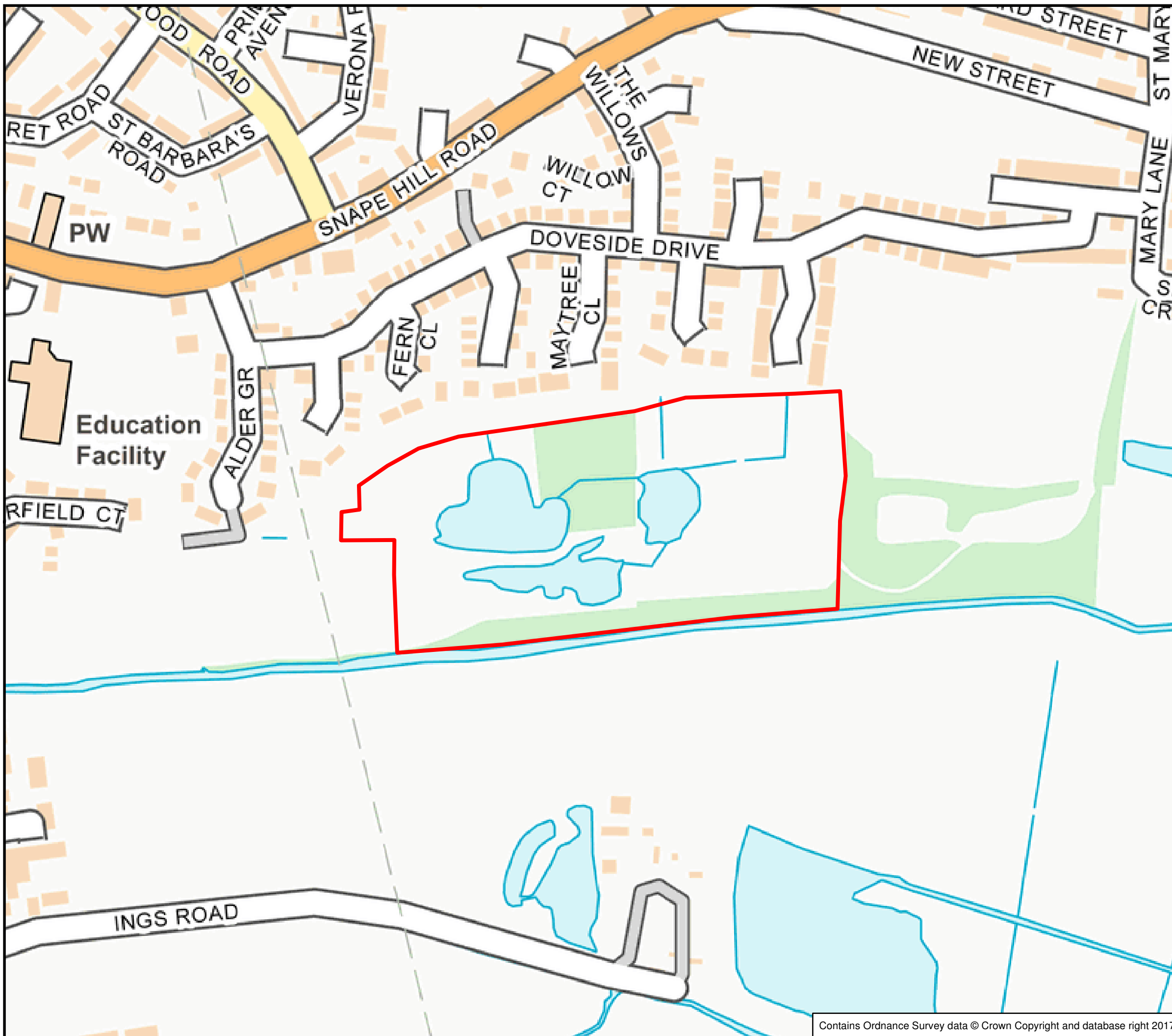


Drg/Figure No.	2016s3858-WT01
Title:	Site Location Plan
Location:	Wombwell Wetlands Extension - Wings Across the Ings (WATI)
Page no.:	1 of 1
Prepared by:	AJ
Approved by:	NA
Date created:	13/10/2017
Version:	v2.0
Draft status:	FOR ISSUE
Scale:	1:2500

JBA Consulting
 Salts Mill, Victoria Road
 Saltaire, Shipley
 BD18 3LF



Tel: (01274) 714269
 Fax: (01274) 714272
 www.jbaconsulting.com



Legend

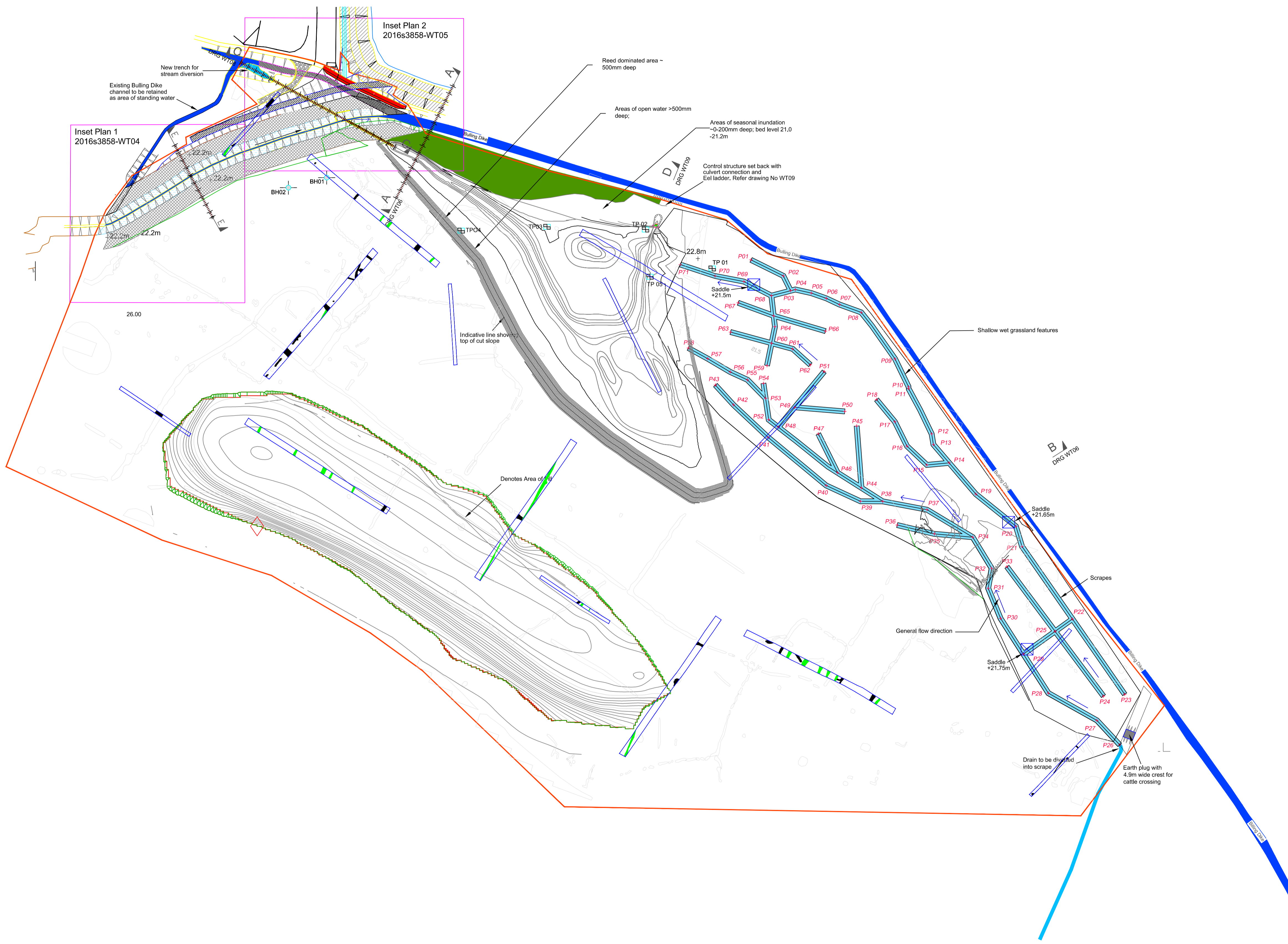
 Site Area



Drg/Figure no.	2016s3858-DS01
Title:	Site Location Plan
Location:	Wombwell Wetlands Extension - Doveside
Page no.:	1 of 1
Prepared by:	AC
Approved by:	NA
Date created:	13/04/17
Version:	v1.0
Draft status:	FOR ISSUE
Scale:	1:2500

JBA Consulting
 Salts Mill, Victoria Road
 Saltaire, Shipley
 BD18 3LF
 Tel: (01274) 714269
 Fax: (01274) 714272
 www.jbaconsulting.com





DRAFT

Purpose of Issue	Draft for archaeological consultation	Status	DRAFT
------------------	---------------------------------------	--------	-------



Salts Mill
Victoria road
Saltaire
SHIPLEY
BD18 3LF

www.jbaconsulting.com
t +44 (0)1274 714269
f +44 (0)845 862772
e info@jbaconsulting.com

Offices at: Coteshill, Doncaster, Edinburgh, Exeter, Glasgow, Haywards Heath, Isle of Man, Leeds, Limerick, Newcastle upon Tyne, Newport, Peterborough, Saltire, Skipton, Tadcaster, Thirsk, Wallingford and Warrington



Project	WOMBWELL WETLANDS - PHASE 2		
Title	GENERAL ARRANGEMENT & ARCHAEOLOGY		
Client	for THE GARGANEY TRUST		

The property of this drawing and design vested in Jeremy Benn Associates Ltd. It shall not be reproduced in whole or in part, nor disclosed to a third party, without the prior written consent of Jeremy Benn Associates Ltd.

Scale	1:1250 @ A1	Drawn: R. MINNIS-JONES	12/07/18
		Designed: A. JONES	12/07/18
		Checked: A. JONES	12/07/18
		Approved: A. JONES	12/07/18

Project Number:	2016s3858	Revision	P01.01
Drawing Number	2016s3858-JBAU-00-00-DR-Z-1004		



- General Notes**
- All dimensions shown are in millimetres unless otherwise stated and levels in metres to Ordnance Datum.
 - Do not scale from this drawing. All dimensions must be checked/verified on site.
 - Any discrepancies noted on site are to be reported to the Engineer immediately.
 - All works in watercourses will be carried out with care to minimise the risk of pollution adhering to Pollution Prevention Guidelines.
 - The locations of any known services shown on drawing are approximate and for guidance only. The Contractor will confirm the location of any services prior to the commencement of any works.
 - The electronic model of this drawing is not to be used for setting out.

Key

- Existing drain
- Proposed drain
- Flow direction
- Sewer outfall
- Areas of seasonal inundations
- Water level 0-200mm
- Water level 200-400mm
- Water level 400mm+
- Proposed Scrape
- Weir
- Bund
- Path
- Observation point

Overhead electricity cable

Proposed access route

Rev	Modifications	Date	Drawn	Designed	Checked	Approved

JBA consulting

Second Avenue
ONCHAN
Isle of Man
IM3 4LT
British Isles

www.jbaconsulting.com
t +44 (0)1624 695100
f +44 (0)1624 620386
e info@jbaconsulting.com

Offices at: Colleshill, Doncaster; Edinburgh; Exeter; Haywards Heath; Limerick; Newcastle upon Tyne; Onchan; Newport; Salford; Skipton; Tadcaster; Thirsk; Wallingford and Warrington

for

The Garganey Trust
Doveside
Wombwell
General Arrangement

This document is the property of Jeremy Benn Associates Ltd. It shall not be reproduced in whole or in part, nor disclosed to a third party, without the permission of Jeremy Benn Associates Ltd.

Scale: 1:1000 @ A1

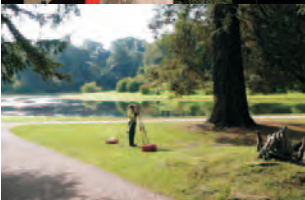
Drawn: Peter Wilkinson 24/10/2017
Designed: Gregory Parkinson 24/10/2017
Checked:
Approved:

Digital File Name: 2016s3858-WT18-General Arrangement

Drawing Number: 2016s3858-WT18

Rev.:
Sheet No.: 1 of 1
Status:

Appendix B – Heritage Assessment (FAS Heritage, Feb 2018)



FAS
HERITAGE

WOMBWELL INGS

SOUTH YORKSHIRE

HERITAGE ASSESSMENT

REPORT
FEBRUARY 2018

HERITAGE ASSESSMENT
WOMBWELL INGS AND DOVESIDE
SOUTH YORKSHIRE

SITE CODE: WBW'17
REPORT CODE: FAS2017 710 WBW692
NGR: SE 414 033 and SE 412 039

REPORT
February 2018
Version 2.0

FAS HERITAGE

Unit 8 Fulford Business Centre
35 Hospital Fields Road
York
YO10 4DZ

Tel (01904) 652000
Fax (01904) 749014
mail@fas-heritage.co.uk
www.fas-heritage.co.uk

ON BEHALF OF

JBA CONSULTING

CLIENT

GARGANEY TRUST

PROJECT TEAM

Nicola Toop BA MA PhD MCIfA

REPORT PREPARED BY

Nicola Toop BA MA PhD MCIfA

REPORT REVIEWED BY

Cecily Spall BSc MA MCIfA

REPORT AUTHORISED BY

Justin Garner-Lahire BA

LIST OF CONTENTS

Summary.....	iii
Acknowledgements.....	iii
1.0 INTRODUCTION.....	1
1.1 LOCATION AND LAND USE	1
1.2 AIMS AND OBJECTIVES	1
1.3 LEGAL FRAMEWORKS AND PLANNING GUIDANCE.....	3
1.3.1 Legal frameworks.....	3
2.0 RESEARCH METHODOLOGY.....	3
2.1 DESK-BASED RESEARCH	3
2.1.1 Sources	3
2.1.2 Gazetteer.....	3
2.1.3 Aerial photographs	4
3.0 ASSESSMENT OF SIGNIFICANCE AND IMPACT	4
3.1.1 Assessment of significance.....	4
3.1.2 Assessment of impact.....	4
4.0 BASELINE CONDITIONS.....	5
4.1 DESIGNATED HERITAGE ASSETS	5
4.1.1 Scheduled Monument	5
4.1.2 Listed Buildings	5
4.2 NON-DESIGNATED HERITAGE ASSETS	5
5.0 ARCHAEOLOGICAL AND HISTORICAL BACKGROUND.....	7
5.1 GEOLOGY	7
5.2 PREHISTORIC TO ROMAN PERIOD	7
5.3 MEDIEVAL PERIOD	9
5.4 POST MEDIEVAL TO MODERN PERIOD	9
5.4.1 Historic map regression.....	9
6.0 ASSESSMENT OF SIGNIFICANCE AND POTENTIAL.....	10
6.1 KNOWN HERITAGE ASSETS	10
6.2 ARCHAEOLOGICAL POTENTIAL.....	11
7.0 ASSESSMENT OF IMPACT.....	11
7.1 DIRECT IMPACT	11
7.2 IMPACT ON SETTING.....	11
8.0 RECOMMENDATIONS.....	11

9.0 REFERENCES 13

Appendices

APPENDIX A	GAZETTEER.....	14
APPENDIX B	EVENTS	15

Plates

Plate 1	Aerial view of the site © 2017 Google Earth.....	1
Plate 2	LiDAR and hillshade data showing the topography of the area.....	1
Plate 3	Extract from OS, 1854	9
Plate 4	Extract from OS, 1893-4	9
Plate 5	Extract from OS, 1938	10
Plate 6	Extract from OS, 1905	10
Plate 7	Extract from OS, 1966-7	10
Plate 8	Doveside, 1979 (MAL79046/ 050).....	10
Plate 9	Doveside, 2002 © Google Earth	10

Figures

Figure 1	Location map and study area	2
Figure 2	Location of heritage assets.....	6
Figure 3	Cropmarks	8

Summary

This document presents the results of a Heritage Assessment (HA) for a proposed wetland creation scheme at Wombwell, South Yorkshire. The HA has been prepared by FAS Heritage on behalf of JBA Consulting for Garganey Trust.

The assessment considers two sites; a larger site to the south of Wombwell Ings, and a smaller site to the north referred to as Doveside. Within the Wombwell boundary, cropmarks of potential Iron Age to Romano-British date were identified from aerial photographs and plotted onto Ordnance Survey mapping. No further known heritage assets were recorded at the site, and historic maps indicate that the site has been open and agricultural in character since at least the mid-19th century.

At Doveside, no cropmark evidence was noted and no heritage assets have been recorded. The site was agricultural fields until the 20th century, when it was used as allotments and subsequently saw the construction of a lake, following residential development of the land immediately to the north.

A programme of geophysical survey has been recommended, to inform a further scheme of archaeological evaluation and mitigation, to be designed following liaison with South Yorkshire Archaeology Service.

The proposed works would not harm the setting of any designated heritage assets.

Acknowledgements

FAS Heritage would like to thank Steve Maslen and Nick Allin (JBA Consulting) and Andrew Lines and Zac Nellist, South Yorkshire Archaeology Service for assistance during the preparation of this report.

1.0 INTRODUCTION

This document presents the results of a Heritage Assessment (HA) for an area of proposed wetland creation at Wombwell, South Yorkshire. The HA has been prepared by FAS Heritage on behalf of JBA Consulting for the Garganey Trust, following liaison with Andy Lines, South Yorkshire Archaeology Services (SYAS). Research and report writing were undertaken in August to October 2017.



Plate 1 Aerial view of the site © 2017 Google Earth

1.1 LOCATION AND LAND USE

The proposed sites lie to the southeast of Wombwell. The larger, southern site occupies a large arable field bounded by Bulling Dike to the north. Land rises to the south, and a sewage works occupies land to the northwest (NGR: SE 414 033)(Plate 1 and Plate 2; Figure 1). The smaller, northern side, referred to as 'Doveside' lies to the immediate south of a modern residential development and is occupied by a central lake, surrounded by open grass with some wooded areas and hedgerows.

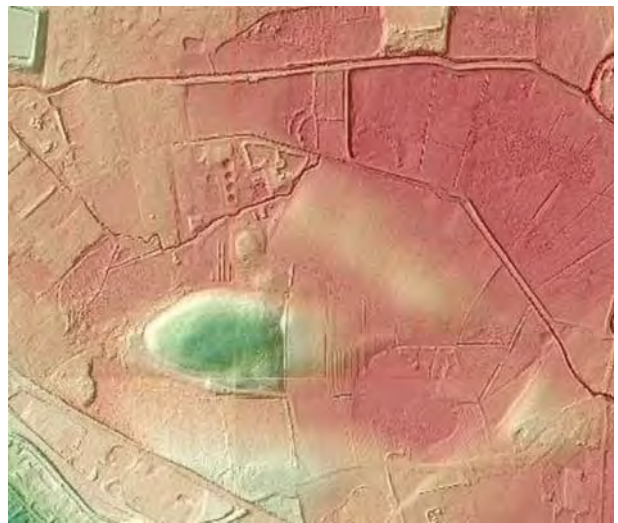


Plate 2 LiDAR and hillshade data showing the topography of the area

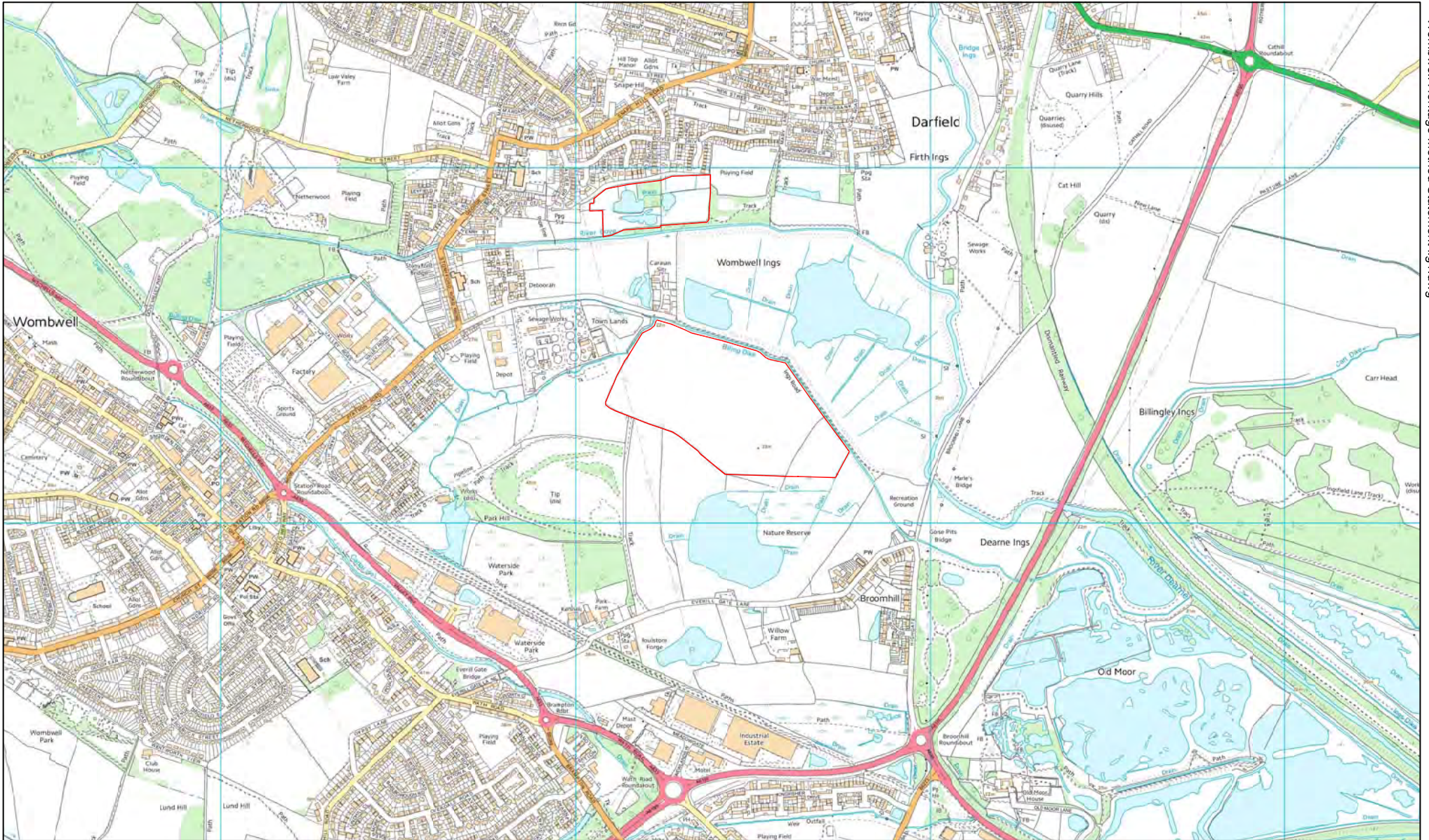
1.2 AIMS AND OBJECTIVES

The proposed wetland creation would see a large amorphous cut excavated in the northern part of the site to form a large body of water. The aim of this HA is set out the significance the proposed site, in terms of its heritage significance and archaeological potential. This is in line with Paragraph 128 of the National Planning Policy Framework which states:

'In determining applications, local planning authorities should require an applicant to describe the significance of any heritage assets affected, including any contribution made by their setting. The level of detail should be proportionate to the assets' importance and no more than is sufficient to understand the potential impact of the proposal on their significance.'

The significance of a heritage asset is defined as:

'The value of a heritage asset to this and future generations because of its heritage interest. That interest may be archaeological, architectural, artistic or historic. Significance derives not only from a heritage asset's physical presence, but also from its setting.' (NPPF Glossary)



Reproduced from Ordnance Survey with the permission of The Controller of Her Majesty's Stationery Office. © Crown copyright.

FMH Archaeology Specialists Ltd Unit 8 Fulford Business Centre 35 Hospital Fields Road York YO10 4DZ (Licence No AL10006790)

Location map

Scale 1:15000



Figure 1