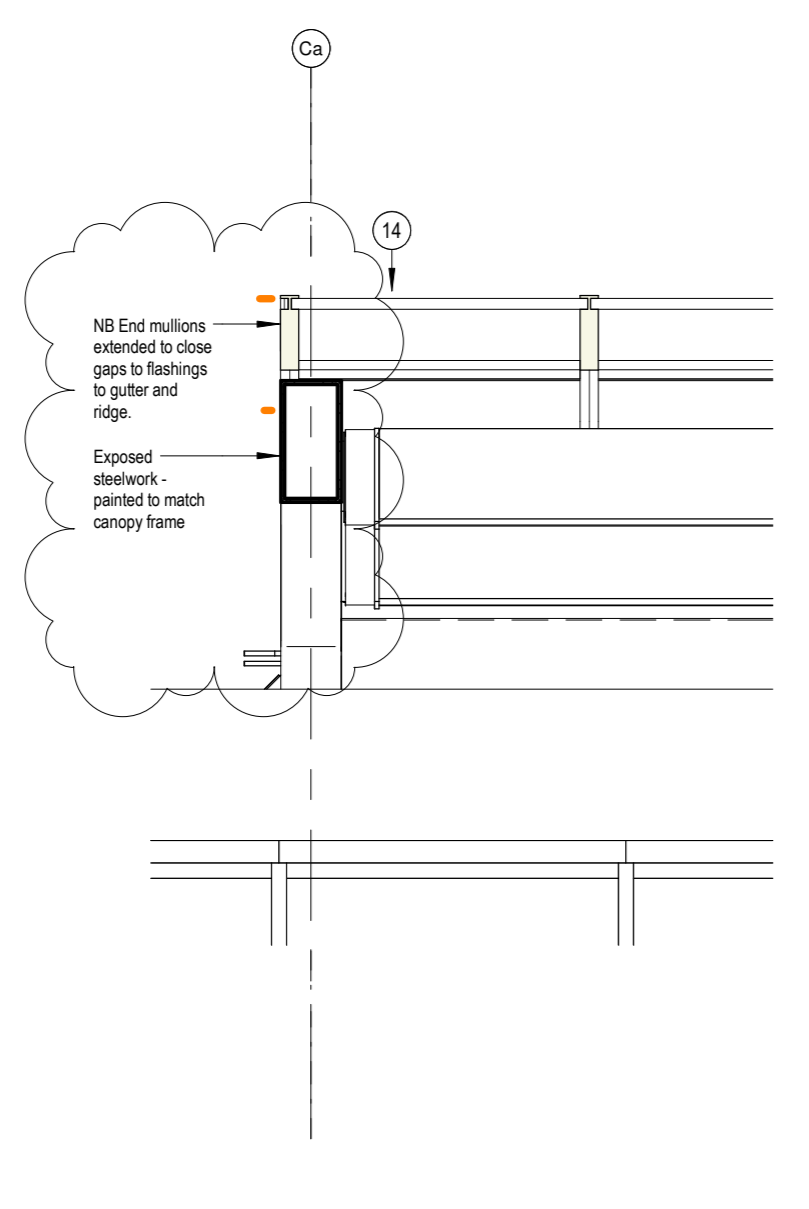
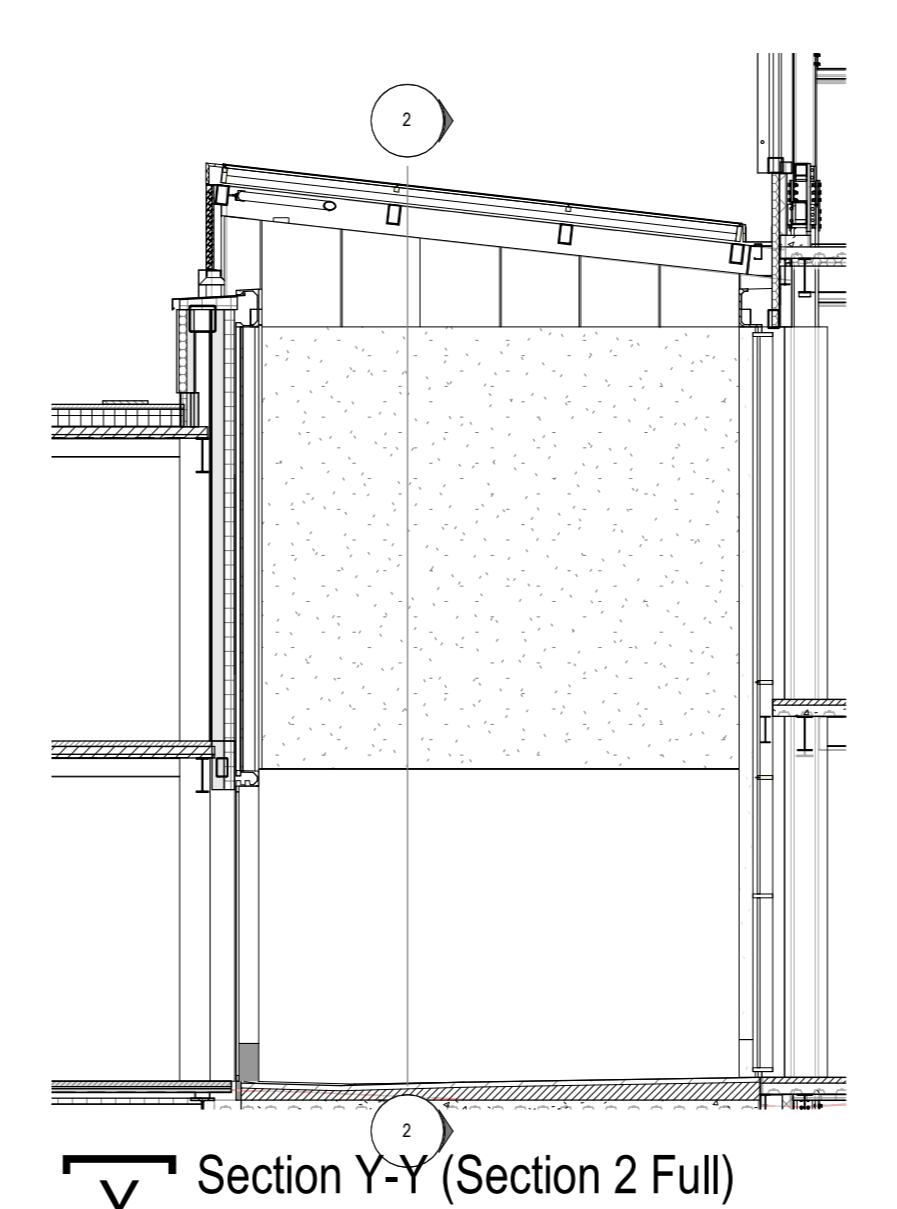


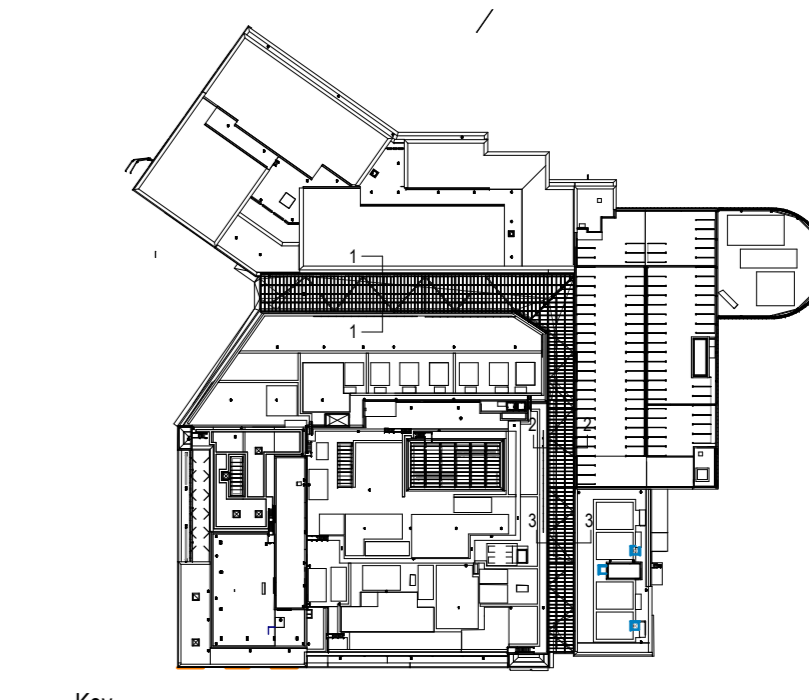
X Section X-X (Section 1 Full)
1:100



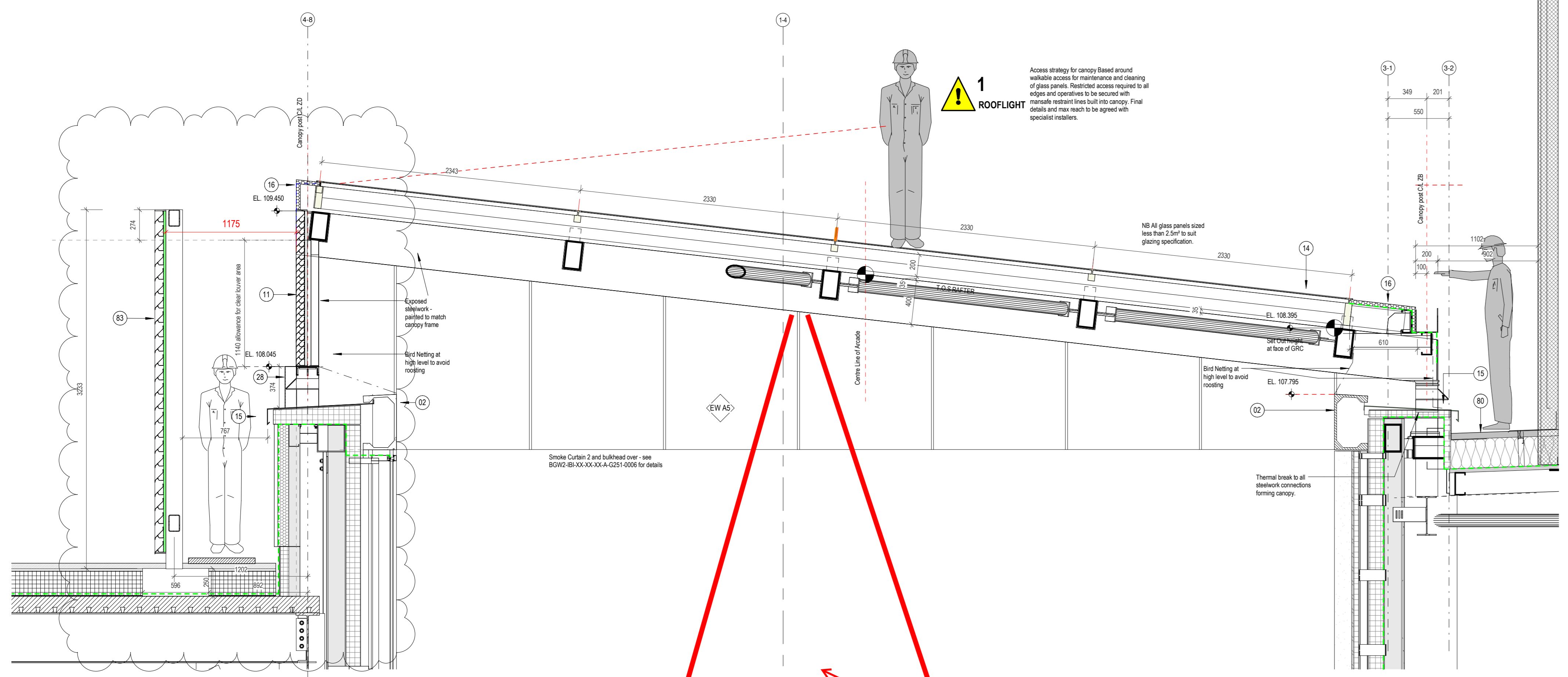
S4 MDG - GL Ca Canopy End
1:25



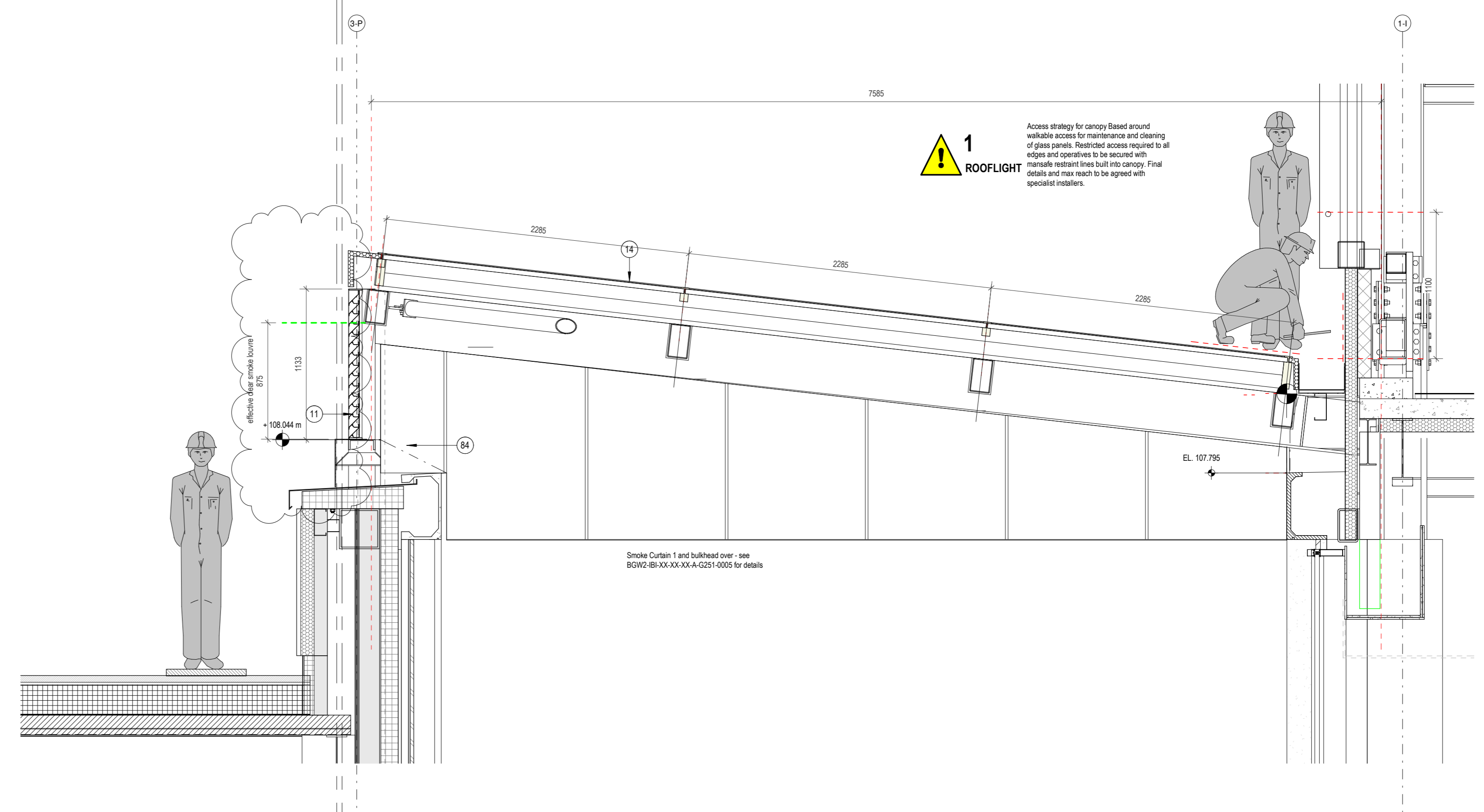
Y Section Y-Y (Section 2 Full)
1:100



Key



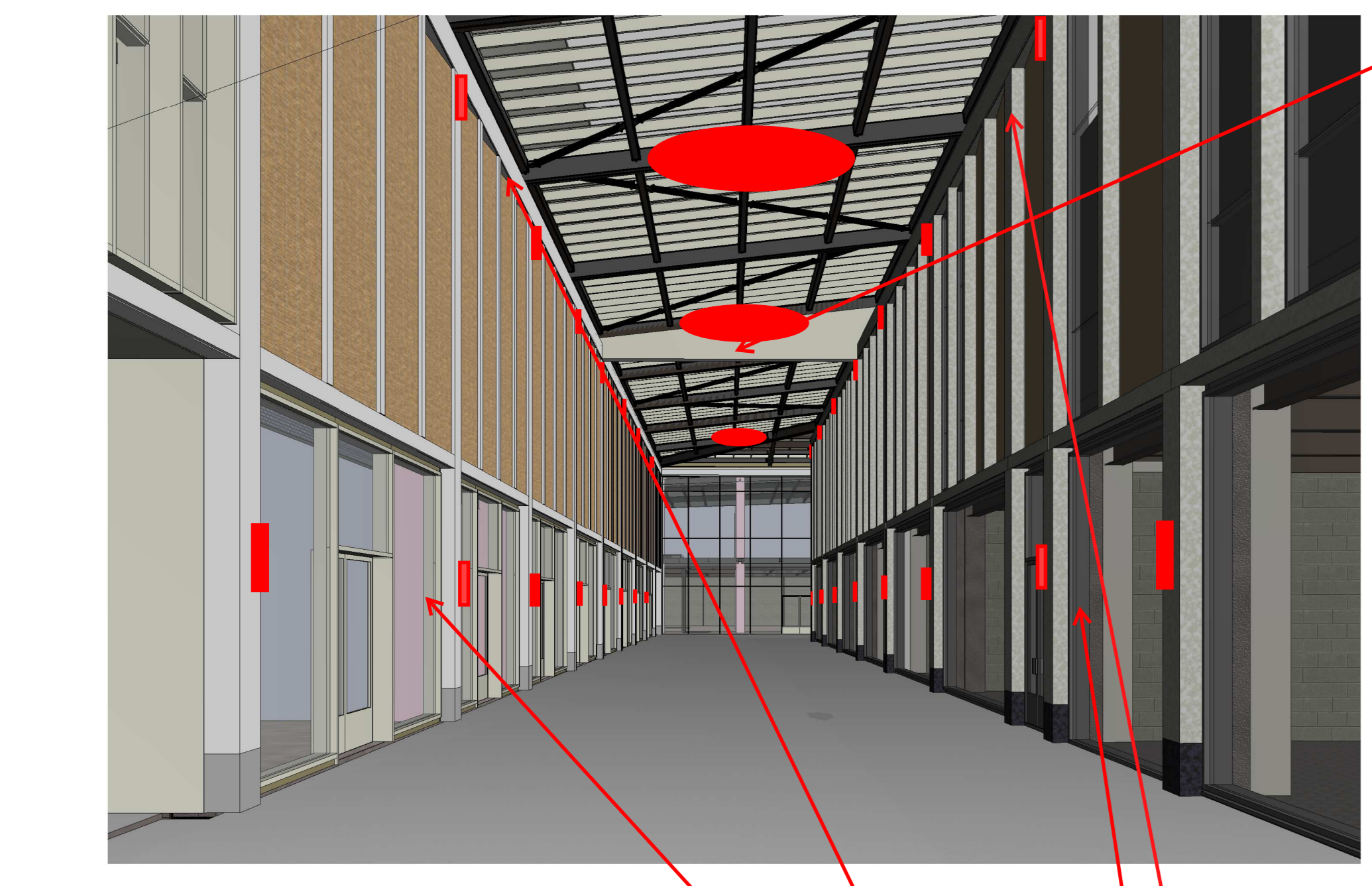
S-1 Section 1
1:25



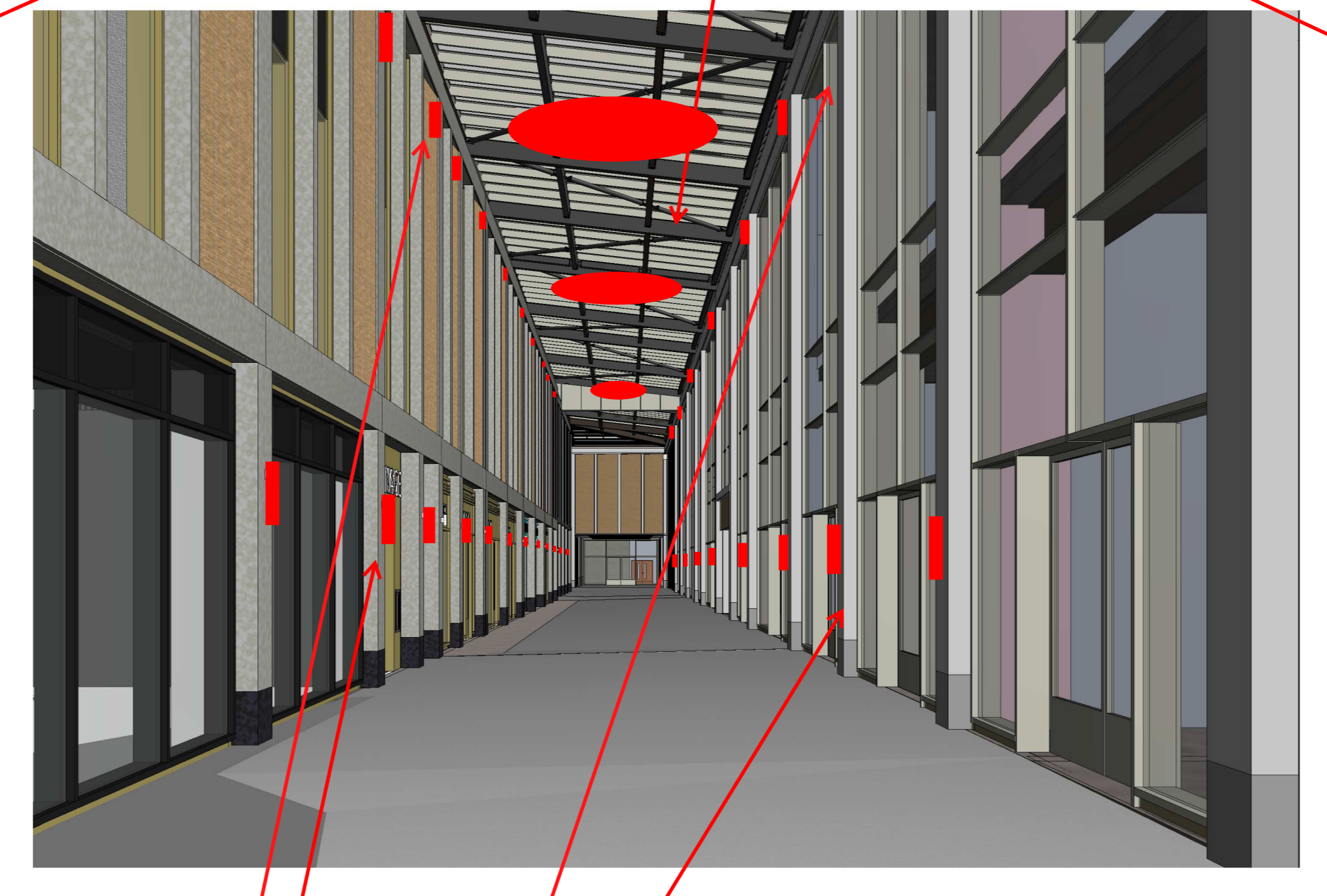
S-2 Section 2
1:25



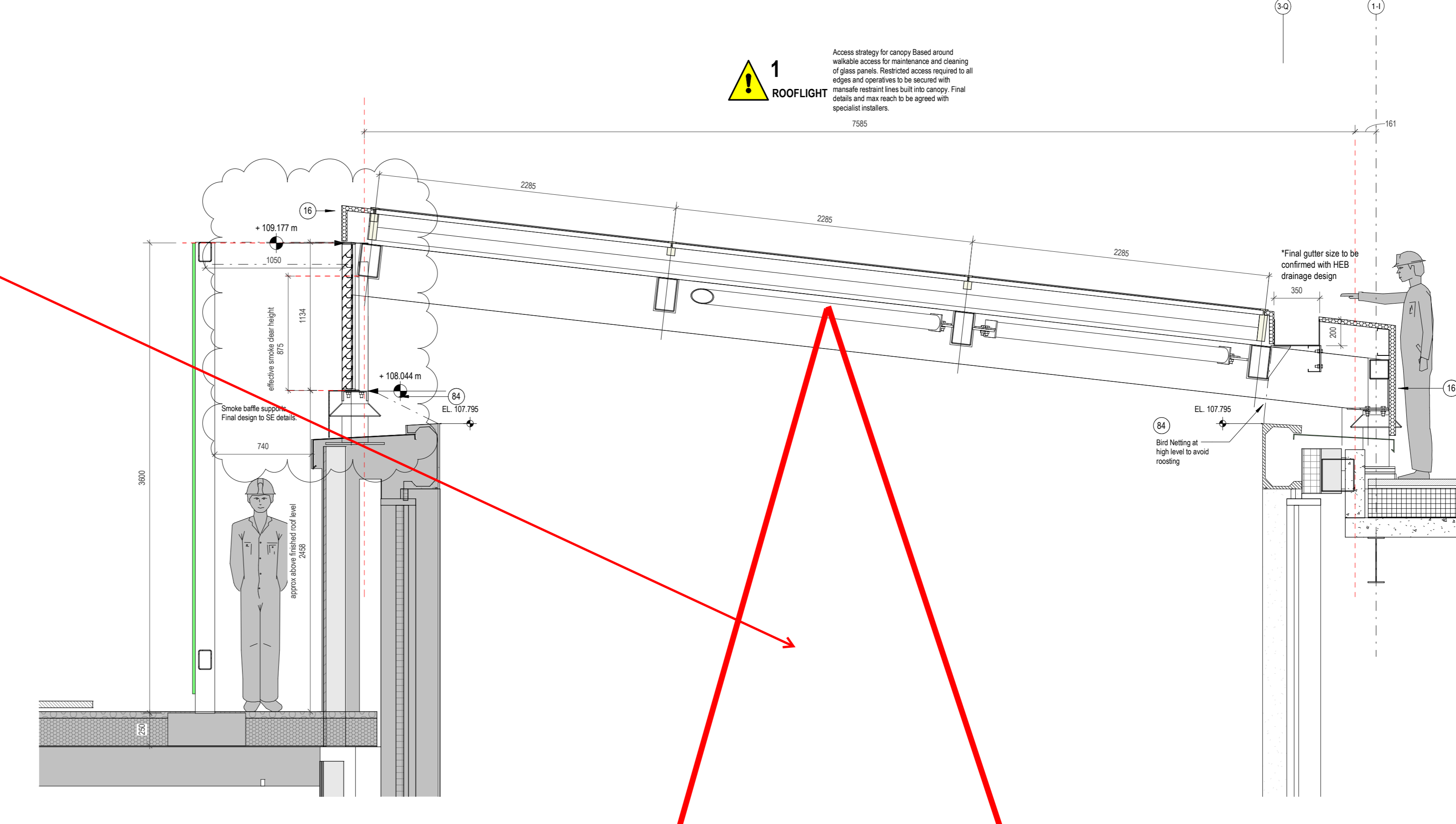
Circular Halo Luminaires



1 Arcade View - MDG Entrance to A1 (ZB-ZD)



2 Arcade View - New St Entrance to MSCP



S-3 Section 3
1:25

Downlight luminaires to top and middle of GRC

This drawing is copyright:
 • Do not scale dimensions from this drawing.
 • This drawing is to be used in conjunction with all other relevant drawings.
 • All discrepancies on this drawing are to be reported to the architect.
 • Do not modify any element of this drawing.
 • Use drawings only for purposes stated.
 • North Sign: Key Plan.

The following external model files are included within this drawing:

KEY ELEMENTS		
Ref	Description	NBS Ref
11	PPC aluminium louvre screen to plant areas	NBS L10.650B
14	Glazed canopy on feature steel sections	NBS L10.460A
15	PPC aluminium coping system	NBS H72.400
16	Profiled metal decking with in situ concrete polymer modified polyester reinforced bitumen roofing membranes, rounded profiled paving slabs	NBS J31.130A
72	Insulated upstand board to wetted roof	NBS J31.341
73	PIR board insulation parapet capping	
80	Metal Profile Roofing	NBS H31.125A
81	Insulated trapezoidal wall panel	NBS H43.121A
82	Metal composite roof panel	NBS H43.124A
83	Smoke screen louvre baffles on steel frame	NBS L10.610C
84	Bird & vermin control netting	NBS N16.330
Party Wall		
57	Facing brickwork	NBS F10.115A
68	Full fill cavity insulation	NBS F30.150A
69	Sacrificial full blown insulation to ensure full fill to void between buildings. Make good to all holes in existing wall prior to commencement.	NBS F11.220
70	Wall ties to S.E. specification	
74	Cavity tray	NBS F30.370
75	Code 5 lead flashing installed in accordance with L.S.A. manual	NBS H71.420
76	SFS to specialist design, external calcium silico-aluminate bonded particle sheathing board, breather membrane forming primary air seal line	
77	Weep hole	NBS F30.132
Main Elements		
01	Built brick slips on metal carrier system	NBS H02.110A
02	GRC column and beam joinery	NBS H40.130A
03	GRC column base	NBS H40.130A
04	Profiled Aluminium Cladding	NBS H31.120A
05	PPC curtain walling screens by Tenants	NBS H11.110A
06	PPC insulated spandrel panels	
07	Powder coated aluminium solid/perforated alternate cladding panels to box section carrier rails	NBS H02.140
08	Metal microspan panels	NBS H02.120A
10	PPC aluminium external doors/roller shutters	NBS L20.610A
16	PPC aluminium insulated flashing	
17	Suspended internal signage	
18	Flat soffit metal panel system	NBS H02.120A
19	LED strip lighting integrated into cladding system	NBS H02.120A
22	Concrete (Cast in situ)	NBS E05
24	Glazed brick slips	NBS H02.111A
25	Soffit insulation board	NBS P10.165A
26	Screed (by landscape)	NBS M10.115
27	PPC louvres	NBS L10.650A
28	PPC aluminium flashing	NBS H02.120A
30	GRC Panels to achieve high quality 'Portland Stone' effect	NBS H40.126A
32	Underlab insulation	NBS E20.200
35	PPC curtain walling system with integrated feature fins	NBS H11.110C
Detail Components		
31	DPM	NBS J40
50	SFS to specialist design with internal plasterboard lining, sheathing board, breather membrane forming primary air seal line and PIR rigid insulation board.	NBS K10
51	Internal Partition	NBS K10
54	Unit suspended ceiling by Tenants	NBS K10.255
55	Independent plasterboard lining to steelwork	NBS P10.432A
56	Fire rated cavity barriers required at compartment floors as required by Fire Engineering Report	NBS F10.265A
57	Concrete blockwork	NBS P10.265A
58	Floating floor to suit Acoustician's design	NBS P10.185A
60	Insulated building board to soffit	NBS P10.185A
62	Cold liquid applied waterproofing system to car park levels	NBS Q11.111
63	Combined vehicle restraint and pedestrian barrier to MSCP by specialist	NBS Q41.140A
66	Screed (by Tenants)	

P01 (20/10/19) Smoke baffle lengths updated to reflect steelwork and canopy sections updated. AG EA
 P02 (05/04/19) D4 - Issued for Contract. AG EA
 P03 (20/02/19) S3 - Suitable for Review and Comment. AG EA
 Rev Date Reason Notes Drawn
 Bamsley Metropolitan Borough Council
IBI Intelligence Buildings Infrastructure www.ibigroup.com
 Project The Glass Works, Bamsley Development Sites ZB & ZC
 Drawing Title ZB/C/D - Glazed Canopy Sections
 Job Number 50727 Date Created 20/02/2019 Page 11/22 Status Code S3
 Scale/AD As indicated Purpose Review and Comment
 Drawing Number BGW2-IBI-XX-XX-XX-A-G251-0002 Revision P03